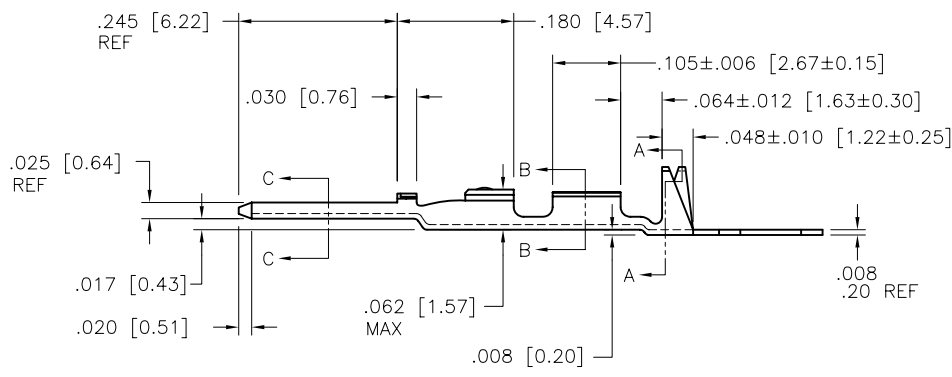
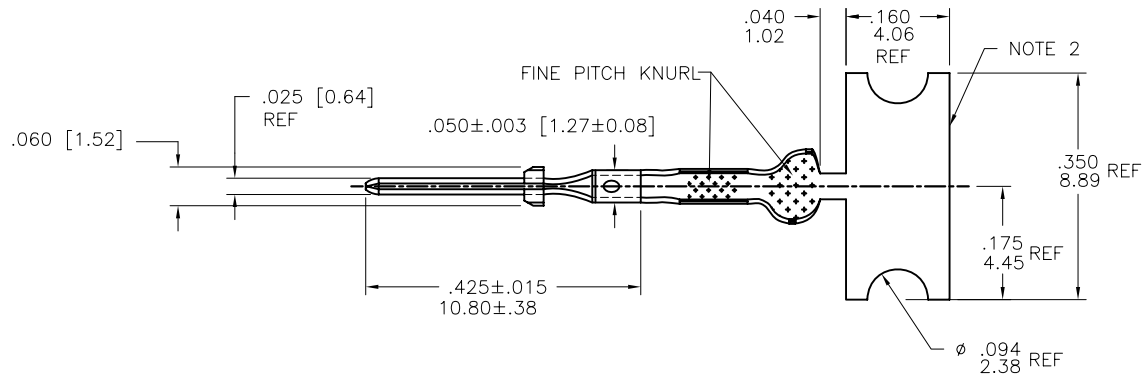
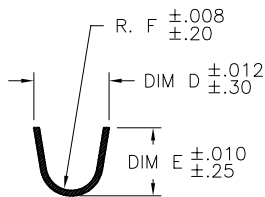


PRODUCT NUMBER  
SEE SHEET 2

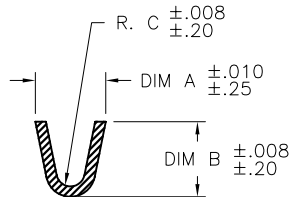


mat'l. code 3/4 HD BRASS CDA NO. 260				surface <input checked="" type="checkbox"/> tolerance		projection	product family PV TERMINAL	
ltr	ecn no	dr	date	tolerances unless otherwise specified			title	
D	V41703	SAR	1994-11-30	angles	$\frac{XX}{100} \pm 0.01 / X \pm 3$	INCH/MM	CTW MALE PIN	
E	V80946	LSS	1998-06-03	$\frac{XXX}{1000} \pm 0.005 / XXX \pm 13$				
F	V04-0056	VS	2004-02-17	$0' \pm 2'$	$\frac{XXXX}{10000} \pm 0.0020 / XXX \pm 0.051$	scale 4/1		
G	V05-0467	HTB	2005-05-23	dr	S ROYER	1994-11-30	dwg no sheet 1 of 3 size	
H	V06-0623	HTB	2006-06-28	ENGR	T.HANNA	1994-11-30	75653 A4	
J	V07-0218	HTB	2007-03-16	chr	T.HANNA	1994-11-30	type CUSTOMER Drawing	
K	V08-0440	HTB	2008-10-09	appd	T.HANNA	1994-11-30		
sheet index	revision	K	K	K				
	sheet	1	2	3				

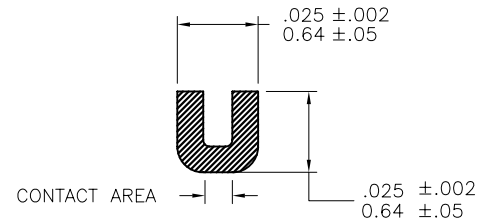
PRODUCT NO. AS REELED FOR APPLICATION MACHINES NOTE 5		WIRE AWG	WIRE BARREL			INSULATION BARREL			
RIGHT TO LEFT FEED	LEFT TO RIGHT FEED		A	B	C	D	E	F	
75653-001	75653-004	28-32	.054/1.37	.058/1.47	.011/0.28	.115/2.92	.105/2.67	.040/1.02	OBSOLETE
75653-001LF	75653-004LF	28-32	.054/1.37	.058/1.47	.011/0.28	.115/2.92	.105/2.67	.040/1.02	NOTE 7
75653-002	75653-005	22-26	.070/1.78	.065/1.65	.017/0.43	.139/3.53	.120/3.05	.050/1.27	OBSOLETE
75653-002LF	75653-005LF	22-26	.070/1.78	.065/1.65	.017/0.43	.139/3.53	.120/3.05	.050/1.27	NOTE 7
75653-003	75653-006	18-20	.104/2.64	.104/2.64	.021/0.53	.139/3.53	.120/3.05	.050/1.27	OBSOLETE
75653-003LF	75653-006LF	18-20	.104/2.64	.104/2.64	.021/0.53	.139/3.53	.120/3.05	.050/1.27	NOTE 7



SECTION A-A  
SCALE 2:1



SECTION B-B  
SCALE 2:1



SECTION C-C  
SCALE 5:1

NOTES:

- PLATING: 100μ"/2.54μ SnPb MINIMUM PRE-PLATED (OBSOLETE)  
P/N WITH LF SUFFIX: 100μ"/2.54μ Sn MINIMUM PRE-PLATED
- FOR MANUFACTURING PURPOSES ONLY.
- PART MAY BE USED WITH MINI-LATCH HSG.
- APPLICABLE SPECIFICATIONS:  
A. BUS-12-098: PRODUCT SPECIFICATION  
B. TA-211: CRIMP SPECIFICATION
- PART NUMBERS WITH AN LF SUFFIX MEET EUROPEAN UNION DIRECTIVES AND OTHER COUNTRY REGULATIONS AS DESCRIBED IN GS-22-008.
- THIS PRODUCT IS NOT INTENDED TO BE EXPOSED TO MANUFACTURING SOLDER PROCESSES.
- THIS PRODUCT HAS 100% TIN PLATING IN THE INTERFACE AND HAS NOT BEEN TESTED FOR WHISKER GROWTH IN ALL INTERCONNECT ENVIRONMENTS.
- PACKAGE QUANTITY: 8000 PER REEL

mat'l. code 3/4 HD BRASS CDA NO. 260		surface ✓		tolerance		projection INCH/MM		product family PV TERMINAL	
ltr		ecn no		dr		date		title CTW MALE PIN	
k		angles		inches		scale 4/1		dwg no 75653	
		0° ±2'		.XXX ±.0020/.XXX±.051		sheet 2 of 3		size A4	
		dr		S ROYER		1994-11-30		type CUSTOMER Drawing	
		enr		T.HANNA		1994-11-30		FCI	
		chr		T.HANNA		1994-11-30			
		appd		T.HANNA		1994-11-30			
sheet index		revision sheet							

