

# BAS2 | Bipod supports

Technopolymer



- 1
- 2
- 3
- 4
- 5
- 6
- 7
- 8
- 9
- 10
- 11
- 12
- 13
- 14
- 15
- 16
- 17
- 18

## MATERIAL

Glass-fibre reinforced polyamide based (PA) technopolymer, black colour, matte finish.

## STANDARD EXECUTIONS

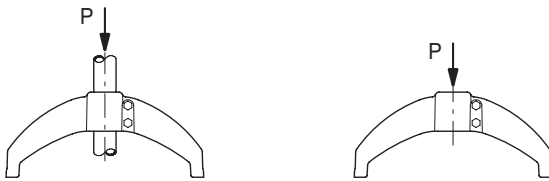
- **BAS2-A**: zinc-plated steel M10 screws, nuts and washers.
- **BAS2-SST**: AISI 304 stainless steel M10 screws, nuts and washers.

## ASSEMBLY ON LEVELLING ELEMENTS

The bipod support bases are supplied with brass bosses, threaded pass-through hole for the assembly of the levelling element series LS.A (see page 1224), LV.A (see page 1238), LV.F (see page 1258).

## FEATURES

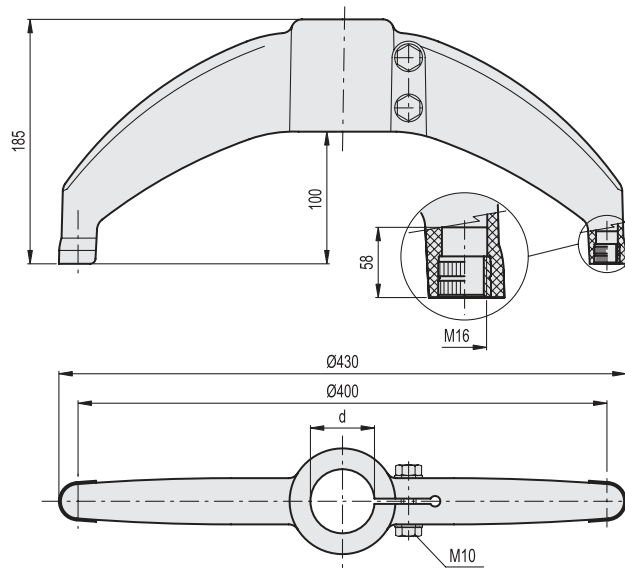
The absence of cavities and the slightly round shapes offer modern and elegant aesthetics and guarantee the easy cleaning. Maximum tightening torque for screw assembly 35 Nm.



Retention force  
P = 2000 N

Max. static load  
P = 9800 N

Values obtained with tightening torque 35 Nm



| Conversion Table  |      |
|-------------------|------|
| 1 mm = 0,039 inch |      |
| d                 |      |
| mm                | inch |
| 42.4              | 1.67 |
| 48.3              | 1.90 |
| 60.3              | 2.37 |

## BAS2-A

| Code   | Description | d Tube (mm) | d Tube (GAS) | Δ   |
|--------|-------------|-------------|--------------|-----|
| 419636 | BAS2-42-A   | 42.4        | 1"1/4        | 680 |
| 419634 | BAS2-48-A   | 48.3        | 1"1/2        | 670 |
| 419632 | BAS2-60-A   | 60.3        | 2"           | 650 |

## METRIC

## BAS2-SST

| Code   | Description |
|--------|-------------|
| 419637 | BAS2-42-SST |
| 419635 | BAS2-48-SST |
| 419633 | BAS2-60-SST |

METRIC

INOX STAINLESS STEEL

Levelling elements and supports