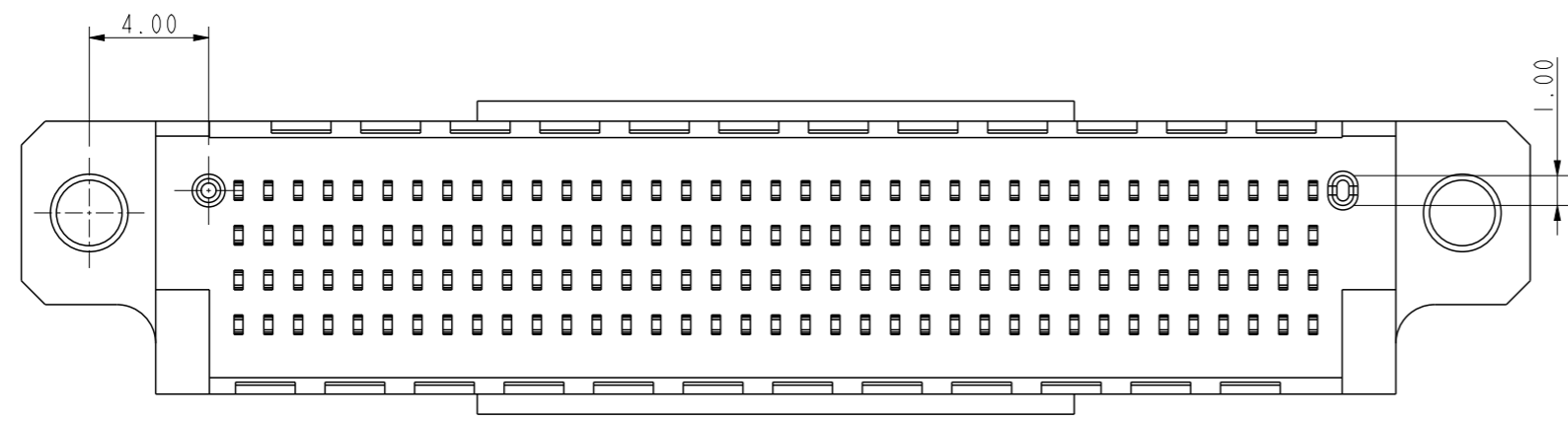
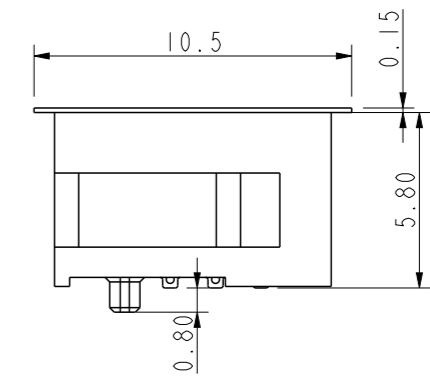
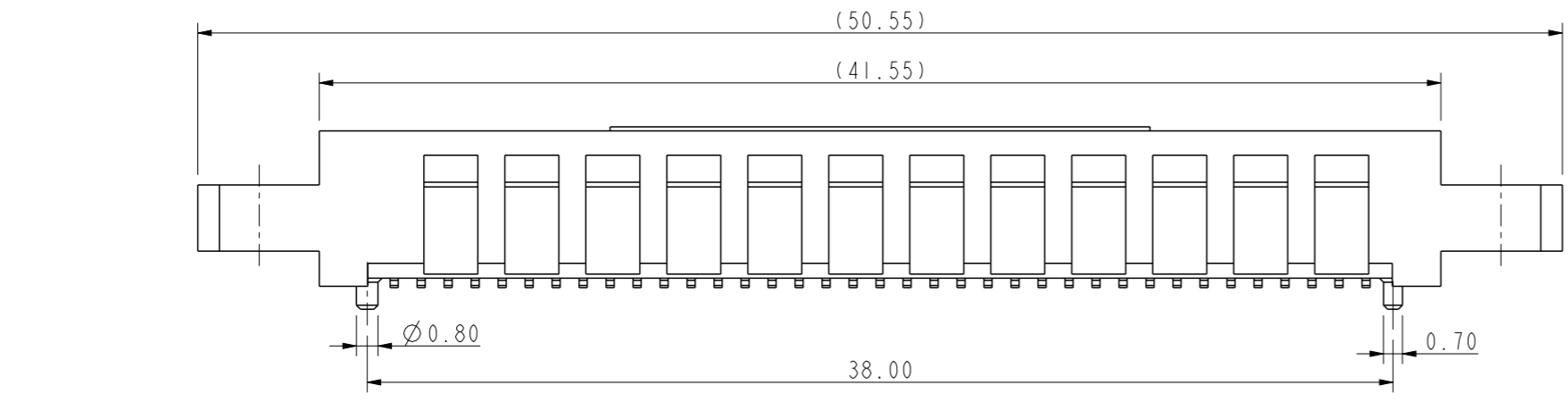
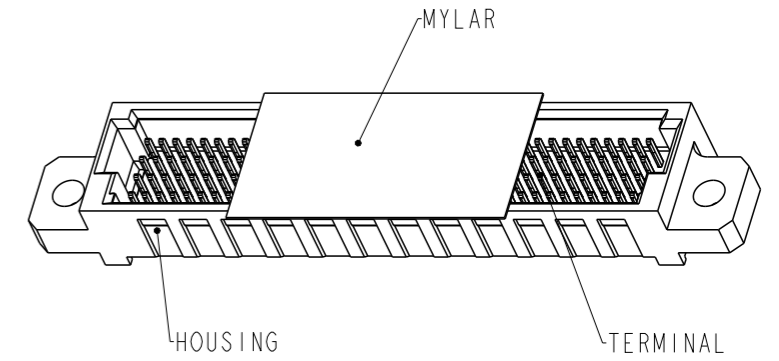
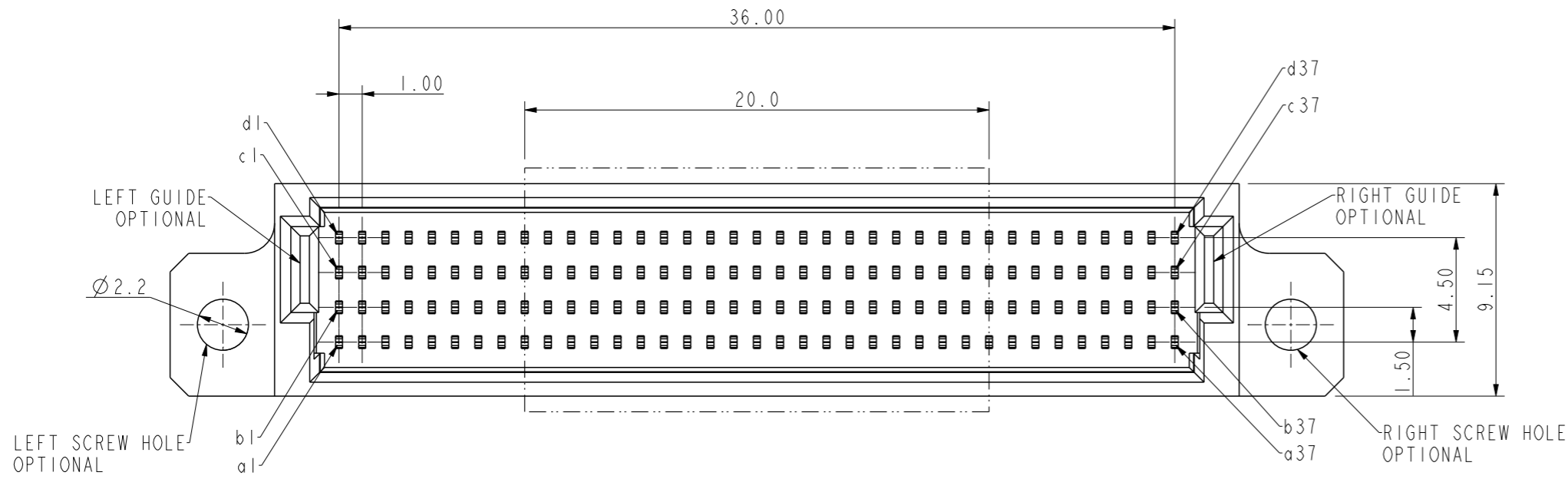


PRODUCT NO.  
10164939-148XXXXMF



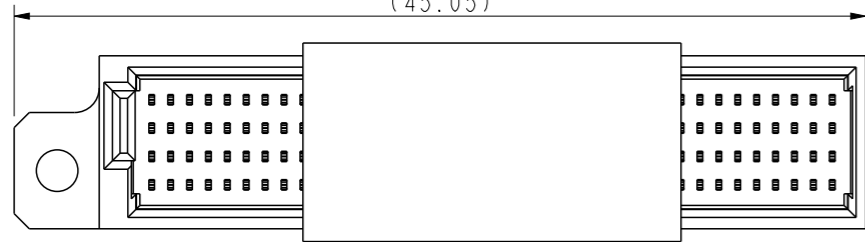
- NOTES:
- MATERIAL:
    - HOUSING: THERMOPLASTIC
    - TERMINAL: COPPER ALLOY
  - PLATING: 1-3 $\mu$ m NI UNDER PLATING;
    - CONTACT AREA: ACCORDING TO PART NUMBER;
    - SOLDER TAIL: ACCORDING TO PART NUMBER.
  - COPLANARITY AREA OF TERMINATION 0.10MM MAX
  - THIS HOUSING WILL WITHSTAND EXPOSURE TO 260°C PEAK TEMPERATURE FOR 20 SECONDS IN A IR REFLOW SOLDERING APPLICATION

© 2020 Amphenol Corporation

spec ref	dr Li-Qing Lei 2022/03/08			projection	mm	size A3	scale 4:1
tolerance std	eng Tian-Yu Tang 2022/04/19					ecn no -	rel level Released
TOLERANCES UNLESS OTHERWISE SPECIFIED							
surface	linear	0.X	±0.25	<b>Amphenol FCI</b>	title Header 4Rows, VT 2H BTB Secure Connector	dwg no 10164939	rev A
		0.XX	±0.15				
		0.XXX	±0.10				
	angular	0°	±°	cat. no.	Product - Customer Drw	sheet 1 of 2	

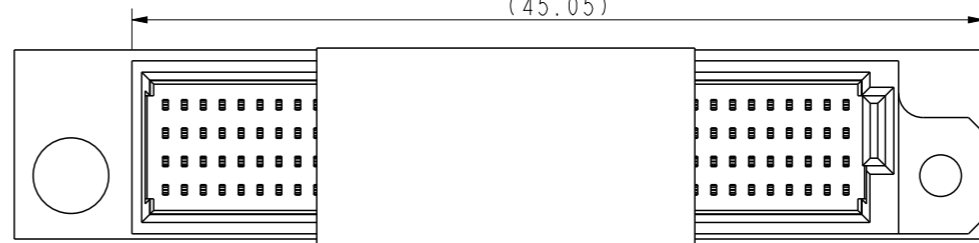
10164939-148XX11MF  
WITH LEFT GUIDE AND LEFT SCREW HOLE

(45.05)



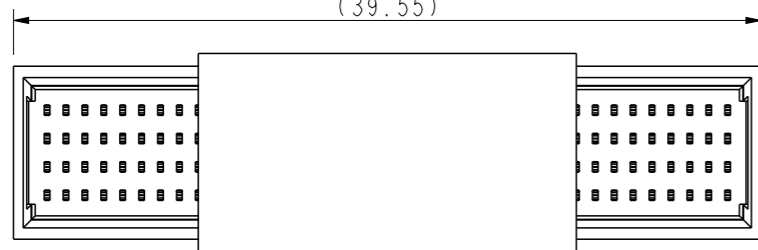
10164939-148XX22MF  
WITH RIGHT GUIDE AND RIGHT SCREW HOLE

(45.05)



10164939-148XX00MF  
WITHOUT GUIDE AND SCREW

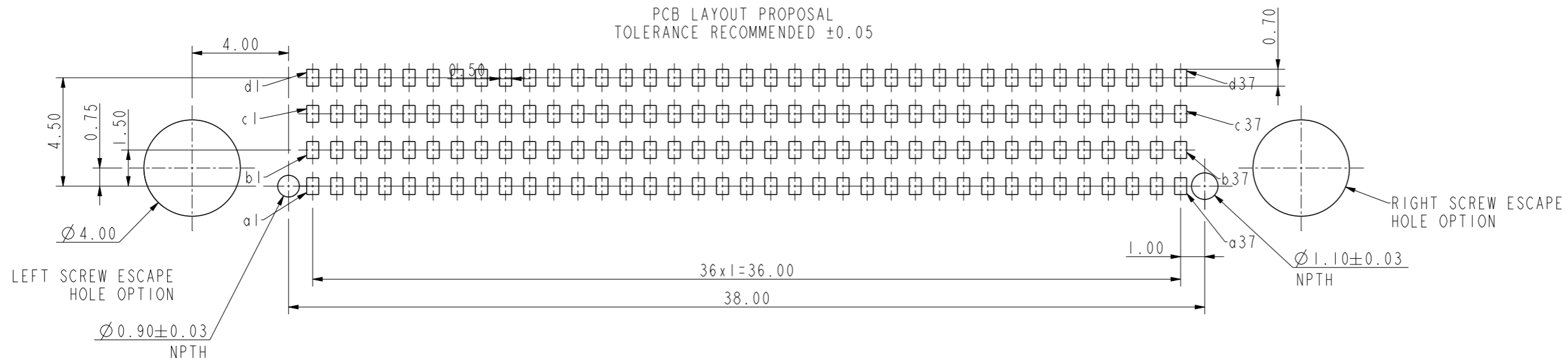
(39.55)



PART NUMBER DESCRIPTION

- 10164939-148XXXXXF
- PIN NUMBER
  - LEAD FREE
  - PICK UP FEATURE  
L: WITHOUT MYLAR  
M: WITH MYLAR
  - GUIDE OPTION  
0: WITHOUT GUIDE;  
1: WITH LEFT GUIDE;  
2: WITH RIGHT GUIDE;  
3: WITH BOTH GUIDES.
  - SCREW HOLE OPTION  
0: WITHOUT SCREW HOLE;  
1: WITH LEFT SCREW HOLE;  
2: WITH RIGHT SCREW HOLE;  
3: WITH BOTH SCREW HOLES.
  - PLATING OPTION:  
CONTACT AREA;  
1. 8u" GXT OR GOLD ON CONTACT AREA;  
80-160u" TIN OR GOLD FLASH ON SOLDER TAIL;
  - FUNCTION OPTION  
0. NOT ONE TIME;  
1. ONLY ONE TIME.

PCB LAYOUT PROPOSAL  
TOLERANCE RECOMMENDED ±0.05



LEFT SCREW ESCAPE HOLE & RIGHT SCREW ESCAPE HOLE IS OPTIONAL BY CUSTOMER

spec ref	dr	Li-Qing Lei	2022/03/08	projection	mm	size	A3	scale	4:1
tolerance std	eng	Tian-Yu Tang	2022/04/19			ecn no	-	rel level	Released
TOLERANCES UNLESS OTHERWISE SPECIFIED									
surface	linear	0.X	±0.25		Header 4Rows, VT 2H BTB Secure Connector	dwg no	10164939	rev	A
		0.XX	±0.15						
		0.XXX	±0.10						
	angular	0°	±°	cat. no.	Product - Customer Drw	sheet 2 of 2			