

## POT 2 Click

PID: MIKROE-3325

Weight: 24 g

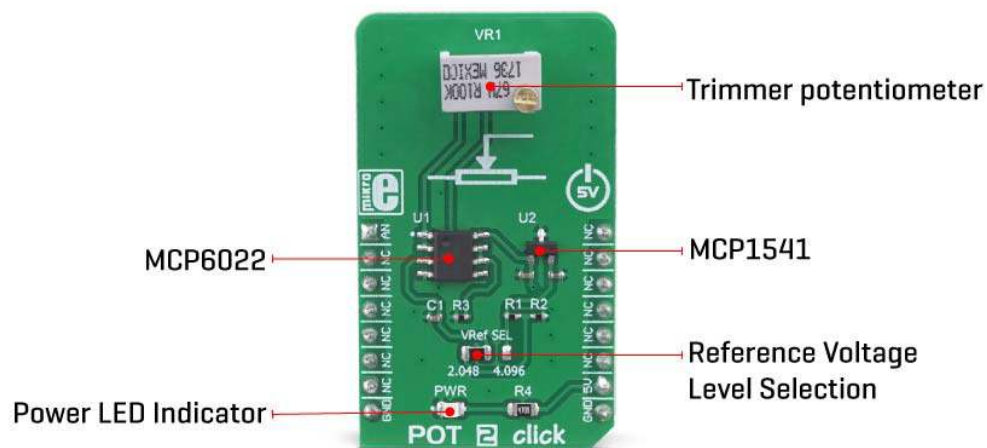
**POT 2 click** is a Click board™ with the accurate selectable reference voltage output. By utilizing a multi-turn precision potentiometer, this Click board™ can provide very accurate voltage output on the AN pin of the mikroBUS™. POT 2 click is also equipped with the SMD jumper, which allows the maximum reference voltage to be selected between two typically used values: 2.048V or 4.096V. Using a rail-to-rail buffering operational amplifier which provides constant input and output impedance, this Click board™ is an ideal solution when accurately controlled voltage reference is required.

POT 2 click is supported by a mikroSDK compliant library, which includes functions that simplify software development. This Click board™ comes as a fully tested product, ready to be used on a system equipped with the mikroBUS™ socket.

Having the ability to adjust the voltage on the AN pin very accurately, this Click board™ can be used for development of applications that require voltage reference other than what is commonly available as an output from a dedicated IC. This includes HMI applications where the potentiometer can be used to provide fine control the movement of a step motor, or intensity of a LED segment, backlight amount of a TFT screen, and similar applications that require fine control of the voltage reference.

## How does it work?

This Click board™ uses a very simple design: the **MCP1541**, a precision voltage reference IC from **Microchip** is used to provide the voltage of 4.096V. is fed to an input of an operational amplifier, that acts as the buffer, with the unity gain. The output of the first buffer is fed to one end of a high-precision trimmer-potentiometer. The second end of the potentiometer is grounded, while the middle tap of the potentiometer is used as the input to a second buffer. The output of the second buffer is routed to the AN pin of the mikroBUS™, allowing the host microcontroller (MCU) to use the output voltage for any purpose.



The design uses the **MCP6022**, a dual, rail-to-rail operational amplifier from Microchip. This operational amplifier is a perfect choice for this design, as it allows rail-to-rail operation, uses a single power supply of 5V, and has a stable unity gain. Without the buffers, the variable impedance would affect the reference voltage. The reference voltage IC can provide less than 10 mA, with the significant voltage drop for output currents exceeding 2 mA.

Therefore, the MCP6022 used as a dual buffer ensures good stability of the circuit.

The potentiometer itself is a multi-turn type of potentiometer which provides high accuracy. It is equipped with a screw, which can be rotated 20 times between the end positions. This allows the resistance to be precisely selected. The fact that the screw fits tightly into the casing of the potentiometer, ensures that no resistance variations are possible, unlike the conventional knob or slider potentiometers.

POT 2 click is equipped with the SMD jumper, which is used to select the voltage reference for the potentiometer. There are two options available: 2.048V and 4.096V. These values are the most commonly used voltage references for different kinds of A/D converters. Most MCUs which use 3.3V for the power supply, do not have the option to use 4.096V (full voltage output of the MCP1541 IC), so an option to select 2.048V by dividing the output voltage of the MCP1541 IC, is very useful in that case. The voltage reference can be selected by moving the SMD jumper labeled as VRef SEL to the desired position (2.048V or 4.096V).


## Specifications

Type	Measurements
Applications	It can be used for development of different types of HMI applications where the potentiometer can be used to provide fine control the movement or to change the intensity of a LED segment in fine steps, backlight amount of a TFT screen, etc.
On-board modules	MCP1541, a precision voltage reference IC; MCP6022, a dual, rail-to-rail operational amplifier, both from Microchip
Key Features	High precision, 20 turns trimmer potentiometer, buffered reference voltage output, selectable maximum value for the adjustable voltage reference

Interface	Analog
Input Voltage	5V
Click board size	M (42.9 x 25.4 mm)

## Pinout diagram

This table shows how the pinout on **POT 2 Click** corresponds to the pinout on the mikroBUS™ socket (the latter shown in the two middle columns).

Notes	Pin					Pin	Notes
Ref. Voltage OUT	AC	1	AN	PWM	16	NC	
	NC	2	RST	INT	15	NC	
	NC	3	CS	RX	14	NC	
	NC	4	SCK	TX	13	NC	
	NC	5	MISO	SCL	12	NC	
	NC	6	MOSI	SDA	11	NC	
	NC	7	3.3V	5V	10	+5V	Power Supply
Ground	GND	8	GND	GND	9	GND	Ground

# Onboard settings and indicators

---

Label	Name	Default	Description
LD1	PWR	-	Power LED indicator
JP1	VRef SEL	Left	Reference voltage level selection: left position 2.048V, right position 4.096V

## Software support

---

We provide a library for the **POT 2 Click** on our [LibStock](#) page, as well as a demo application (example), developed using MikroElektronika [compilers](#). The demo can run on all the main MikroElektronika [development boards](#).

### Library Description

The library contains the functions needed to start and read the ADC values.

Key functions:

- `void pot2_adcInit()` - ADC Init function.
- `void pot2_adcSetInputChannel()` - ADC set input channel function.
- `uint32_t pot2_adcRead()` - ADC read function.

### Examples description

The application is composed of the three sections :

- System Initialization - Initializes LOG to print data that is read from ADC.
- Application Initialization - Initialization ADC Init and sets ADC input channel.
- Application Task - (code snippet) - Reads data from ADC and logs data to USBUART every 500 ms.

```
void applicationTask()
{
    uint16_t ADC_value;
    char demoText[ 50 ];
```

```
ADC_value = pot2_adcRead();

WordToHex(ADC_value, demoText);
mikrobus_logWrite(" ADC value: 0x", _LOG_TEXT);
mikrobus_logWrite(demoText, _LOG_LINE);
Delay_ms( 500 );
}
```

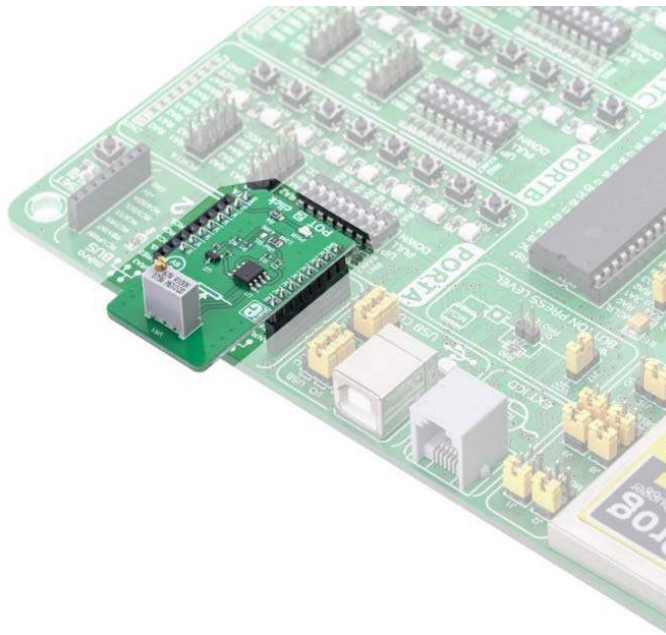
The full application code, and ready to use projects can be found on our [LibStock](#) page.

Other mikroE Libraries used in the example:

- [ADC](#)

### **Additional notes and informations**

Depending on the development board you are using, you may need [USB UART click](#), [USB UART 2 click](#) or [RS232 click](#) to connect to your PC, for development systems with no UART to USB interface available on the board. The terminal available in all MikroElektronika [compilers](#), or any other terminal application of your choice, can be used to read the message.



<https://www.mikroe.com/pot-2-click/2-13-19>