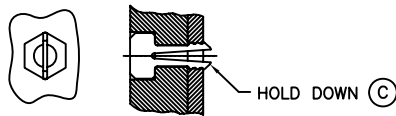


- NOTES: 1 REFER TO HEADER DRAWING 94898 AND NON-EJECT MECHANISM 92791 FOR ADDITIONAL DIMENSIONS, MATERIAL, AND PLATING INFORMATION.  
 2 REFER TO TA-946 FOR PCB LAYOUT AND PCB KEEP-OUT AREA.  
 3 RECOMMENDED SCREW TORQUE: 1.0 TO 1.5 MAX in-lbs. (1.2-1.7 cm-kgs).  
 4 PCB SIDE IS AS APPEARS INSTALLED.  
 5 SOLDER TAIL KEY:  
 R/A = RIGHT ANGLE PIN-THROUGH-HOLE  
 SMT-STG = STAGGERED SURFACE MOUNT  
 SMT-IL = SURFACE MOUNT IN-LINE (SINGLE ROW)  
 6 DIM L

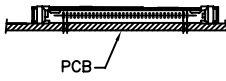
|          |         |                  |
|----------|---------|------------------|
| 4.25±0.1 | 3.5±0.1 | 5.0±0.1          |
| OTHERS   | 36,67   | 1,17,34,35,51,68 |

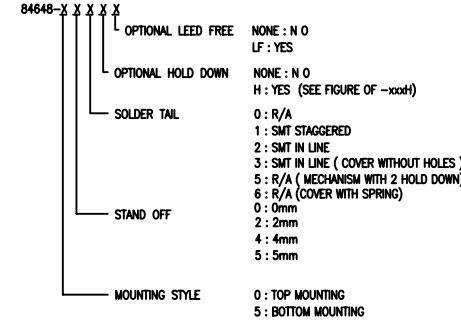
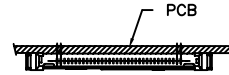
- 7 ADD "H" TO PART NUMBER FOR OPTIONAL HOLD DOWN (4 PER ASSEMBLY)



- 8 ADD "LF" TO PART NUMBER FOR LEAD-FREE TYPE.  
 9 IF LEAD FREE P/N. THE HOUSING WILL WITHSTAND EXPOSURE TO 260°C PEAK TEMPERATURE SOLDER TAIL : SMT-IL, SMT-STG CAN RESIST 40 SECONDS IN A CONVECTION, INFRA-RED OR VAPOR PHASE REFLOW OVEN. SOLDER TAIL : R/A CAN RESIST 10 SECONDS IN A WAVE SOLDER APPLICATION WITH A 1.00MM MINIMUM THICK CIRCUIT BOARD.  
 10 IF LEAD FREE P/N. THE PRODUCT MEETS EUROPEAN UNION DIRECTIVES AND OTHER COUNTRY REGULATIONS AS DISCRIBED IN GS-22-008  
 11 LEAD FREE P/N PACKAGING MEETS GS-14-920 SPECIFICATION  
 12 PRODUCT SPEC:110-263

|             |             |                  |          |                                       |           |            |  |                                       |  |
|-------------|-------------|------------------|----------|---------------------------------------|-----------|------------|--|---------------------------------------|--|
| mat'l. code |             | surface ISO 1302 |          | tolerance ISO 406 ISO 1101            |           | projection |  | product family PCMCIA                 |  |
| ltr         | ecn no      | dr               | date     | tolerances unless otherwise specified |           | MM         |  | title                                 |  |
| V           | ELX-N-17249 | HJ               | 03/20/14 | angles                                | .X±.3     | MM         |  | 68 POS. 3.3VNON-EJECT HEADER ASSEMBLY |  |
|             |             |                  |          | linear                                | .XX±.13   | scale 1:1  |  | dwg no                                |  |
|             |             |                  |          | ±2'                                   | .XXX±.051 |            |  | sheet 1 of 4 size                     |  |
|             |             |                  |          | dr                                    | R.GRAPE   | 6/22/98    |  | 84648                                 |  |
|             |             |                  |          | enrg                                  | D.BRANN   | 6/22/98    |  | A4                                    |  |
|             |             |                  |          | chr                                   | D.BRANN   | 6/22/98    |  | type CUSTOMER Drawing                 |  |
|             |             |                  |          | ppd                                   | D.BRANN   | 6/22/98    |  |                                       |  |
| sheet       | revision    | V                | V        | V                                     | V         |            |  |                                       |  |
| index       | sheet       | 1                | 2        | 3                                     | 4         |            |  |                                       |  |

| PCB SIDE ④ | SOLDER TAIL ⑤ | STANDOFF (MM) | Ⓐ EJECT HEADER | Ⓑ EJECT MECHANISM | Ⓒ NOTE ⑥ HOLD DOWN | QTY. | TO MAKE FINAL ASSY PART NUMBER | MOUNTING STYLE TO P.C.B.  |
|------------|---------------|---------------|----------------|-------------------|--------------------|------|--------------------------------|---|
| ABOVE      | R/A           | NONE          | 94898-000      | 92791-001         |                    |      | 84648-000                      |  |
| ABOVE      | R/A           | NONE          | 94898-000      | 92791-001         | 93925-001          | 4    | 84648-000H                     |   |
| ABOVE      | R/A           | 2             | 94898-040      | 92791-021         |                    |      | 84648-020                      |   |
| ABOVE      | R/A           | 2             | 94898-040      | 92791-021         | 93925-002          | 4    | 84648-020H                     |   |
| ABOVE      | R/A           | 4             | 94898-010      | 92791-041         |                    |      | 84648-040                      |   |
| ABOVE      | R/A           | 4             | 94898-010LF    | 92791-041         |                    |      | -040LF                         |   |
| ABOVE      | R/A           | 4             | 94898-010      | 92791-041         | 93925-003          | 4    | 84648-040H                     |   |
| ABOVE      | R/A           | 4             | 94898-010LF    | 92791-041         | -003               | 4    | -040HLF                        |   |
| ABOVE      | R/A           | 5             | 94898-020      | 92791-051         |                    |      | 84648-050                      |   |
| ABOVE      | R/A           | 5             | 94898-020      | 92791-051         | 93925-004          | 4    | 84648-050H                     |   |
| ABOVE      | R/A           | 5             | 94898-021MLF   | 92791-051M        | 93925-011          | 4    | 84648-050HLF                   |   |
| ABOVE      | R/A           | 5             | 94898-020      | 92791-051         | 63284-104          | 2    | 84648-055                      |   |
| ABOVE      | R/A           | 5             | 94898-021MLF   | 92791-051M        | 63284-104          | 2    | 84648-055LF                    |   |
| ABOVE      | R/A           | 5             | 94898-021MLF   | 92791-053M        | 63284-104          | 4    | 84648-056HLF                   |   |
| ABOVE      | R/A           | 5             | SEE TABLE      | SEE TABLE         | SEE TABLE          | 4    | 84648-057HLF                   |   |
| ABOVE      | R/A           | 5             | 94898-021MLF   | 92791-051M        | 63284-011          | 4    | 84648-051HLF                   |   |
| ABOVE      | SMT-IL        | NONE          | 94898-002      | 92791-001         |                    |      | 84648-002                      |   |
| ABOVE      | SMT-IL        | NONE          | 94898-002LF    | 92791-001         |                    |      | 84648-002LF                    |   |
| ABOVE      | SMT-IL        | NONE          | 94898-002LF    | 92791-001A        |                    |      | 84648-003LF                    |   |
| ABOVE      | SMT-IL        | NONE          | 94898-002LF    | 92791-001A        | 93925-001          | 4    | 84648-003HLF                   |   |
| ABOVE      | R/A           | NONE          | 94898-000LF    | 92791-001         |                    |      | 84648-000LF                    |   |
| ABOVE      | R/A           | NONE          | 94898-000LF    | 92791-001         | 93925-001          | 4    | 84648-000HLF                   |   |
| ABOVE      | R/A           | 2             | 94898-040LF    | 92791-021         |                    |      | 84648-020LF                    |   |
| ABOVE      | R/A           | 2             | 94898-040LF    | 92791-021         | 93925-002          | 4    | 84648-020HLF                   |   |
| ABOVE      | R/A           | 5             | 94898-020LF    | 92791-051         |                    |      | 84648-050LF                    |   |
| ABOVE      | SMT-IL        | NONE          | 94898-002      | 92791-001         | 93925-001          | 4    | 84648-002H                     |   |
| ABOVE      | SMT-STG       | NONE          | 94898-001      | 92791-001         |                    |      | 84648-001                      |   |
| ABOVE      | SMT-IL        | NONE          | 94898-002LF    | 92791-001         | -001               | 4    | 84648-002HLF                   |   |
| ABOVE      | SMT-STG       | NONE          | 94898-001LF    | 92791-001         |                    |      | 84648001LF                     |   |
| BELOW      | R/A           | NONE          | 94898-500      | 92791-001         |                    |      | 84648-500                      |   |
| BELOW      | R/A           | 2             | 94898-540      | 92791-021         |                    |      | 84648-520                      |   |
| BELOW      | R/A           | 4             | 94898-510      | 92791-041         |                    |      | 84648-540                      |   |
| BELOW      | R/A           | 5             | 94898-520      | 92791-051         |                    |      | 84648-550                      |   |
| BELOW      | R/A           | 5             | 94898-520      | 92791-051         | 93925-004          | 4    | 84648-550H                     |   |
| BELOW      | R/A           | NONE          | 94898-500LF    | 92791-001         |                    |      | 84648-500LF                    |   |
| BELOW      | R/A           | 2             | 94898-540LF    | 92791-021         |                    |      | 84648-520LF                    |   |
| BELOW      | R/A           | 4             | 94898-510LF    | 92791-041         |                    |      | 84648-540LF                    |   |
| BELOW      | R/A           | 5             | 94898-520LF    | 92791-051         |                    |      | 84648-550LF                    |   |
| BELOW      | R/A           | 5             | 94898-520LF    | 92791-051         | 93925-004          | 4    | 84648550HLF                    |   |
| BELOW      | SMT-IL        | NONE          | 94898-502      | 92791-001         |                    |      | 84648-502                      |   |
| BELOW      | SMT-IL        | NONE          | 94898-502      | 92791-001         | 93925-001          | 4    | 84648-502H                     |   |
| BELOW      | SMT-STG       | NONE          | 94898-501      | 92791-001         |                    |      | 84648-501                      |   |
| BELOW      | SMT-IL        | NONE          | 94898-502LF    | 92791-001         |                    |      | 84648-502LF                    |   |
| BELOW      | SMT-IL        | NONE          | 94898-502LF    | 92791-001         | 93925-001          | 4    | 84648502HLF                    |   |
| BELOW      | SMT-STG       | NONE          | 94898-501LF    | 92791-001         |                    |      | 84648-501LF                    |   |



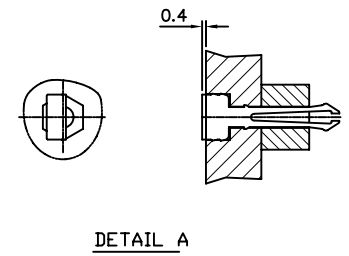
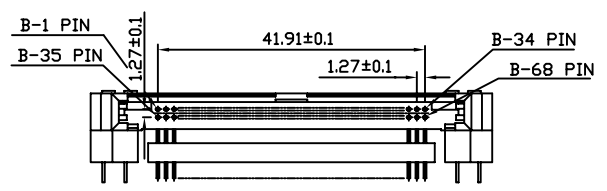
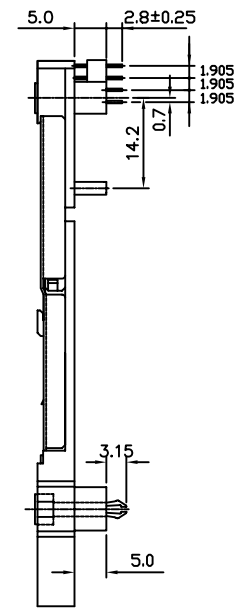
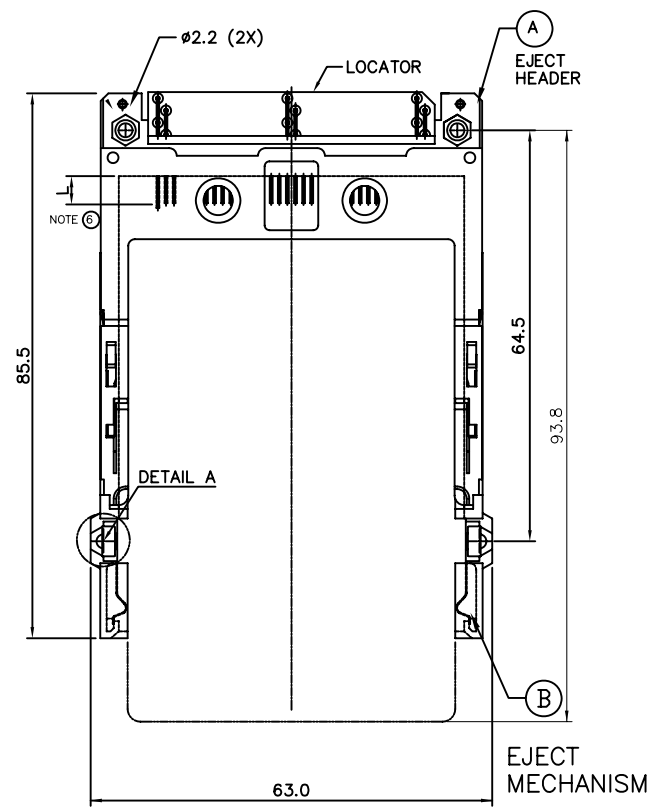
|             |          |                                       |                  |            |                       |
|-------------|----------|---------------------------------------|------------------|------------|-----------------------|
| mat'l. code |          | surface                               | tolerance        | projection | product family        |
| ltr         |          | ISO 1302                              | ISO 406 ISO 1101 | 101        | PCMCIA                |
| ecn no      | dr       | tolerances unless otherwise specified |                  | MM         | title                 |
| v           |          | angles                                | .X±.3            | MM         | 68 POS. 3.3VNON-EJECT |
|             |          | linear                                | .XX±.13          | scale 1:1  | HEADER ASSEMBLY       |
|             |          | ±2'                                   | .XXX±.051        |            | dwg no                |
|             |          | dr                                    | R.GRAPE          | 6/22/98    | sheet 2 of 4          |
|             |          | enr                                   | D.BRANN          | 6/22/98    | size                  |
|             |          | chr                                   | D.BRANN          | 6/22/98    | A4                    |
|             |          | appd                                  | D.BRANN          | 6/22/98    | type                  |
| sheet       | revision |                                       |                  |            | CUSTOMER              |
| index       | sheet    |                                       |                  |            | Drawing               |

FCI CONFIDENTIAL

FCI  
FCIconnect.com

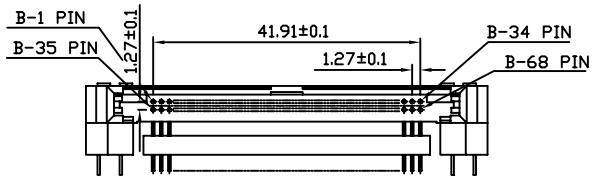
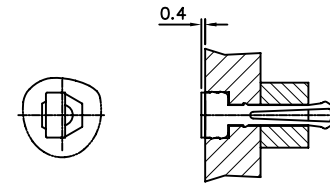
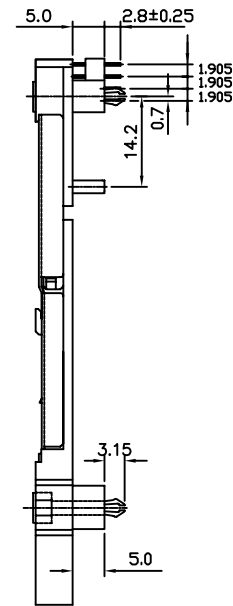
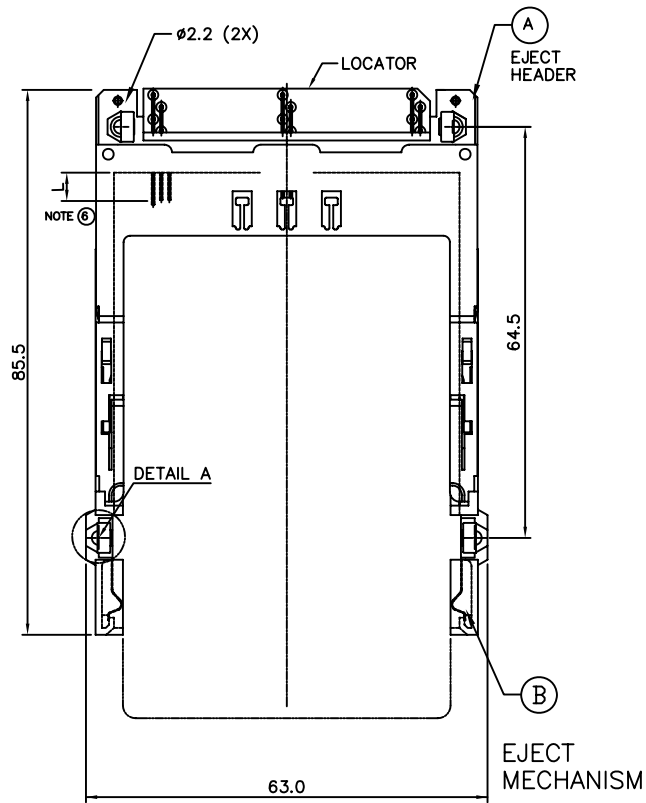
This document is the property of and embodies CONFIDENTIAL and PROPRIETARY information of FCI. No part of the information shown on this document may be used in any way or disclosed to others without the written consent of FCI.  
Copyright FCI

PRODUCT NO.  
84648-055/055LF



|             |          |         |           |                                       |                |  |
|-------------|----------|---------|-----------|---------------------------------------|----------------|--|
| mat'l. code |          | surface | tolerance | projection                            | product family |  |
| ISO 1302    |          | ISO 406 | ISO 1101  |                                       | PCMCIA         |  |
| Ltr         | ecn no   | dr      | date      | tolerances unless otherwise specified |                | title                                    |
| V           |          |         |           | angles                                | .X±.3          | 68 POS. 3.3VNON-EJECT<br>HEADER ASSEMBLY |
|             |          |         |           | linear                                | .XX±.13        |  |
|             |          |         |           | ±2'                                   | .XXX±.051      |  |
|             |          | dr      | R.GRAPE   | 6/22/98                               | MM             | dwg no                                   |
|             |          | enr     | D.BRANN   | 6/22/98                               | scale 1:1      |  |
|             |          | chr     | D.BRANN   | 6/22/98                               |                | 84648                                    |
|             |          | appd    | D.BRANN   | 6/22/98                               |                | A4                                       |
| sheet       | revision |         |           |                                       |                | type                                     |
| index       | sheet    |         |           |                                       |                | CUSTOMER                                 |
|             |          |         |           |                                       |                | Drawing                                  |

PRODUCT NO.  
84648-056HLF



|             |  |          |                               |            |  |
|-------------|--|----------|-------------------------------|------------|--|
| mat'l. code |  | surface  | tolerance                     | projection | product family                           |
|             |  | ISO 1302 | ISO 406 ISO 101               |            | PCMCIA                                   |
| ltr         |  | ecn no   | dr                            | date       | title                                    |
| V           |  |          |                               |            | 68 POS. 3.3VNON-EJECT<br>HEADER ASSEMBLY |
|             |  | angles   | linear                        | MM         | scale 1:1                                |
|             |  | ±2'      | .X±.3<br>.XX±.13<br>.XXX±.051 |            |  |
|             |  | dr       | R.GRAPE                       | 6/22/98    | dwg no                                   |
|             |  | enr      | D.BRANN                       | 6/22/98    | sheet 4 of 4                             |
|             |  | chr      | D.BRANN                       | 6/22/98    | size                                     |
|             |  | appd     | D.BRANN                       | 6/22/98    | A4                                       |
| sheet       |  | revision |                               |            | type                                     |
| index       |  | sheet    |                               |            | CUSTOMER Drawing                         |



This document is the property of and embodies CONFIDENTIAL and PROPRIETARY information of FCI. No part of the information shown on this document may be used in any way or disclosed to others without the written consent of FCI.  
 Copyright FCI

FCI CONFIDENTIAL

FCIconnect.com