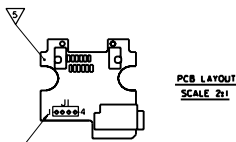
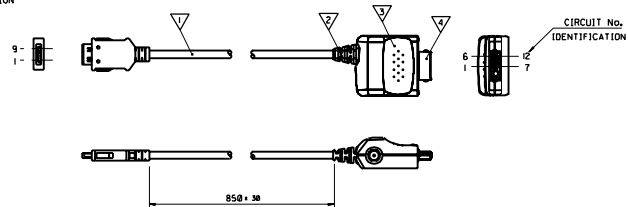


BILL OF MATERIALS

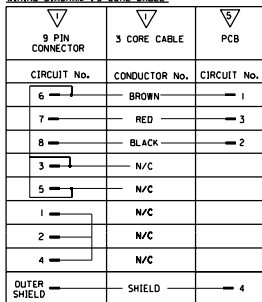
NO.	QTY	SUPPLIER	DESCRIPTION	PART No.	SEE NOTE
1	1	MOLEX	9 PIN CONNECTOR AND 3 CORE CABLE ASSEMBLY REF 2000-0022-01	90848-0352	4, 5
1	1	MOLEX	OVERMOLDED GROMMET AND FERRULE		
1	1	MOLEX	DATA SHELLS KIT	90919-0001	2
1	1	MOLEX	FRICTION LOCK CONTACT UNIT	90982-3001	1, 2
1	1	CDS ELECTRONICS	PRINTED CIRCUIT BOARD	90848-0190	4, 5
1	1	MOLEX	CABLE TIE WRAP	90848-0093	6



CIRCUIT No. IDENTIFICATION



WIRING DIAGRAM 3 CORE CABLE



CABLE SPECIFICATION 3 CORE CABLE

CABLE TYPE: FLAT RIBBED ROUND OTHER
 SPIRAL CABLE YES NO
 NO. OF CONDUCTORS

2. CABLE REQUIREMENTS:
 3. CONDUCTOR SPECIFICATIONS:

CONDUCTOR NO.	CONDUCTOR NO.
1	1, 2 & 3
MATERIAL	TINNED CU
A.W.G.	28
STANDING STIFFNESS	FILLET
TEMPERATURE	N/A
INSULATION	
MATERIAL	PP
WALL THICKNESS	0.100
COLOR	SEE CABLE DIAGRAM/COLOR CODE
OUTSIDE DIAMETER	0.175 ± 0.005
DIRECTION OF LAY	RIGHT
PITCH	0.060 REF
LEAD-BENDING	N/A

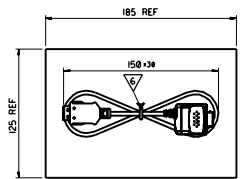
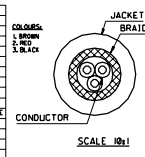
4. FILLER: ENOUGH TO MAKE CABLE ROUND

5. SEPARATOR: TYPE N/A LAY DIRECTION N/A

6. SHIELD: FOIL TYPE N/A FOIL FACING N/A

7. SPIRAL/STRAND: ANG. CONSTRUCTION 36 CONDUCTOR SIZE 0.25 COPPER TYPE TINNED CU COVERAGE 95%

8. CABLE JACKET: TYPE PVC FINAL DIAMETER 0.200 ± 0.012 AVG. THICKNESS 0.100 REF COLOR BLACK FINISH MATL ILL. MATING UL 2125 HARDNESS N/A STRIPABILITY 0500 MARKINGS 2500 037647 00 0 AMP 0000 300 100-1



PACKAGING
SCALE 1x2

I : 1 X
 N.TOWNSE 99/06/10
 D.RYAN 99/06/10
 MWILHITE 99/06/10
 PCMCIA CABLE ASSEMBLY

1/2 . 92601-0049 SD-92601-095 1 OF 1

ORIGINAL RELEASE
 1995-0569
 N.TOWNSE 99/07/13
 A

SMT. 1 OF 1		MRI - SD-92601-095															
MODIFICATION RECORD INDEX																	
ECN	ISS.	DATE	INIT.	SHTS. AFFECTED	DESCRIPTION OF MOD.												
E1999-0569	A	99.07.13	N.T	1	ORIGINAL RELEASE												
<table border="1"> <thead> <tr> <th colspan="2">MOLEX EUROPE</th> <th colspan="4">REVISE ONLY ON CAD SYSTEM</th> </tr> <tr> <td colspan="2"> <small>THE ABOVE CARRIER INFORMATION IS FOR INFORMATION ONLY. MOLEX INC. SHALL NOT BE LIABLE WITHOUT WRITTEN PERMISSION.</small> </td> <td> <small>CAD/CAM FILENAME</small> 190000 </td> <td colspan="3"> <small>ISSUE</small> A </td> </tr> </thead> </table>						MOLEX EUROPE		REVISE ONLY ON CAD SYSTEM				<small>THE ABOVE CARRIER INFORMATION IS FOR INFORMATION ONLY. MOLEX INC. SHALL NOT BE LIABLE WITHOUT WRITTEN PERMISSION.</small>		<small>CAD/CAM FILENAME</small> 190000	<small>ISSUE</small> A		
MOLEX EUROPE		REVISE ONLY ON CAD SYSTEM															
<small>THE ABOVE CARRIER INFORMATION IS FOR INFORMATION ONLY. MOLEX INC. SHALL NOT BE LIABLE WITHOUT WRITTEN PERMISSION.</small>		<small>CAD/CAM FILENAME</small> 190000	<small>ISSUE</small> A														

LEVEL CHART

1	17	33	49
2	18	34	50
3	19	35	51 LEVEL INDEX
4	20	36	52 RESERVED
5	21	37	53 RESERVED
6	22	38	54 Inspection Ballroom
7	23	39	55 DIMENSIONS
8	24	40	56 TABLES/CHARTS
9	25	41	57 REVISION TEXT & MRI
10	26	42	58 Notes/text - English
11	27	43	59 Bill of materials
12	28	44	60 notes/text - german
13	29	45	61
14	30	46	62 notes/text - french
15	31	47	63 RESERVED
16	32	48	