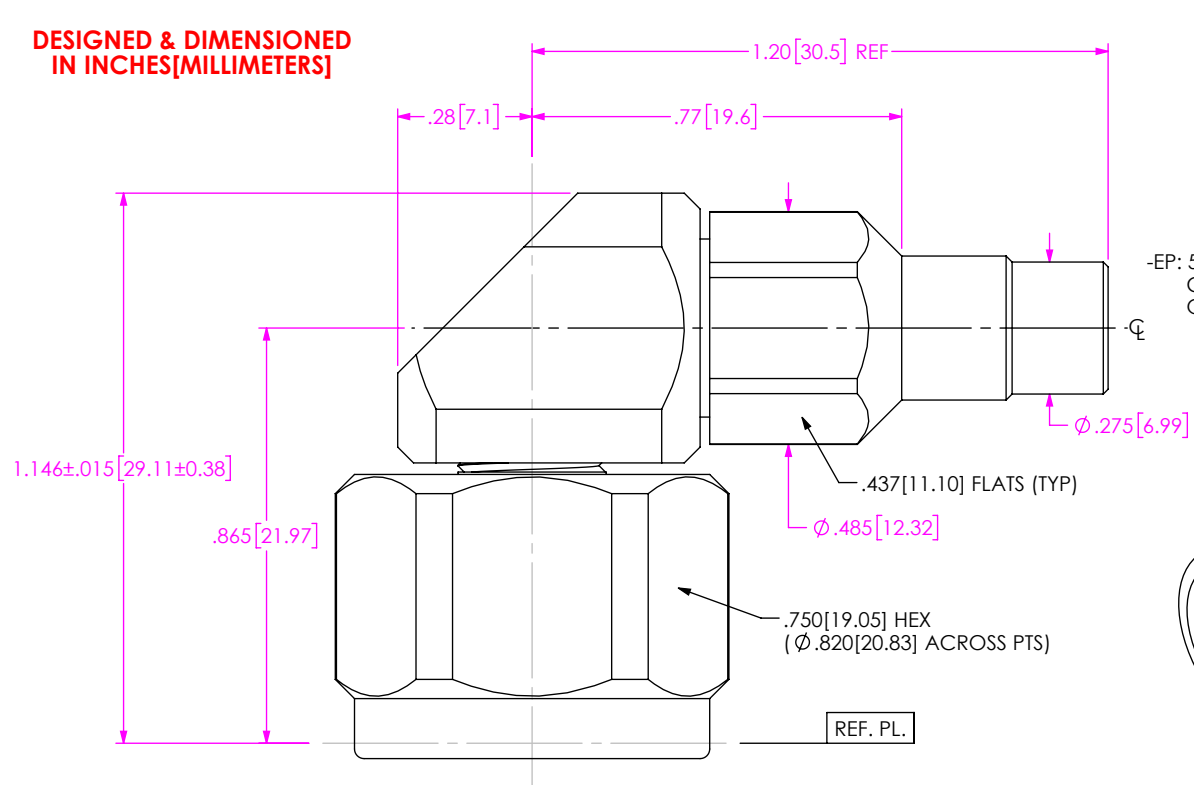


DO NOT SCALE FROM THIS PRINT

DESIGNED & DIMENSIONED IN INCHES[MILLIMETERS]



**PRF06-P-C-EP-190-RS**

SERIES  
-06: NTPE

GENDER  
-P: PLUG

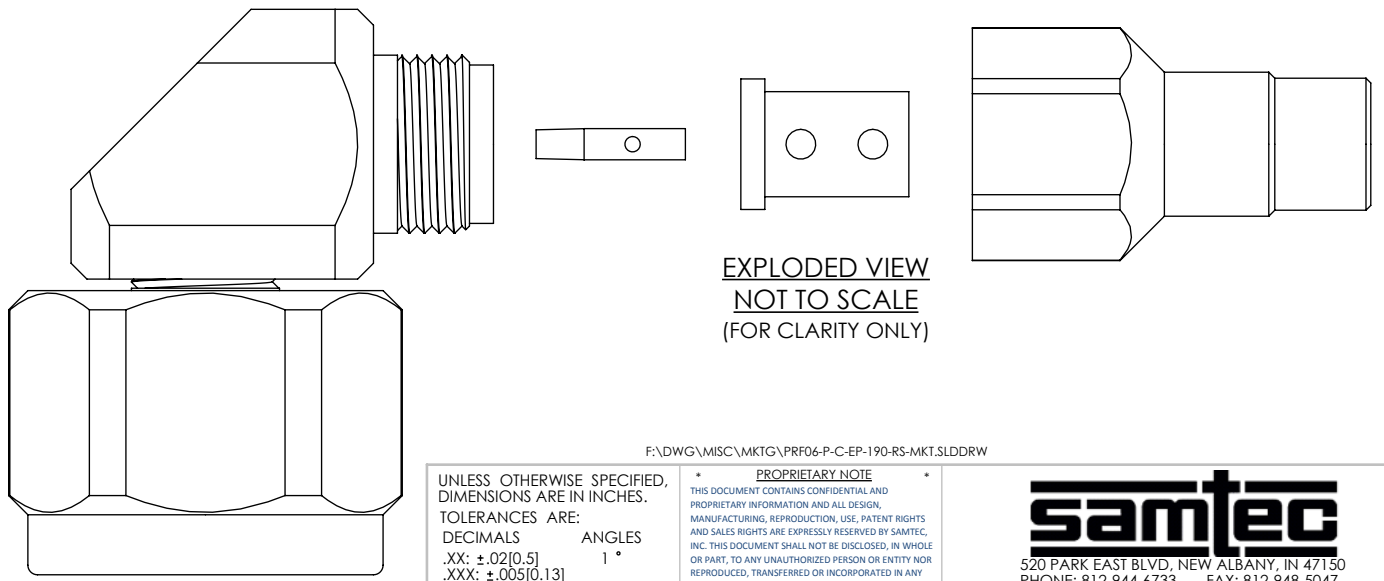
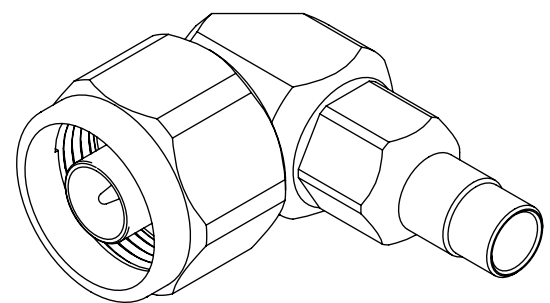
TYPE  
-C: CABLE

FINISH  
-EP: 50μ" EXTRA HEAVY GOLD CENTER CONTACT, PASSIVATED OUTER CONTACT

TERMINATION  
-S: SOLDER CLAMP

ORIENTATION  
-R: RIGHT ANGLE


CABLE TYPE  
-190: SEMFLEX HP190 CABLE



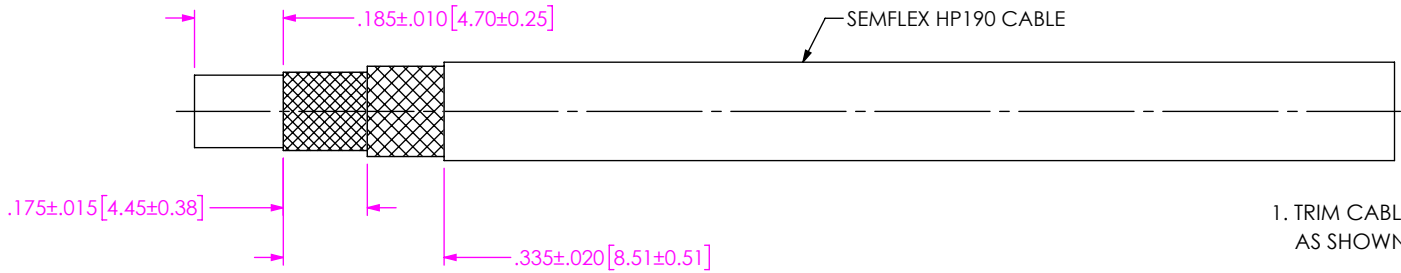
NOTES:

- MATERIAL:**  
BODIES, COUPLING NUT, CLAMP NUT: STAINLESS STEEL  
CONTACTS: BERYLLIUM COPPER  
SOLDER FERRULE: BRASS ALLOY  
INSULATORS: PTFE  
GASKET: SILICONE RUBBER
- FINISH:**  
BODIES, COUPLING NUT, CLAMP NUT: PASSIVATED  
CONTACTS, SOLDER FERRULE: 50μ" MIN. GOLD OVER 50μ" MIN. NICKEL PLATE
- PCI P/N: 3377

F:\DWG\MISC\MKTG\PRF06-P-C-EP-190-RS-MKT.SLDDRW

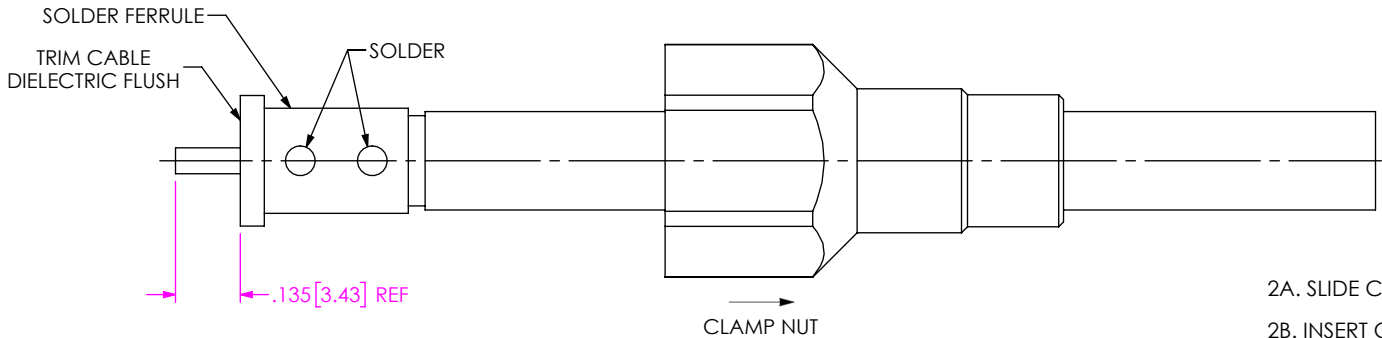
UNLESS OTHERWISE SPECIFIED, DIMENSIONS ARE IN INCHES. TOLERANCES ARE: DECIMALS      ANGLES .XX: ±.02[0.5]      1° .XXX: ±.005[0.13] .XXXX: ±.0005[0.013]	* PROPRIETARY NOTE * THIS DOCUMENT CONTAINS CONFIDENTIAL AND PROPRIETARY INFORMATION AND ALL DESIGN, MANUFACTURING, REPRODUCTION, USE, PATENT RIGHTS AND SALES RIGHTS ARE EXPRESSLY RESERVED BY SAMTEC, INC. THIS DOCUMENT SHALL NOT BE DISCLOSED, IN WHOLE OR PART, TO ANY UNAUTHORIZED PERSON OR ENTITY NOR REPRODUCED, TRANSFERRED OR INCORPORATED IN ANY OTHER PROJECT IN ANY MANNER WITHOUT THE EXPRESS WRITTEN CONSENT OF SAMTEC, INC.	 520 PARK EAST BLVD., NEW ALBANY, IN 47150 PHONE: 812-944-6733      FAX: 812-948-5047 e-Mail: info@SAMTEC.com      code 55322	
	DO NOT SCALE DRAWING      SHEET SCALE: 2.5:1		DESCRIPTION: TYPE N RA PLUG, SOLDER CLAMP FOR SEMFLEX HP190 CABLE
	DWG. NO. <b>PRF06-P-C-EP-190-RS</b>		BY: CANDY W 05/16/2019      SHEET 1 OF 3

# CABLE APPLICATION VIEWS



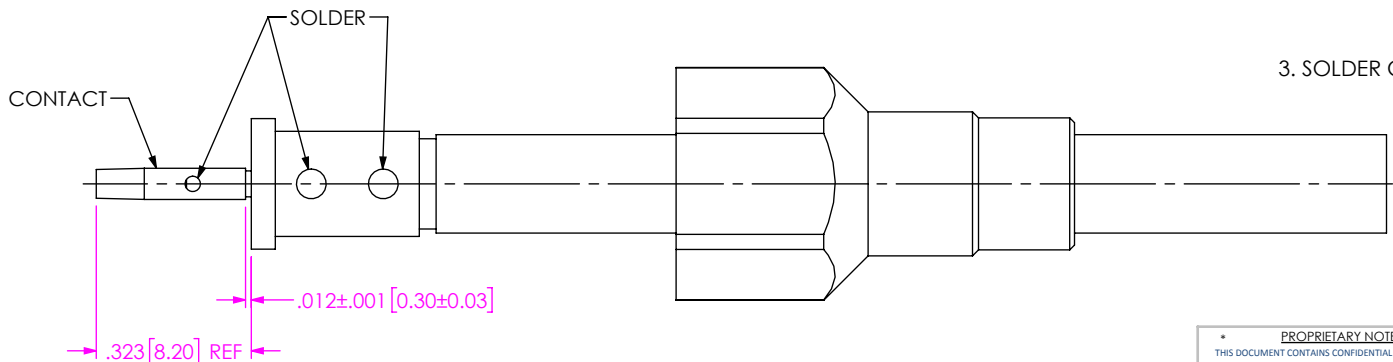
1. TRIM CABLE TO EXPOSE DIELECTRIC CORE AND BRAIDS AS SHOWN.

IN-PROCESS VIEW 1



2A. SLIDE CLAMP NUT OVER CABLE AS SHOWN.  
 2B. INSERT CABLE INTO SOLDER FERRULE UNTIL FWD BRAID SEATS THEN SOLDER BOTH CABLE BRAIDS WHERE SHOWN.  
 2C. TRIM CABLE DIELECTRIC FLUSH TO SOLDER FERRULE.

IN-PROCESS VIEW 2



3. SOLDER CONTACT WITH GAP INDICATED AS SHOWN.

IN-PROCESS VIEW 3

**PROPRIETARY NOTE**  
 THIS DOCUMENT CONTAINS CONFIDENTIAL AND PROPRIETARY INFORMATION AND ALL DESIGN, MANUFACTURING, REPRODUCTION, USE, PATENT RIGHTS AND SALES RIGHTS ARE EXPRESSLY RESERVED BY SAMTEC, INC. THIS DOCUMENT SHALL NOT BE DISCLOSED, IN WHOLE OR PART, TO ANY UNAUTHORIZED PERSON OR ENTITY NOR REPRODUCED, TRANSFERRED OR INCORPORATED IN ANY OTHER PROJECT IN ANY MANNER WITHOUT THE EXPRESS WRITTEN CONSENT OF SAMTEC, INC.



520 PARK EAST BLVD, NEW ALBANY, IN 47150  
 PHONE: 812-944-6733 FAX: 812-948-5047  
 e-Mail info@SAMTEC.com code 55322

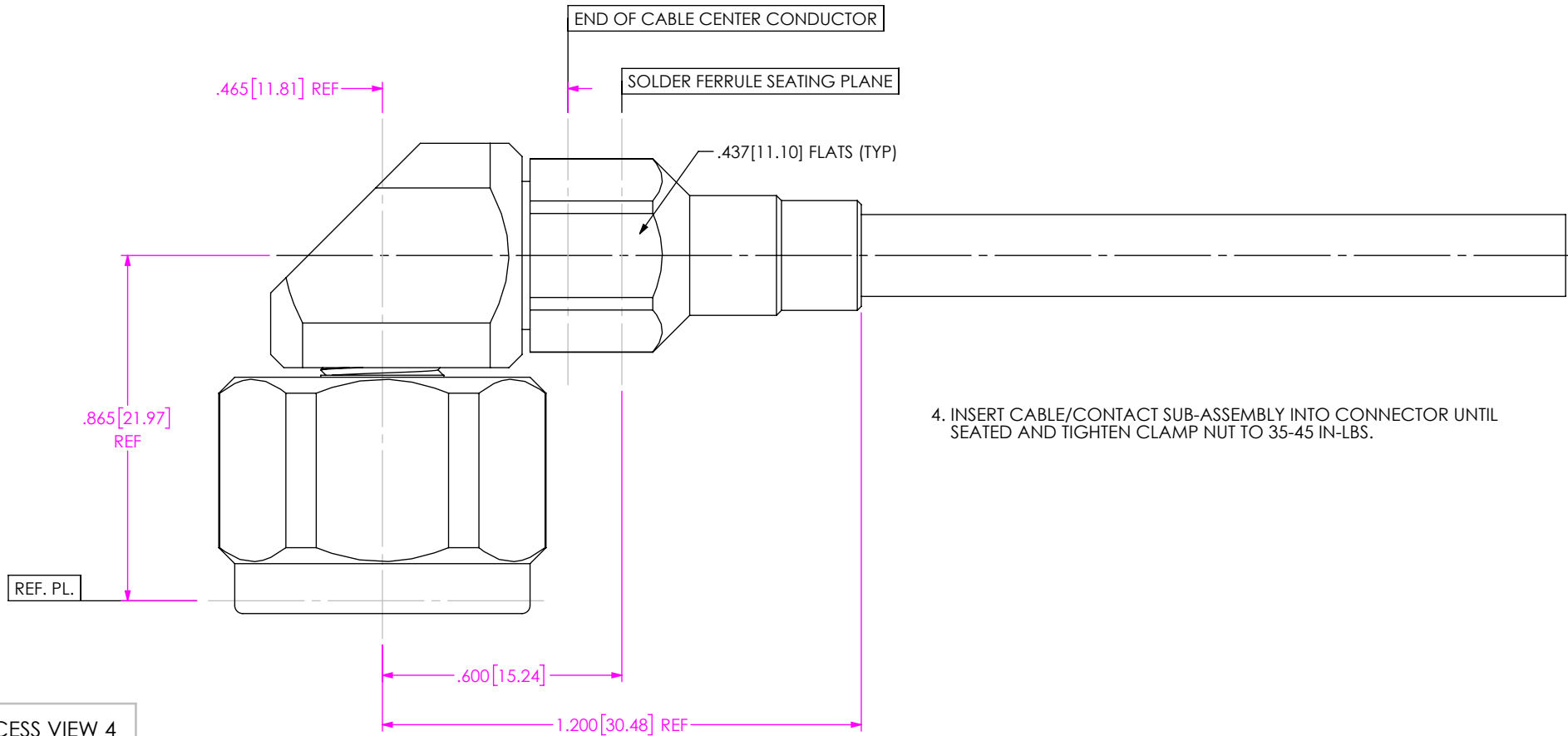
DO NOT SCALE DRAWING  
 SHEET SCALE: 2.5:1

DESCRIPTION: TYPE N RA PLUG, SOLDER CLAMP FOR SEMFLEX HP190 CABLE

DWG. NO. PRF06-P-C-EP-190-RS

BY: CANDY W 05/16/2019 SHEET 2 OF 3

# CABLE APPLICATION VIEWS



IN-PROCESS VIEW 4

**PROPRIETARY NOTE**  
 THIS DOCUMENT CONTAINS CONFIDENTIAL AND PROPRIETARY INFORMATION AND ALL DESIGN, MANUFACTURING, REPRODUCTION, USE, PATENT RIGHTS AND SALES RIGHTS ARE EXPRESSLY RESERVED BY SAMTEC, INC. THIS DOCUMENT SHALL NOT BE DISCLOSED, IN WHOLE OR PART, TO ANY UNAUTHORIZED PERSON OR ENTITY NOR REPRODUCED, TRANSFERRED OR INCORPORATED IN ANY OTHER PROJECT IN ANY MANNER WITHOUT THE EXPRESS WRITTEN CONSENT OF SAMTEC, INC.



520 PARK EAST BLVD, NEW ALBANY, IN 47150  
 PHONE: 812-944-6733 FAX: 812-948-5047  
 e-Mail info@SAMTEC.com code 55322

DO NOT SCALE DRAWING  
 SHEET SCALE: 2.5:1

DESCRIPTION: TYPE N RA PLUG, SOLDER CLAMP FOR SEMFLEX HP190 CABLE  
 DWG. NO. PRF06-P-C-EP-190-RS  
 BY: CANDY W 05/16/2019 SHEET 3 OF 3