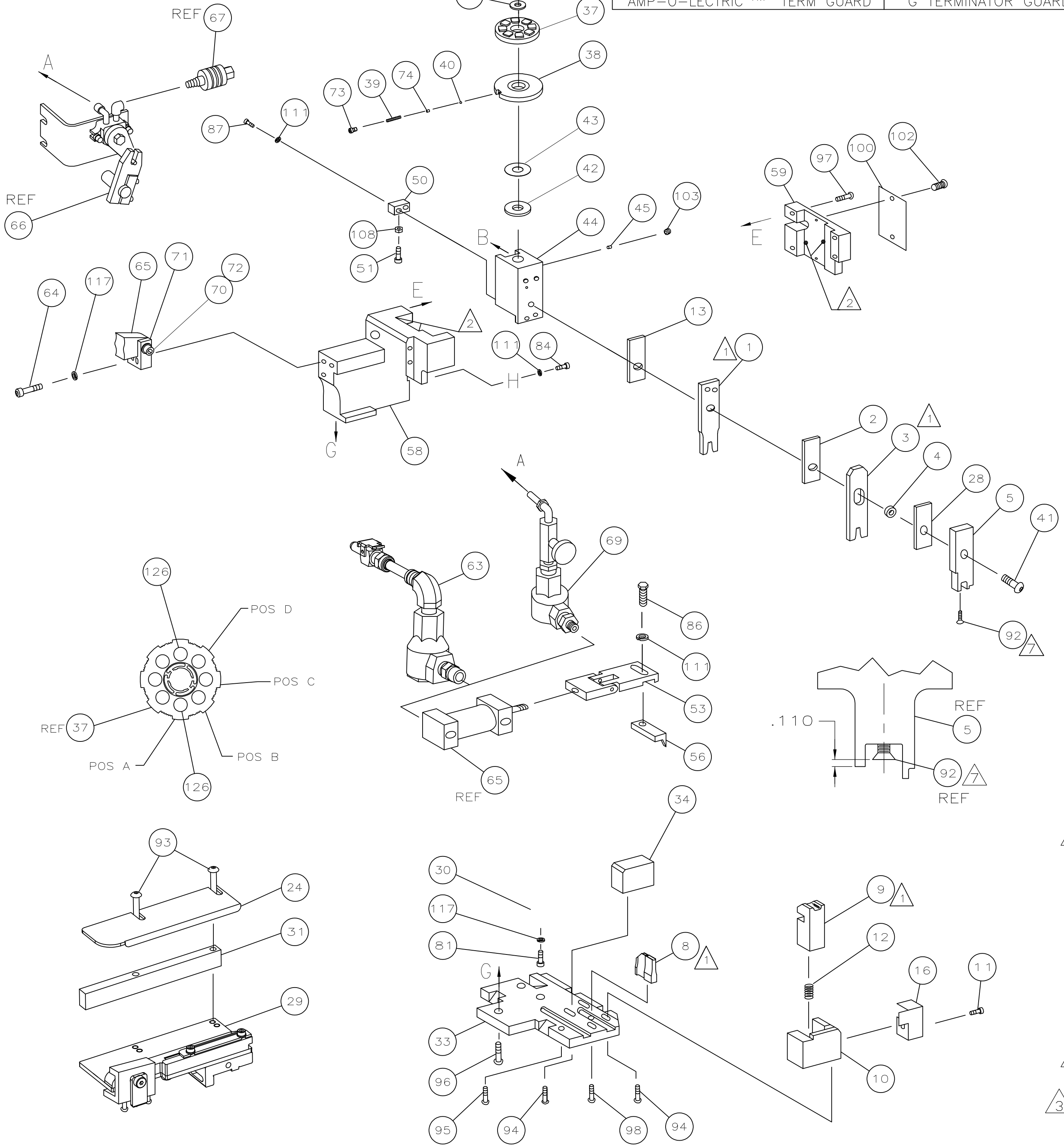
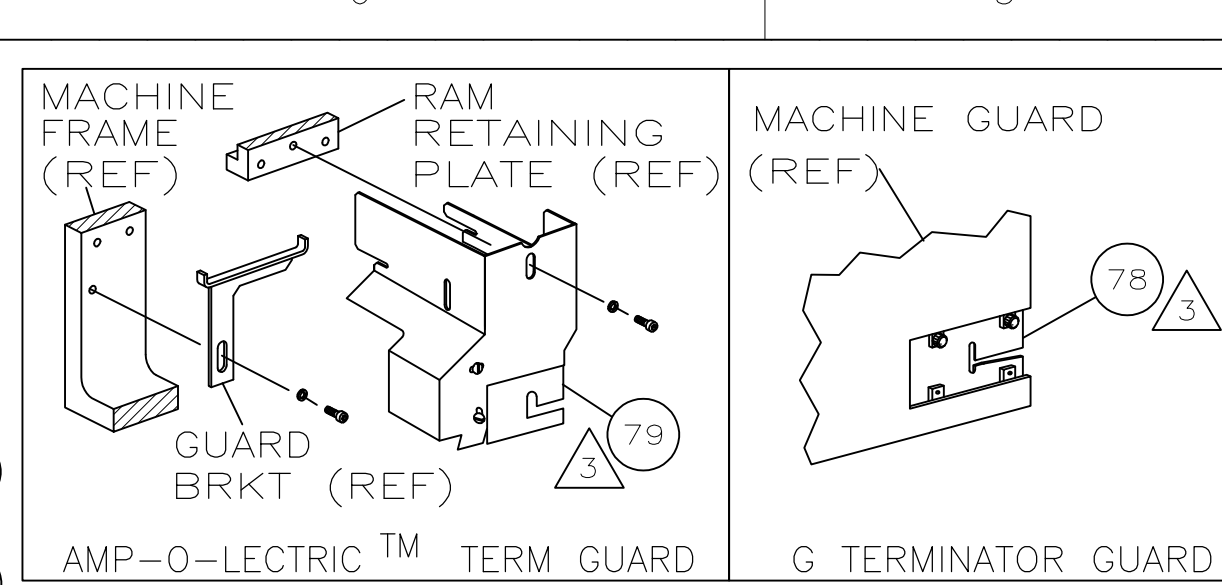


THIS DRAWING IS UNPUBLISHED. RELEASED FOR PUBLICATION
 COPYRIGHT BY TYCO ELECTRONICS CORPORATION. ALL INTERNATIONAL RIGHTS RESERVED.

PART NUMBER	REV	FIRST USED
1852196-1	B	122500-1
1852196-2	B	565435-5
1852196-3	B	354500-1



TERMINAL NAME: FEMALE

AMP TERM PN	MFR TERM PN	YAZAKI TERMINAL	AMP CRIMP SPECS
1572942	7116-4143-02		
		PAD LTR	CRIMP HEIGHT
		A	2.25 ±0.05 [.089 ±.002]
		B	NOT USED
		C	NOT USED
		D	NOT USED
		CRIMP	SIZE
		WIRE	.157 [3.99mm]
		INSUL	.240 [6.09mm]
		FEED	0
		APPL INSTRUCTION	408-8040
		SET UP GAGE	458637-1
		LAYOUT	L1852196
		TYPE	RANGE
		F	10 AWG
		WIRE	3.80-4.05mm
WIRE STRIP LENGTH	TERM APPL SPEC	FEED	APPL INSTRUCTION
-	NONE	.870	408-8040

WIRE STRIP LENGTH	TERM APPL SPEC	FEED	APPL INSTRUCTION	SET UP GAGE	LAYOUT
-	NONE	.870	408-8040	458637-1	L1852196

QTY REQD	PER ASSY	PART NO	DESCRIPTION	ITEM NO	
				129	
				128	
				127	
2	2	2	7-354778-7	PIN, WIRE DISC (.2880)A	126
1	1	1	986950-1	WASHER, FLAT PRECISION	125
1	1	1	217238-1	GENERAL INSTRUCTION PACKAGE	124
1	1	1	4088040	SF APPL INST 408-8040	123
				122	
				121	
				120	
				119	
				118	
3	3	3	21024-5	WASHER, LOCK(#10)ADJ BLOCK	117
				116	
				115	
				114	
				113	
				112	
4	4	4	21024-4	WASHER, LOCK(#8)STRIPPER	111
				110	
				109	
1	1	1	21018-5	NUT, HEX(NO.6)HOLDDOWN	108
				107	
				106	
				105	
				104	
1	1	1	21009-2	SCR,SKT SET(1/4-20x.25 LW)RAM	103
2	2	2	21017-2	SCR,DRIVE(#2x.19)ID PLATE	102
				101	
1	1	1	461264-1	PLATE, IDENTIFICATION	100
				99	
1	1	1	22733-8	SCR,BHC(8-32x.38 LW)ANVIL	98
4	4	4	2-21002-9	SCR,BHC(10-32x.75)CAP	97
3	3	3	2-22733-8	SCR,BHC(1/4-20x.62)HSG	96
1	1	1	2-21002-7	SCR,BHC(10-32x.50)SG ADJ BLK	95
4	4	4	2-21002-2	SCR,BHC(8-32x.50)TERM H DWN	94
2	2	2	2-21002-4	SCR,BHC(8-32x.75)CAP	93
1	1	1	1-21003-9	SCR,FHC(6-32x.38)DEP	92
				91	
				90	
				89	
				88	
2	2	2	2-21000-7	SCR,SHC(8-32x.44)DEP-HOLD	87
1	1	1	2-22603-0	SCR,HEX HD(8-32x.38)FEED FINGER	86
				85	
1	1	1	2-21000-7	SCR,SHC(8-32x.50)STRIPPER	84
				83	
				82	
1	1	1	3-21000-4	SCR,SHC(10-32x.38)SG ADJ BL	81
				80	
-	1	-	462992-7	GUARD ASSY	79
REF	-	-	354529-1	INSERT, GUARD	78
				77	
				76	
				75	
1	1	1	690603-1	SPRING, ASSIST	74
1	1	1	23030-1	SCR,SHC(6-32x.25 SL)INS DISC	73
1	1	1	3-21001-5	SCR,SHC(3/8-16x1.00)AIR FEED	72
1	1	1	459610-1	MOUNT, FEED BRACKET	71
-3	-2	-1	U/M		

QTY REQD	PER ASSY	PART NO	DESCRIPTION	ITEM NO
-3	-2	-1	U/M	

THIS DRAWING IS A CONTROLLED DOCUMENT.

DIMENSIONS: INCHES
 TOLERANCES UNLESS OTHERWISE SPECIFIED:
 0. PLC ± .001
 1. PLC ± .002
 2. PLC ± .003
 3. PLC ± .004
 4. PLC ± .005

MATERIAL: - FINISH: -

WEIGHT: F

CUSTOMER DRAWING

LOC: A DIST: 66

REVISIONS:

DESCRIPTION	DATE	BY	APPV
B ECR-09-009983	5-2009	MY	TE

REV	DESCRIPTION	ITEM NO
-1	LEADMAKER	AIRFEED
-2	BENCH MODEL K	AIRFEED
-3	BENCH MODEL G	AIRFEED

QTY REQD	PER ASSY	PART NO	DESCRIPTION	ITEM NO	
1	1	1	21024-8	WASHER, LOCK 3/8	70
-	1	-	692655-5	AIR FEED VALVE ASSY	69
					68
-	REF	-	24042-2	VALVE, SHUT OFF	67
-	REF	-	692655-6	AIR FEED VALVE ASSY	66
1	1	1	461065-1	AIR FEED ASSY (1 INCH)	65
2	2	2	3-21000-9	SCR,SHC(10-32x1.00)AIR ASSY	64
1	-	1	692655-7	AIR FEED VALVE	63
					62
					61
					60
1	1	1	454220-1	CAP, RAM	59
1	1	1	454485-1	HOUSING	58
					57
1	1	1	458537-2	PAWL, FEED	56
					55
					54
1	1	1	461062-1	FEED FINGER ASSY	53
					52
1	1	1	811242-2	BUMPER, HOLDDOWN	51
1	1	1	690753-1	SPACER, TONKER	50
					49
					48
					47
					46
1	1	1	690191-1	PLUG, NYLON	45
1	1	1	819307-4	RAM	44
1	1	1	690125-1	WASHER, LAMINATED	43
1	1	1	690124-1	WASHER, RAM	42
1	1	1	7-21002-9	BOLT, CRIMPER(5/16x1.00)	41
1	1	1	23241-6	BALL, STEEL	40
1	1	1	690170-1	SPRING, COMPRESSION	39
1	1	1	1-690142-3	DISC, INSULATION	38
1	1	1	354777-1	DISC, WIRE	37
1	1	1	22480-5	WASHER, SPRING	36
1	1	1	690212-1	POST, RAM	35
1	1	1	690786-3	SUPPORT, TERMINAL	34
1	1	1	318055-4	PLATE, BASE	33
					32
1	1	1	1-1320908-2	SPACER, STRIP GUIDE	31
1	1	1	455689-1	BLOCK, STRIP GUIDE ADJ	30
1	1	1	1633091-7	STRIP GUIDE ASSEMBLY	29
1	1	1	455888-8	SPACER, FRONT SHEAR DEP	28
					27
					26
					25
1	1	1	1320928-1	GUIDE, STRIP (REAR)	24
					23
-	-	1	690472-2	STRIPPER	22
					21
					20
1	1	-	619353-1	STRIPPER	19
					18
					17
1	1	1	318563-1	GUARD, CHIP, FRONT	16
					15
					14
1	1	1	455888-5	SPACER, CRIMPER	13
1	1	1	3-22280-3	SPRING, SHEAR	12
1	1	1	1-21000-9	STOP, SHEAR	11
1	1	1	2-690459-2	HOLDER, SHEAR (FRONT)	10
1	1	1	318059-4	SHEAR, FLOAT (FRONT)	9
1	1	1	1633332-2	ANVIL	8
					7
					6
1	1	1	122399-4	DEPRESSOR, SHEAR (FRONT)	5
1	1	1	238011-2	SPACER, BLOCK CRIMPER	4
1	1	1	6-1583690-3	CRIMPER, INSULATION	3
1	1	1	2-455888-1	SPACER, CRIMPER	2
1	1	1	4-1633305-7	CRIMPER, WIRE	1
-3	-2	-1	U/M		

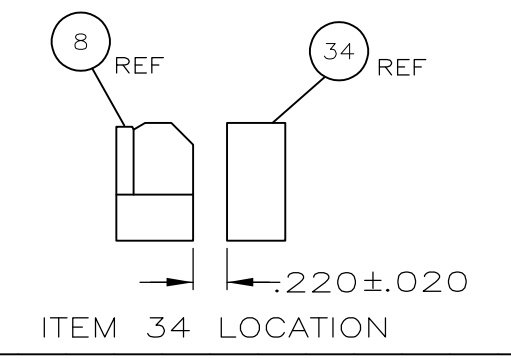
THIS DRAWING IS A CONTROLLED DOCUMENT.

DIMENSIONS: INCHES
 TOLERANCES UNLESS OTHERWISE SPECIFIED:
 0. PLC ± .001
 1. PLC ± .002
 2. PLC ± .003
 3. PLC ± .004
 4. PLC ± .005

MATERIAL: - FINISH: -

WEIGHT: F

CUSTOMER DRAWING



- ① RECOMMENDED SPARE PARTS.
- ② GREASE LIGHTLY.
- ③ GUARD MUST BE IN PLACE WHEN OPERATING APPLICATOR IN A BENCH MACHINE.
- ④ SEE DRAWING FOR COMPONENTS
- ⑤ CUT TO LENGTH AT ASSY
- ⑥ THIS APPLICATOR APPLIES TERMINAL WITH A SEAL.
- ▲ APPLY TORQ-SEAL IN ALLEN SOCKET TO FILL HOLE AFTER FLAT HD HAS BEEN ADJUSTED TO CORRECT HEIGHT AT QUALIFICATION. APPLY PN 1-23419-5 LOC-TITE TO THREADS.

BENCH MACHINE & LEADMAKER