

# STRAIGHT PLUG FEAMLE

### WIRING DIAGRAM M12 FEMALE:

3 WIRES

VIEW FROM FRONT SIDE

Pin	Wire color
1	Brown
2	-
3	Blue
4	Black

4 WIRES

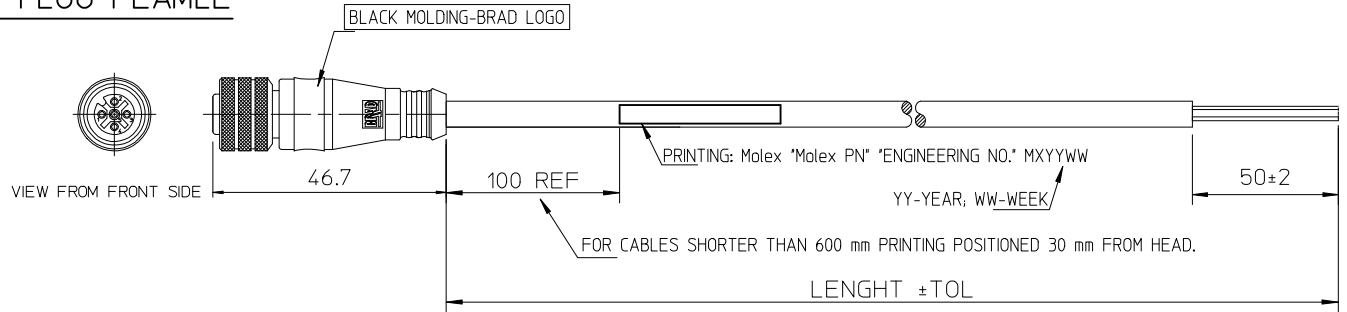
VIEW FROM FRONT SIDE

Pin	Wire color
1	Brown
2	White
3	Blue
4	Black

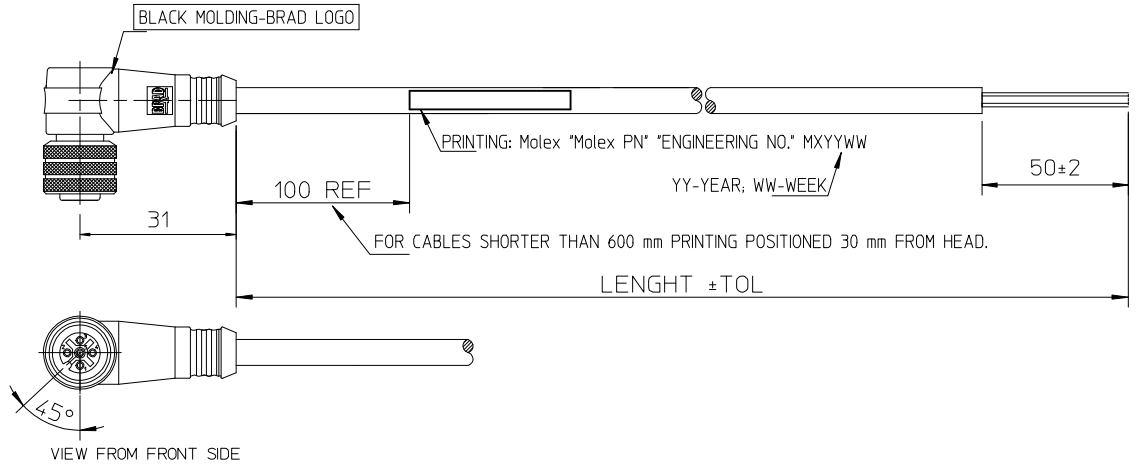
5 WIRES

VIEW FROM FRONT SIDE

Pin	Wire color
1	Brown
2	White
3	Blue
4	Black
5	Grey



# 90° - PLUG



### ENGINEERING P/N KEY DECODING:

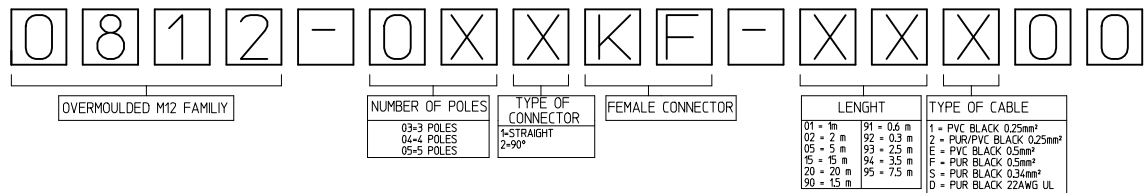


TABLE OF TOLERANCES						
CABLE LENGTH IN METER	TILL/DO	OVER - TILL	OVER - TILL	OVER	OVER	OVER
	1m	1-5m	5-10m	10m	20m	30m
MANUFACTURING TOLERANCES MM						
M8/M12 CABLE CONNECTOR MALE OR FEMALE	+20 -10	+25	+30	+30	+50	+60
M8/M12 CABLE CONNECTOR JUMPERCABLE	+20 -10	+25	+30	+30	+50	+60
M23 CABLE CONNECTOR MALE OR FEMALE			+50	+50	+50	+60
M23 CABLE CONNECTOR JUMPERCABLE			+50	+50	+50	+60

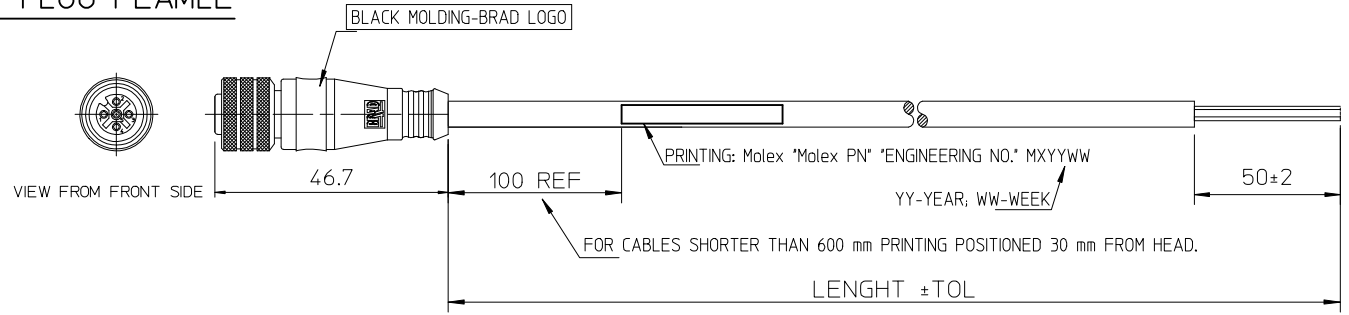
<p><b>PRINTING UPDATE</b></p> <p>EC NO: IPG2015-1471</p> <p>DRWN: JMARSZALEK 2013/09/25</p> <p>CHKD: MSZWAJKOWSKI 2013/09/25</p> <p>APPR: MIWASIECZKO 2015/03/20</p>	<p>QUALITY SYMBOLS</p> <p>▽=0</p> <p>◻=0</p>	<p>GENERAL TOLERANCES (UNLESS SPECIFIED)</p> <table border="1" style="width: 100%; text-align: center;"> <thead> <tr> <th></th> <th>mm</th> <th>INCH</th> </tr> </thead> <tbody> <tr><td>4 PLACES</td><td>± ---</td><td>± ---</td></tr> <tr><td>3 PLACES</td><td>± ---</td><td>± ---</td></tr> <tr><td>2 PLACES</td><td>± ---</td><td>± ---</td></tr> <tr><td>1 PLACE</td><td>± ---</td><td>± ---</td></tr> <tr><td>0 PLACE</td><td>± ---</td><td>± ---</td></tr> </tbody> </table>		mm	INCH	4 PLACES	± ---	± ---	3 PLACES	± ---	± ---	2 PLACES	± ---	± ---	1 PLACE	± ---	± ---	0 PLACE	± ---	± ---	<p>DIMENSION STYLE</p> <p><b>MM ONLY</b></p>	<p>SCALE</p> <p>---</p>	<p>DESIGN UNITS</p> <p><b>METRIC</b></p>	<p>FIRST ANGLE PROJECTION</p>	<p>TITLE</p> <p style="font-size: 24px; font-weight: bold;">CSE M12 XP AC FE XM SE</p>
		mm	INCH																						
	4 PLACES	± ---	± ---																						
	3 PLACES	± ---	± ---																						
2 PLACES	± ---	± ---																							
1 PLACE	± ---	± ---																							
0 PLACE	± ---	± ---																							
		<p>DRAFT WHERE APPLICABLE MUST REMAIN WITHIN DIMENSIONS</p>	<p>DRAWN BY</p> <p>HWALCZAK</p> <p>DATE</p> <p>2012/05/10</p>	<p>CHECKED BY</p> <p>DATE</p>	<p>APPROVED BY</p> <p>MDYSZEWSKA</p> <p>DATE</p> <p>2012/05/28</p>	<p>MATERIAL NO.</p> <p><b>SEE KEY</b></p>	<p>DOCUMENT NO.</p> <p><b>SD-120065-053</b></p>	<p>SHEET NO.</p> <p>1 OF 1</p>																	
			<p>SIZE</p> <p><b>A3</b></p>	<p>THIS DRAWING CONTAINS INFORMATION THAT IS PROPRIETARY TO MOLEX INCORPORATED AND SHOULD NOT BE USED WITHOUT WRITTEN PERMISSION</p>																					

# STRAIGHT PLUG FEAMLE

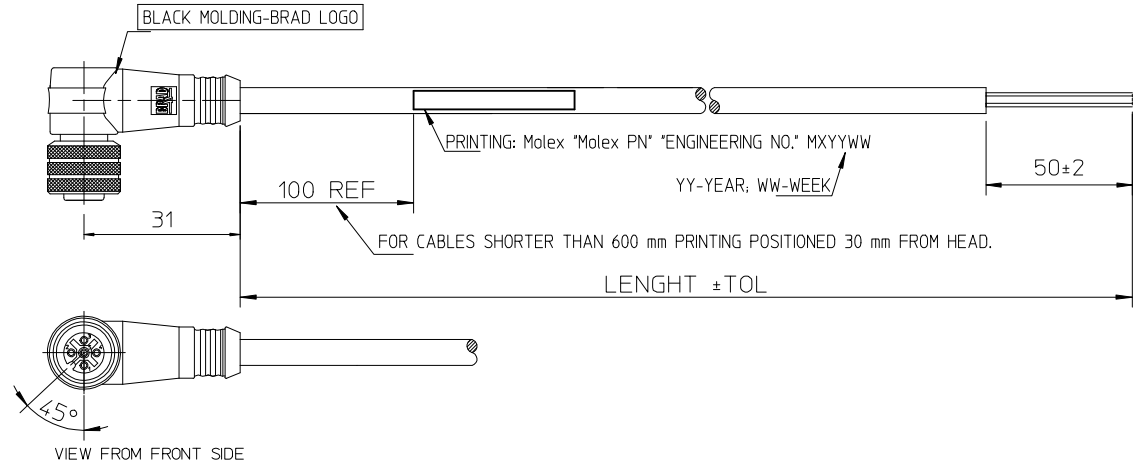
10 9 8 7 6 5 4 3 2 1

## WIRING DIAGRAM M12 FEMALE:

3 WIRES		4 WIRES		5 WIRES	
1	2	1	2	1	2
3	4	3	4	3	4
5		5		5	
VIEW FROM FRONT SIDE		VIEW FROM FRONT SIDE		VIEW FROM FRONT SIDE	
3 WIRES		4 WIRES		5 WIRES	
Pin	Wire color	Pin	Wire color	Pin	Wire color
1	Brown	1	Brown	1	Brown
2	-	2	White	2	White
3	Blue	3	Blue	3	Blue
4	Black	4	Black	4	Black
		5	Grey	5	Grey



## 90° - PLUG



## ENGINEERING P/N KEY DECODING:

0	8	1	2	-	0	X	X	K	F	-	X	X	X	0	0
OVERMOULDED M12 FAMILY					NUMBER OF POLES		TYPE OF CONNECTOR		FEMALE CONNECTOR		LENGTH		TYPE OF CABLE		
					03-3 POLES	1-STRAIGHT				01 = 1m		1 = PVC BLACK 0.25mm <sup>2</sup>			
					04-4 POLES	2-90°				02 = 2 m		2 = PUR/PVC BLACK 0.25mm <sup>2</sup>			
					05-5 POLES					05 = 5 m		3 = PUR BLACK 0.5mm <sup>2</sup>			
										15 = 15 m		4 = PUR BLACK 0.5mm <sup>2</sup>			
										20 = 20 m		5 = PUR BLACK 0.34mm <sup>2</sup>			
										90 = 90 m		0 = PUR BLACK 22AWG UL			

CABLE LENGTH IN METER	TILL/DO	OVER - TILL	OVER - TILL	OVER	OVER	OVER
	1m	1-5m	5-10m	10m	20m	30m
MANUFACTURING TOLERANCES MM						
M8/M12 CABLE CONNECTOR MALE OR FEMALE	+20 -10	+25	+30	+30	+50	+60
M8/M12 CABLE CONNECTOR JUMPERCABLE	+20 -10	+25	+30	+30	+50	+60
M23 CABLE CONNECTOR MALE OR FEMALE			+50	+50	+50	+60
M23 CABLE CONNECTOR JUMPERCABLE			+50	+50	+50	+60

<b>PRINTING UPDATE</b> EC NO: IPG2015-1471 DRWN: JMARSZALEK 2013/09/25 CHKD: MSZWAJKOWSKI 2013/09/25 APPR: MIWASIECZKO 2015/03/20	QUALITY SYMBOLS	GENERAL TOLERANCES (UNLESS SPECIFIED)	DIMENSION STYLE	SCALE	DESIGN UNITS	FIRST ANGLE PROJECTION
	▼=0 ◻=0	mm INCH 4 PLACES ± --- ± --- 3 PLACES ± --- ± --- 2 PLACES ± --- ± --- 1 PLACE ± --- ± --- 0 PLACE ± --- ± ---	MM ONLY	---	METRIC	□ ⊙ FIRST ANGLE PROJECTION
	DRAFT WHERE APPLICABLE MUST REMAIN WITHIN DIMENSIONS	DRAWN BY: HWALCZAK DATE: 2012/05/10 CHECKED BY: _____ DATE: _____ APPROVED BY: MDYSZEWSKA DATE: 2012/05/28	TITLE	CSE M12 XP AC FE XM SE		
	MATERIAL NO. SEE KEY SIZE A3 THIS DRAWING CONTAINS INFORMATION THAT IS PROPRIETARY TO MOLEX INCORPORATED AND SHOULD NOT BE USED WITHOUT WRITTEN PERMISSION	ANGULAR ± --- °	MATERIAL NO. SD-120065-053 DOCUMENT NO. SD-120065-053 SHEET NO. 1 OF 1	<b>molex</b>		

9 8 7 6 5 4 3 2 1