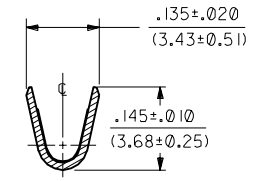
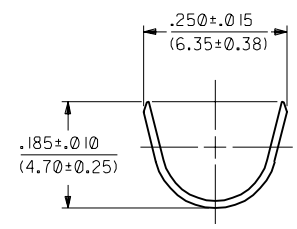
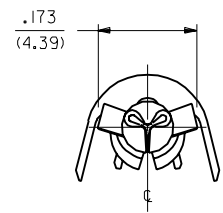


PART NO.	ENG. NO.	
02-09-2170	42138-(P90)I	
02-09-2171	42138-(P90)IL	
02-09-2172	42138-(P90)I	OBSOLETE
02-09-2173	42138-(P90)IL	
	-	
	-	

42138



LEGEND

42138-*(****)*

CRIMP STYLE
BLANK="A"
I="B"

FORM
BLANK=CHAIN
L=LOOSE

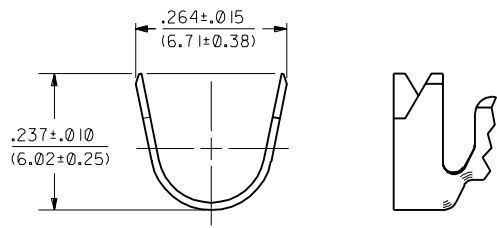
P=PREPLATE
BLANK=POSTPLATE

FINISH CODE

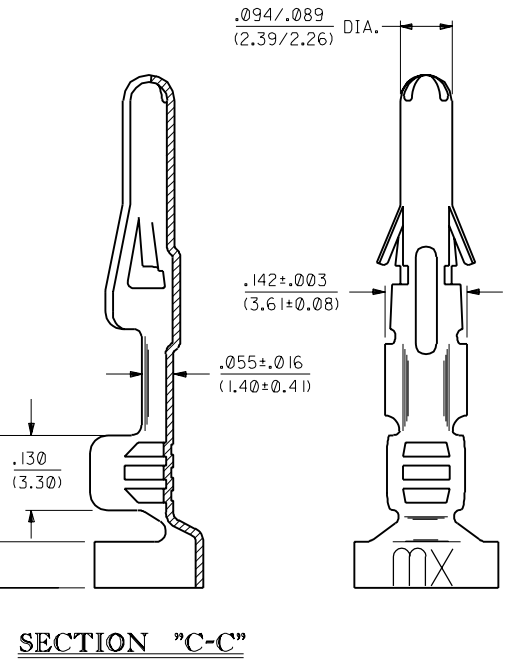
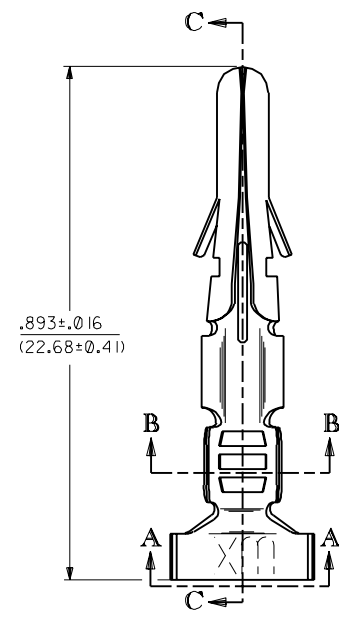
VIEW "A-A"
CRIMP STYLE "A"

SECTION "B-B"

FINISHES, PER ES-88:
901 HOT TIN DIP .000020/(0.0005) MIN.



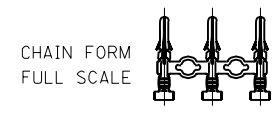
VIEW "A-A"
CRIMP STYLE "B"



SECTION "C-C"

- NOTES:
- TERMINAL FOR USE WITH .093/(2.36) SERIES HOUSINGS AND WILL ACCEPT 14 THRU 18 AWG WIRE.
 - INSULATION CRIMP STYLE "A" ACCEPTS A MAX. INSULATION DIA. OF .180/(4.57). INSULATION CRIMP STYLE "B" IS INTENDED FOR DOUBLE CRIMP OF TWO 18 AWG WIRES; ONE WITH A MAX. INSULATION DIA. OF .170/(4.32), THE OTHER A MAX. INSULATION DIA. OF .110/(2.79).

MATERIAL:
CARTRIDGE BRASS, ALLOY #C26000,
.013/(0.33) THICK, SPRING TEMPER.



H	OBSOLETE P/N UCR2002-0270 COMERCI 01/10/99
GI	REVISED EOR U3 0507 STAMBAUGH 99-2-9
G	REVISE PER EOR U3 0507 GIC 4/1/93 RW
F	REVISE PER EOR U3 0159 GIC 2/9/93 RW
E	REVISE PER EOR U2 0674 GIC 4/28/92 RW
D	REVISE & REDRAW PER EOR U2 0081 GIC 2/21/92 RW

DIMENSIONS SHOWN (METRIC) INCH		▽ = 0		▽ = 0		REVISE ONLY ON CAD SYSTEM	
UNLESS OTHERWISE SPECIFIED TOLERANCES ANGULAR ± 1/2°		TITLE		CRIMP TERMINAL, MALE .093/(2.36) DIA. 14-18 AWG W/LARGE INSUL.		SHEET NO. DATE 1 of 1 2/21/92	
INCH METRIC		MOLEX INCORPORATED		U.S.A.		PART NO. DRWG. NO. SD-42138-*	
3 PLACE ± .010 ---		L15LEJLL		60532		FILE NAME S42138X1	
2 PLACE ± .014 ± 0.25		DRAWN BY		GIC		CHK'D BY RW	
1 PLACE --- ± 0.35		APP'D BY		RS		SCALE 6 : 1	
DRAFT WHERE APPLICABLE MUST REMAIN WITHIN DIMENSIONS		THIS DRAWING CONTAINS INFORMATION THAT IS PROPRIETARY TO MOLEX INC. AND SHOULD NOT BE USED WITHOUT WRITTEN PERMISSION.		DIV. CP		SIZE C	

42138

MFG. SH. REV. LTR. REVISIONS