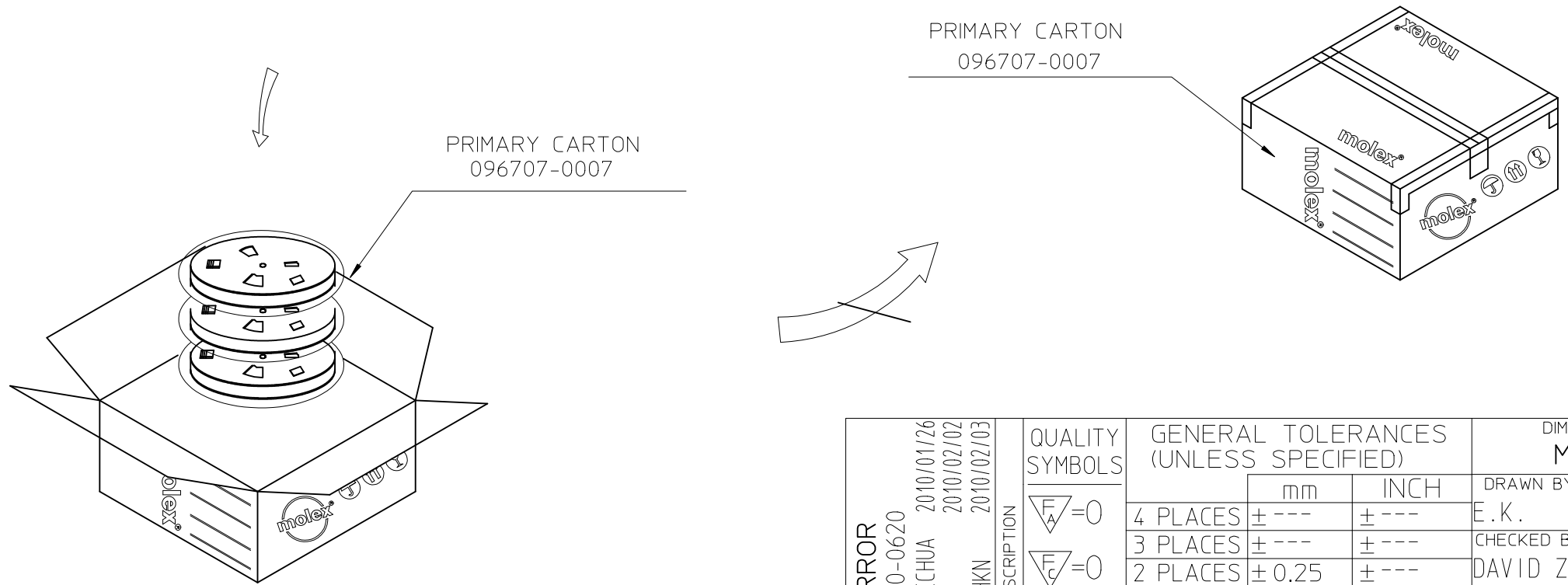
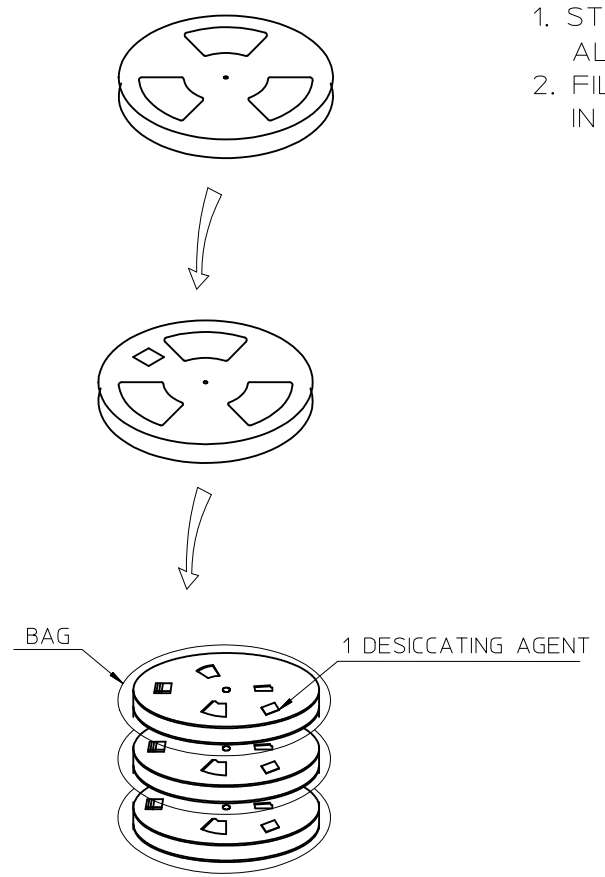
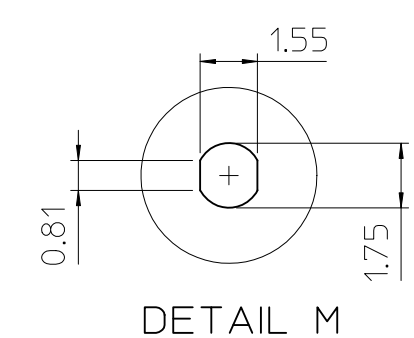
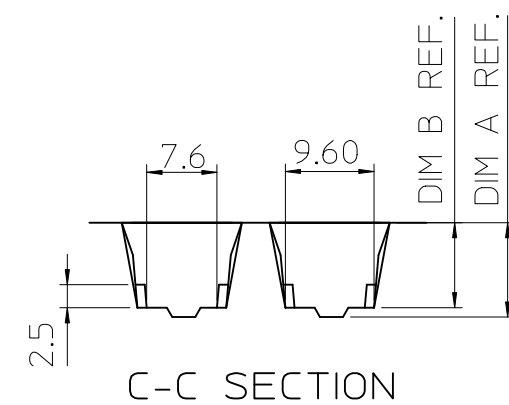
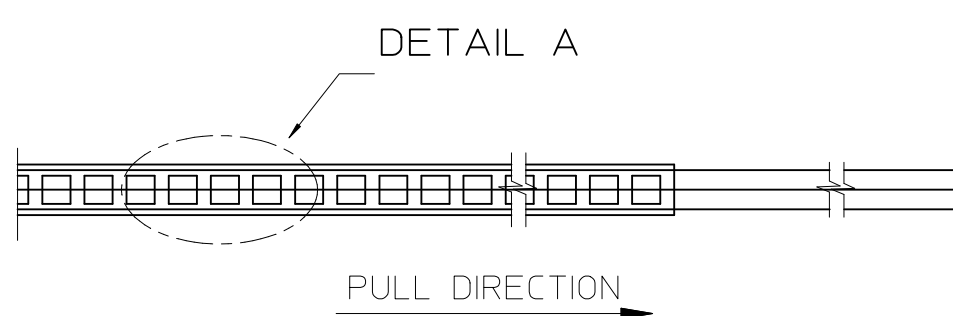
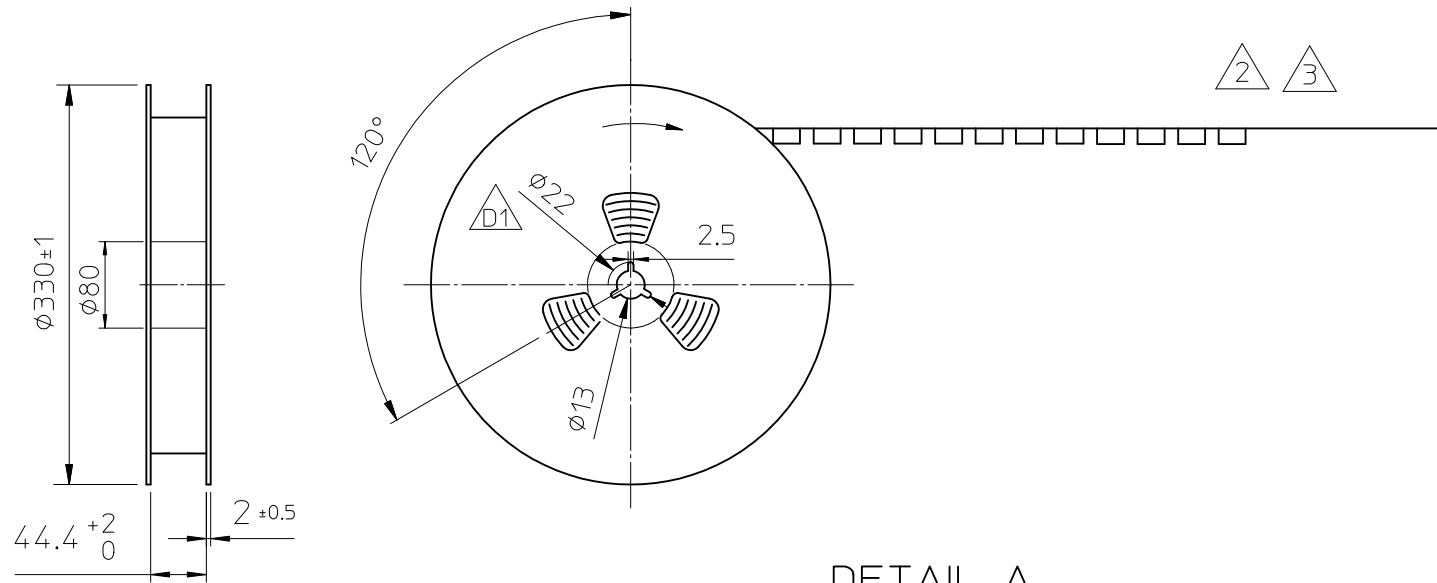


NOTE:  
 1. STAPLES SHOULD ONLY BE USED TO SET UP CARTON  
 ALL CARTONS CLOSURES MUST BE DONE WITH TAPE.  
 2. FILL PACKAGING REEL WITH THE QUANTITIES AS INDICATED  
 IN THE CHART.

PRODUCT P/N	PARTS PER PRIMARY CARTON	PARTS PER REEL (S.P.Q)	TOTAL REELS PER PRIMARY CARTON
48338-X040	2250 (PCS)	750 (PCS)	3
48338-X052	1500 (PCS)	500 (PCS)	3
48338-X056	1500 (PCS)	500 (PCS)	3
48338-X057	1500 (PCS)	500 (PCS)	3
48338-X065	1350 (PCS)	450 (PCS)	3
48338-X068	1350 (PCS)	450 (PCS)	3
48338-X070	1350 (PCS)	450 (PCS)	3
48338-X075	1200 (PCS)	400 (PCS)	3
48338-X080	1050 (PCS)	350 (PCS)	3
48338-X085	1050 (PCS)	350 (PCS)	3
48338-X088	900 (PCS)	300 (PCS)	3
48338-X090	900 (PCS)	300 (PCS)	3
48338-X099	900 (PCS)	300 (PCS)	3

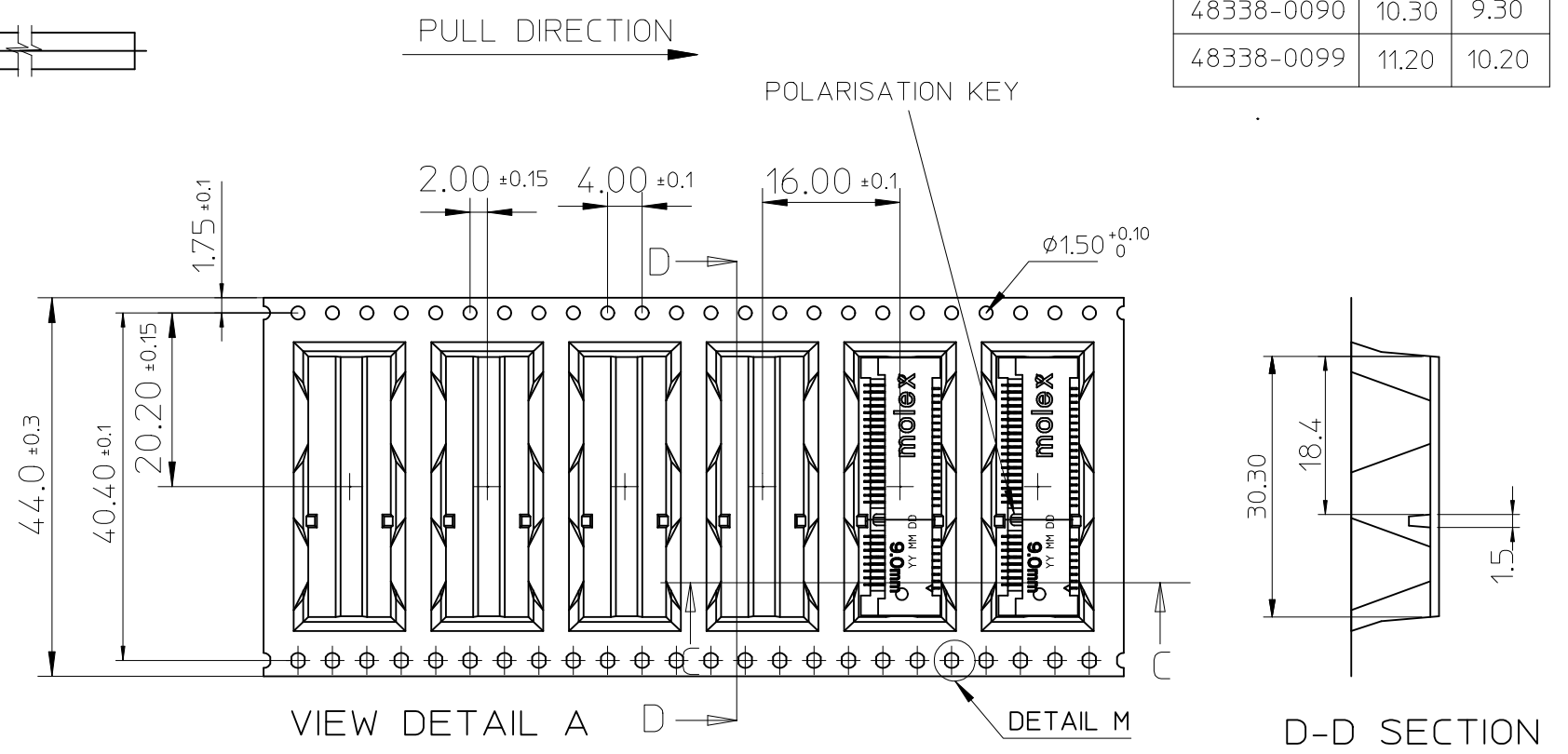
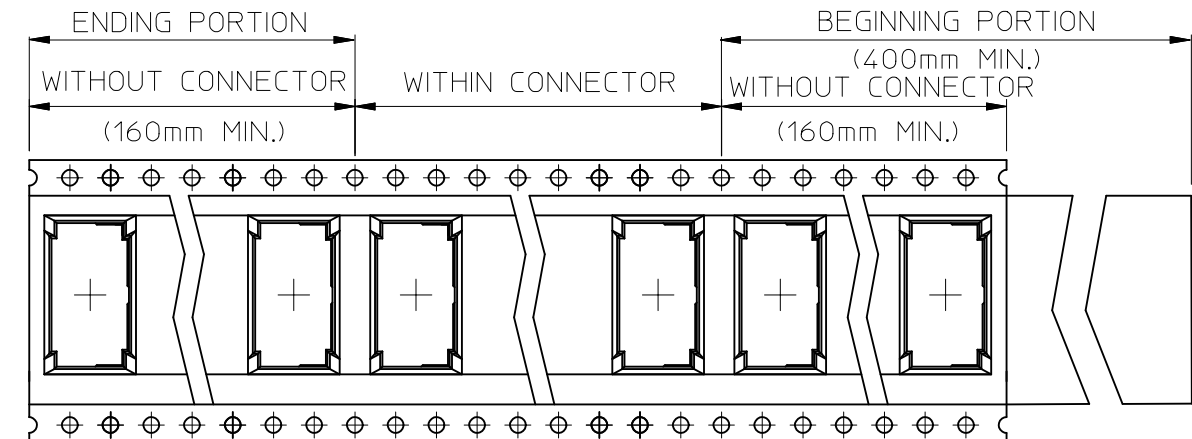


AMEND ERROR EC NO: S2010-0620 DRWN: JESSIECHUA 2010/01/26 CHKD: LNG 2010/02/02 APPR: NAGESHKN 2010/02/03	QUALITY SYMBOLS	GENERAL TOLERANCES (UNLESS SPECIFIED)		DIMENSION STYLE	SCALE	DESIGN UNITS	THIRD ANGLE PROJECTION
	$F_A=0$ $F_E=0$ $F_P=0$	mm	INCH	MM ONLY	NTS	METRIC	
	REV	DESCRIPTION	4 PLACES ± --- ± ---		DRAWN BY	DATE	TITLE
			3 PLACES ± --- ± ---		E.K.	2008/10/21	PACKAGING FOR MINI PCI EXPRESS
		2 PLACES ± 0.25 ± ---		CHECKED BY	DATE		
		1 PLACE ± 0.25 ± ---		DAVID ZHANG	2008/10/28		
		ANGULAR ± 3 °		APPROVED BY	DATE		
				HARVEY WANG	2008/10/28		
				MATERIAL NO.			
				SEE TABLE			
				SIZE			
				A3			
				THIS DRAWING CONTAINS INFORMATION THAT IS PROPRIETARY TO MOLEX INCORPORATED AND SHOULD NOT BE USED WITHOUT WRITTEN PERMISSION			
						MOLEX INCORPORATED	
						PK-48338-002	
							SHEET NO. 1 OF 3

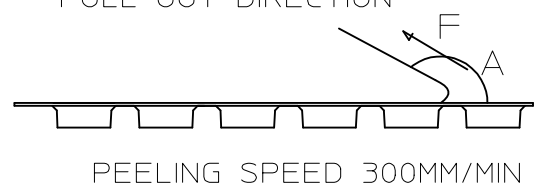


PRODUCT P/N	DIM A	DIM B
48338-0040	5.30	4.30
48338-0052	6.50	5.50
48338-0056	7.05	6.05
48338-0057	7.05	6.05
48338-0065	7.80	6.80
48338-0068	8.10	7.10
48338-0070	8.30	7.30
48338-0075	8.80	7.80
48338-0080	9.30	8.30
48338-0085	9.80	8.80
48338-0088	10.30	9.30
48338-0090	10.30	9.30
48338-0099	11.20	10.20

- NOTE:  
 1. QUANTITY: SEE PAGE 1.  
 2. USER DIRECTION OF FEED



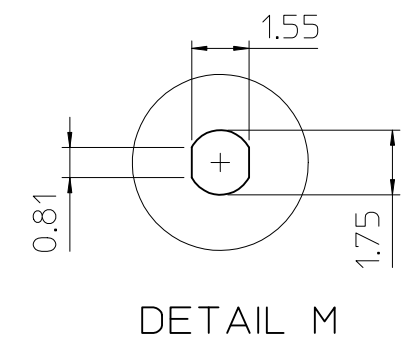
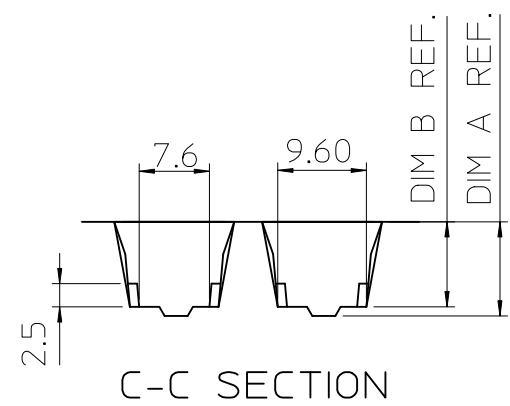
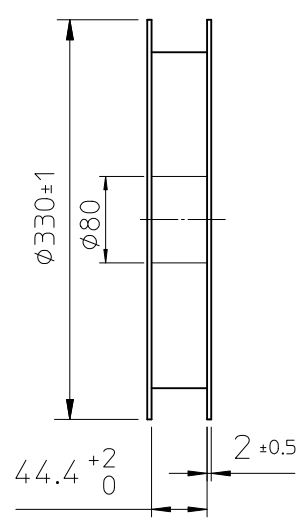
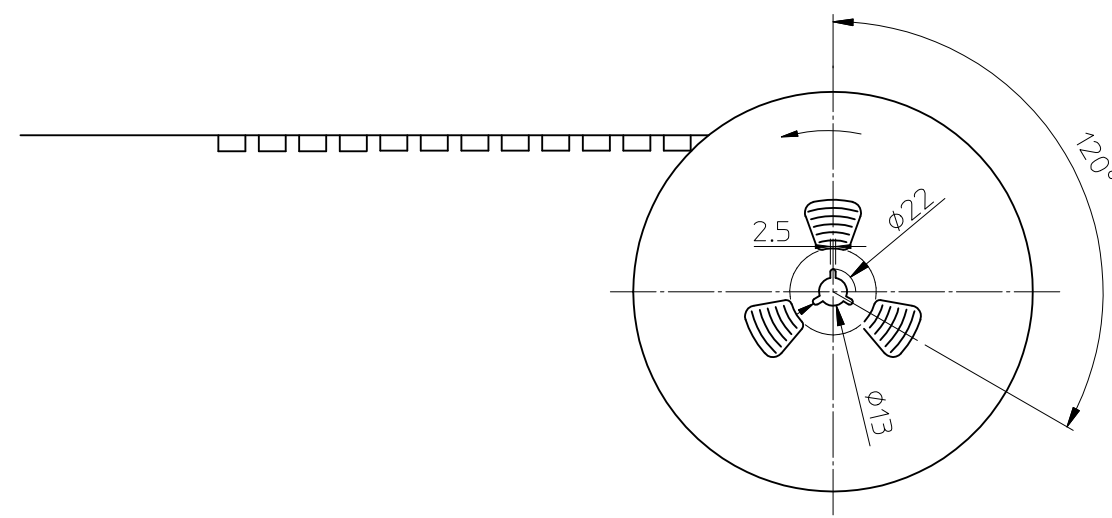
3. COVER TAPE PEELING FORCE:  
 PULL OUT DIRECTION



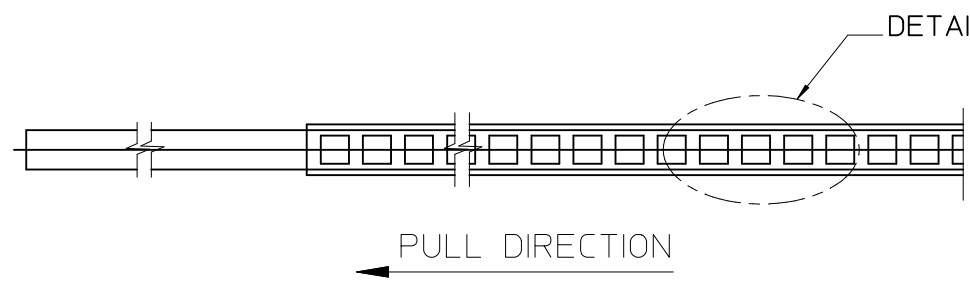
A	165°~ 180°
F	0.1N~1.3N

4. PART DIMENSIONS MEET EIA-481-2-A REQUIREMENT

REV	DESCRIPTION	QUALITY SYMBOLS	GENERAL TOLERANCES (UNLESS SPECIFIED)		DIMENSION STYLE		SCALE	DESIGN UNITS	THIRD ANGLE PROJECTION
			mm	INCH	MM ONLY	NTS			
		$\nabla_A = 0$	4 PLACES	± ---	± ---	DRAWN BY	DATE	TITLE	MOLEX INCORPORATED
		$\nabla_F = 0$	3 PLACES	± ---	± ---	E.K.	2008/10/21		
		$\nabla_P = 0$	2 PLACES	± 0.25	± ---	CHECKED BY	DATE	DOCUMENT NO.	SHEET NO.
			1 PLACE	± 0.25	± ---	DAVID ZHANG	2008/10/28		
			ANGULAR ± 3°			APPROVED BY	DATE	MOLEX INCORPORATED	
			DRAFT WHERE APPLICABLE MUST REMAIN WITHIN DIMENSIONS			HARVEY WANG	2008/10/28	MATERIAL NO. SEE TABLE	
						THIS DRAWING CONTAINS INFORMATION THAT IS PROPRIETARY TO MOLEX INCORPORATED AND SHOULD NOT BE USED WITHOUT WRITTEN PERMISSION			



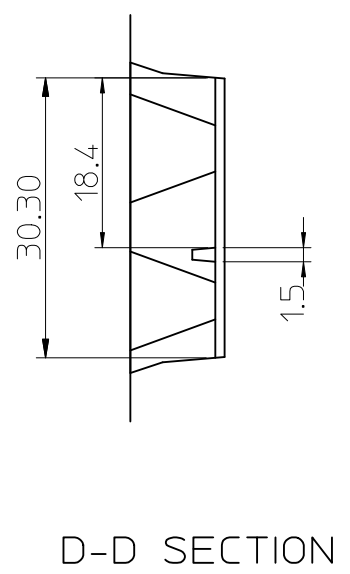
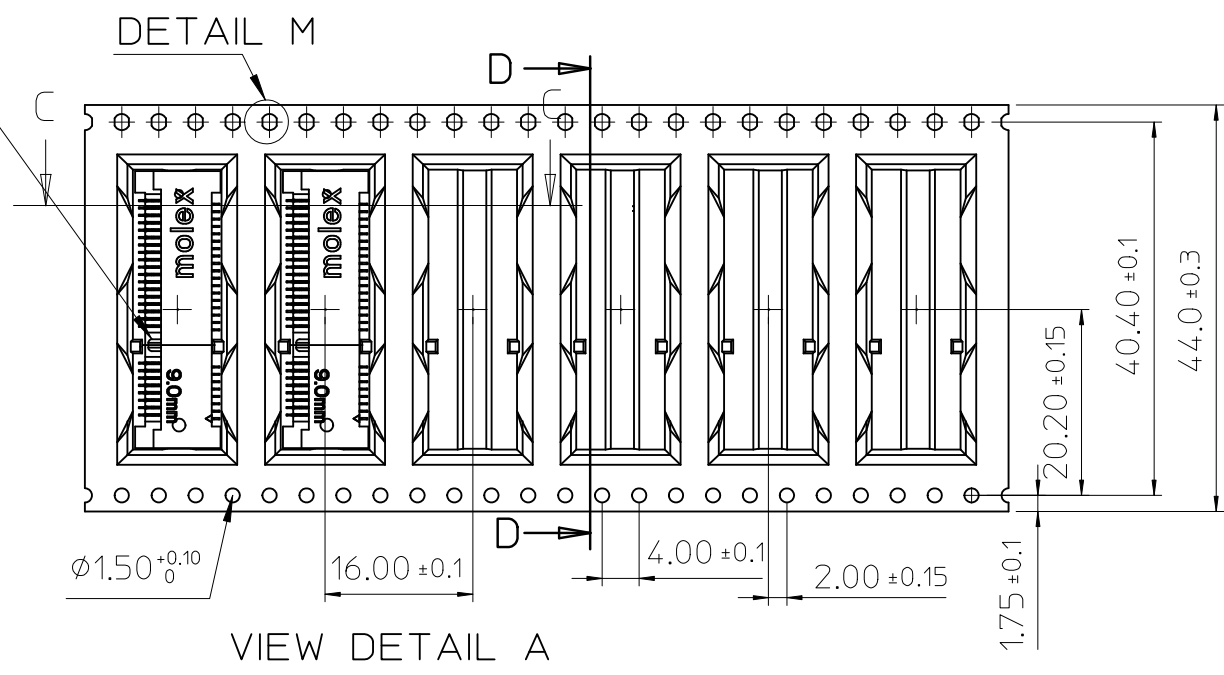
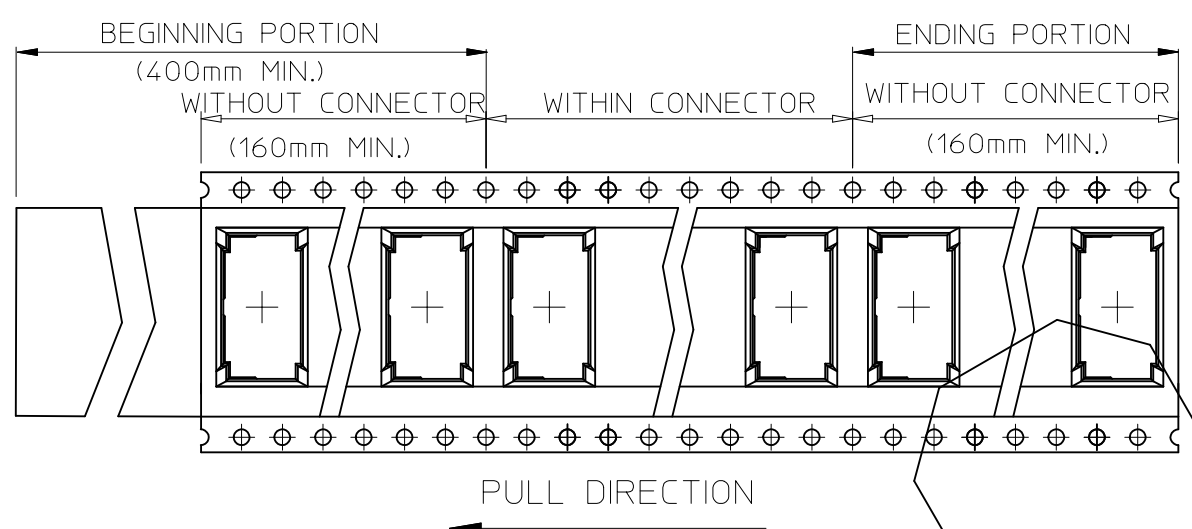
PRODUCT P/N	DIM A	DIM B
48338-1040	5.30	4.30
48338-1052	6.50	5.50
48338-1056	7.05	6.05
48338-1057	7.05	6.05
48338-1065	7.80	6.80
48338-1068	8.10	7.10
48338-1070	8.30	7.30
48338-1075	8.80	7.80
48338-1080	9.30	8.30
48338-1085	9.80	8.80
48338-1088	10.30	9.30
48338-1090	10.30	9.30
48338-1099	11.20	10.20



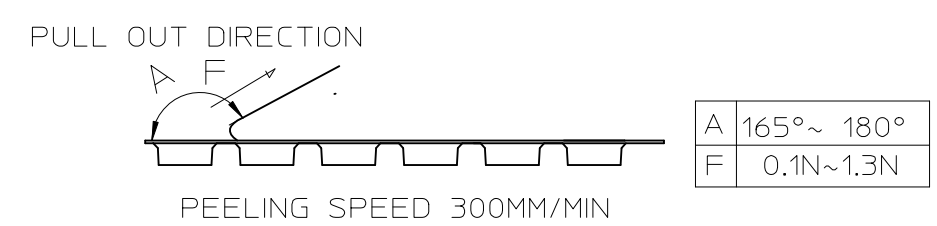
POLARISATION KEY

PULL DIRECTION

NOTE:  
 1. QUANTITY: SEE PAGE 1.  
 2. USER DIRECTION OF FEED



3. COVER TAPE PEELING FORCE:



4. PART DIMENSIONS MEET EIA-481-2-A REQUIREMENT

AMEND ERROR EC NO: S2010-0620 DRWN: JESSIECHUA 2010/01/26 CHKD: LING 2010/02/02 APPR: NAGESHK 2010/02/03	QUALITY SYMBOLS	GENERAL TOLERANCES (UNLESS SPECIFIED)	DIMENSION STYLE	SCALE	DESIGN UNITS	THIRD ANGLE PROJECTION
	$\nabla_A = 0$ $\nabla_E = 0$ $\nabla_P = 0$	mm    INCH 4 PLACES ± --- ± --- 3 PLACES ± --- ± --- 2 PLACES ± 0.25 ± --- 1 PLACE ± 0.25 ± --- ANGULAR ± 3°	MM ONLY	NTS	METRIC	
	REV	DRAFT WHERE APPLICABLE MUST REMAIN WITHIN DIMENSIONS	DRAWN BY DATE E.K. 2008/10/21 CHECKED BY DATE DAVID ZHANG 2008/10/28 APPROVED BY DATE HARVEY WANG 2008/10/28 MATERIAL NO.	TITLE	PACKAGING FOR MINI PCI EXPRESS MOLEX INCORPORATED	
	SIZE A3	THIS DRAWING CONTAINS INFORMATION THAT IS PROPRIETARY TO MOLEX INCORPORATED AND SHOULD NOT BE USED WITHOUT WRITTEN PERMISSION	SEE TABLE	DOCUMENT NO.	PK-48338-002 SHEET NO. 3 OF 3	