



**ANATECH ELECTRONICS INC**  
RF & Microwave Filters & Products

# 1300 MHz Bandpass Filter

Part Number: AE1300B6365



## Electrical Specifications

**Center Frequency:** 1300 MHz  
**Bandwidth:** 100 MHz  
**Impedance:** 50 Ohms  
**Rejection:** 60dB @ 0- 900 MHz  
**Rejection:** 60dB @1650-5000 MHz  
**Insertion loss:** <3dB

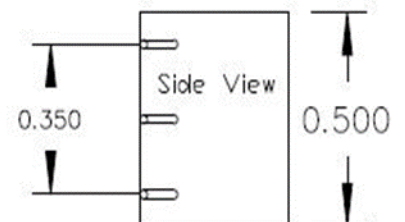
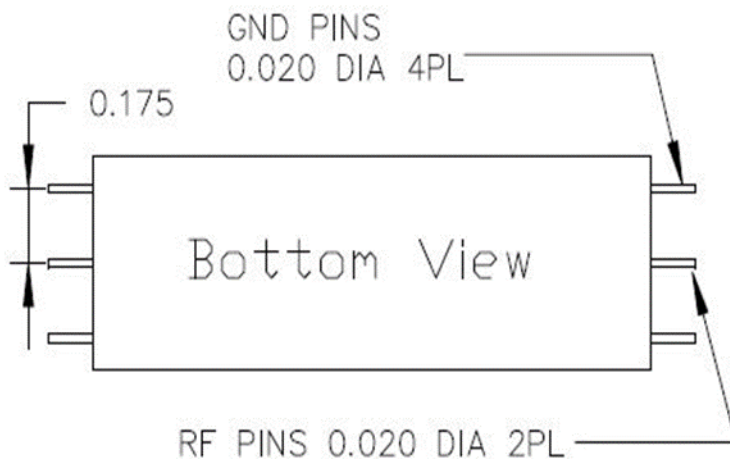
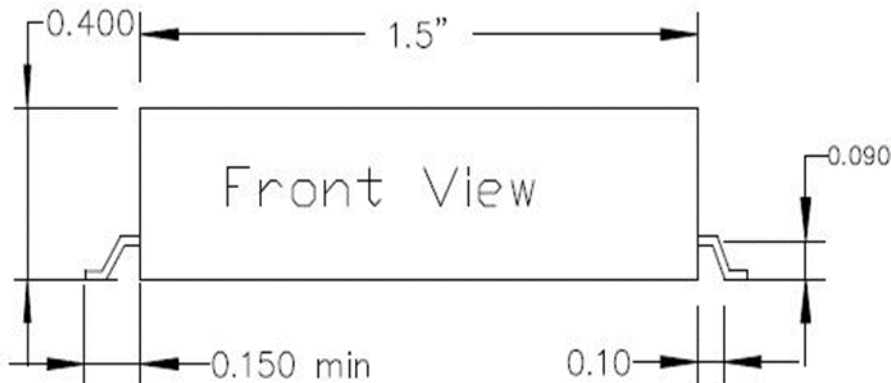
## Mechanical

**Connector Type:** Surface Mount  
**Dimensions:** 1.5" X 0.5" x 0.4" in.

## Environmental

**Operating Temperature:** -25°C to +70°C  
**Storage Temperature:** -40°C to +90°C  
**Shock:** 10 G. 11ms  
**Vibration:** 10 G. 5 to 200Hz

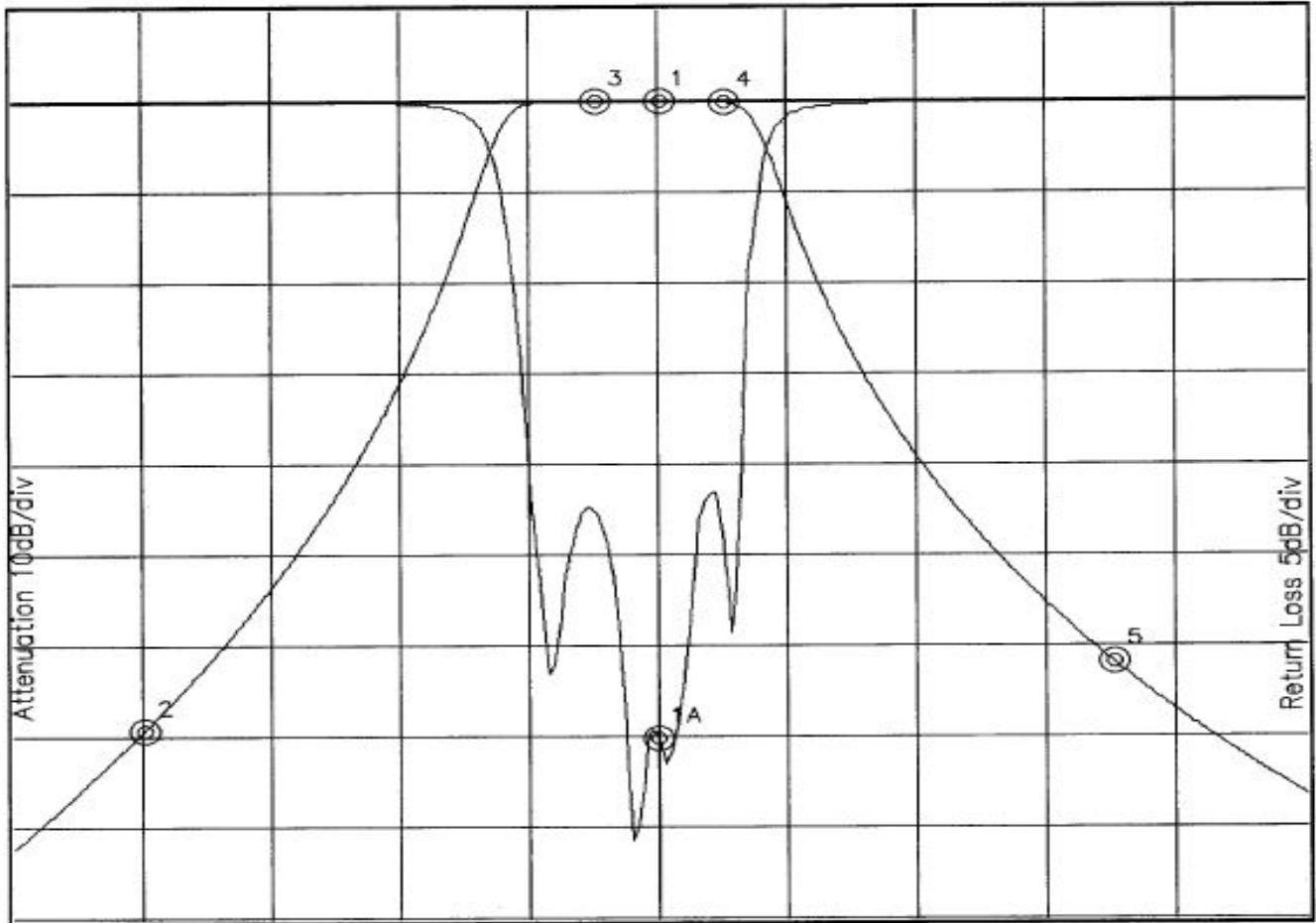
## Outline Drawing:





### Response Plot:

B6365.lad      AUG 9, 2002      Attenuation/Return Loss



Attenuation Start: 800.0MHz    Stop: 1.80GHz      Return Loss Start: 800.0MHz    Stop: 1.80GHz

Offset -0.6521dB

- Marker 1 Freq 1.301GHz Atten -0.044dB
- Marker 2 Freq 900.16MHz Atten -69.737dB
- Marker 3 Freq 1.251GHz Atten -0.073dB
- Marker 4 Freq 1.351GHz Atten -0.296dB
- Marker 5 Freq 1.651GHz Atten -62.222dB

Marker 1A Freq 1.299GHz Ret Loss -35.367dB