

MATERIALS AND FINISHES

BODY/CAP: ZINC ALLOY
PLATED: TIN

CENTER CONTACT: PHOSPHOR BRONZE
OR BRASS
PLATED: GOLD

COLOR RING : HIGH TEMPERATURE
PLASTIC
COLOR: SEE TABLE

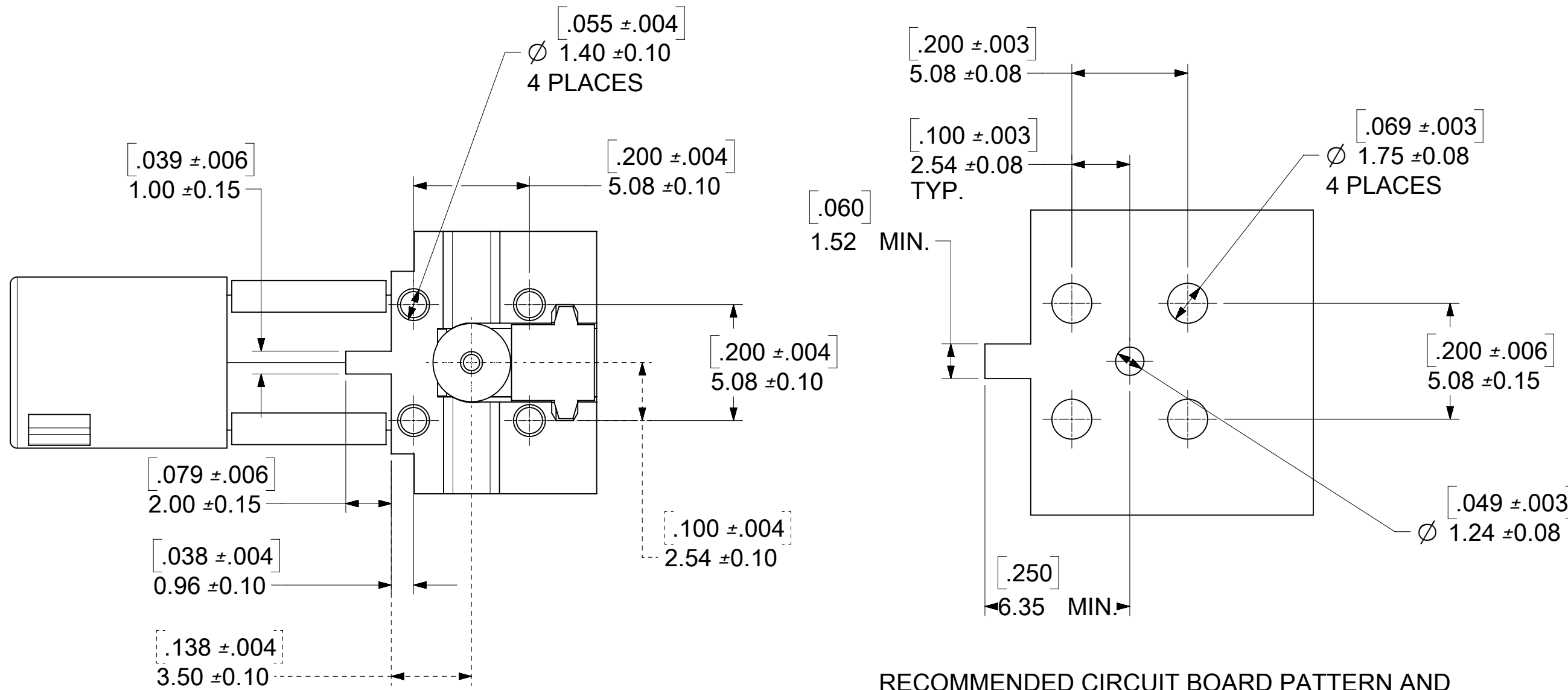
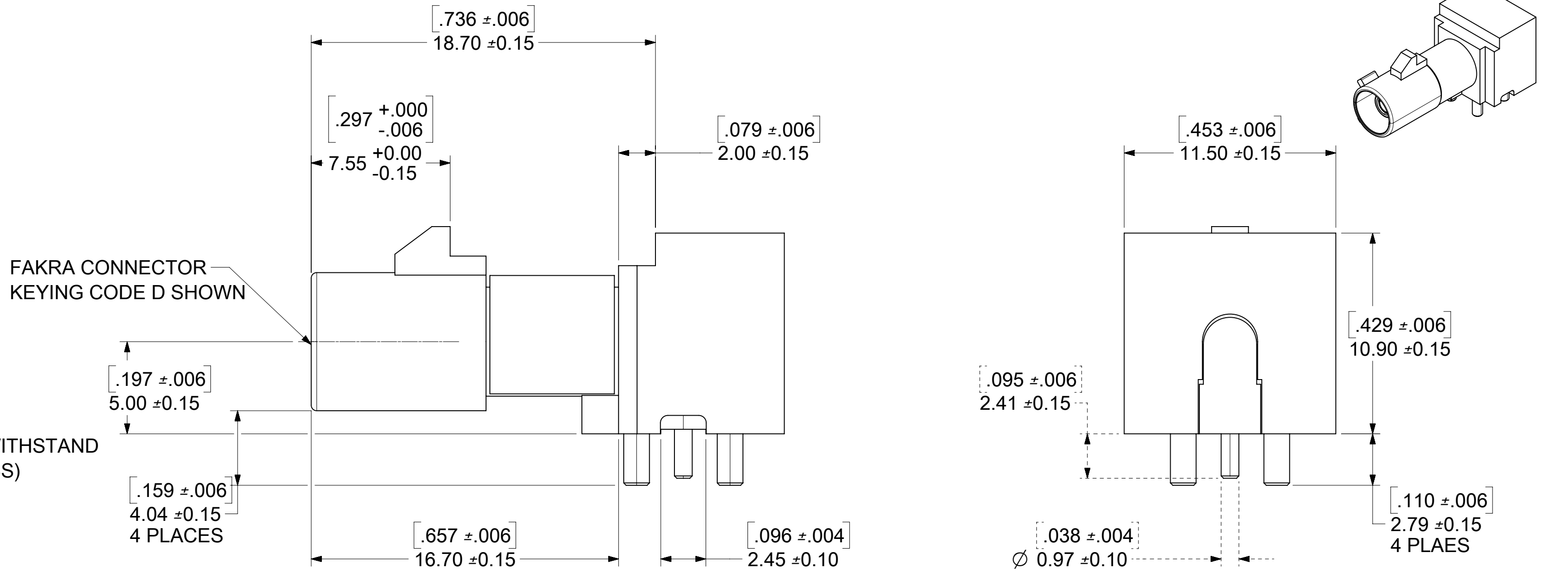
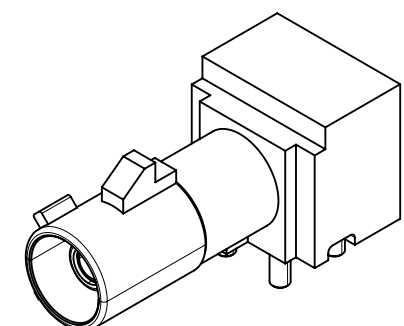
KEYING: SEE TABLE

INSULATOR: TEFLON

RETENTION SPECIFICATION:

THE FAKRA CONNECTOR SHOULD WITHSTAND
A LONGITUDINAL FORCE OF 110 N (24.75 LBS)

SEE SHEETS 3 AND 4 FOR PACKAGING INSTRUCTIONS



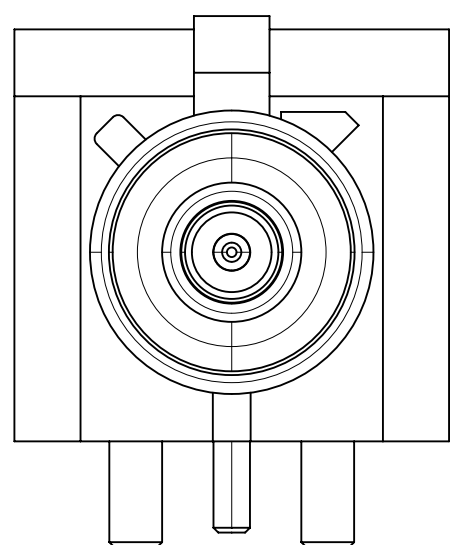
RECOMMENDED CIRCUIT BOARD PATTERN AND
MINIMUM BOARD AREA NEEDED FOR CONNECTOR
ANTI-TIPPING FEATURE TO FUNCTION

| | |
|---------------------------|-----------------------|
| PS-89675-3310 | PRODUCT SPECIFICATION |
| MIL-STD-348-A. FIG. 311-1 | INTERFACE |
| SPECIFICATION | DESCRIPTION |

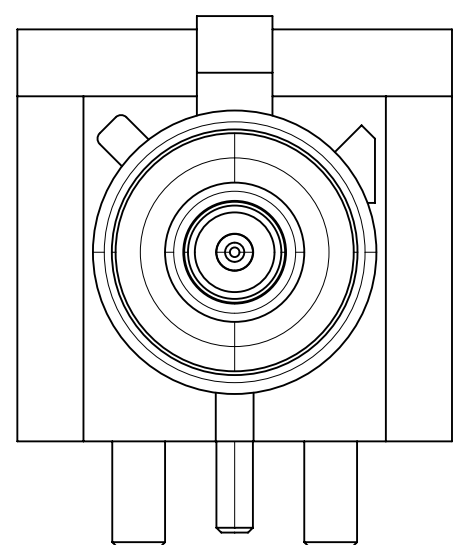
| | | |
|------------|------|-------------------------------------|
| 2018/07/26 | B4 | UPDATE TAPE AND REEL PER EWR #12096 |
| 2010/07/14 | B3 | ADDED .096±.004 |
| DATE | REV. | DESCRIPTION |

| | | | | |
|-----------------|----|--------------|------------|----------|
| DOCUMENT STATUS | P1 | RELEASE DATE | 2018/09/06 | 03:34:10 |
|-----------------|----|--------------|------------|----------|

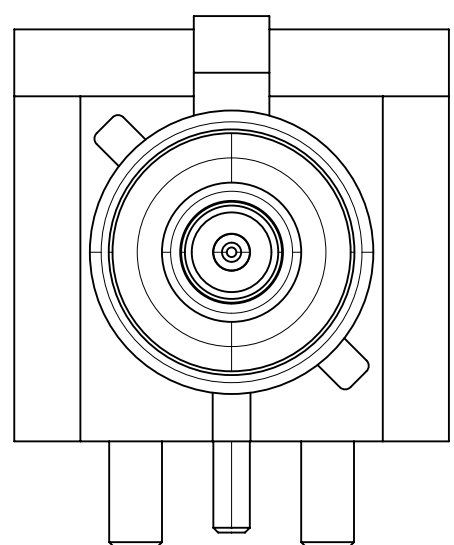
| | | | | | | | | | | |
|--|--|---|--|--------------|--|----------|--|--|--|--|
| SYMBOLS ▽ = 0 ▽ = 0 ▽ = 0 ▽ = 0 ▽ = 0 ▽ = 0 ▽ = 0 ▽ = 0 ▽ = 0 | | THIS DRAWING CONTAINS INFORMATION THAT IS PROPRIETARY TO MOLEX ELECTRONIC TECHNOLOGIES, LLC AND SHOULD NOT BE USED WITHOUT WRITTEN PERMISSION DIMENSION UNITS: HYBRID SCALE: NTS GENERAL TOLERANCES (UNLESS SPECIFIED) ANGULAR TOL ± 2.0° 4 PLACES ± 3 PLACES ± 2 PLACES ± 1 PLACE ± 0 PLACES ± DRAFT WHERE APPLICABLE MUST REMAIN WITHIN DIMENSIONS | | | CURRENT REV DESC: EC NO: 603096 DRWN: ELIN 2018/07/25 CHK'D: YCHENG 2018/09/06 APPR: YCHENG 2018/09/06 INITIAL REVISION: DRWN: JMASTRIANO 2005/08/30 APPR: JWIENER 2005/08/30 | | | | | |
| | | | FAKRA JACK, R/A ,PCB 50 OHMS TAPE&REEL, FAKRA-J/PCB | | | | | | | |
| | | | PRODUCT CUSTOMER DRAWING | | | | | | | |
| DOCUMENT NUMBER | | DOC TYPE | | DOC PART | | REVISION | | | | |
| SD-73404-116 | | PSD | | 001 | | B4 | | | | |
| MATERIAL NUMBER | | CUSTOMER | | SHEET NUMBER | | | | | | |
| SEE TABLE | | GENERAL MARKET | | 1 OF 4 | | | | | | |



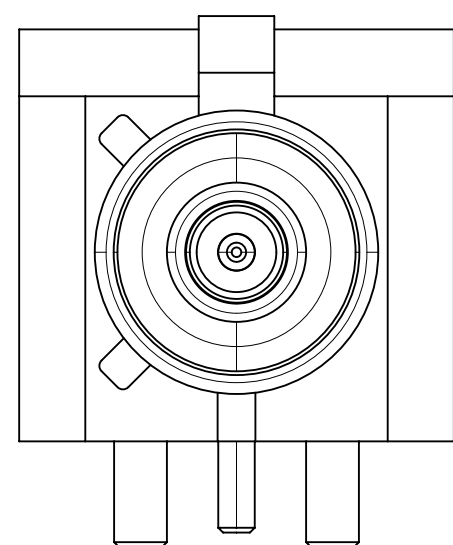
CODE A



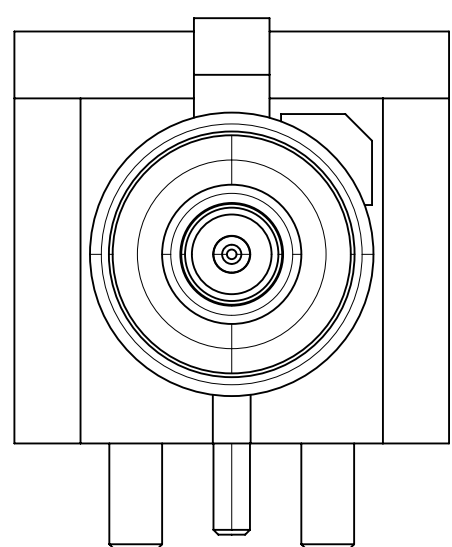
CODE B



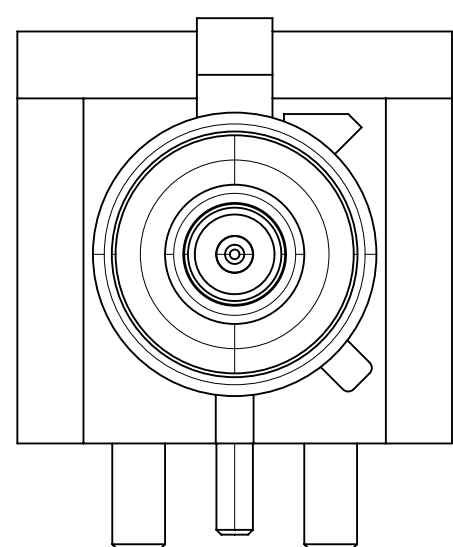
CODE C



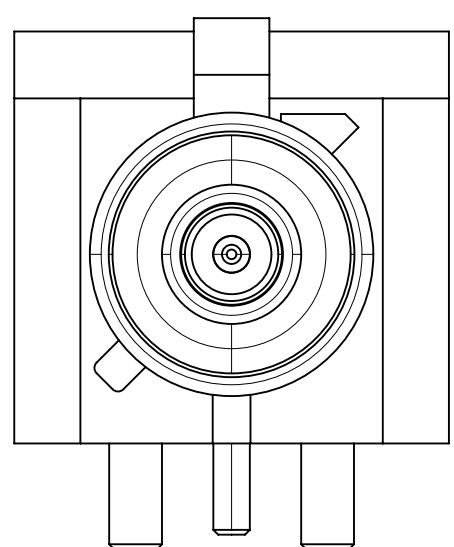
CODE D



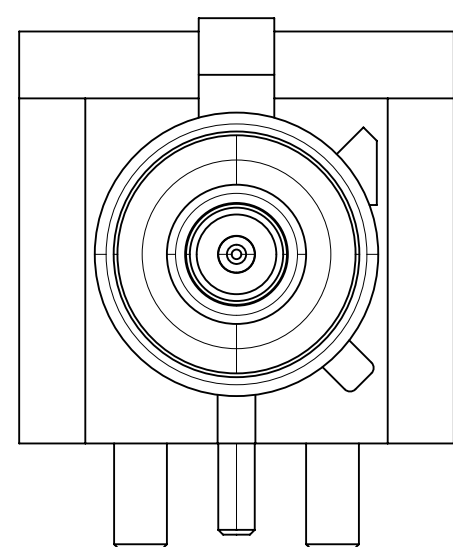
CODE E



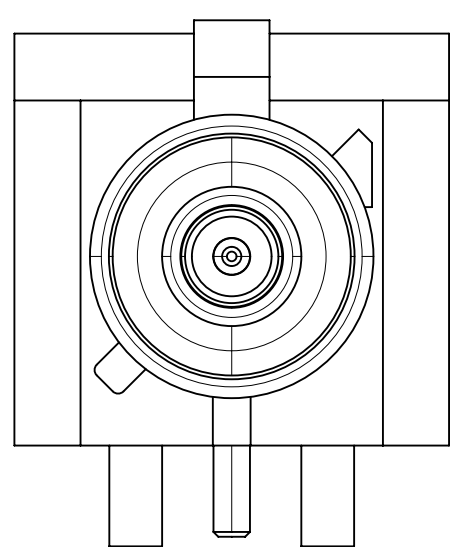
CODE F



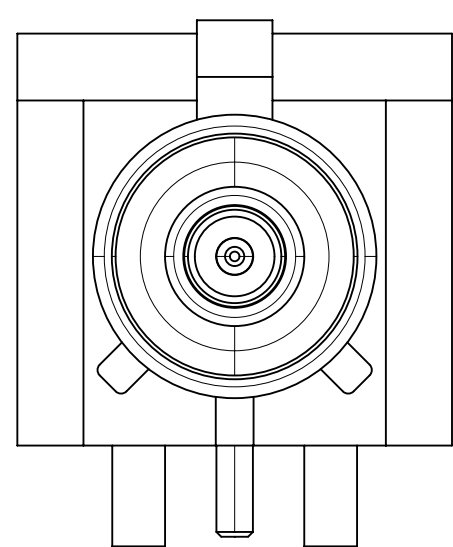
CODE G



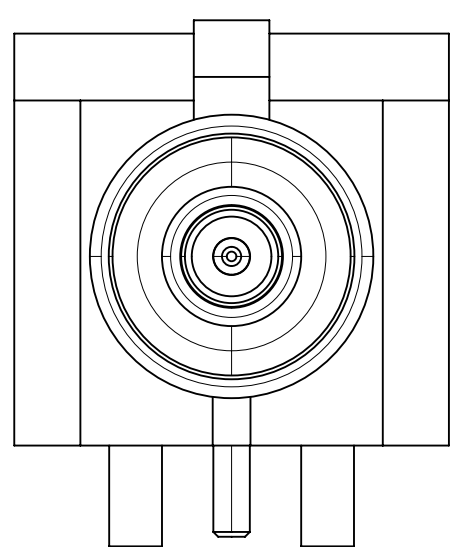
CODE H



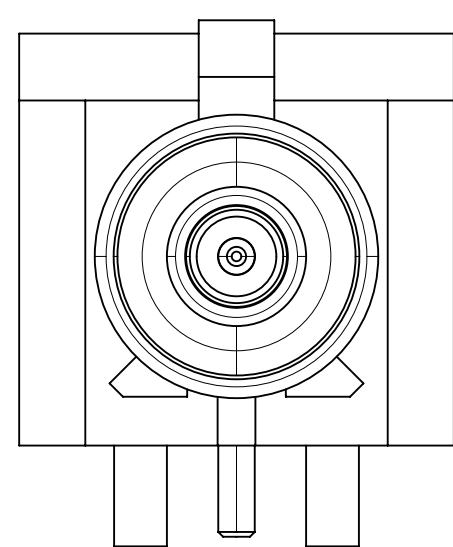
CODE I



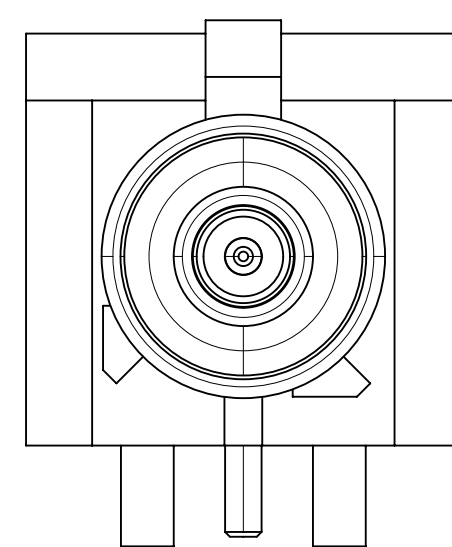
CODE K



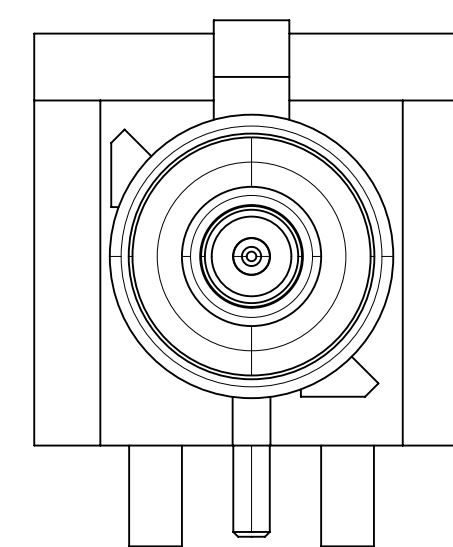
CODE Z



CODE L



CODE M



CODE N

| | | |
|-------------|----------------|------------|
| N | PASTEL GREEN | 73404-1173 |
| M | PASTEL ORANGE | 73404-1172 |
| L | CARMINE RED | 73404-1171 |
| Z | WATER BLUE | 73404-1170 |
| K | CURRY YELLOW | 73404-1169 |
| I | BEIGN | 73404-1168 |
| H | VIOLET | 73404-1167 |
| G | GRAY | 73404-1166 |
| F | BROWN | 73404-1165 |
| E | GREEN | 73404-1164 |
| D | BORDEAUXVILOET | 73404-1163 |
| C | BLUE | 73404-1162 |
| B | SINGLE WHITE | 73404-1161 |
| A | BLACK | 73404-1160 |
| KEYING CODE | COLOR | PART NO. |

| | | | | | | | | | |
|---|--|-----------------|------------------------|-------|------------|-------------------|------------|--|--|
| THIS DRAWING CONTAINS INFORMATION THAT IS PROPRIETARY TO MOLEX ELECTRONIC TECHNOLOGIES, LLC AND SHOULD NOT BE USED WITHOUT WRITTEN PERMISSION | | | | | | | | | |
| SYMBOLS | | DIMENSION UNITS | | SCALE | | CURRENT REV DESC: | | | |
| ▽ = 0 | HYBRID | NTS | | | | | | | |
| ▽ = 0 | GENERAL TOLERANCES (UNLESS SPECIFIED) | | | | | | | | |
| ▽ = 0 | ANGULAR TOL ± 2.0° | | | | | | | | |
| ▽ = 0 | 4 PLACES | ± | EC NO: 603096 | | | | | | |
| ▽ = 0 | 3 PLACES | ± | DRWN: ELIN | | | | 2018/07/25 | | |
| ▽ = 0 | 2 PLACES | ± | CHK'D: YCHENG | | | | 2018/09/06 | | |
| ▽ = 0 | 1 PLACE | ± | APPR: YCHENG | | | | 2018/09/06 | | |
| ▽ = 0 | 0 PLACES | ± | INITIAL REVISION: | | | | | | |
| ☒ = 0 | DRAFT WHERE APPLICABLE MUST REMAIN WITHIN DIMENSIONS | | THIRD ANGLE PROJECTION | | DRAWING | | SERIES | | |
| ▽ = 0 | | | C-SIZE | | 73404 | | | | |
| DOCUMENT STATUS | | P1 | RELEASE DATE | | 2018/09/06 | 03:34:10 | | | |

molex

FAKRA JACK, R/A ,PCB
50 OHMS TAPE&REEL, FAKRA-J/PCB

PRODUCT CUSTOMER DRAWING

| | | | |
|-----------------|----------|----------|----------|
| DOCUMENT NUMBER | DOC TYPE | DOC PART | REVISION |
| SD-73404-116 | PSD | 001 | B4 |

| | | |
|-----------------|----------------|--------------|
| MATERIAL NUMBER | CUSTOMER | SHEET NUMBER |
| SEE TABLE | GENERAL MARKET | 2 OF 4 |

FEED DIRECTION →

$.157 \pm .004$
 4.00 ± 0.10
 10 PITCHS CUMULATIVE TOLERANCE ON TAPE $\pm .20$ (.008)

$.079 \pm .006$
 2.00 ± 0.15

$.059 \pm .004$
 $\varnothing 1.50 \pm 0.10$

$.069 \pm .004$
 1.75 ± 0.10

$.582 \pm .006$
 14.78 ± 0.15

$1.141 \pm .008$
 28.97 ± 0.20

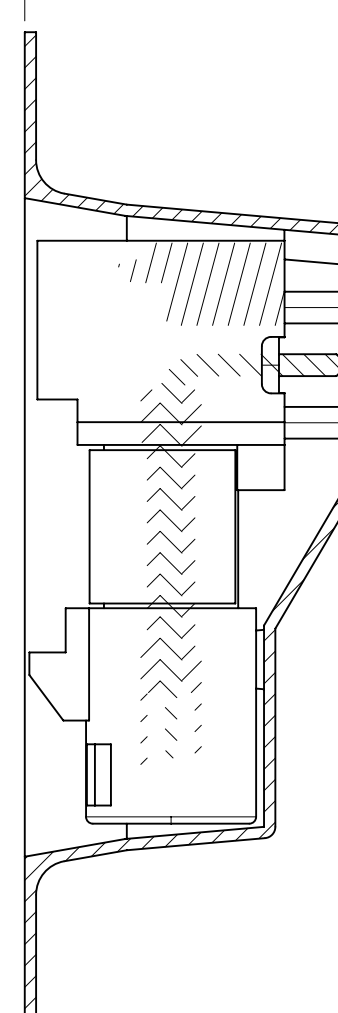
1.663
 42.25 MIN.

1.744
 44.30 MAX.

$.715 \pm .008$
 18.16 ± 0.20

$1.102 \pm .006$
 28.00 ± 0.15

← REEL

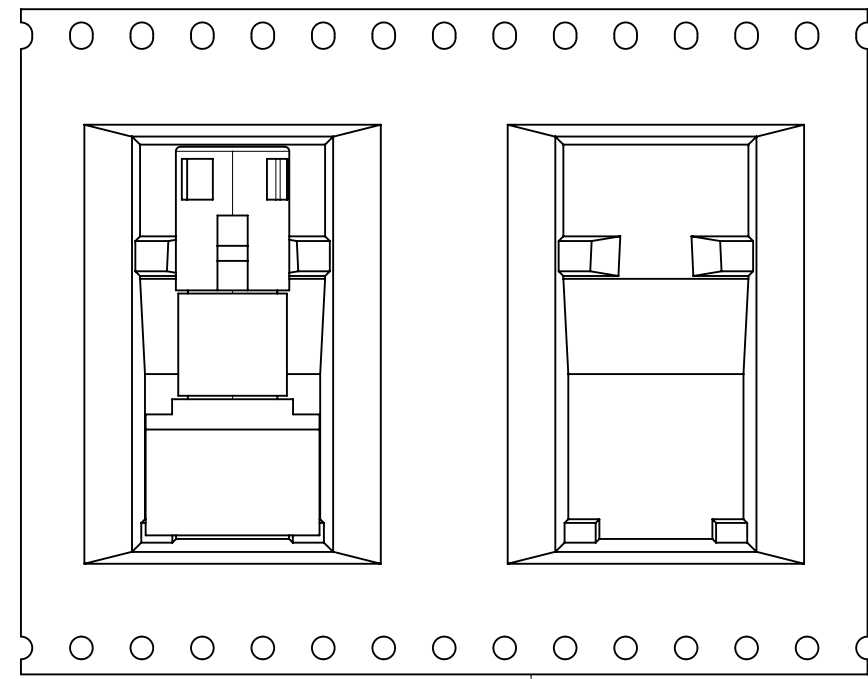


SECTION A-A

NOTES:
 1. 160 CONNECTORS PER REEL ON 330.2 mm (13.0 IN)
 REEL

| THIS DRAWING CONTAINS INFORMATION THAT IS PROPRIETARY TO MOLEX ELECTRONIC TECHNOLOGIES, LLC AND SHOULD NOT BE USED WITHOUT WRITTEN PERMISSION | | | | | | | | | |
|---|--|-------|---|---------|--------|--------------|--|--|--|
| SYMBOLS | DIMENSION UNITS | SCALE | CURRENT REV DESC: | | | | | | |
| $\nabla = 0$ | HYBRID | NTS | EC NO: 603096 DRWN: ELIN 2018/07/25 CHK'D: YCHENG 2018/09/06 APPR: YCHENG 2018/09/06 INITIAL REVISION: DRWN: JMASTRIANO 2005/08/30 APPR: JWIENER 2005/08/30 | | | | | | |
| $\nabla = 0$ | GENERAL TOLERANCES (UNLESS SPECIFIED) | | | | | | | | |
| $\nabla = 0$ | ANGULAR TOL $\pm 2.0^\circ$ | | | | | | | | |
| $\nabla = 0$ | 4 PLACES | \pm | | | | | | | |
| $\nabla = 0$ | 3 PLACES | \pm | PRODUCT CUSTOMER DRAWING DOCUMENT NUMBER: SD-73404-116 DOC TYPE: PSD DOC PART: 001 REVISION: B4 | | | | | | |
| $\nabla = 0$ | 2 PLACES | \pm | | | | | | | |
| $\nabla = 0$ | 1 PLACE | \pm | MATERIAL NUMBER: SEE TABLE CUSTOMER: GENERAL MARKET SHEET NUMBER: 3 OF 4 | | | | | | |
| $\nabla = 0$ | 0 PLACES | \pm | | | | | | | |
| $\square = 0$ | DRAFT WHERE APPLICABLE MUST REMAIN WITHIN DIMENSIONS | | THIRD ANGLE PROJECTION | DRAWING | SERIES | C-SIZE 73404 | | | |
| $\nabla = 0$ | | | | | 73404 | | | | |

| | | | | |
|-----------------|----|--------------|------------|----------|
| DOCUMENT STATUS | P1 | RELEASE DATE | 2018/09/06 | 03:34:10 |
|-----------------|----|--------------|------------|----------|



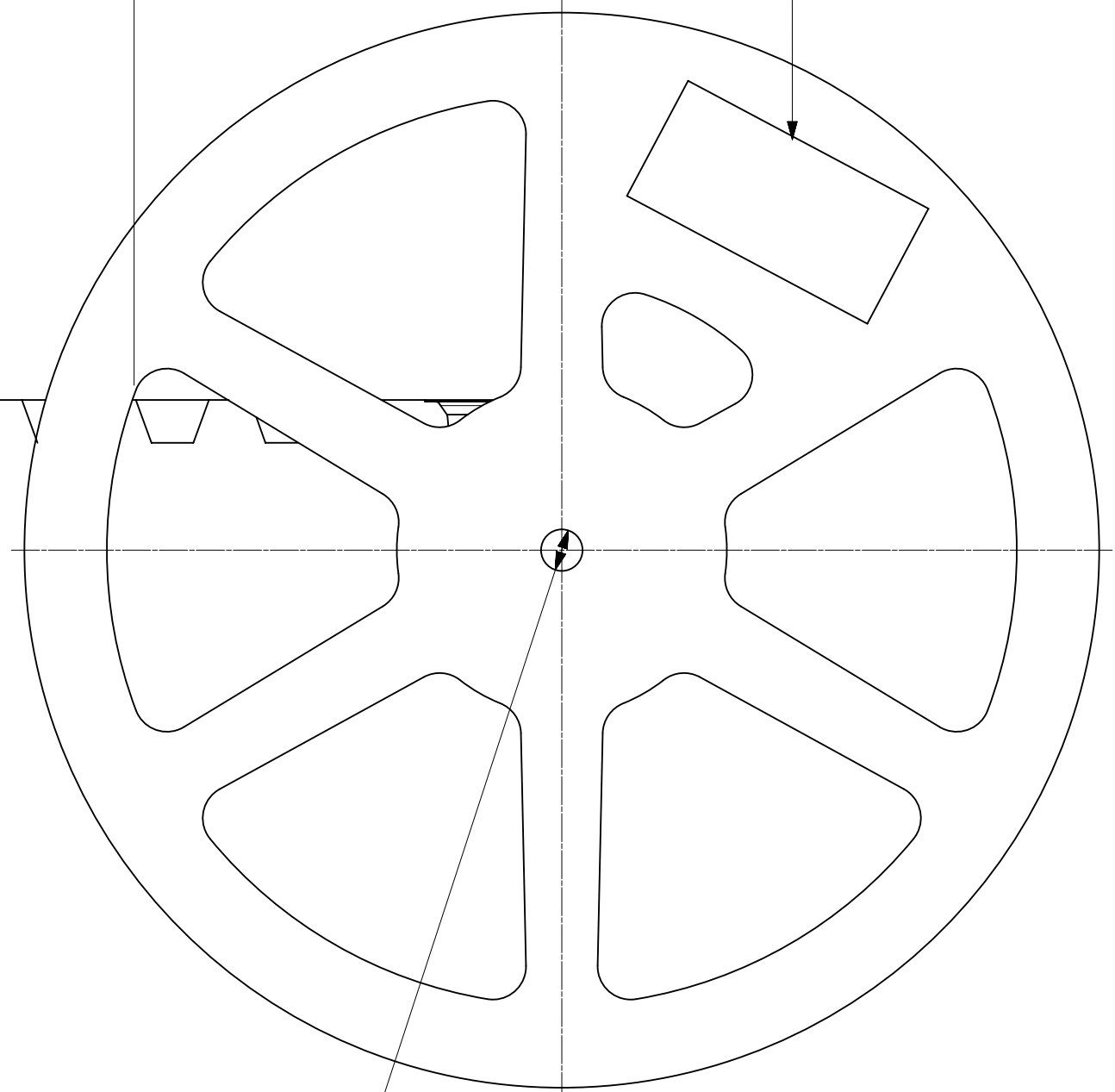
TOP VIEW

[12.992]
330.00 MIN.

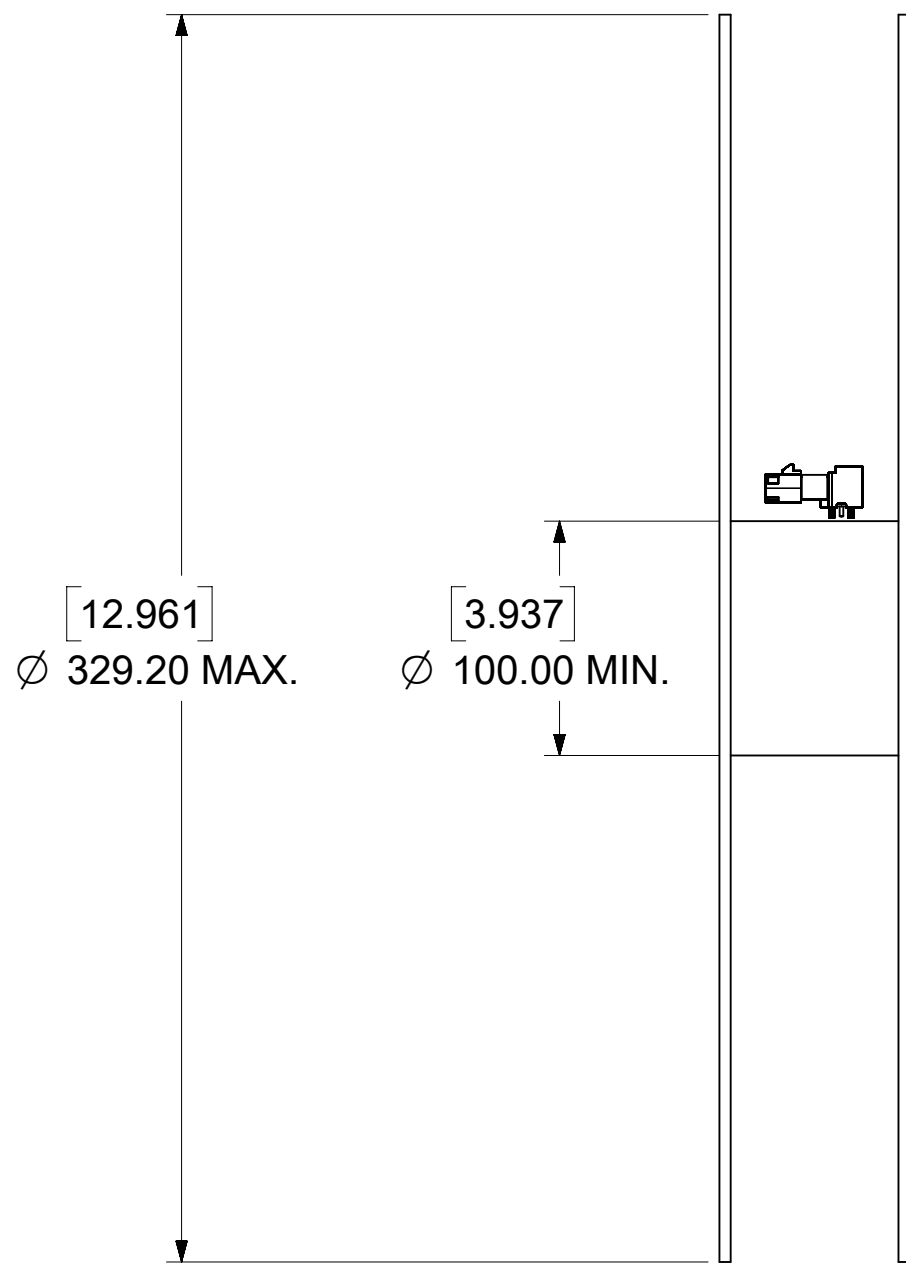
[5.906]
150.00 MIN.
CARRIER TAPE
SEALED WITH
COVER TAPE

LABEL:
- ORDER NO.
- QUANTITY
- PART NO.
- LOT NO.

250mm MIN OF CARRIER AND /OR COVER TAPE.
PLUS 80mm MINIMUM OF CARRIER TAPE SEALED
WITH COVER TAPE



[.531 ± .039]
Ø 13.50 ± 1.00



[12.961]
Ø 329.20 MAX.

[3.937]
Ø 100.00 MIN.

[1.748 ± .079]
44.40 ± 2.00

[2.008]
51.00 MAX.

| | | | | | | | | | | | |
|---|--|-----------------|------------------------|--------------|---------|-------------------|--------------|------------|-----------------|--|--|
| THIS DRAWING CONTAINS INFORMATION THAT IS PROPRIETARY TO MOLEX ELECTRONIC TECHNOLOGIES, LLC AND SHOULD NOT BE USED WITHOUT WRITTEN PERMISSION | | | | | | | | | | | |
| SYMBOLS | | DIMENSION UNITS | | SCALE | | CURRENT REV DESC: | | | | | |
| ▽ = 0 | HYBRID | NTS | | | | | | | | | |
| ▽ = 0 | GENERAL TOLERANCES (UNLESS SPECIFIED) | | | | | | | | | | |
| ▽ = 0 | ANGULAR TOL ± 2.0° | | | | | | | | | | |
| ▽ = 0 | 4 PLACES | ± | | | | EC NO: 603096 | | | | | |
| ▽ = 0 | 3 PLACES | ± | | | | DRWN: ELIN | | 2018/07/25 | | | |
| ▽ = 0 | 2 PLACES | ± | | | | CHK'D: YCHENG | | 2018/09/06 | | | |
| ▽ = 0 | 1 PLACE | ± | | | | APPR: YCHENG | | 2018/09/06 | | | |
| ▽ = 0 | 0 PLACES | ± | | | | INITIAL REVISION: | | | | | |
| ▽ = 0 | DRAFT WHERE APPLICABLE MUST REMAIN WITHIN DIMENSIONS | | THIRD ANGLE PROJECTION | | DRAWING | | SERIES | | MATERIAL NUMBER | | |
| ▽ = 0 | | | C-SIZE | | 73404 | | SD-73404-116 | | SEE TABLE | | |
| | | CUSTOMER | | SHEET NUMBER | | | | | | | |
| | | GENERAL MARKET | | 4 OF 4 | | | | | | | |

molex

FAKRA JACK, R/A ,PCB
50 OHMS TAPE&REEL, FAKRA-J/PCB

PRODUCT CUSTOMER DRAWING

DOCUMENT NUMBER
SD-73404-116

DOC TYPE
PSD

DOC PART
001

REVISION
B4