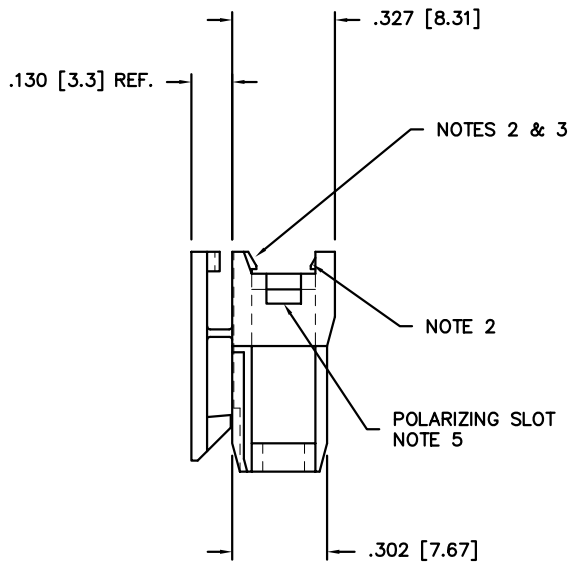
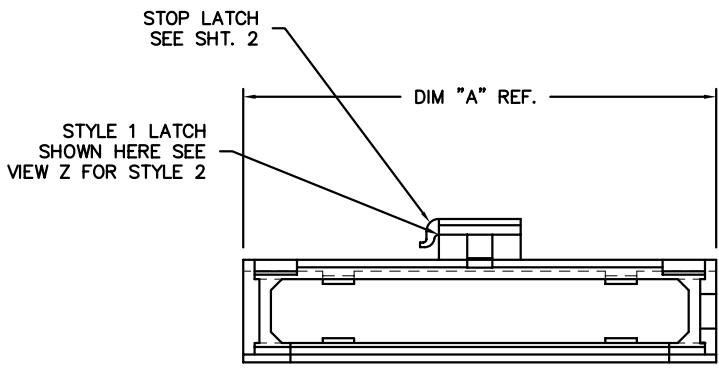
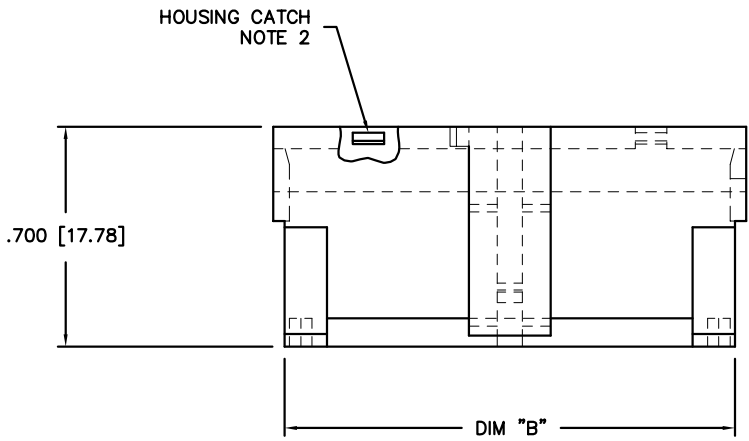


PRODUCT NUMBER  
SEE TABLE



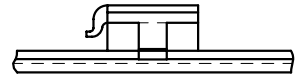
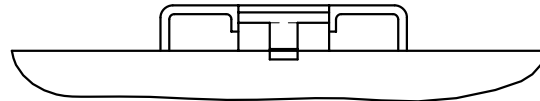
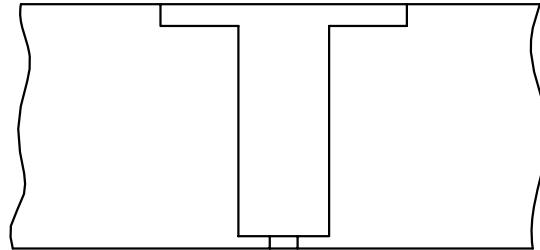
- NOTES:
1. MATERIAL: MODIFIED POLYPHENYLENE ETHER, FLAME RETARDANT PER UL-94V-0, COLOR: BLACK.
  2. 69149-001 TO -026 WILL HAVE FOUR HOUSING CATCHES, TWO ON FRONT & TWO ON REAR OF SHROUD, AS SHOWN. 69149-034LF AND 69149-035LF WILL HAVE TWO HOUSING CATCHES, ONE ON FRONT AND ONE ON REAR OF SHROUD, AS SHOWN.
  3. 69149-030 TO -033 WILL HAVE ONLY ONE HOUSING CATCH, CENTERED ON FRONT SIDE OF SHROUD. P/N 69149-027 WILL HAVE TWO HOUSING CATCHES CENTERED ON FRONT AND BACK OF SHROUD.
  4. ADD AN LF SUFFIX TO PART NUMBERS FOR PRODUCT THAT MEETS EUROPEAN UNION DIRECTIVES AND OTHER COUNTRY REGULATIONS AS DESCRIBED IN GS-22-008.
  5. THIS PRODUCT IS NOT INTENDED TO BE EXPOSED TO MANUFACTURING SOLDER PROCESSES.
  6. STANDARD TOLERANCES:  
.XX±.01/.X±.3  
.XXX±.005/.XX±.13  
.XXXX±.0020/.XXX±.051



Copyright FCI

mat'l. code SEE NOTE 1		surface ✓		tolerance tolerances unless otherwise specified		projection INCH/MM		product family PV HOUSINGS	
ltr	ec'n no	dr	date	angles	linear	SEE NOTE 6		title MINI LATCH SHROUD	
B	v31287	PDP	7/28/93					INCH/MM	
C	v91202	RGD	7/13/99					scale 1:1	
D	v03-1360	PJ	2/13/04	0°±2'					
E	v04-0779	HTB	7/28/04	dr	M. CLOUSER	1/31/91	FCI		dwg no 69149
F	v05-0716	TAB	7/29/05	enrg	C. TREXLER	1/30/91			sheet 1 of 2 A3
G	v06-0515	HTB	6/2/06	chr	C. TREXLER	1/30/91			type Product Customer Drawing
H	v07-0097	HTB	2007-02-01	appd	C. TREXLER	1/30/91			
sheet	revision	H	H						
index	sheet	1	2						

PRODUCT NUMBER NOTE 4	DIM A	DIM B	HOUSING POS. REF.	LATCH STYLE
69149-001		U N A V A I L A B L E		
69149-002		U N A V A I L A B L E		
69149-003		U N A V A I L A B L E		
69149-004		U N A V A I L A B L E		
69149-005		U N A V A I L A B L E		
69149-006		U N A V A I L A B L E		
69149-007		U N A V A I L A B L E		
69149-008		U N A V A I L A B L E		
69149-009		U N A V A I L A B L E		
69149-010		U N A V A I L A B L E		
69149-011		U N A V A I L A B L E		
<b>69149-012</b>	<b>2.606/66.19</b>	<b>2.519/63.98</b>	<b>2 X 25</b>	<b>2</b>
69149-013		U N A V A I L A B L E		
69149-014		U N A V A I L A B L E		
<b>69149-015</b>	<b>2.306/58.57</b>	<b>2.219/56.36</b>	<b>2 X 22</b>	<b>2</b>
69149-016		U N A V A I L A B L E		
69149-017		U N A V A I L A B L E		
69149-018		U N A V A I L A B L E		
69149-019		U N A V A I L A B L E		
<b>69149-020</b>	<b>1.806/45.87</b>	<b>1.719/43.66</b>	<b>2 X 17</b>	<b>2</b>
69149-021		U N A V A I L A B L E		
69149-022		U N A V A I L A B L E		
<b>69149-023</b>	<b>1.506/38.25</b>	<b>1.419/36.04</b>	<b>2 X 14</b>	<b>2</b>
<b>69149-024</b>	<b>1.406/35.71</b>	<b>1.319/33.50</b>	<b>2 X 13</b>	<b>2</b>
69149-025		U N A V A I L A B L E		
69149-026		U N A V A I L A B L E		
<b>69149-027</b>	<b>1.106/28.09</b>	<b>1.019/25.88</b>	<b>2 X 10</b>	<b>2</b>
69149-028		U N A V A I L A B L E		
<b>69149-029</b>	<b>.906/23.01</b>	<b>.819/20.80</b>	<b>2 X 8</b>	<b>1</b>
<b>69149-030</b>	<b>.806/20.47</b>	<b>.719/18.26</b>	<b>2 X 7</b>	<b>1</b>
<b>69149-031</b>	<b>.706/17.93</b>	<b>.619/15.72</b>	<b>2 X 6</b>	<b>1</b>
<b>69149-032</b>	<b>.606/15.39</b>	<b>.519/13.18</b>	<b>2 X 5</b>	<b>1</b>
<b>69149-033</b>	<b>.506/12.85</b>	<b>.419/10.64</b>	<b>2 X 4</b>	<b>1</b>
<b>69149-034LF</b>	<b>.606/15.39</b>	<b>.519/13.18</b>	<b>2 X 5</b>	<b>1</b>
<b>69149-035LF</b>	<b>.906/23.01</b>	<b>.819/20.80</b>	<b>2 X 8</b>	<b>1</b>



VIEW Z  
STYLE 2  
SCALE 5/1

STYLE 1  
SCALE 5/1



FCconnect.com

Copyright FCI

mat'l. code SEE NOTE 1				surface <input checked="" type="checkbox"/> tolerance		projection		product family PV HOUSINGS	
ltr	ecr no	dr	date	tolerances unless otherwise specified		title		MINI LATCH SHROUD	
H				angles	linear	INCH/MM			
				0±2'		scale 1:1			
				dr	M. CLOUSER	1/31/91		sheet 2 of 2 size	
				engr	C. TREXLER	1/30/91		69149 A3	
				chr	C. TREXLER	1/30/91		type Product Customer Drawing	
				appd	C. TREXLER	1/30/91			
sheet	revision								
index	sheet								