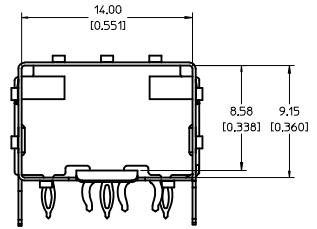
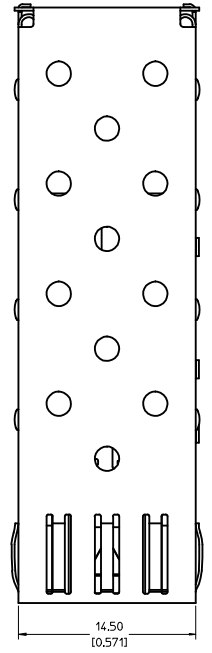
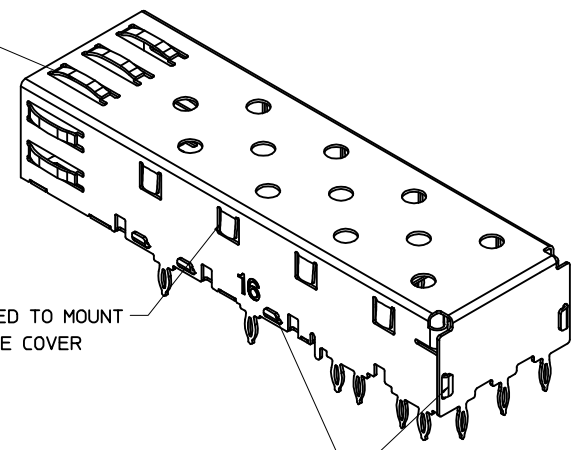


BOTTOM VIEW

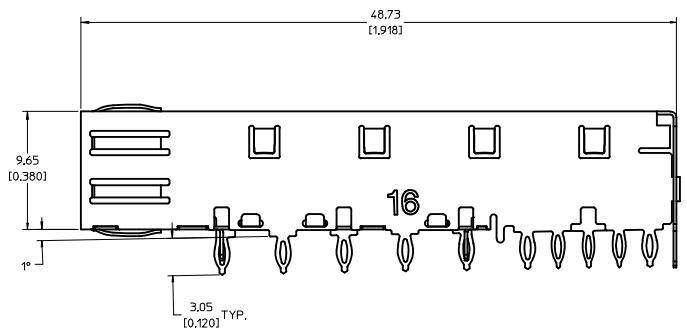


SPRING FINGER GASKET WITH TWO POINTS OF CONTACT. COMPLIES WITH (SFP) MSA BOARD AND BEZEL LOCATIONS.



TABS USED TO MOUNT LIGHT PIPE COVER

ONE PIECE DESIGN SECURLY FASTENED

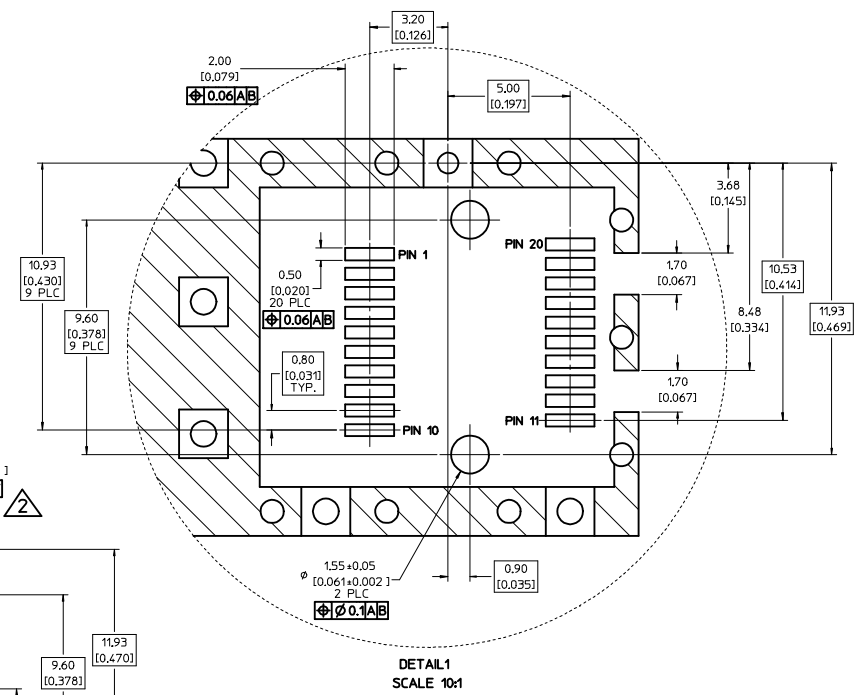
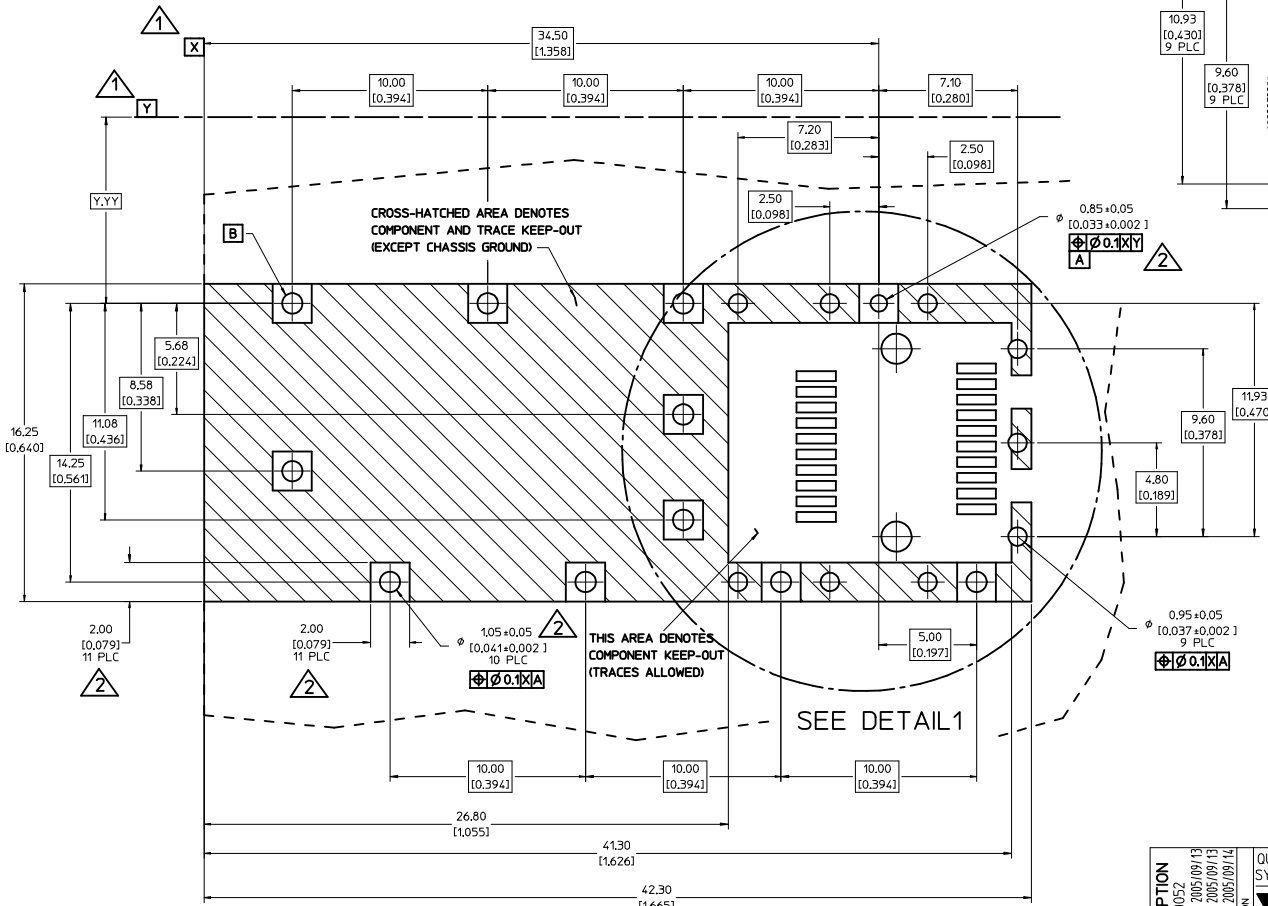


NOTES:

1. PRESS FIT LEGS, 0.120 INCHES LONG. 1.57 [0.062] MINIMUM PCB THICKNESS.
2. THIS CAGE IS FOR SINGLE SIDED USE ONLY.
3. CAN BE USED WITH THE FOLLOWING LIGHT PIPE PART NUMBERS:
 - 747260001 - LIGHT PIPE FROM BACK TO TOP (REFER TO DOCUMENT SD-74726-001)
 - 747260002 - LIGHT PIPE FROM SIDE TO TOP (REFER TO DOCUMENT SD-74726-002)
4. MATERIAL: COPPER ALLOY
PLATING: PRE-PLATED WITH NICKEL
5. THIS PART MEETS THE RESTRICTION OF HAZARDOUS SUBSTANCES IN ELECTRICAL AND ELECTRONIC EQUIPMENT (ROHS) DIRECTIVE (2002/95/EC).

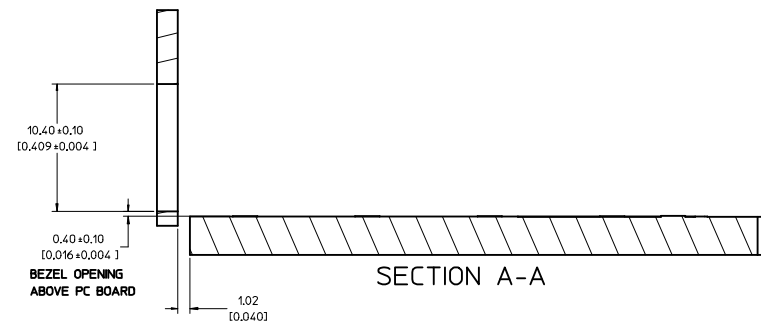
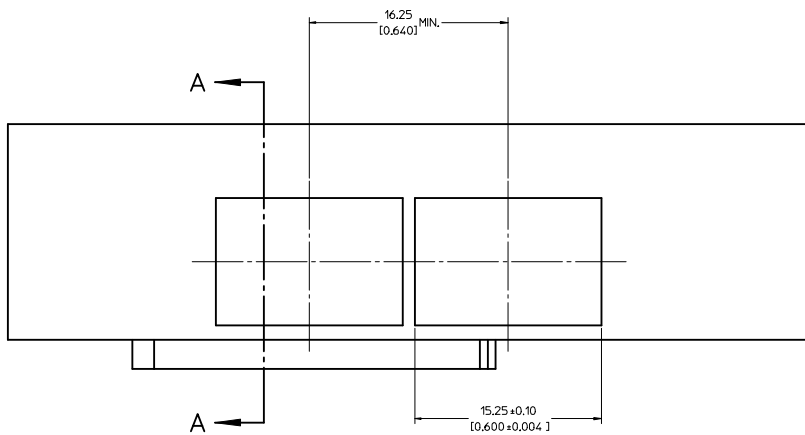
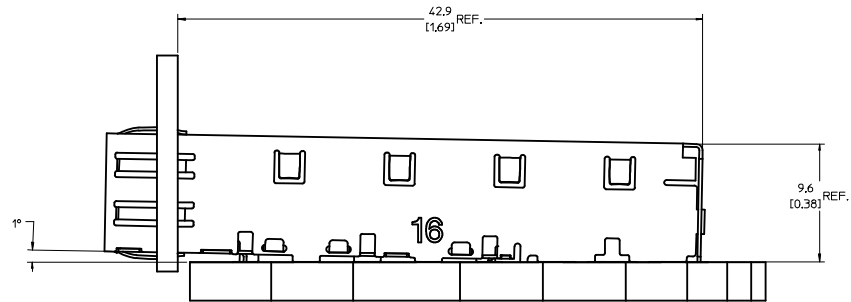
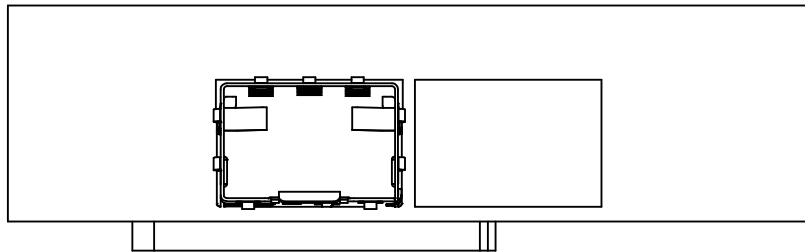
| | | | | | | | | |
|---|--------------------------------------|--|--|---|---------------------|---|------------------------|--|
| ENTER DESCRIPTION IEC NO: USY2006-0052 DRAWN BY: KSI MONSON 2005/09/13 CHECKED BY: CHYKORUSSELL 2005/09/13 APPROVED BY: APPR:BRUSSELL 2005/09/14 | QUALITY SYMBOLS ▽=0 ▽=0 | GENERAL TOLERANCES (UNLESS SPECIFIED) | | DIMENSION STYLE MM/IN | SCALE 5:1 | DESIGN UNITS METRIC | THIRD ANGLE PROJECTION | |
| | | 4 PLACES ±.--- ±.--- 3 PLACES ±.--- ±.005 2 PLACES ±0.13 ±.01 1 PLACE ±0.25 ±.--- ANGULAR ± 1° | DRAWN BY: KSI MONSON 2005/09/12 CHECKED BY: BRUSSELL 2005/09/12 APPROVED BY: BRUSSELL 2005/09/12 | TITLE SFP ONE PIECE CAGE PRESS-FIT (0.120 LEGS) FOR PCI | | MOLEX INCORPORATED | | |
| | | DRAFT WHERE APPLICABLE MUST REMAIN WITHIN DIMENSIONS | MATERIAL NO: 747370016 DOCUMENT NO: SD-74737-0016 | SHEET NO: 1 OF 3 | | THIS DRAWING CONTAINS INFORMATION THAT IS PROPRIETARY TO MOLEX INCORPORATED AND SHOULD NOT BE USED WITHOUT WRITTEN PERMISSION | | |

- 1 DATUM AND BASIC DIMENSIONS ESTABLISHED BY CUSTOMER.
- 2 PADS AND VIAS ARE CHASSIS GROUND.
- 3 HOLE LAYOUT SHOWN IS FOR SINGLE SIDED MOUNTING ONLY.
- 4 CONNECTOR PAD LAYOUT PER SFP MSA, WILL ACCOMMODATE MOLEX CONNECTOR SERIES 74441 OR EQUIVALENT.



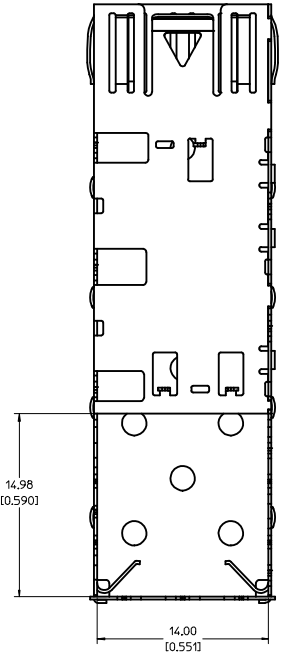
| ENTER DESCRIPTION IEC NO. USY2006-0052 DRAWN BY KSI/IMONSO 2005/09/13 CHECKED BY CHYK/BRUSSELL 2005/09/13 APPROVED BY APPR/BRUSSELL 2005/09/14 REVISION A | QUALITY SYMBOLS | GENERAL TOLERANCES (UNLESS SPECIFIED) <table border="1"> <thead> <tr> <th></th> <th>mm</th> <th>INCH</th> </tr> </thead> <tbody> <tr> <td>4 PLACES</td> <td>±---</td> <td>±---</td> </tr> <tr> <td>3 PLACES</td> <td>±---</td> <td>±.005</td> </tr> <tr> <td>2 PLACES</td> <td>±0.13</td> <td>±.01</td> </tr> <tr> <td>1 PLACE</td> <td>±0.25</td> <td>±---</td> </tr> </tbody> </table> | | mm | INCH | 4 PLACES | ±--- | ±--- | 3 PLACES | ±--- | ±.005 | 2 PLACES | ±0.13 | ±.01 | 1 PLACE | ±0.25 | ±--- | DIMENSION STYLE MM/IN SCALE 8:1 DESIGN UNITS METRIC THIRD ANGLE PROJECTION | TITLE SFP ONE PIECE CAGE PRESS-FIT (0.120 LEGS) FOR PCI MATERIAL NO. 747370016 DOCUMENT NO. SD-74737-0016 SIZE D THIS DRAWING CONTAINS INFORMATION THAT IS PROPRIETARY TO MOLEX INCORPORATED AND SHOULD NOT BE USED WITHOUT WRITTEN PERMISSION | SHEET NO. 2 OF 3 |
|---|--------------------------------|--|----------|------|------|----------|------|------|----------|------|-------|----------|-------|------|---------|-------|------|--|---|----------------------------|
| | | | | mm | INCH | | | | | | | | | | | | | | | |
| | | | 4 PLACES | ±--- | ±--- | | | | | | | | | | | | | | | |
| 3 PLACES | ±--- | ±.005 | | | | | | | | | | | | | | | | | | |
| 2 PLACES | ±0.13 | ±.01 | | | | | | | | | | | | | | | | | | |
| 1 PLACE | ±0.25 | ±--- | | | | | | | | | | | | | | | | | | |
| MOLEX INCORPORATED | | | | | | | | | | | | | | | | | | | | |
| DATE 2005/09/12 | | | | | | | | | | | | | | | | | | | | |

20 19 18 17 16 15 14 13 12 11 10 9 8 7 6 5 4 3 2 1

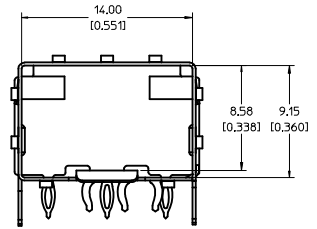
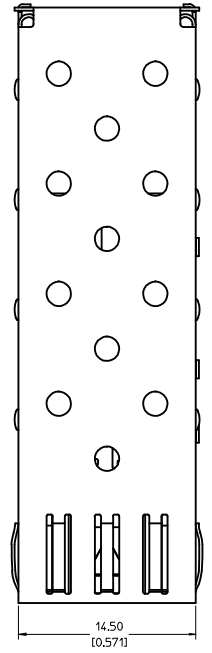


| ENTER DESCRIPTION IEC NO: USY2006-0052 DRAWN BY: KSI MONSO 2005/09/13 CHECKED BY: CHYD BRUSSELL 2005/09/13 APPROVED BY: APPR: BRUSSELL 2005/09/14 | QUALITY SYMBOLS ▽=0 ▽=0 | GENERAL TOLERANCES (UNLESS SPECIFIED) | DIMENSION STYLE MM/IN | SCALE 5:1 | DESIGN UNITS METRIC | THIRD ANGLE PROJECTION | | | | | | | | | | | | | | | |
|--|--|--|---------------------------------|---|------------------------|------------------------|------|------|----------|------|-------|----------|-------|------|---------|-------|------|---|--|---|--|
| | | <table border="1"> <thead> <tr> <th></th> <th>mm</th> <th>INCH</th> </tr> </thead> <tbody> <tr> <td>4 PLACES</td> <td>±---</td> <td>±---</td> </tr> <tr> <td>3 PLACES</td> <td>±---</td> <td>±.005</td> </tr> <tr> <td>2 PLACES</td> <td>±0.13</td> <td>±.01</td> </tr> <tr> <td>1 PLACE</td> <td>±0.25</td> <td>±---</td> </tr> </tbody> </table> | | mm | INCH | 4 PLACES | ±--- | ±--- | 3 PLACES | ±--- | ±.005 | 2 PLACES | ±0.13 | ±.01 | 1 PLACE | ±0.25 | ±--- | DRAWN BY: KSI MONSO 2005/09/12 CHECKED BY: BRUSSELL 2005/09/12 APPROVED BY: BRUSSELL 2005/09/12 | DATE: 2005/09/12 DATE: 2005/09/12 DATE: 2005/09/12 | TITLE: SFP ONE PIECE CAGE PRESS-FIT (0.120 LEGS) FOR PCI | |
| | | mm | INCH | | | | | | | | | | | | | | | | | | |
| | 4 PLACES | ±--- | ±--- | | | | | | | | | | | | | | | | | | |
| 3 PLACES | ±--- | ±.005 | | | | | | | | | | | | | | | | | | | |
| 2 PLACES | ±0.13 | ±.01 | | | | | | | | | | | | | | | | | | | |
| 1 PLACE | ±0.25 | ±--- | | | | | | | | | | | | | | | | | | | |
| | DRAFT WHERE APPLICABLE MUST REMAIN WITHIN DIMENSIONS | MATERIAL NO: 747370016 | DOCUMENT NO: SD-74737-0016 | MOLEX INCORPORATED | SHEET NO: 3 OF 3 | | | | | | | | | | | | | | | | |
| | | DRAFT WHERE APPLICABLE MUST REMAIN WITHIN DIMENSIONS | SIZE: D | THIS DRAWING CONTAINS INFORMATION THAT IS PROPRIETARY TO MOLEX INCORPORATED AND SHOULD NOT BE USED WITHOUT WRITTEN PERMISSION | | | | | | | | | | | | | | | | | |

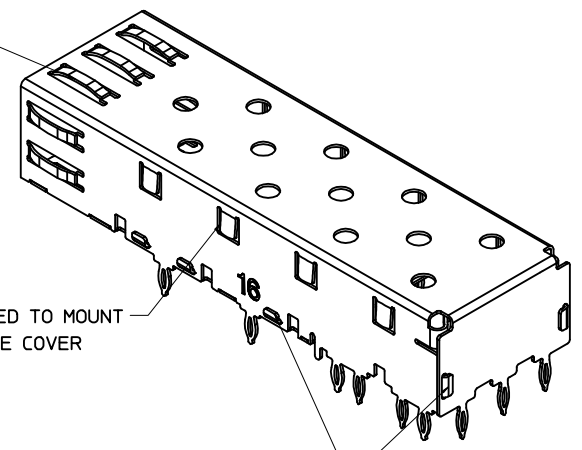
19 18 17 16 15 14 13 12 11 10 9 8 7 6 5 4 3 2 1



BOTTOM VIEW

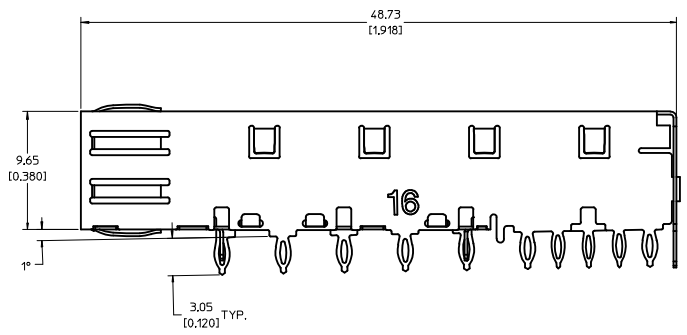


SPRING FINGER GASKET WITH TWO POINTS OF CONTACT. COMPLIES WITH (SFP) MSA BOARD AND BEZEL LOCATIONS.



TABS USED TO MOUNT LIGHT PIPE COVER

ONE PIECE DESIGN SECURLY FASTENED

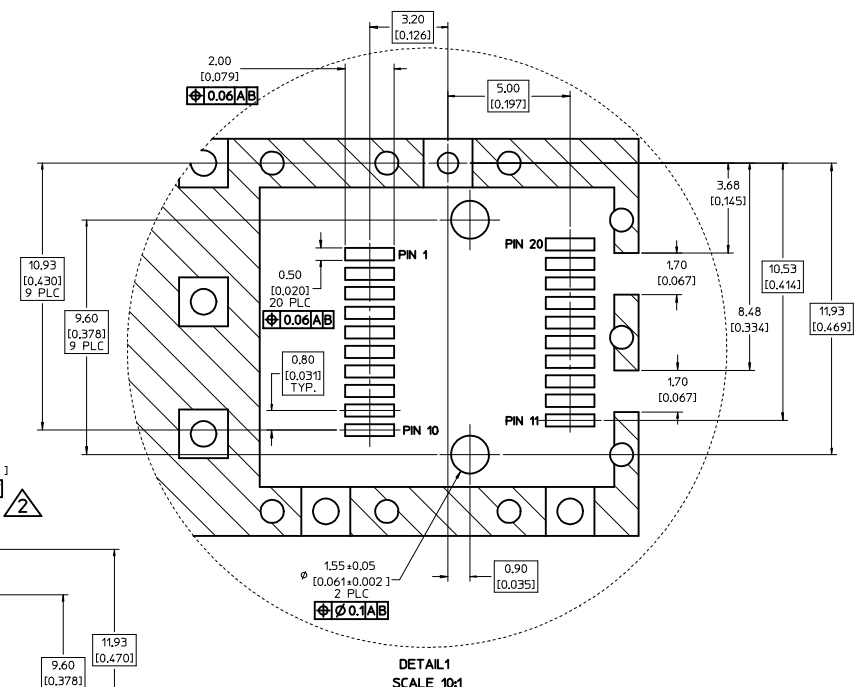
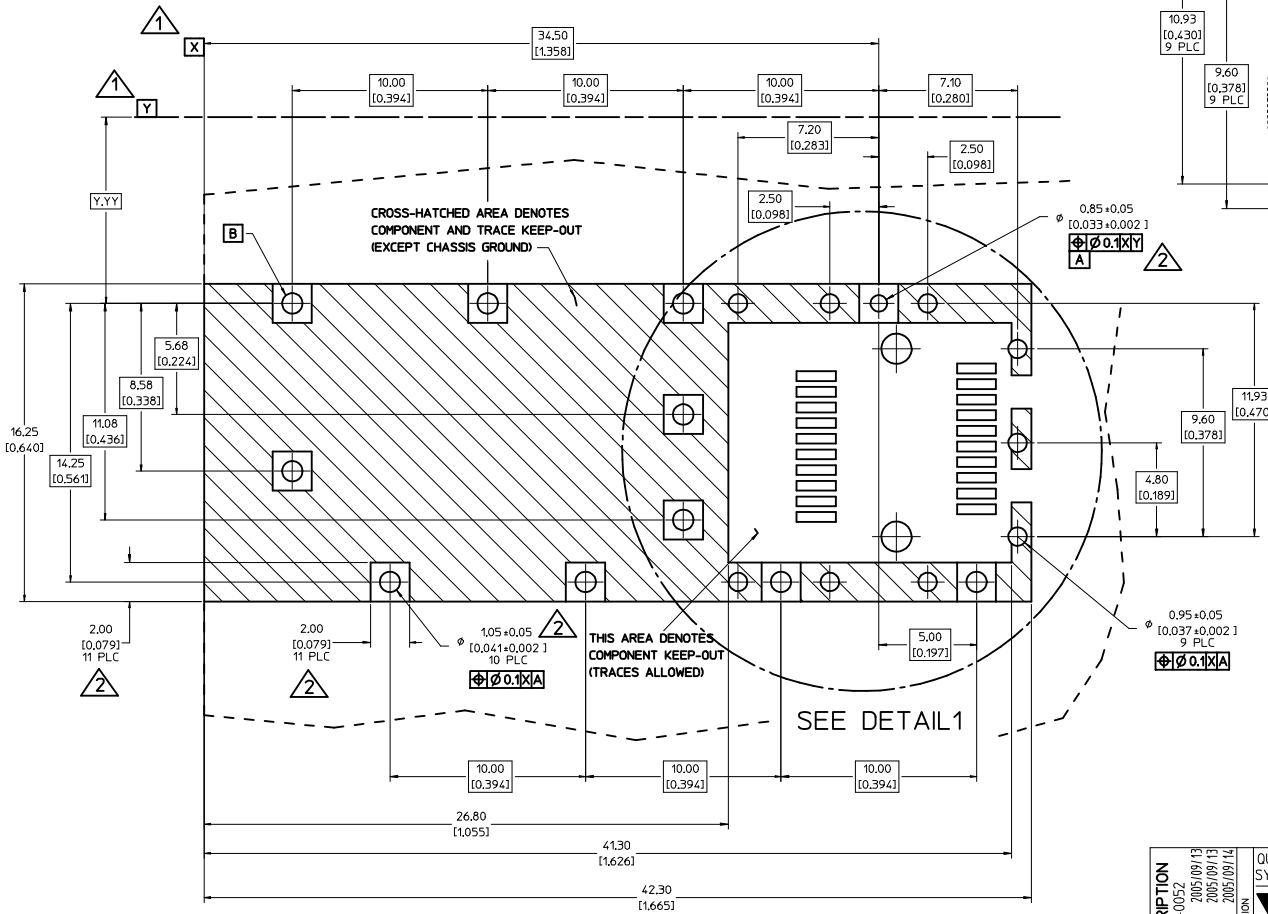


NOTES:

1. PRESS FIT LEGS, 0.120 INCHES LONG. 1.57 [0.062] MINIMUM PCB THICKNESS.
2. THIS CAGE IS FOR SINGLE SIDED USE ONLY.
3. CAN BE USED WITH THE FOLLOWING LIGHT PIPE PART NUMBERS:
 - 747260001 - LIGHT PIPE FROM BACK TO TOP (REFER TO DOCUMENT SD-74726-001)
 - 747260002 - LIGHT PIPE FROM SIDE TO TOP (REFER TO DOCUMENT SD-74726-002)
4. MATERIAL: COPPER ALLOY
PLATING: PRE-PLATED WITH NICKEL
5. THIS PART MEETS THE RESTRICTION OF HAZARDOUS SUBSTANCES IN ELECTRICAL AND ELECTRONIC EQUIPMENT (ROHS) DIRECTIVE (2002/95/EC).

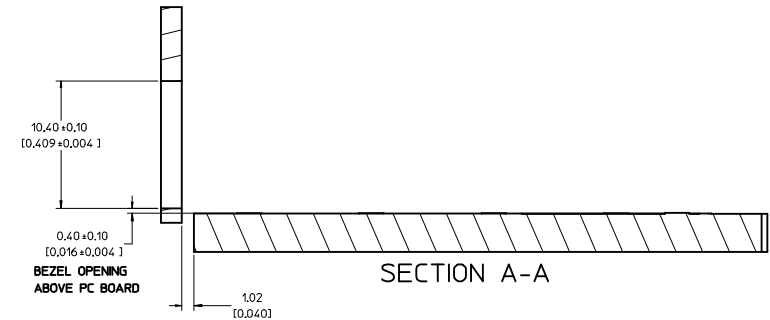
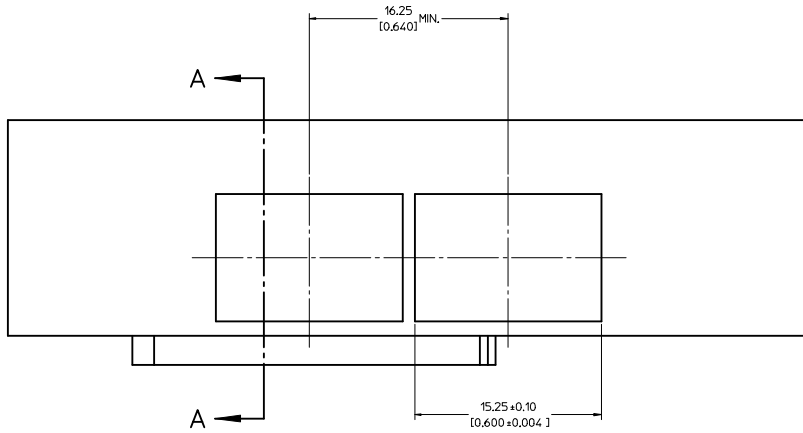
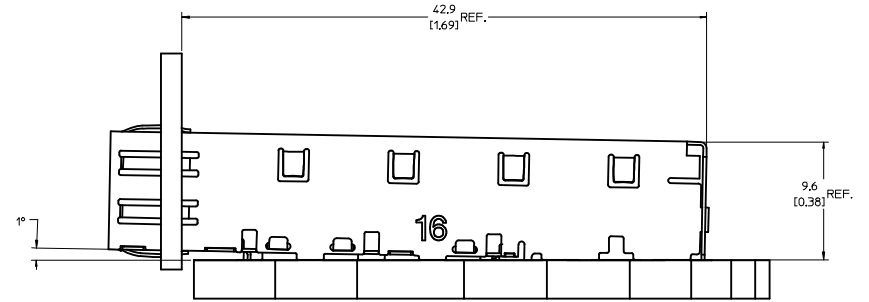
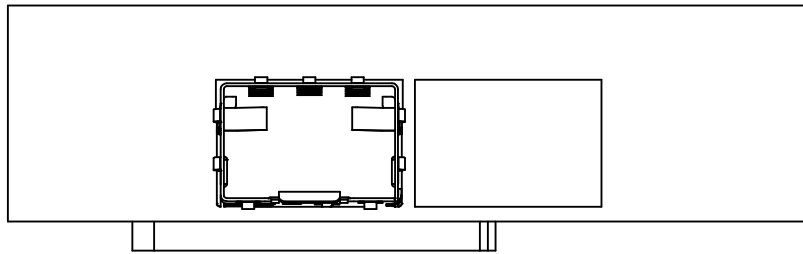
| | | | | | | | | | |
|---|-------------------------------|--|------------|-------------------------------|--------------------|--|------------------------|------------------------|--|
| ENTER DESCRIPTION IEC NO: USY2006-0052 DRAWN BY: KSI MONSON 2005/09/13 CHECKED BY: CHYOK BRUSSELL 2005/09/13 APPROVED BY: APPR: BRUSSELL 2005/09/14 | QUALITY SYMBOLS ▽=0 ▽=0 | GENERAL TOLERANCES (UNLESS SPECIFIED) | | DIMENSION STYLE MM/IN | | SCALE 5:1 | DESIGN UNITS METRIC | THIRD ANGLE PROJECTION | |
| | | 4 PLACES ±.005 ±.005 3 PLACES ±.013 ±.01 2 PLACES ±.025 ±.01 1 PLACE ±.025 ±.01 | mm INCH | DRAWN BY KSI MONSON | DATE 2005/09/12 | TITLE SFP ONE PIECE CAGE PRESS-FIT (0.120 LEGS) FOR PCI | | | |
| | | ANGULAR ± 1° | | APPROVED BY BRUSSELL | DATE 2005/09/12 | MOLEX INCORPORATED | | | |
| DRAFT WHERE APPLICABLE MUST REMAIN WITHIN DIMENSIONS | | MATERIAL NO. 747370016 | | DOCUMENT NO. SD-74737-0016 | | SHEET NO. 1 OF 3 | | | |

- 1 DATUM AND BASIC DIMENSIONS ESTABLISHED BY CUSTOMER.
- 2 PADS AND VIAS ARE CHASSIS GROUND.
- 3 HOLE LAYOUT SHOWN IS FOR SINGLE SIDED MOUNTING ONLY.
- 4 CONNECTOR PAD LAYOUT PER SFP MSA, WILL ACCOMMODATE MOLEX CONNECTOR SERIES 74441 OR EQUIVALENT.



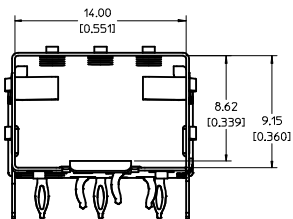
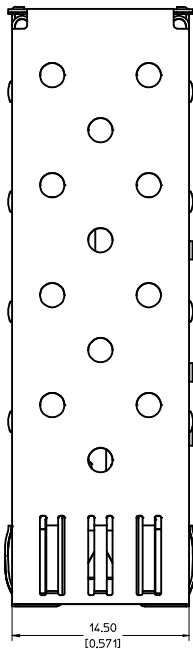
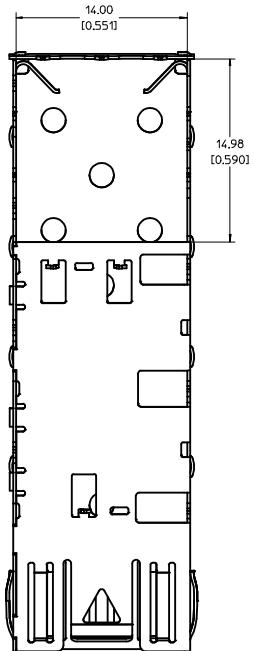
| ENTER DESCRIPTION IEC NO.: USY2006-0052 DRAWN BY: KSI MONSO 2005/09/13 CHECKED BY: CHYD BRUSSELL 2005/09/13 APPR: BRUSSELL 2005/09/14 | QUALITY SYMBOLS ▽=0 ▽=0 | GENERAL TOLERANCES (UNLESS SPECIFIED) <table border="1"> <tr> <th></th> <th>MM</th> <th>INCH</th> </tr> <tr> <td>4 PLACES</td> <td>±---</td> <td>±---</td> </tr> <tr> <td>3 PLACES</td> <td>±---</td> <td>±.005</td> </tr> <tr> <td>2 PLACES</td> <td>±0.13</td> <td>±.01</td> </tr> <tr> <td>1 PLACE</td> <td>±0.25</td> <td>±---</td> </tr> </table> | | | MM | INCH | 4 PLACES | ±--- | ±--- | 3 PLACES | ±--- | ±.005 | 2 PLACES | ±0.13 | ±.01 | 1 PLACE | ±0.25 | ±--- | DIMENSION STYLE MM/IN | SCALE 8:1 | DESIGN UNITS METRIC | THIRD ANGLE PROJECTION |
|--|--------------------------------------|--|--------------------------------------|---------------------------|----|----------------------------|----------|------|------|----------|------|-------|----------|-------|------|---------|-------|------|---------------------------------|---------------------|-------------------------------|------------------------|
| | | | MM | INCH | | | | | | | | | | | | | | | | | | |
| | | 4 PLACES | ±--- | ±--- | | | | | | | | | | | | | | | | | | |
| 3 PLACES | ±--- | ±.005 | | | | | | | | | | | | | | | | | | | | |
| 2 PLACES | ±0.13 | ±.01 | | | | | | | | | | | | | | | | | | | | |
| 1 PLACE | ±0.25 | ±--- | | | | | | | | | | | | | | | | | | | | |
| DRAFT WHERE APPLICABLE MUST REMAIN WITHIN DIMENSIONS | | MATERIAL NO. 747370016 | DOCUMENT NO. SD-74737-0016 | MOLEX INCORPORATED | | SHEET NO. 2 OF 3 | | | | | | | | | | | | | | | | |
| THIS DRAWING CONTAINS INFORMATION THAT IS PROPRIETARY TO MOLEX INCORPORATED AND SHOULD NOT BE USED WITHOUT WRITTEN PERMISSION | | | | | | | | | | | | | | | | | | | | | | |

20 19 18 17 16 15 14 13 12 11 10 9 8 7 6 5 4 3 2 1

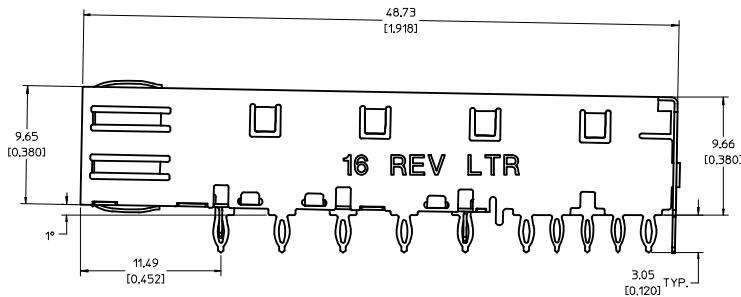
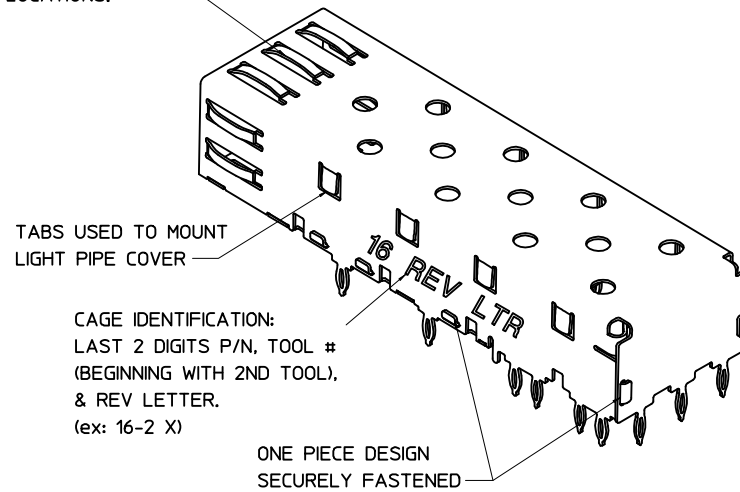


| ENTER DESCRIPTION IEC NO: USY2006-0052 DRAWN BY: KSI MONSO 2005/09/13 CHECKED BY: CHYD BRUSSELL 2005/09/13 APPROVED BY: APPR: BRUSSELL 2005/09/14 | QUALITY SYMBOLS ▽=0 ▽=0 | GENERAL TOLERANCES (UNLESS SPECIFIED) <table border="1"> <thead> <tr> <th></th> <th>mm</th> <th>INCH</th> </tr> </thead> <tbody> <tr> <td>4 PLACES</td> <td>±---</td> <td>±---</td> </tr> <tr> <td>3 PLACES</td> <td>±---</td> <td>±.005</td> </tr> <tr> <td>2 PLACES</td> <td>±0.13</td> <td>±.01</td> </tr> <tr> <td>1 PLACE</td> <td>±0.25</td> <td>±---</td> </tr> <tr> <td colspan="3">ANGULAR ± 1°</td> </tr> </tbody> </table> | | mm | INCH | 4 PLACES | ±--- | ±--- | 3 PLACES | ±--- | ±.005 | 2 PLACES | ±0.13 | ±.01 | 1 PLACE | ±0.25 | ±--- | ANGULAR ± 1° | | | DIMENSION STYLE MM/IN | SCALE 5:1 | DESIGN UNITS METRIC | THIRD ANGLE PROJECTION |
|--|--|--|--------------------|---------------------|------|----------|------|------|----------|------|-------|----------|-------|------|---------|-------|------|--------------|--|--|--------------------------|--------------|------------------------|------------------------|
| | | mm | INCH | | | | | | | | | | | | | | | | | | | | | |
| | 4 PLACES | ±--- | ±--- | | | | | | | | | | | | | | | | | | | | | |
| | 3 PLACES | ±--- | ±.005 | | | | | | | | | | | | | | | | | | | | | |
| 2 PLACES | ±0.13 | ±.01 | | | | | | | | | | | | | | | | | | | | | | |
| 1 PLACE | ±0.25 | ±--- | | | | | | | | | | | | | | | | | | | | | | |
| ANGULAR ± 1° | | | | | | | | | | | | | | | | | | | | | | | | |
| DRAWN BY: KSI MONSO 2005/09/12 CHECKED BY: BRUSSELL 2005/09/12 APPROVED BY: BRUSSELL 2005/09/12 | DATE: 2005/09/12 DATE: 2005/09/12 DATE: 2005/09/12 | TITLE SFP ONE PIECE CAGE PRESS-FIT (0.120 LEGS) FOR PCI | MOLEX INCORPORATED | | | | | | | | | | | | | | | | | | | | | |
| MATERIAL NO: 747370016 | DOCUMENT NO: SD-74737-0016 | THIS DRAWING CONTAINS INFORMATION THAT IS PROPRIETARY TO MOLEX INCORPORATED AND SHOULD NOT BE USED WITHOUT WRITTEN PERMISSION | | SHEET NO: 3 OF 3 | | | | | | | | | | | | | | | | | | | | |
| DRAFT WHERE APPLICABLE MUST REMAIN WITHIN DIMENSIONS | | SIZE D | | | | | | | | | | | | | | | | | | | | | | |

19 18 17 16 15 14 13 12 11 10 9 8 7 6 5 4 3 2 1



SPRING FINGER GASKET WITH TWO POINTS OF CONTACT. COMPLIES WITH (SFP) MSA BOARD AND BEZEL LOCATIONS.



NOTES:

- PRESS FIT LEGS, 0.120 INCHES LONG. 1.57 [0.062] MINIMUM PCB THICKNESS.
- THIS CAGE IS FOR SINGLE SIDED USE ONLY.
- CAN BE USED WITH THE FOLLOWING LIGHT PIPE PART NUMBERS:

747260001 - LIGHT PIPE FROM BACK TO TOP
(REFER TO DOCUMENT SD-74726-001)

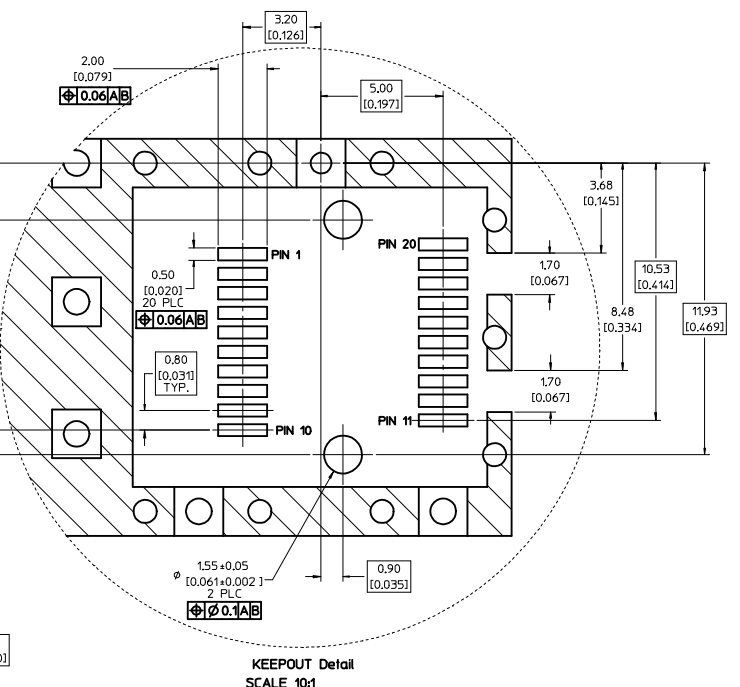
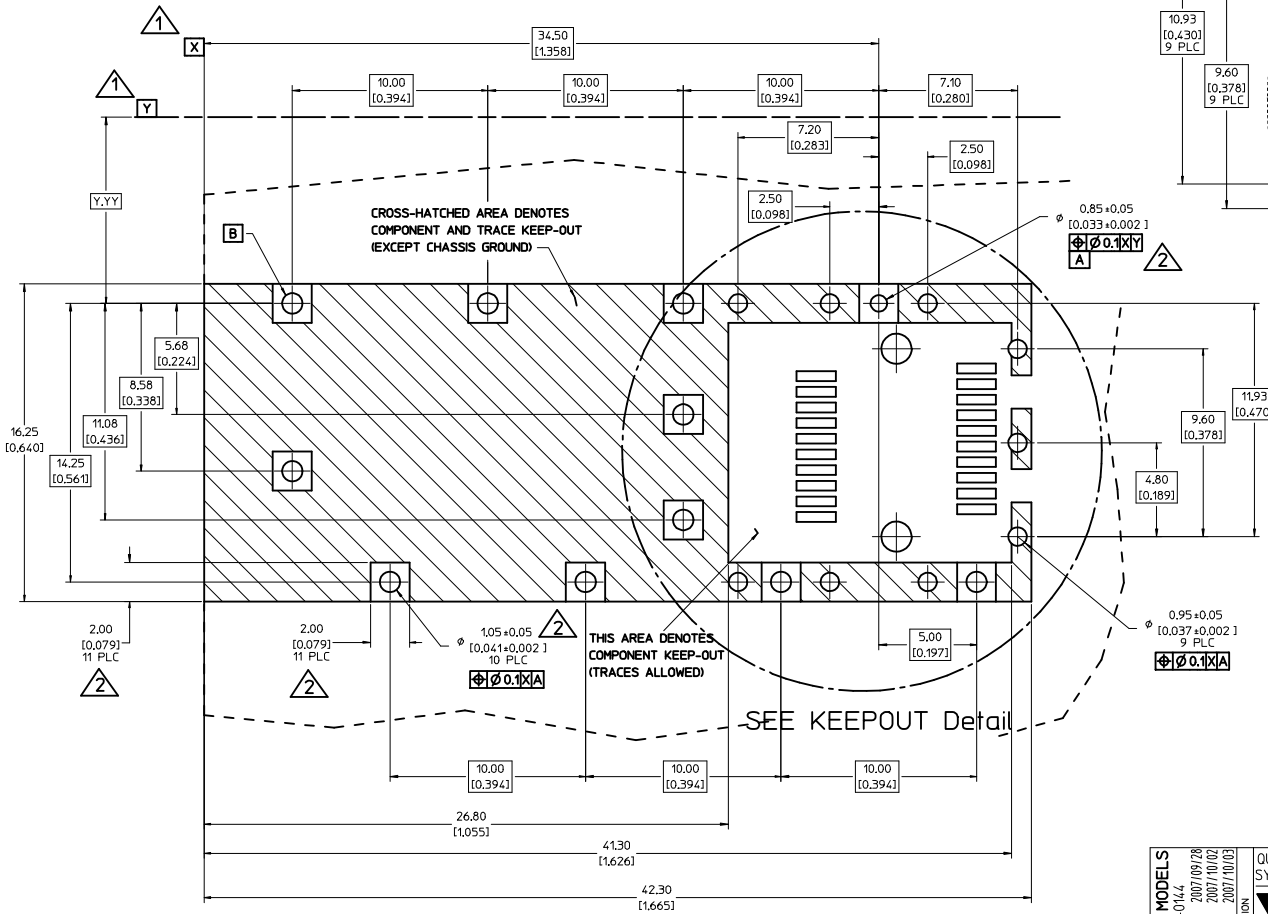
747260002 - LIGHT PIPE FROM SIDE TO TOP
(REFER TO DOCUMENT SD-74726-002)

- MATERIAL: COPPER ALLOY
PLATING: PRE-PLATED WITH NICKEL

- THIS PART MEETS THE RESTRICTION OF HAZARDOUS SUBSTANCES IN ELECTRICAL AND ELECTRONIC EQUIPMENT (ROHS) DIRECTIVE (2002/95/EC).

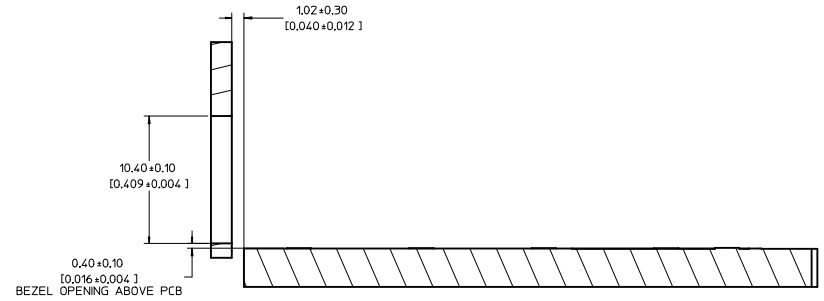
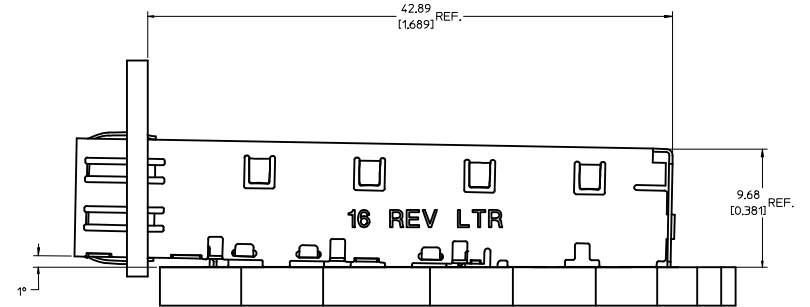
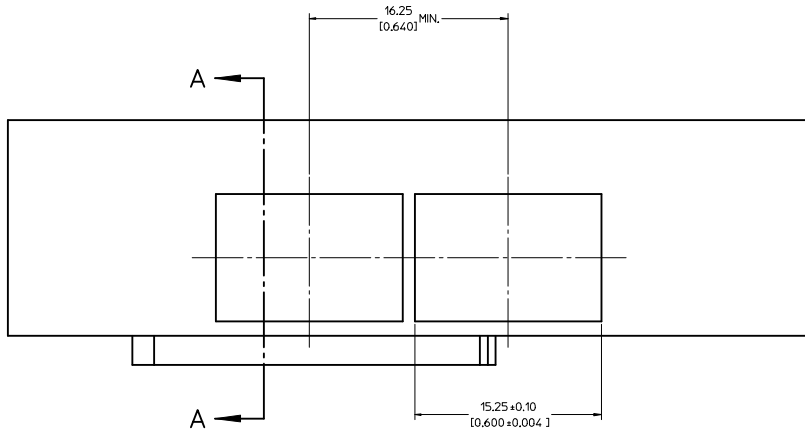
| | | | | | | | |
|--|--|---|-----------------|-------|--------------|---|--|
| UPDATED 3D MODELS USY 2008-0144 DRAWN BY: CCOX 2007/09/28 CHKD: CCOX 2007/10/02 APPR: RMAHMOOD 2007/10/03 REV DESCRIPTION | QUALITY SYMBOLS | GENERAL TOLERANCES (UNLESS SPECIFIED) | DIMENSION STYLE | SCALE | DESIGN UNITS | THIRD ANGLE PROJECTION | |
| | ▽=0 ▽=0 | mm INCH 4 PLACES ±--- ±--- 3 PLACES ±--- ±.005 2 PLACES ±0.13 ±.01 1 PLACE ±0.25 ±--- ANGULAR ± 1° | MM/IN | 5:1 | METRIC | | |
| | DRAFT WHERE APPLICABLE MUST REMAIN WITHIN DIMENSIONS | | | | | DRAWN BY: CCOX DATE: 2006/10/30 CHECKED BY: RMAHMOOD DATE: 2006/10/30 APPROVED BY: RMAHMOOD DATE: 2006/10/30 MATERIAL NO. 747370016 DOCUMENT NO. SD-74737-016 | TITLE: SFP ONE PIECE CAGE PRESS-FIT (0.120 LEGS) FOR PCI MOLEX INCORPORATED |
| | | | | | | SHEET NO. 1 OF 4 THIS DRAWING CONTAINS INFORMATION THAT IS PROPRIETARY TO MOLEX INCORPORATED AND SHOULD NOT BE USED WITHOUT WRITTEN PERMISSION | |

- 1 DATUM AND BASIC DIMENSIONS ESTABLISHED BY CUSTOMER.
- 2 PADS AND VIAS ARE CHASSIS GROUND.
- 3 HOLE LAYOUT SHOWN IS FOR SINGLE SIDED MOUNTING ONLY.
- 4 CONNECTOR PAD LAYOUT PER SFP MSA, WILL ACCOMMODATE MOLEX CONNECTOR SERIES 74441 OR EQUIVALENT.



| | | | | | | |
|--|--|---|---|-------------------------------------|--|------------------------|
| UPDATED 3D MODELS USY2006-0144 2007/09/28 CCX 2007/10/02 CHYD 2007/10/02 APPR:RAHMOOD 2007/10/03 REV DESCRIPTION | QUALITY SYMBOLS | GENERAL TOLERANCES (UNLESS SPECIFIED) | DIMENSION STYLE | SCALE | DESIGN UNITS | THIRD ANGLE PROJECTION |
| | $\nabla=0$ $\nabla=0$ | mm INCH 4 PLACES ± --- ± --- 3 PLACES ± --- ± .005 2 PLACES ± 0.13 ± .01 1 PLACE ± 0.25 ± --- ANGULAR ± 1° | MM/IN | 8:1 | METRIC | |
| | DRAFT WHERE APPLICABLE MUST REMAIN WITHIN DIMENSIONS | DRAWN BY DATE CCX 2006/10/30 CHECKED BY DATE RAHMOOD 2006/10/30 APPROVED BY DATE RAHMOOD 2006/10/30 | MATERIAL NO. 747370016 | DOCUMENT NO. SD-74737-016 | TITLE SFP ONE PIECE CAGE PRESS-FIT (0,120 LEGS) FOR PCI | |
| | | MOLEX INCORPORATED 2 OF 4 | THIS DRAWING CONTAINS INFORMATION THAT IS PROPRIETARY TO MOLEX INCORPORATED AND SHOULD NOT BE USED WITHOUT WRITTEN PERMISSION | | | |

20 19 18 17 16 15 14 13 12 11 10 9 8 7 6 5 4 3 2 1



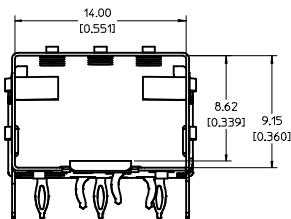
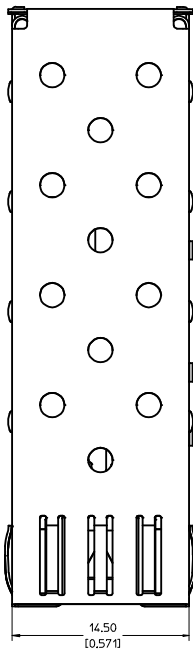
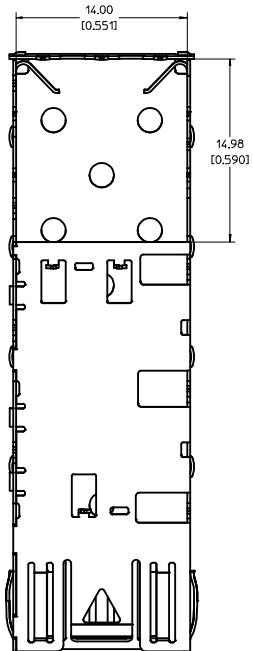
SECTION A-A

| UPDATED 3D MODELS USY2008-0144 2007/09/28 CCX 2007/10/02 CHYK 2007/10/03 APPR:RMAHMOOD | QUALITY SYMBOLS ▽=0 ▽=0 | GENERAL TOLERANCES (UNLESS SPECIFIED) <table border="1"> <thead> <tr> <th></th> <th>mm</th> <th>INCH</th> </tr> </thead> <tbody> <tr> <td>4 PLACES</td> <td>±---</td> <td>±---</td> </tr> <tr> <td>3 PLACES</td> <td>±---</td> <td>±.005</td> </tr> <tr> <td>2 PLACES</td> <td>±0.13</td> <td>±.01</td> </tr> <tr> <td>1 PLACE</td> <td>±0.25</td> <td>±---</td> </tr> <tr> <td colspan="3">ANGULAR ± 1°</td> </tr> </tbody> </table> | | mm | INCH | 4 PLACES | ±--- | ±--- | 3 PLACES | ±--- | ±.005 | 2 PLACES | ±0.13 | ±.01 | 1 PLACE | ±0.25 | ±--- | ANGULAR ± 1° | | | DIMENSION STYLE MM/IN | SCALE 5:1 | DESIGN UNITS METRIC | THIRD ANGLE PROJECTION |
|--|--------------------------------------|--|------------------------------|--------------------|--------------------|--|---|------|----------|------|-------|----------|-------|------|---------|-------|------|--------------|--|--|--------------------------|--------------|------------------------|------------------------|
| | | mm | INCH | | | | | | | | | | | | | | | | | | | | | |
| | 4 PLACES | ±--- | ±--- | | | | | | | | | | | | | | | | | | | | | |
| | 3 PLACES | ±--- | ±.005 | | | | | | | | | | | | | | | | | | | | | |
| 2 PLACES | ±0.13 | ±.01 | | | | | | | | | | | | | | | | | | | | | | |
| 1 PLACE | ±0.25 | ±--- | | | | | | | | | | | | | | | | | | | | | | |
| ANGULAR ± 1° | | | | | | | | | | | | | | | | | | | | | | | | |
| DRAWN BY CCX 2006/10/30 | CHECKED BY RMAHMOOD 2006/10/30 | APPROVED BY RMAHMOOD 2006/10/30 | DATE 2006/10/30 | DATE 2006/10/30 | DATE 2006/10/30 | TITLE SFP ONE PIECE CAGE PRESS-FIT (0.120 LEGS) FOR PCI | | | | | | | | | | | | | | | | | | |
| MATERIAL NO. 747370016 | | | DOCUMENT NO. SD-74737-016 | | | SHEET NO. 3 OF 4 | | | | | | | | | | | | | | | | | | |
| DRAFT WHERE APPLICABLE MUST REMAIN WITHIN DIMENSIONS | | | | | | | THIS DRAWING CONTAINS INFORMATION THAT IS PROPRIETARY TO MOLEX INCORPORATED AND SHOULD NOT BE USED WITHOUT WRITTEN PERMISSION | | | | | | | | | | | | | | | | | |

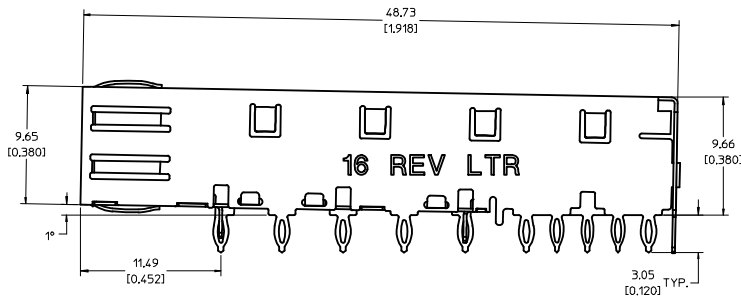
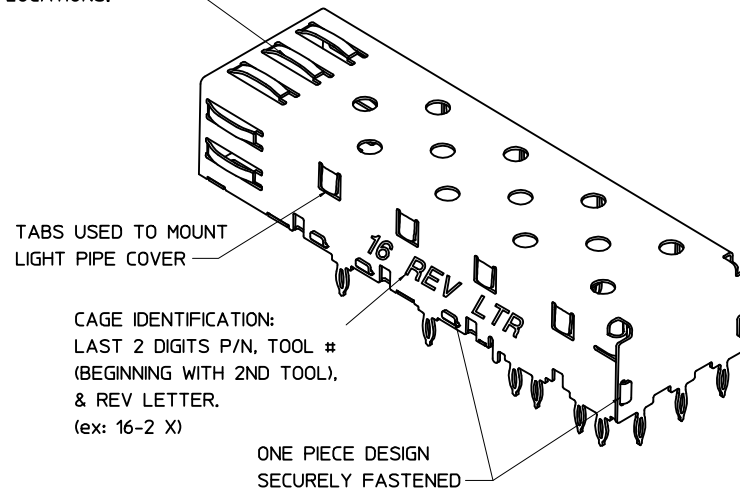
19 18 17 16 15 14 13 12 11 10 9 8 7 6 5 4 3 2 1

| DATE | REV | CHANGES |
|------------|-----|--|
| 2005/06/10 | A | INITIAL RELEASE |
| 2006/10/20 | B | SEPARATED FROM MAIN DRAWING E-74737-0000, UPDATED VIEWS |
| 2007/01/10 | C | ADDED NOTE 5 |
| 2007/09/27 | D | [1] ON SHT2 CHG'D DETAIL1 TO "KEEPOUT DETAIL" AND FRONT1 TO "PCB LAYOUT"; [2] ADDED REVISION SHEET; [3] ON SHT1 ROTATED BTM_VIEW 180 DEGREES. [4] ADDED "TOOL # (BEGINNING WITH 2ND TOOL)" TO CAGE REV NOTE ON SHT1. |
| | | |
| | | |
| | | |
| | | |
| | | |
| | | |
| | | |
| | | |
| | | |
| | | |
| | | |

| UPDATED 3D MODELS USY2008-0144 DRAWN:CCOX 2007/09/28 CHYK: 2007/10/02 APPR:RMAHMOOD 2007/10/03 REV DESCRIPTION | QUALITY SYMBOLS = 0 = 0 | GENERAL TOLERANCES (UNLESS SPECIFIED) <table border="1"> <thead> <tr> <th></th> <th>mm</th> <th>INCH</th> </tr> </thead> <tbody> <tr> <td>4 PLACES</td> <td>± .005</td> <td>± .0005</td> </tr> <tr> <td>3 PLACES</td> <td>± .01</td> <td>± .001</td> </tr> <tr> <td>2 PLACES</td> <td>± 0.13</td> <td>± .01</td> </tr> <tr> <td>1 PLACE</td> <td>± 0.25</td> <td>± .01</td> </tr> <tr> <td colspan="3">ANGULAR ± 1°</td> </tr> </tbody> </table> | | mm | INCH | 4 PLACES | ± .005 | ± .0005 | 3 PLACES | ± .01 | ± .001 | 2 PLACES | ± 0.13 | ± .01 | 1 PLACE | ± 0.25 | ± .01 | ANGULAR ± 1° | | | DIMENSION STYLE MM/IN SCALE 1:1 DESIGN UNITS METRIC THIRD ANGLE PROJECTION | DRAWN BY CCOX DATE 2006/10/30 CHECKED BY RMAHMOOD DATE 2006/10/30 APPROVED BY RMAHMOOD DATE 2006/10/30 | TITLE SFP ONE PIECE CAGE PRESS-FIT (0,120 LEGS) FOR PCI MOLEX INCORPORATED DOCUMENT NO. SD-74737-016 | MATERIAL NO. 747370016 SHEET NO. 4 OF 4 |
|---|-------------------------------|---|---------|----|------|----------|--------|---------|----------|-------|--------|----------|--------|-------|---------|--------|-------|--------------|--|--|--|---|--|--|
| | | mm | INCH | | | | | | | | | | | | | | | | | | | | | |
| | 4 PLACES | ± .005 | ± .0005 | | | | | | | | | | | | | | | | | | | | | |
| | 3 PLACES | ± .01 | ± .001 | | | | | | | | | | | | | | | | | | | | | |
| 2 PLACES | ± 0.13 | ± .01 | | | | | | | | | | | | | | | | | | | | | | |
| 1 PLACE | ± 0.25 | ± .01 | | | | | | | | | | | | | | | | | | | | | | |
| ANGULAR ± 1° | | | | | | | | | | | | | | | | | | | | | | | | |
| DRAFT WHERE APPLICABLE MUST REMAIN WITHIN DIMENSIONS | | THIS DRAWING CONTAINS INFORMATION THAT IS PROPRIETARY TO MOLEX INCORPORATED AND SHOULD NOT BE USED WITHOUT WRITTEN PERMISSION | | | | | | | | | | | | | | | | | | | | | | |



SPRING FINGER GASKET WITH TWO POINTS OF CONTACT. COMPLIES WITH (SFP) MSA BOARD AND BEZEL LOCATIONS.



NOTES:

- PRESS FIT LEGS, 0.120 INCHES LONG. 1.57 [0.062] MINIMUM PCB THICKNESS.
- THIS CAGE IS FOR SINGLE SIDED USE ONLY.
- CAN BE USED WITH THE FOLLOWING LIGHT PIPE PART NUMBERS:

747260001 - LIGHT PIPE FROM BACK TO TOP
(REFER TO DOCUMENT SD-74726-001)

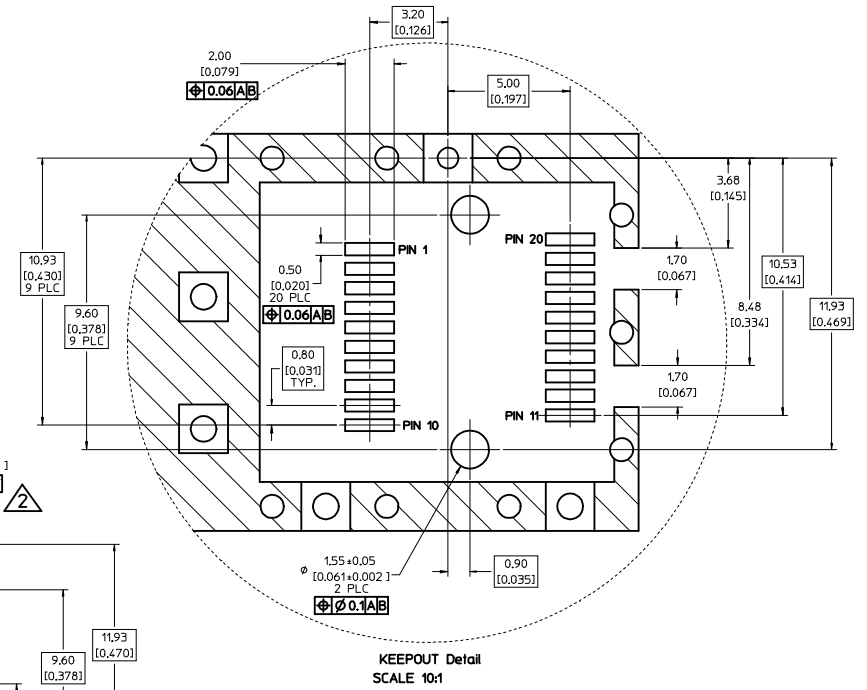
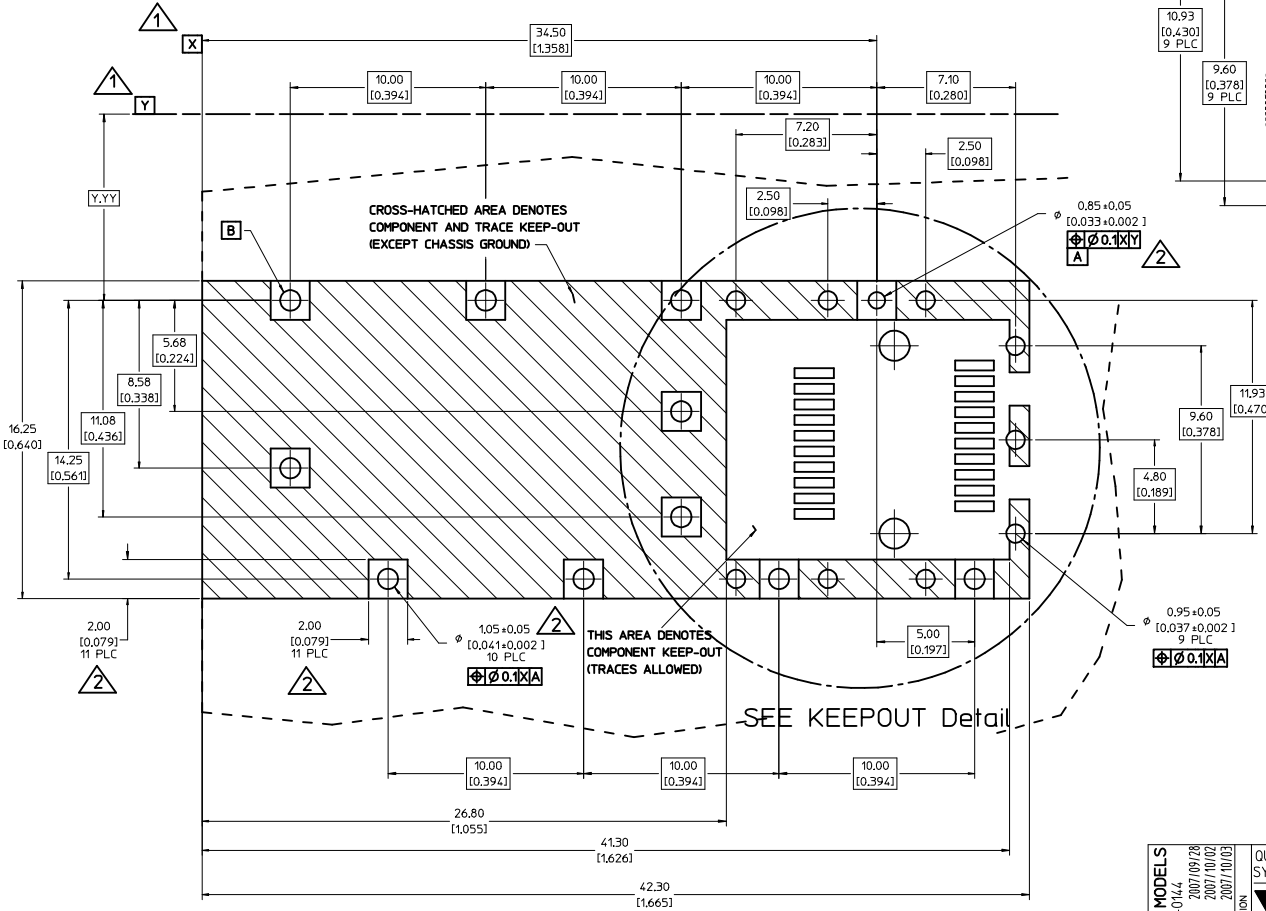
747260002 - LIGHT PIPE FROM SIDE TO TOP
(REFER TO DOCUMENT SD-74726-002)

- MATERIAL: COPPER ALLOY
PLATING: PRE-PLATED WITH NICKEL

- THIS PART MEETS THE RESTRICTION OF HAZARDOUS SUBSTANCES IN ELECTRICAL AND ELECTRONIC EQUIPMENT (ROHS) DIRECTIVE (2002/95/EC).

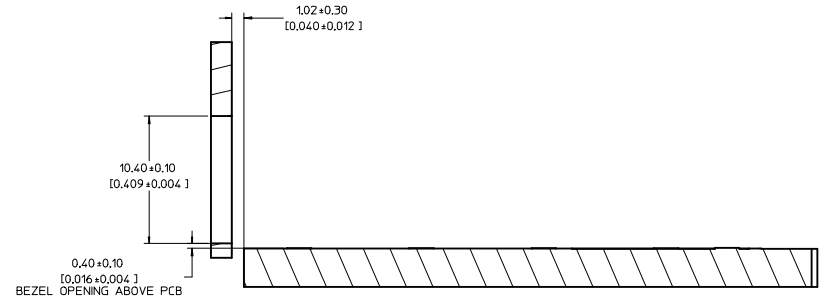
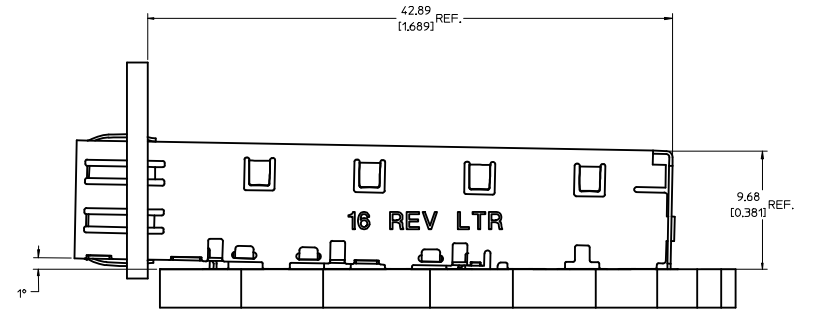
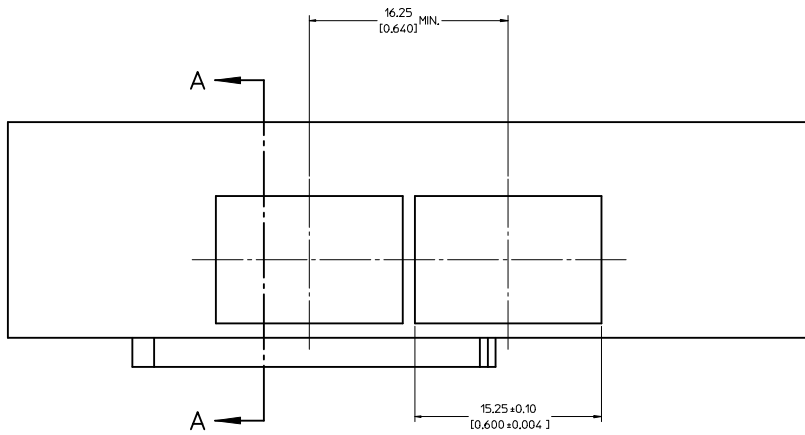
| | | | | | | | | | | |
|---|-------------------------------|---|---------------------|---------------------------|------------------------------|------------------------|---------------------------------|---------------------------------------|--|--|
| UPDATED 3D MODELS USY 2008-0144 DRAWN BY: CCOX 2007/09/28 CHKD: CCOX 2007/10/02 APPR: RMAHMOOD 2007/10/03 | QUALITY SYMBOLS ▽=0 ▽=0 | GENERAL TOLERANCES (UNLESS SPECIFIED) | | DIMENSION STYLE MM/IN | SCALE 5:1 | DESIGN UNITS METRIC | THIRD ANGLE PROJECTION | | | |
| | | 4 PLACES ±--- ±--- | 3 PLACES ±--- ±.005 | 2 PLACES ±0.13 ±.01 | 1 PLACE ±0.25 ±--- | ANGULAR ± 1° | DRAWN BY: CCOX DATE: 2006/10/30 | CHECKED BY: RMAHMOOD DATE: 2006/10/30 | APPROVED BY: RMAHMOOD DATE: 2006/10/30 | TITLE SFP ONE PIECE CAGE PRESS-FIT (0.120 LEGS) FOR PCI |
| | | DRAFT WHERE APPLICABLE MUST REMAIN WITHIN DIMENSIONS | | MATERIAL NO. 747370016 | DOCUMENT NO. SD-74737-016 | MOLEX INCORPORATED | | SHEET NO. 1 OF 4 | | |
| | | THIS DRAWING CONTAINS INFORMATION THAT IS PROPRIETARY TO MOLEX INCORPORATED AND SHOULD NOT BE USED WITHOUT WRITTEN PERMISSION | | | | | | | | |

- 1 DATUM AND BASIC DIMENSIONS ESTABLISHED BY CUSTOMER.
- 2 PADS AND VIAS ARE CHASSIS GROUND.
- 3 HOLE LAYOUT SHOWN IS FOR SINGLE SIDED MOUNTING ONLY.
- 4 CONNECTOR PAD LAYOUT PER SFP MSA, WILL ACCOMMODATE MOLEX CONNECTOR SERIES 74441 OR EQUIVALENT.



| | | | | | | | | |
|---|--|--|-----------------------|---|---------------------|---|------------------------|--------------------|
| UPDATED 3D MODELS USY 2006-0144 2007/09/28 CHYD: 2007/10/02 APPR:RMAHMOOD 2007/10/03 | QUALITY SYMBOLS ▽=0 ▽=0 | GENERAL TOLERANCES (UNLESS SPECIFIED) | | DIMENSION STYLE MM/IN | SCALE 8:1 | DESIGN UNITS METRIC | THIRD ANGLE PROJECTION | |
| | | 4 PLACES ± --- ± --- | 3 PLACES ± --- ± .005 | DRAWN BY CCOX | DATE 2006/10/30 | TITLE SFP ONE PIECE CAGE PRESS-FIT (0,120 LEGS) FOR PCI | | |
| | | 2 PLACES ± 0.13 ± .01 | 1 PLACE ± 0.25 ± --- | CHECKED BY RMAHMOOD | DATE 2006/10/30 | APPROVED BY RMAHMOOD | | |
| | | ANGULAR ± 1 ° | | MATERIAL NO. 747370016 | | DOCUMENT NO. SD-74737-016 | | MOLEX INCORPORATED |
| DRAFT WHERE APPLICABLE MUST REMAIN WITHIN DIMENSIONS | | SIZE D | | THIS DRAWING CONTAINS INFORMATION THAT IS PROPRIETARY TO MOLEX INCORPORATED AND SHOULD NOT BE USED WITHOUT WRITTEN PERMISSION | | | | |

20 19 18 17 16 15 14 13 12 11 10 9 8 7 6 5 4 3 2 1



SECTION A-A

| UPDATED 3D MODELS USY2008-0144 2007/09/28 DRAWN: CCOX CHYK: 2007/10/02 APPR: RMAHMOOD 2007/10/03 | QUALITY SYMBOLS ▽=0 ▽=0 | GENERAL TOLERANCES (UNLESS SPECIFIED) <table border="1"> <thead> <tr> <th></th> <th>mm</th> <th>INCH</th> </tr> </thead> <tbody> <tr> <td>4 PLACES</td> <td>±---</td> <td>±---</td> </tr> <tr> <td>3 PLACES</td> <td>±---</td> <td>±.005</td> </tr> <tr> <td>2 PLACES</td> <td>±0.13</td> <td>±.01</td> </tr> <tr> <td>1 PLACE</td> <td>±0.25</td> <td>±---</td> </tr> </tbody> </table> ANGULAR ± 1° | | mm | INCH | 4 PLACES | ±--- | ±--- | 3 PLACES | ±--- | ±.005 | 2 PLACES | ±0.13 | ±.01 | 1 PLACE | ±0.25 | ±--- | DIMENSION STYLE MM/IN DRAWN BY: CCOX DATE: 2006/10/30 CHECKED BY: RMAHMOOD DATE: 2006/10/30 APPROVED BY: RMAHMOOD DATE: 2006/10/30 | SCALE: 5:1 DESIGN UNITS: METRIC THIRD ANGLE PROJECTION | TITLE: SFP ONE PIECE CAGE PRESS-FIT (0,120 LEGS) FOR PCI MOLEX INCORPORATED |
|---|---|--|-------|----|------|----------|------|------|----------|------|-------|----------|-------|------|---------|-------|------|---|--|--|
| | | mm | INCH | | | | | | | | | | | | | | | | | |
| | 4 PLACES | ±--- | ±--- | | | | | | | | | | | | | | | | | |
| | 3 PLACES | ±--- | ±.005 | | | | | | | | | | | | | | | | | |
| 2 PLACES | ±0.13 | ±.01 | | | | | | | | | | | | | | | | | | |
| 1 PLACE | ±0.25 | ±--- | | | | | | | | | | | | | | | | | | |
| DRAFT WHERE APPLICABLE MUST REMAIN WITHIN DIMENSIONS | MATERIAL NO.: 747370016 DOCUMENT NO.: SD-74737-016 | SHEET NO.: 3 OF 4 | | | | | | | | | | | | | | | | | | |
| THIS DRAWING CONTAINS INFORMATION THAT IS PROPRIETARY TO MOLEX INCORPORATED AND SHOULD NOT BE USED WITHOUT WRITTEN PERMISSION | | | | | | | | | | | | | | | | | | | | |
| SIZE: D | | | | | | | | | | | | | | | | | | | | |

19 18 17 16 15 14 13 12 11 10 9 8 7 6 5 4 3 2 1

| DATE | REV | CHANGES |
|------------|-----|--|
| 2005/06/10 | A | INITIAL RELEASE |
| 2006/10/20 | B | SEPARATED FROM MAIN DRAWING E-74737-0000, UPDATED VIEWS |
| 2007/01/10 | C | ADDED NOTE 5 |
| 2007/09/27 | D | [1] ON SHT2 CHG'D DETAIL1 TO "KEEPOUT DETAIL" AND FRONT1 TO "PCB LAYOUT"; [2] ADDED REVISION SHEET; [3] ON SHT1 ROTATED BTM_VIEW 180 DEGREES. [4] ADDED "TOOL # (BEGINNING WITH 2ND TOOL)" TO CAGE REV NOTE ON SHT1. |
| | | |
| | | |
| | | |
| | | |
| | | |
| | | |
| | | |
| | | |
| | | |

| | | | | | | | | |
|--|--------------------------------------|--|---|---|--------------|---------------------------|------------------------|------------------------------|
| UPDATED 3D MODELS USY2008-0144 DRWN:CCOX 2007/09/28 CHYK: 2007/10/02 APPR:RMAHMOOD 2007/10/03 | QUALITY SYMBOLS ◀=0 ▽=0 | GENERAL TOLERANCES (UNLESS SPECIFIED) | | DIMENSION STYLE MM/IN | SCALE 1:1 | DESIGN UNITS METRIC | THIRD ANGLE PROJECTION | |
| | | 4 PLACES ± --- ± --- 3 PLACES ± --- ± .005 2 PLACES ± 0.13 ± .01 1 PLACE ± 0.25 ± --- ANGULAR ± 1° | DRAWN BY DATE CCOX 2006/10/30 CHECKED BY DATE RMAHMOOD 2006/10/30 APPROVED BY DATE RMAHMOOD 2006/10/30 | TITLE SFP ONE PIECE CAGE PRESS-FIT (0,120 LEGS) FOR PCI | | MATERIAL NO. 747370016 | | DOCUMENT NO. SD-74737-016 |
| DRAFT WHERE APPLICABLE MUST REMAIN WITHIN DIMENSIONS | | SIZE D | | THIS DRAWING CONTAINS INFORMATION THAT IS PROPRIETARY TO MOLEX INCORPORATED AND SHOULD NOT BE USED WITHOUT WRITTEN PERMISSION | | | | SHEET NO. 4 OF 4 |