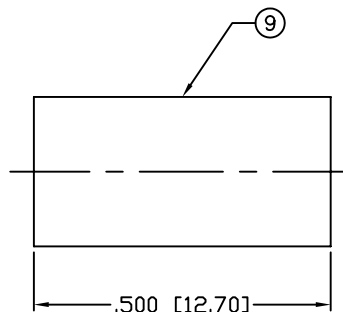
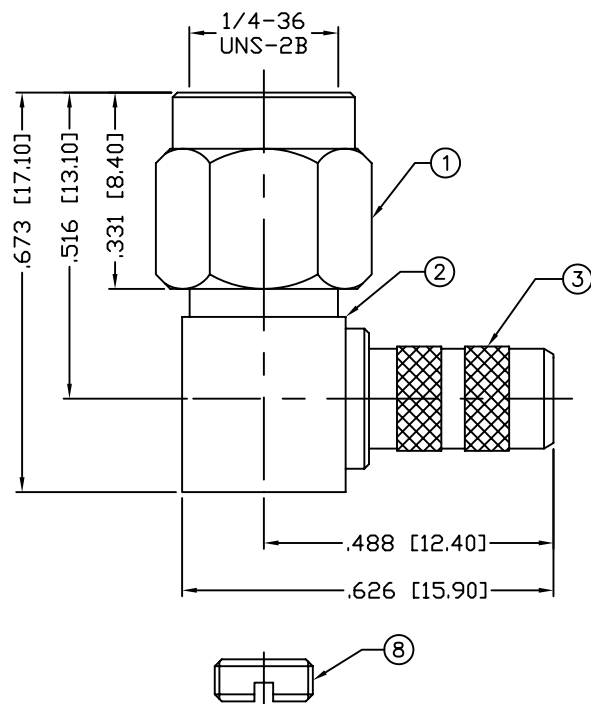


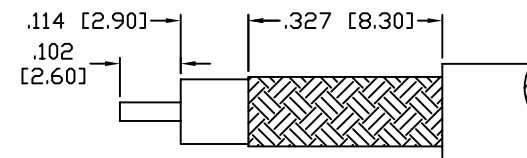
PART NO.

**RSA-3010-1C**

REV	DESCRIPTION	DWN	DATE	APPROVED
-	ENGINEERING RELEASE	CZS	08/19/09	JDMc



RECOMMENDED CRIMP DIE .213



RECOMMENDED STRIPPING DIMENSIONS

**SPECIFICATIONS:**

IMPEDANCE: 50 Ohms

FREQUENCY RANGE: 0-12.4 GHz

INSERTION LOSS(dB):  $0.04 \times \sqrt{f(\text{GHz})}$ 

WORKING VOLTAGE: 500 V rms Max. @ Sea Level

INSULATION RESISTANCE: 5k M Ohms min.

TEMPERATURE RANGE: -65°C TO 165°C

FOR RG-58, 58A, 58C, 141, 141A, BELDEN 8240,

8259, 8262, 9201, 9203, 9310, 9311 &amp; COMM/SCOPE 0268

NOTE: ATTACH CABLE TO CONNECTOR BY  
SOLDERING THE CABLE INNER CONDUCTOR  
TO THE PIN SLOT INSIDE THE CONNECTOR

9	FERRULE	1	BRASS	GOLD, 3 $\mu$ "
8	SCREW CAP	1	BRASS	GOLD, 3 $\mu$ "
7	GASKET	1	SILICONE	---
6	RETAINING RING	1	BeCu	---
5	PIN	1	BRASS	GOLD, 50 $\mu$ "
4	INSULATOR	1	PTFE	---
3	FERRULE STUD	1	BRASS	GOLD, 3 $\mu$ "
2	BODY	1	BRASS	GOLD, 3 $\mu$ "
1	SHELL	1	BRASS	GOLD, 3 $\mu$ "
#	DESCRIPTION	QTY	MATERIAL	FINISH

CUSTOMER  
OUTLINE DRAWINGALL DIMENSIONS  
ARE REFERENCE ONLYUNLESS OTHERWISE SPECIFIED:  
DIMENSIONS ARE IN INCHES  
AND [MILLIMETERS]DRAWN  
C. ZUNIGA 08/19/09

CHECKED

ORJ DRAWN  
C. ZUNIGA 08/19/09**RoHS  
COMPLIANT**PROPRIETARY AND CONFIDENTIAL  
THIS DRAWING CONTAINS  
INFORMATION PROPRIETARY TO  
RF INDUSTRIES. ANY  
UNAUTHORIZED USE OF THIS  
DRAWING IS EXPRESSLY  
PROHIBITED WITHOUT WRITTEN  
PERMISSION FROM RF  
INDUSTRIES. ANY VIOLATION IS  
PUNISHABLE UNDER U.S.  
COPYRIGHT LAWS.**RFconnectors**  
DIVISION OF RF INDUSTRIES, LTD.7610 MIRAMAR RD.  
SAN DIEGO, CA 92126  
(858) 549-6340  
(858) 549-6345 FAX**SMA PLUG, CRIMP**  
RIGHT ANGLE

SIZE	CABLE GROUP	DWG NO.	REV
A	C	<b>RSA-3010-1C</b>	---
SCALE: NTS	ENGINEERING ID: 008974	SHEET 1 OF 1	