

MICRO SWITCH

A DIVISION OF HONEYWELL REGULATORY COMPANY
FREEPORT, ILLINOIS

FED. MFR. CODE 91929

SWITCH - ENCLOSED

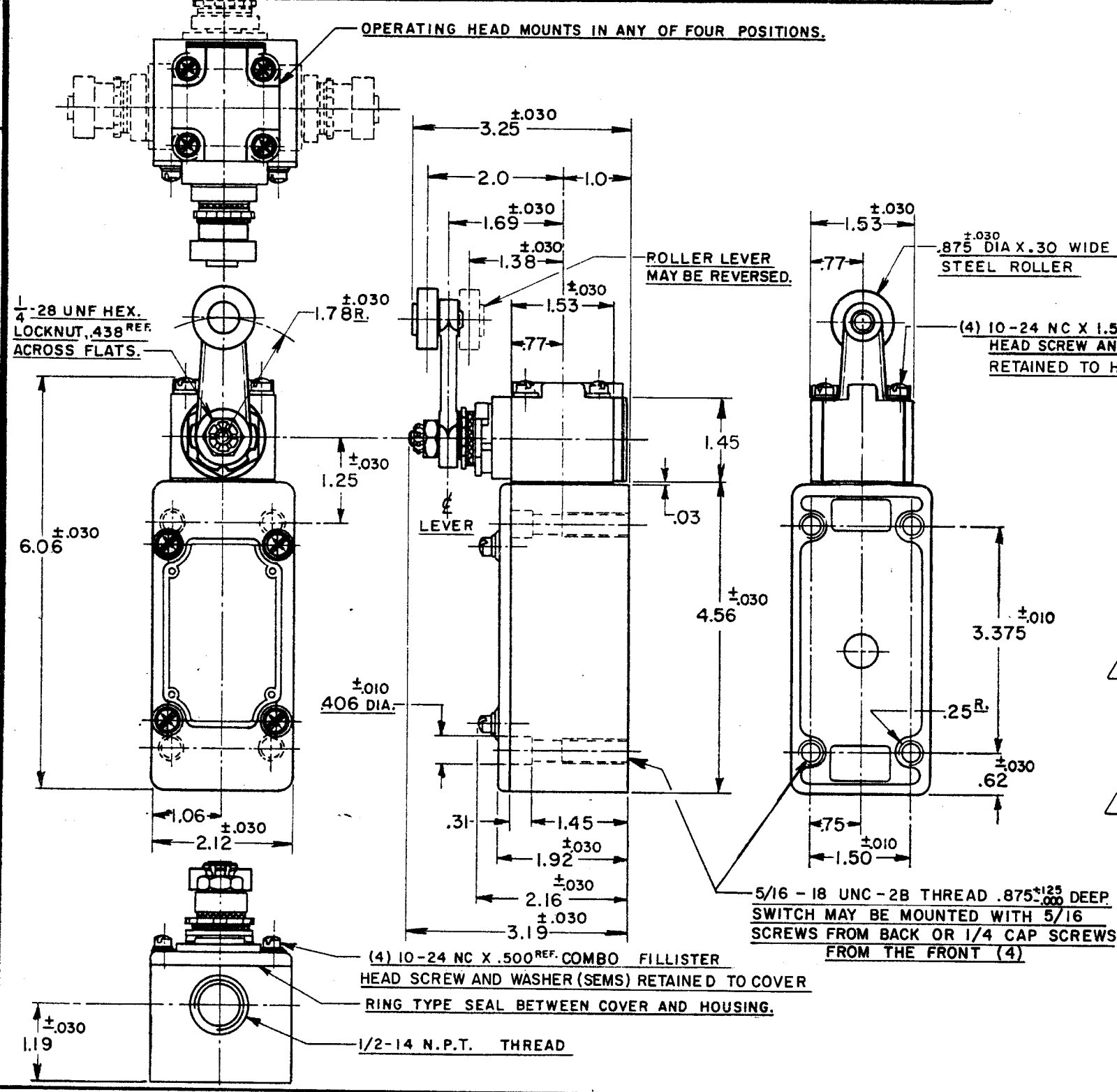
CATALOG LISTING

51ML1

THIS DRAWING COVERS A PROPRIETARY ITEM AND IS THE PROPERTY OF MICRO SWITCH, A DIVISION OF HONEYWELL. THIS DRAWING IS NOT TO BE COPIED OR USED WITHOUT THE APPROVAL OF MICRO SWITCH.



(M) 51ML1 ISSUE 4
 51ML1
 DRAWING NUMBER
 14
 ISSUE
 8
 REVISIONS
 A CO 8520
 R. L. Z.
 12 OCT. 56
 B CORR.
 L. C. S.
 11 OCT. 57
 C CO11247
 G. C. H.
 21 FEB. 58
 D CO12789
 M. B. F.
 14 MAY 58
 E CO18841
 H. B. W.
 20 JAN. 65
 F CO20578
 M. B. F.
 30 NOV. 65
 G CO26064
 M. B. S.
 25 JUNE 69
 H CO52194
 G. J. W.
 22 SEP. 83
 J CO55051-B
 K CO74287
 G. J. W.
 22 APR. 93
 R. L. Z. 12 OCT. 56
 DRAWN



NOTES

- 1 - IT IS ESSENTIAL TO PREVENT ENTRANCE OF HARMFUL AGENTS THRU THE CONDUIT OPENING TO OBTAIN THE FULL BENEFIT OF THE SEALED CONSTRUCTION PROVIDED IN THIS UNIT
- 2 SWITCH IS ASSEMBLED FOR ACTUATION IN EITHER DIRECTION
- 3 - LEVER MAY BE POSITIVELY LOCKED AT INTERVALS OF APPROX 0.4° (870 POSITIONS)
- 4 - LEVER MAY BE ADJUSTED TO ACTUATE THE SWITCH IN THE CLOCKWISE DIRECTION ONLY, THE COUNTER-CLOCKWISE DIRECTION ONLY, OR IN BOTH DIRECTIONS
- 5 TO CONVERT SWITCH FOR ACTUATION IN EITHER CLOCKWISE OR COUNTER-CLOCKWISE DIRECTION ONLY, REMOVE THE HEAD AND SLIDE THE CAM TOWARD THE REAR OF THE HEAD SUFFICIENTLY TO DISENGAGE FROM THE FLATS ON THE SHAFT. ROTATE THE CAM 90° IN THE OPPOSITE DIRECTION OF THE ACTUATION DESIRED AND RE-ENGAGE THE CAM WITH THE FLATS ON THE SHAFT

CHARACTERISTICS	
OPERATING FORCE	3 LBS. MAX.
FULL OVERTRAVEL FORCE	4 LBS. MAX.
RELEASE FORCE	1/4 LB. MIN.
PRETRAVEL	12° MAX.
DIFFERENTIAL TRAVEL	4° MAX.
OVERTRAVEL	60° MIN.
SWITCH-BASIC REPLACEMENT — IMKI	

ELECTRICAL DATA	
CONTACT ARRANGEMENT S. P. D. T.	
20 A-120, 240, 480 OR 600 VAC; 3/4 HP-120 VAC, 1 1/2 H.P.-240 VAC; 1/2 A-115 VDC; 1/4 A-230 VDC PILOT DUTY RATING: 600 VAC MAX.	

SCALE 1/2 TO 1
DO NOT SCALE PRINT

UNLESS OTHERWISE SPECIFIED DIMENSIONS ARE IN INCHES

TOLERANCES ARE:

ONE PLACE (.0)	±0.030
TWO PLACE (.00)	±0.015
THREE PLACE (.000)	±0.005
ANGLES	±

WEIGHT

