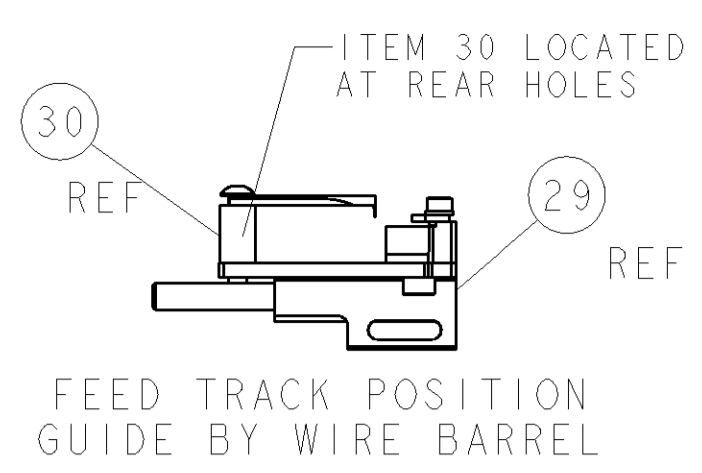
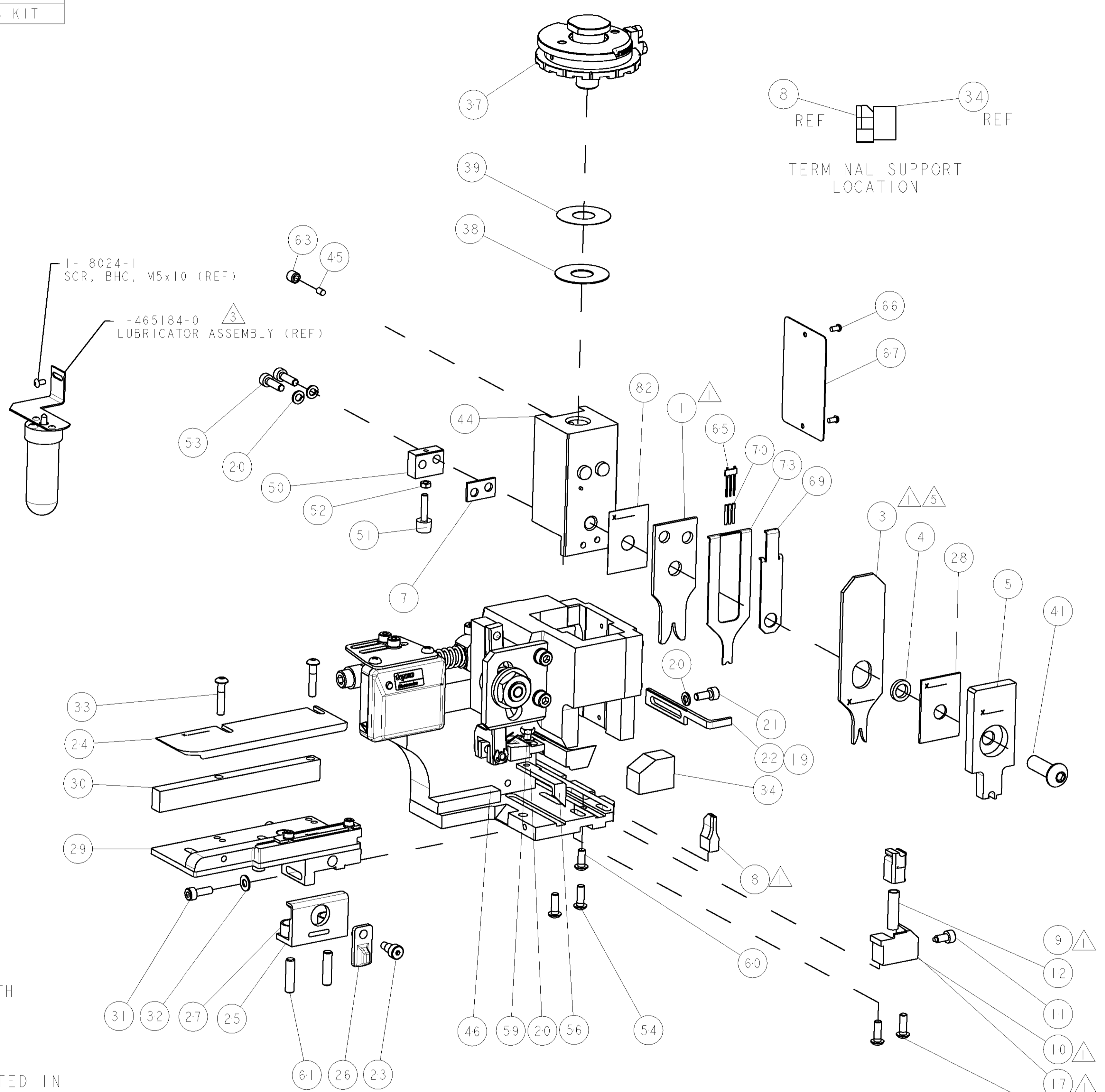
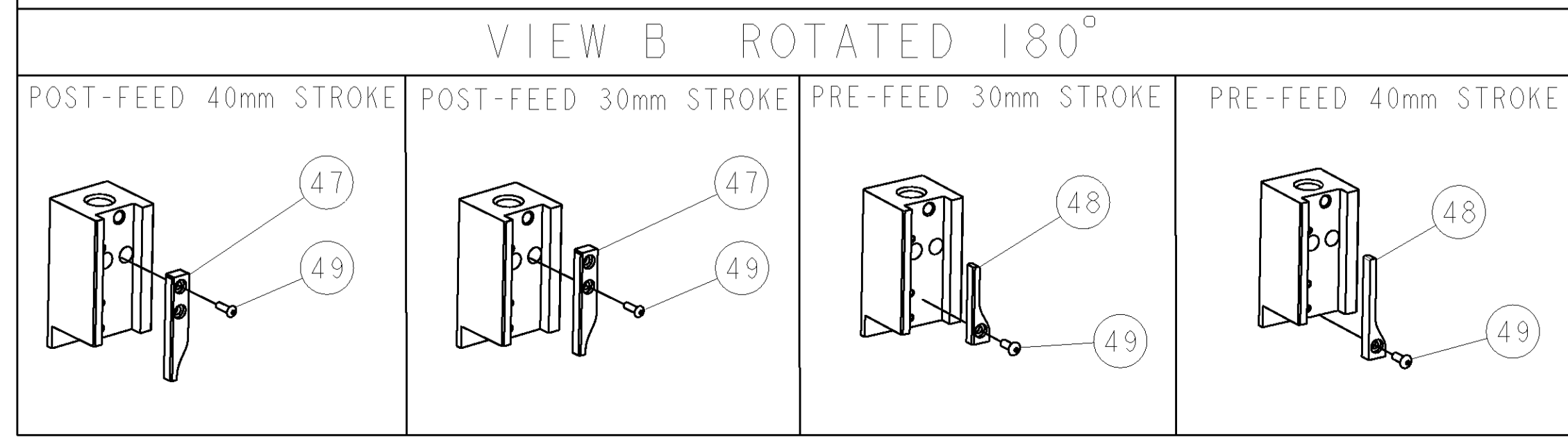


PART NUMBER	REV	TERMINATOR	FEED TYPE	DESCRIPTION
1528600-1	A	LEADMAKER	MECH POST FEED	CUTS CARRIER
1528600-2	A	BENCH	MECH PRE FEED	CUTS CARRIER
1528600-6	A	LEADMAKER	MECH POST FEED	CONTINUOUS CARRIER
7-1528600-1	A	LEADMAKER	MECH POST FEED	-1 AND SPARE PARTS
7-1528600-2	A	BENCH	MECH PRE FEED	-2 AND SPARE PARTS
7-1528600-6	A	LEADMAKER	MECH POST FEED	-6 AND SPARE PARTS
7-1528600-7	A	-	-	SPARE PARTS KIT

CRIMP DATA		DEUTSCH TERMINAL		DEUTSCH CRIMP SPEC	
TERMINAL NAME: DEUTSCH STAMPED CONTACT PIN/SOCKET					
CRIMP	SIZE	TYPE	RANGE		
WIRE	1.93 [0.076 IN]	F	0.50-1.00mm ² or 20-16 AWG		
INSUL	2.03 [0.080 IN]	O	1.40-2.30 [0.055-0.090 IN]		
WIRE STRIP LENGTH		APPL INSTRUCTIONS			
3.81-5.08 [1.50-2.00 IN]		408-8322 & 408-8490			
TERMINAL APPL SPEC		DEUTSCH 0425-203-0000		FEED 12.70 [0.500 IN]	
TERMINALS APPLIED					
TYCO PN	MFR PN	TYCO PN	MFR PN		
286503-4	1060-16-0622	286504-4	1062-16-0622		
286503-5	1060-16-0644	286504-5	1062-16-0644		
286503-6	1060-16-0688	286504-6	1062-16-0688		
WIRE SIZE	CRIMP HEIGHT	REF SETTING			
16 AWG	1.27 [0.050 IN]	C 1			
1.00 mm ²	1.27 [0.050 IN]	C 1			
18 AWG	1.24 [0.049 IN]	C 3			
0.75 mm ²	1.22 [0.048 IN]	C 4			
20 AWG	1.22 [0.048 IN]	C 4			
0.50 mm ²	1.14 [0.045 IN]	D 0			

- RECOMMENDED SPARE PARTS.
- 2. GREASE RAM, CAM, CAM FOLLOWER AND FEED ROD LIGHTLY.
- CERTAIN TERMINALS REQUIRE LUBRICATION. REFER TO THE APPLICATOR INSTRUCTION SHEET FOR MORE INFORMATION.
- 4. LUBRICATE DAILY PER THE APPLICATOR INSTRUCTION SHEET SUPPLIED WITH THE APPLICATOR.
- ASSEMBLE INSULATION CRIMPER ITEM 3 CRIMP PROFILE WITH RADIUS TOWARDS THE RAM.
- REFER TO DEUTSCH DRAWING 0425-203-0000 FOR CRIMP HEIGHT TOLERANCES.
- INSULATION CRIMP MAY NOT CONFORM TO THAT STATED IN RELEVANT APPLICATION SPECIFICATION.

* WARNING
ON INSTALLATION, SET WIRE DISC TO LARGEST WIRE SIZE SETTING. USE OF SETTINGS BELOW MIN. REQUIRED CRIMP HEIGHT SETTING WILL CAUSE DAMAGE TO CRIMP TOOLING.



LOC	DIST	REV	DATE	BY	APPD
A	66				

REVISIONS					
REV	DATE	BY	APPD	DESCRIPTION	ITEM NO
A	07FEB2006	LJL	MC	SEE ECO-06-002712	
-	-	-	-	-	73
-	-	-	-	-	72
-	-	-	-	-	71
-	-	-	-	-	70
-	-	-	-	-	69
-	-	-	-	-	68
-	-	-	-	-	67
-	-	-	-	-	66
-	-	-	-	-	65
-	-	-	-	-	64
-	-	-	-	-	63
-	-	-	-	-	62
-	-	-	-	-	61
-	-	-	-	-	60
-	-	-	-	-	59
-	-	-	-	-	58
-	-	-	-	-	57
-	-	-	-	-	56
-	-	-	-	-	55
-	-	-	-	-	54
-	-	-	-	-	53
-	-	-	-	-	52
-	-	-	-	-	51
-	-	-	-	-	50
-	-	-	-	-	49
-	-	-	-	-	48
-	-	-	-	-	47
-	-	-	-	-	46
-	-	-	-	-	45
-	-	-	-	-	44
-	-	-	-	-	43
-	-	-	-	-	42
-	-	-	-	-	41
-	-	-	-	-	40
-	-	-	-	-	39
-	-	-	-	-	38
-	-	-	-	-	37
-	-	-	-	-	36
-	-	-	-	-	35
-	-	-	-	-	34
-	-	-	-	-	33
-	-	-	-	-	32
-	-	-	-	-	31
-	-	-	-	-	30
-	-	-	-	-	29
-	-	-	-	-	28
-	-	-	-	-	27
-	-	-	-	-	26
-	-	-	-	-	25
-	-	-	-	-	24
-	-	-	-	-	23
-	-	-	-	-	22
-	-	-	-	-	21
-	-	-	-	-	20
-	-	-	-	-	19
-	-	-	-	-	18
-	-	-	-	-	17
-	-	-	-	-	16
-	-	-	-	-	15
-	-	-	-	-	14
-	-	-	-	-	13
-	-	-	-	-	12
-	-	-	-	-	11
-	-	-	-	-	10
-	-	-	-	-	9
-	-	-	-	-	8
-	-	-	-	-	7
-	-	-	-	-	6
-	-	-	-	-	5
-	-	-	-	-	4
-	-	-	-	-	3
-	-	-	-	-	2
-	-	-	-	-	1

PART NO	DESCRIPTION	ITEM NO							
-77	-76	-72	-71	-6	-2	-1	PART NO	DESCRIPTION	ITEM NO
-	-	-	-	-	-	-	-	-	84
-	-	-	-	-	-	-	-	-	83
-	-	-	-	-	-	-	-	-	82
-	-	-	-	-	-	-	-	-	81
-	-	-	-	-	-	-	-	-	80
-	-	-	-	-	-	-	-	-	79
-	-	-	-	-	-	-	-	-	78
-	-	-	-	-	-	-	-	-	77
-	-	-	-	-	-	-	-	-	76
-	-	-	-	-	-	-	-	-	75
-	-	-	-	-	-	-	-	-	74

DIMENSIONS: mm [IN]		TOLERANCES UNLESS OTHERWISE SPECIFIED:	
0 PLC	±	APVD	07-Feb-06
1 PLC	±	NAME	M. CLIFFORD
2 PLC	±	PRODUCT SPEC	
3 PLC	±	APPLICATION SPEC	
4 PLC	±	See Table	
ANGLES	±	WEIGHT	
MATERIAL		FINISH	
-		-	

DATE	07-Feb-06	BY	J. LOFTHOUSE
DATE	07-Feb-06	BY	M. CLIFFORD
CUSTOMER DRAWING		SCALE 3:5	

Tyco Electronics		Tyco Electronics Harrisburg, PA 17105-3608	
FINE ADJUST SIDE FEED HDI APPLICATOR			
SIZE	CAGE CODE	DRAWING NO	RESTRICTED TO
A1	00779	C-1528600	