



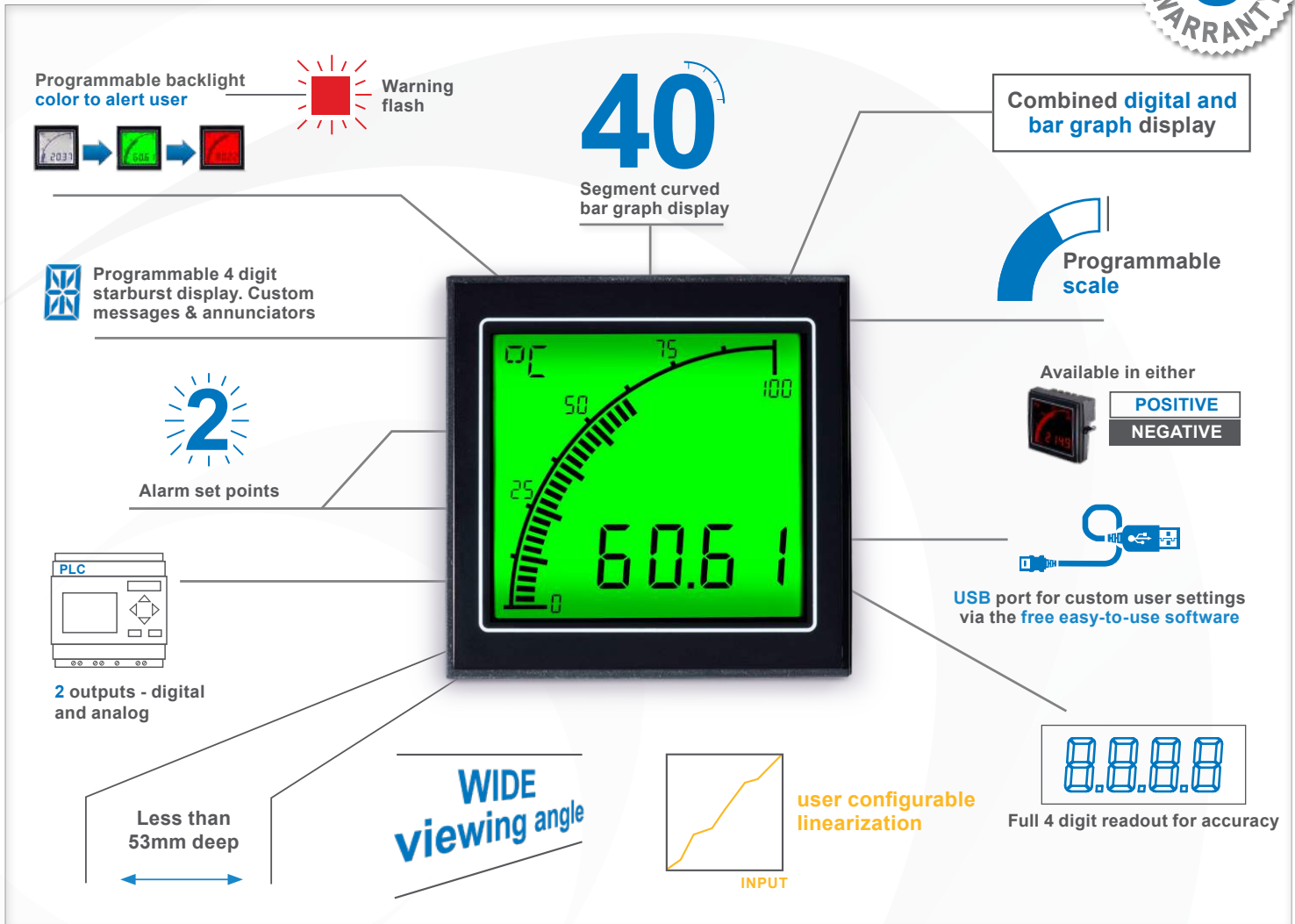
Temperature Meter

For use with Thermocouples

EVALUATION KIT AVAILABLE
Contact us to request yours



Easy to Use. Easy to Read.



Programmable backlight color to alert user
Warning flash

40
Segment curved bar graph display

Combined digital and bar graph display

Programmable 4 digit starburst display. Custom messages & annunciators

Programmable scale

Available in either
POSITIVE
NEGATIVE

Alarm set points

2

USB port for custom user settings via the free easy-to-use software

2 outputs - digital and analog

Less than 53mm deep

WIDE viewing angle

user configurable linearization

Full 4 digit readout for accuracy

INPUT

Featuring an acclaimed easy-to-read display and a versatile set of inputs, the Temperature Meter takes the APM into a wide range of new industrial applications.

The programmable scale and custom annunciators mean users can tailor the meter to display their critical parameters exactly how they want, while the dynamic backlighting, in conjunction with setpoints, means operators are visually alerted when a parameter is out of range. The two outputs can be used to control other systems in the process, meaning the APM Temperature Meter is much more than just a display.

Trumeter's innovative input signal optimization provides precise measurement, display and control. Designed for use with thermocouples, the Temperature meter allows the user to configure up to 20 points in a non-linear conversion table via the APM Configurator application in addition to the inbuilt thermocouple linearisation.

Key Features

Large multi-format display that incorporates:

- 40 segment bar graph display
- Large 4-digit display
- Separate Starburst display area for annunciators, custom messages and alarm information
- Dynamic backlight color

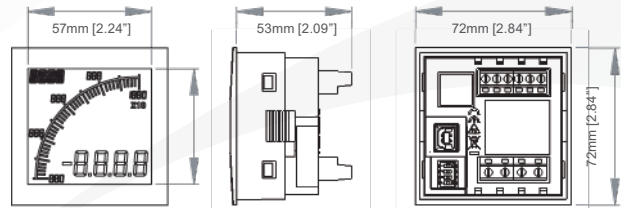
Programmable:

- Display Range (Both Min & Max Values)
- Custom annunciators
- User-selectable backlight color and intensity
- Two independent alarm set-points
- Two independent outputs
- 4-20mA analog retransmission output

Visibility:

- User-adjustable backlight brightness and color
- Large display
- Wide viewing angle (horizontal and vertical)
- Custom annunciators

Dimensions:



Panel cutout: 68mm x 68mm [2.68" x 2.68"] as per DIN43700/IEC61554

Thermocouple Type B, E, J, K, N, R, S and T
Accuracy 0.5°C after 30 min | 0.2°C after 40 min

ENVIRONMENTAL

Temperature - operating -10 to +60°C
Temperature - storage -40 to +70°C
IP rating (from the front) NEMA 4 & 12 (UL 50) with IP65

POWER SUPPLY

Nominal Input (AC or DC) 12-24V AC/DC
Max Power 1.6W
Frequency DC & 50-400 Hz

DISPLAY

Number of digits 4
Digit height 12mm [0.47"]
Number of message characters 4
Message character height 6mm [0.236"]
Backlight colors Red, Green, White
LCD display Positive or Negative

OUTPUTS

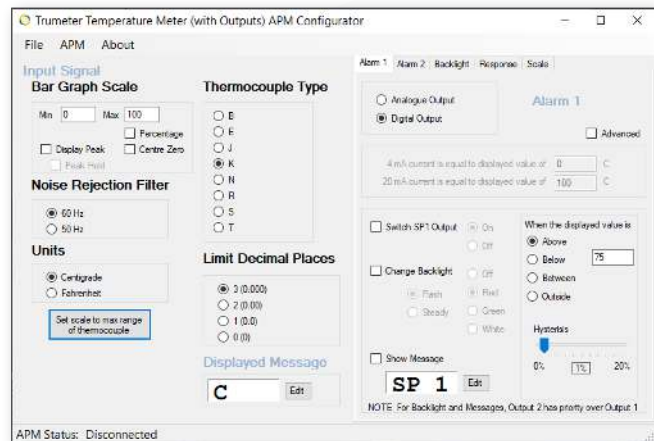
Max voltage 34V
Max current 500mA
Analog output 4-20mA

CERTIFICATION

UL and cUL, CE, UKCA

Easy To Use Software

Just plug into any USB port on your PC, run the freely available APM Configurator application and you're off. No drivers required.



Part Numbers:

Part	Description	By Request: Modbus connectivity
APM-TEMP-APO	APM TEMPERATURE METER, POSITIVE LCD WITH OUTPUTS	APM-TEMP-APS APM TEMPERATURE METER, POSITIVE LCD WITH MODBUS
APM-TEMP-ANO	APM TEMPERATURE METER, NEGATIVE LCD WITH OUTPUTS	APM-TEMP-ANS APM TEMPERATURE METER, NEGATIVE LCD WITH MODBUS
022128-01	USB Cable	
022150-01	APM Evaluation Kit	



Trumeter (The Americas)
6601 Lyons Rd, Suite H-7
Coconut Creek, Florida
FL 33073,
USA
Tel: +1 954 725 6699
Email: sales.usa@trumeter.com

Trumeter (Europe)
Pilot Mill
Alfred Street
Bury,
BL9 9JR
Tel: +44 161 674 0960
Email: sales.uk@trumeter.com

Asia Pacific Distributor
Innovative Design Technologies Sdn. Bhd
Lot 5881, Lorong Iks Bukit Minyak 1
Taman Perindustrian Iks, 14000 Bukit Tengah
Penang, Malaysia
Web: www.idtworld.com
Tel: + 604 5015700
Email: info@idtworld.com