

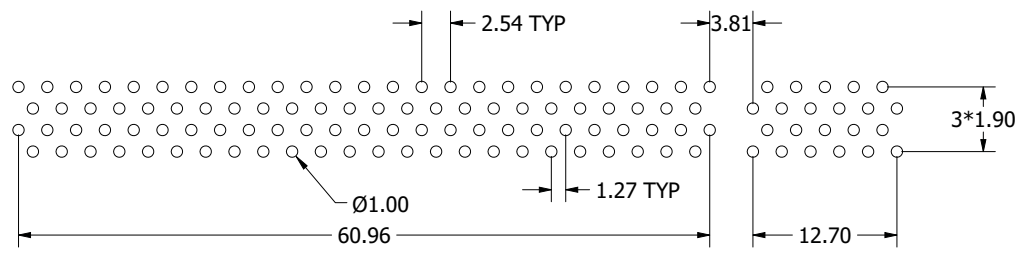
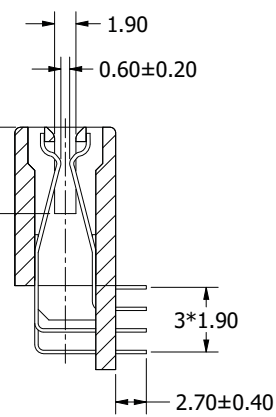
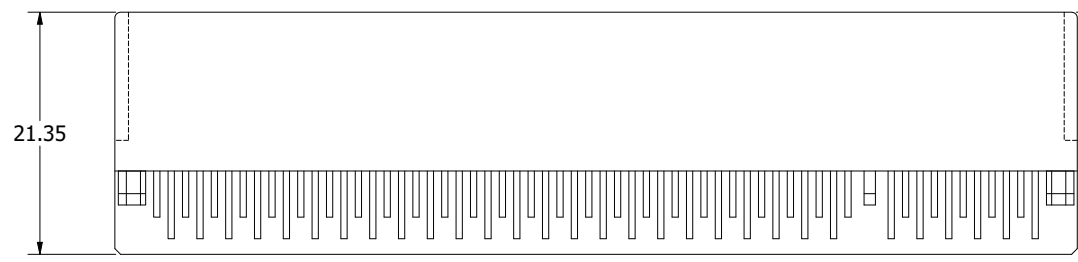
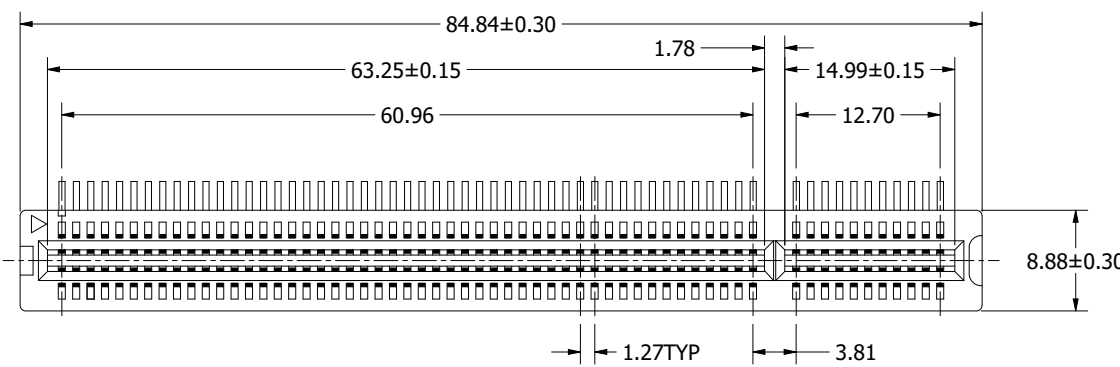
REVISIONS				
REV.	ECO. NO	DESCRIPTION	DATE	BY
A	---	INITIAL RELEASE	6/20/2000	JASON
B	2036	UPDATE KEY LOCATION & TITLE BLOCK, NEW DWG # WAS PR12005001	8/27/2009	JH

NOTES:  
MATERIAL  
INSULATOR: GLASS-REINFORCED THERMOPLASTIC.  
CONTACT: COPPER ALLOY.  
PLATING: MATING AREA - SELECTED GOLD OVER NICKEL.  
SOLDER AREA - TIN/LEAD OVER NICKEL.

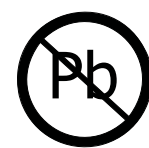
ELECTRICAL  
VOLATGE RATING: 250 VAC RMS.  
CURRENT RATING: 1 AMP.  
DIELECTRIC WITHSTANDING VOLTAGE: 500 VAC RMS 60Hz FOR 1 MINUTE.  
INSULATION RESISTANCE: 1000 MEGOHMS MIN AT 500 VDC.  
CONTACT RESISTANCE: 30 MILLIOHMS MAX AT 1 AMP DC.

MECHANICAL  
RETENTION FORCE: 460 GRAMS MIN PER CONTACT.  
INSERTION FORCE: 230 GRAMS MAX PER CONTACT PAIR.  
WITHDRAWAL FORCE: 15 GRAMS MIN PER CONTACT PAIR.

ENVIRONMENTAL  
TEMPERATURE RANGE: -55° C TO +85° C.



RECOMMENDED PCB LAYOUT (TOP VIEW)



RoHS COMPLIANT

UNLESS OTHERWISE SPECIFIED:  
DIMENSIONS ARE IN MM  
TOLERANCES:  
ANGULAR: ± 30°  
X= ± 0.30  
XX= ± 0.20  
XXX= ± 0.10  
SURFACE FINISH: 63 Ro  
REMOVE ALL BURRS AND SHARP EDGES .010 MAX

INTERPRET DIMENSIONS AND GEOMETRIC TOLERANCING PER: ANSI Y14.5M-1994

DRAWN	8/27/09	JH	DATE	NAME
THE INFORMATION HEREIN CONTAINS PROPRIETARY INFORMATION OF SULLINS ELECTRONICS AND IS NOT TO BE REPRODUCED, USED OR DISCLOSED TO OTHERS FOR ANY PURPOSE EXCEPT AS SPECIFICALLY AUTHORIZED IN WRITING BY AN OFFICER OF SULLINS ELECTRONICS.				
DESCRIPTION		SULLINS CONNECTOR SOLUTIONS		
PART NUMBER		PC1 .050" CC, 60P, RA		
PART NUMBER		TRWB060DKAN-T621		
SIZE	DWG. NO.	REV		
C	11392	B		
SCALE: 3:1		SHEET 1 OF 1		