

1 Package Contents

1.1 Confirm all components are enclosed



1. Star Bright
2. DC Plug Adaptor
3. AC Adaptor
4. USB Cable
5. Remote Controller
6. CD-ROM



CD-ROM contains Application software, Message samples, and Quick Start Guide (This document).

Note: AAA batteries not included.

2 Hardware setup

2.1 Insert Remote Controller batteries

To insert batteries remove the battery cover on the back and insert two AAA batteries as shown right. Direction of battery is also shown in the compartment.

Replace battery cover and press a button to check that the LED at the top left of the keyboard flashes.



2.2 Plug the DC Plug Adaptor into DC jacks



Note: Please do not connect or disconnect the DC Plug Adaptor while the power is on.

2.3 Plug in the AC Adaptor



Note: Please connect the AC Adaptor directly to the AC wall outlet for stable voltage.

2.4 Wait 5 seconds after applying power



Note: Please do not use the Remote Controller at this time.

2.5 Check for proper Remote Controller operation



To test the Remote Controller, press buttons '1' though 'F' on the Remote Controller to switch between the pre-loaded messages. The Remote Controller is considered working when messages switch via pushing different number keys.

Note: Wording of the display may vary.

2.6 Plug the USB Cable



Connect the USB Cable to the Star Bright's USB Port located on the back of the middle. Then connect the opposite end of the USB Cable to the available USB Port on your PC.

2.7 USB Installation



The display will automatically install **Printer** when the display is initially connected. The following pop ups shown on the left will appear when the display is recognized. **No driver software is required.**

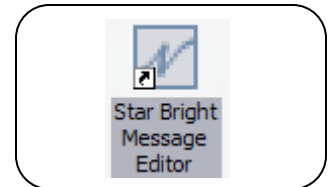


Check that the printer is installed as “Generic / Text Only”.

3 Software setup

3.1 Install Star Bright Message Editor from table of contents

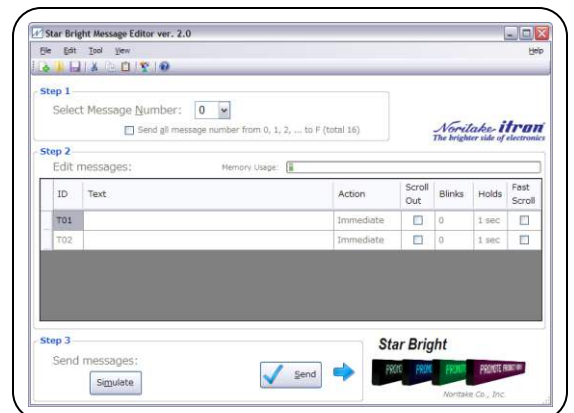
1. Insert enclosed CD-ROM.
2. The table of contents will show up automatically.
3. Click the **Star Bright Message Editor OPEN** icon.
4. Run installer program “**Star Bright Message Editor ver. 2.1.EXE**”.
5. Follow the instructions on the installer program.
6. When the installer is successfully completed, the Star Bright Message Editor shortcut will appear on your desktop.



3.2 Manual installation of Star Bright Message Editor

To manually install Star Bright Message Editor, please follow the instructions below:

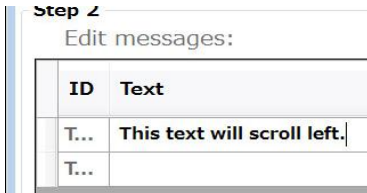
1. Open the **Software** folder in the CD-ROM.
2. Run **Star Bright Message Editor ver. 2.1.EXE**.
3. Follow the instructions.



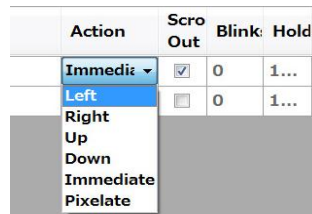
4 Create and send messages

4.1 Basic steps

Type text message



Add display action



Send the message

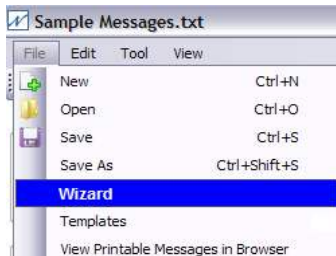


The new message will appear on the Star Bright

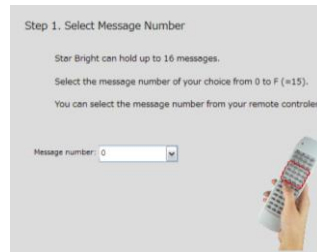


4.2 Using Wizard

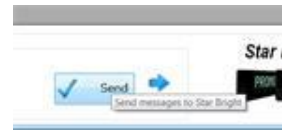
Select Wizard under File menu



Follow the instructions



Send the message



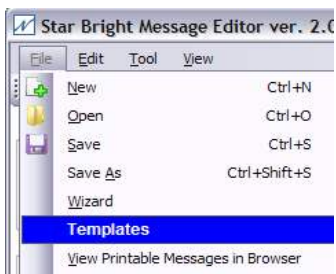
The new message will appear on the Star Bright



And add message text

4.3 Using Templates

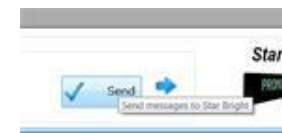
Select Templates under File menu



Edit sample messages

ID	Text
T01	This is a sample message on message #0
T02	Extra leg room seats available, please ask upgrade.
T03	International currency exchange in section Competitive rates!
T04	Please have your passport & boarding pas

Send the message



The new message will appear on the Star Bright



5 Contact

Please direct all inquires to Noritake Sales office below.

Or, go to online: http://www.noritake-elec.com/contact_us.htm

West Coast

Los Angeles Branch
21081 S. Western Ave. Ste 180
Torrance, CA 90501
Tel. (888) 795 - 3423

Midwest

Electronics Div. HQ
Chicago Branch
2635 Clearbrook Dr.
Arlington Heights, IL 60005
Tel. (800) 779 - 5846

East Coast

New Jersey Branch
15-22 Fair Lawn Ave.
Fair Lawn, NJ 07410
Tel. (888) 296 - 3423