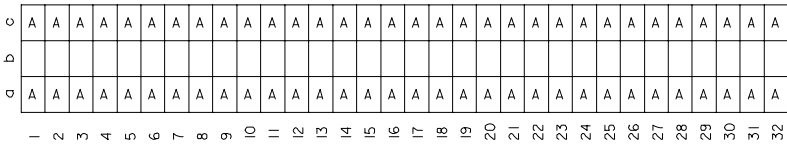


20 19 18 17 16 15 14 13 12 11 9 8 7 6 5 4 3 2 1

VIEW ON MATING SIDE



A = 64 STANDARD CONTACTS L = 2.9

MARKING	STANDARD
PERFORMANCE LEVEL	G2/0 = CONTACT AREA PERFORM. LEVEL 2 / TERMINATION TIN
FLUX PROOF	NO
FIXING CLIP	NO
DIMENSIONS	SD-85013-0001 SHT 1

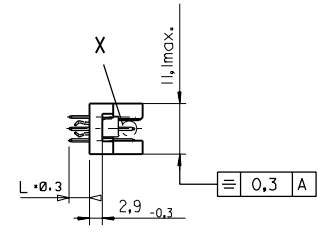
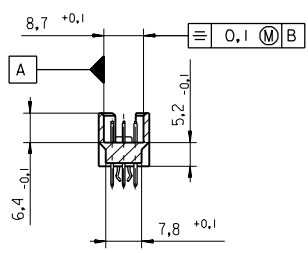
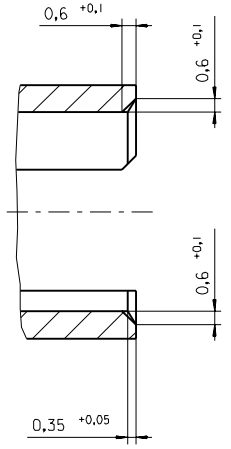
A	G2/0	a1-32	a1-32
CONTACT SYMBOL	PERFORMANCE LEVEL	CONTACT POSITION NUMBER	

EC NO. I 2004-XXXX DRAWN N.S. 31/03/04 CHK'd G.L. 31/03/04 APPR. G.L. 31/03/04	QUALITY SYMBOLS MAJOR CRITICAL	GENERAL TOLERANCES: (UNLESS SPECIFIED) 4 PLACES ± 0.1 mm $\pm .005$ INCH 3 PLACES ± 0.2 mm $\pm .008$ INCH 2 PLACES ± 0.3 mm $\pm .012$ INCH 1 PLACE ± 0.5 mm $\pm .020$ INCH	SCALE DESIGN UNITS <input checked="" type="checkbox"/> MM <input type="checkbox"/> INCH	THIRD ANGLE PROJECTION DIMENSIONS: <input type="checkbox"/> MM <input type="checkbox"/> INCH <input checked="" type="checkbox"/> INCH ONLY	SHEET NO. 1 OF 1 SIZE D	
	DRAWN BY & DATE N.S. 20/04/01	TITLE: 96 POS MALE CONNECTOR ACCORDING DIN 41612 STYLE R CONTACTS ARRANGEMENT		MOLEX INCORPORATED		
	CHECKED BY & DATE G.L. 20/04/01	APPROVED BY & DATE G.L. 20/04/01		CAD FILENAME S850131938.S01	MATERIAL NO. 85013-1938	DRAWING NO. SD-85013-1938
	DRAFT WHERE APPLICABLE MUST REMAIN WITHIN DIMENSIONS		THIS DRAWING CONTAINS INFORMATION THAT IS PROPRIETARY TO MOLEX INCORPORATED AND SHOULD NOT BE USED WITHOUT WRITTEN PERMISSION.			

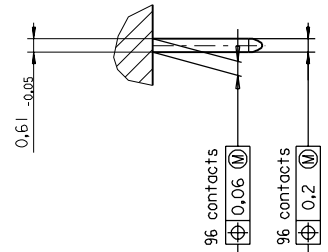
24-border.DGN REV A 96/06/12 LEVEL 6 19 18 17 16 15 14 13 12 11 10 9 8 7 6 5 4 3 2 1

PART NO.
DWG. NO.

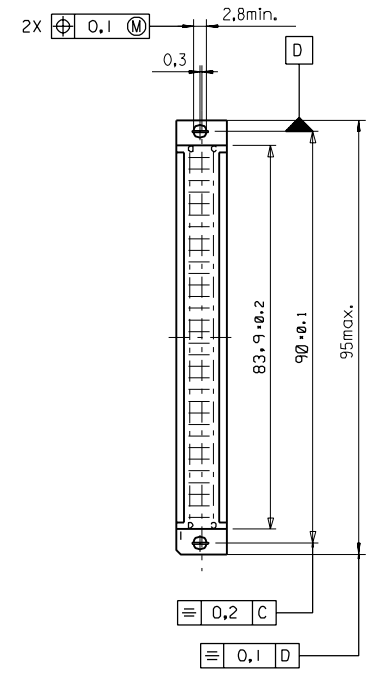
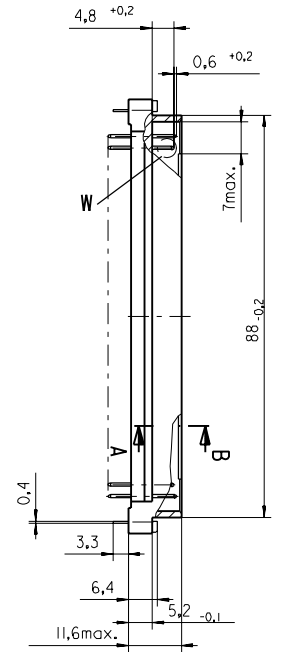
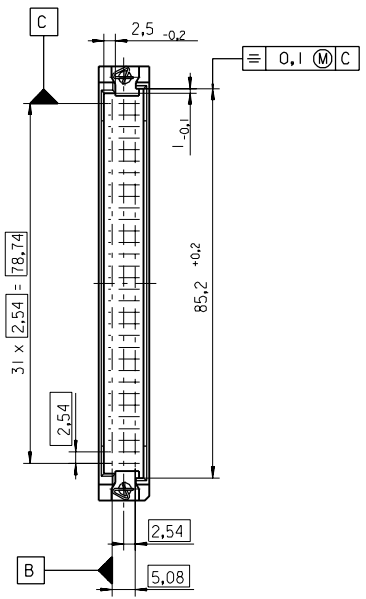
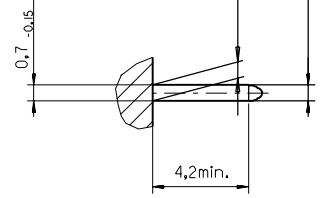
Section A - B
5:1



View X
5:1



View W
5:1



FIRST ANGLE PROJECTION		REVISE ONLY ON CAD SYSTEM		SH.	REV.
UNLESS OTHERWISE SPECIFIED TOLERANCES: ANGULAR ±2° INCH METRIC	3 PLACE ± . ±	DRWG BY	SIGN	CAD/CAM PROJECT NAME 85013000 611	
	2 PLACE ± . ±	CHK'D BY	SIGN	THIS DRAWING CONTAINS INFORMATION THAT IS PROPRIETARY TO MOLEX INC. & SHOULD NOT BE USED WITHOUT WRITTEN PERMISSION	
1 PLACE ± . ±	1 PLACE ± . ±	APP'D BY	SIGN	TITLE 96 pos. Male connector acc. DIN 41612 Style R Dimensions	
DRAFT WHERE APPLICABLE MUST REMAIN WITHIN DIMENSIONS		SCALE		SHEET NO. DATE 1 OF 95/06/07	
DESIGN DIMENSION <input checked="" type="checkbox"/> MM <input type="checkbox"/> IN.		SCALE		MOLEX MOLEX EUROPE	
EQUIVALENT DIMENSION <input type="checkbox"/> MM <input type="checkbox"/> IN.		SCALE		PART NO. DWG NO. SIZE	
IF TWO DIMENSIONS ARE SHOWN THE UPPER IS THE DESIGN DIMENSION, LOWER IS SECONDARY		: 1		SDA-85013-0001 B	

first release
see ECN No. 1887

LTR REVISIONS
FOR PREVIOUS REVISIONS SEE MRI LIST

3 PLACE ± . ±	±
2 PLACE ± . ±	±
1 PLACE ± . ±	±

Ca
KN
: 1

96 pos. Male connector
acc. DIN 41612 Style R
Dimensions

VIEW ON MATING SIDE

∩	A	A	A	A	A	A	A	A	A	A	A	A	A	A	A	A	A	A	A	A	A	A
∞																						
<	A	A	A	A	A	A	A	A	A	A	A	A	A	A	A	A	A	A	A	A	A	A

1 2 3 4 5 6 7 8 9 10 11 12 13 14 15 16 17 18 19 20 21 22 23 24 25 26 27 28 29 30 31 32 33 34 35 36 37 38 39 40 41 42 43 44 45 46 47 48 49 50 51 52 53 54 55 56 57 58 59 60 61 62 63 64 65 66 67 68 69 70 71 72 73 74 75 76 77 78 79 80 81 82 83 84 85 86 87 88 89 90 91 92 93 94 95 96 97 98 99 100

A = 64 STANDARD CONTACTS L-2,9

Marking	Standard
Performance level	G2/0 = Contact area perform. level2 / Termination tin
Flux proof	no
Fixing clip	no
Dimensions	SDA-85013-0001 sht.1
Technical Data	PS-85013-0001

A	G2/0	a1-32	c1-32
Contact symbol	Perform. level	Contact position number	

first release see ECN No. 1868	FOR PREVIOUS REVISIONS SEE MRI LIST			LTR REVISIONS	
	REVISIONS				
CAD/CAM PROJECT NAME SB8501319 S31	DRWG BY Cc	SIGN CHK'D BY KN	SIGN APP'D BY SCALE	SHEET NO. DATE 1 OF 1 95/06/06 DWG NO. SDA-85013-1938	SH. REV. SIZE A
TITLE 96 pos. Male connector acc. DIN 41612 style R contacts arrangement		THIS DRAWING CONTAINS INFORMATION THAT IS PROPRIETARY TO MOLEX INC. & SHOULD NOT BE USED WITHOUT WRITTEN PERMISSION			
MOLEX EUROPE		85013-1938			
PART NO.		DWG NO.			SIZE
A		SDA-85013-1938			A