

# Customer Information Sheet

DRAWING No.: S9321-45R

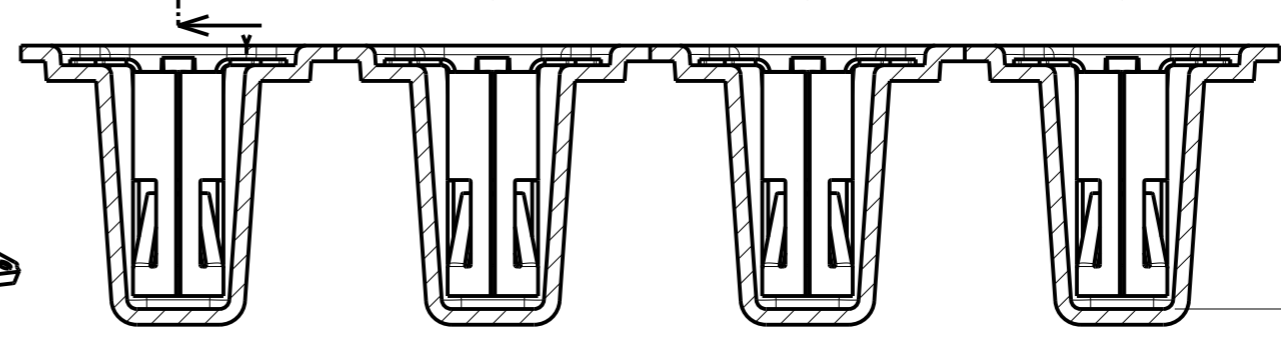
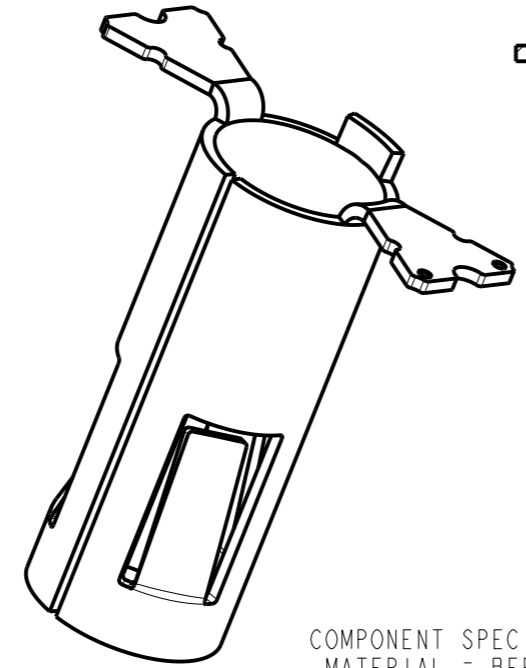
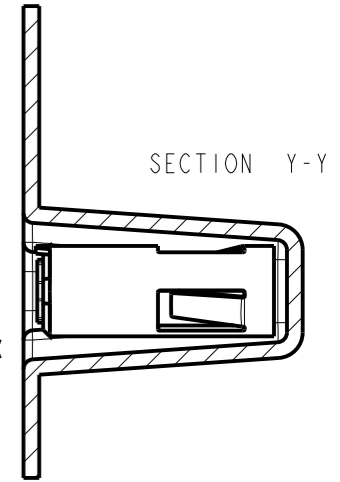
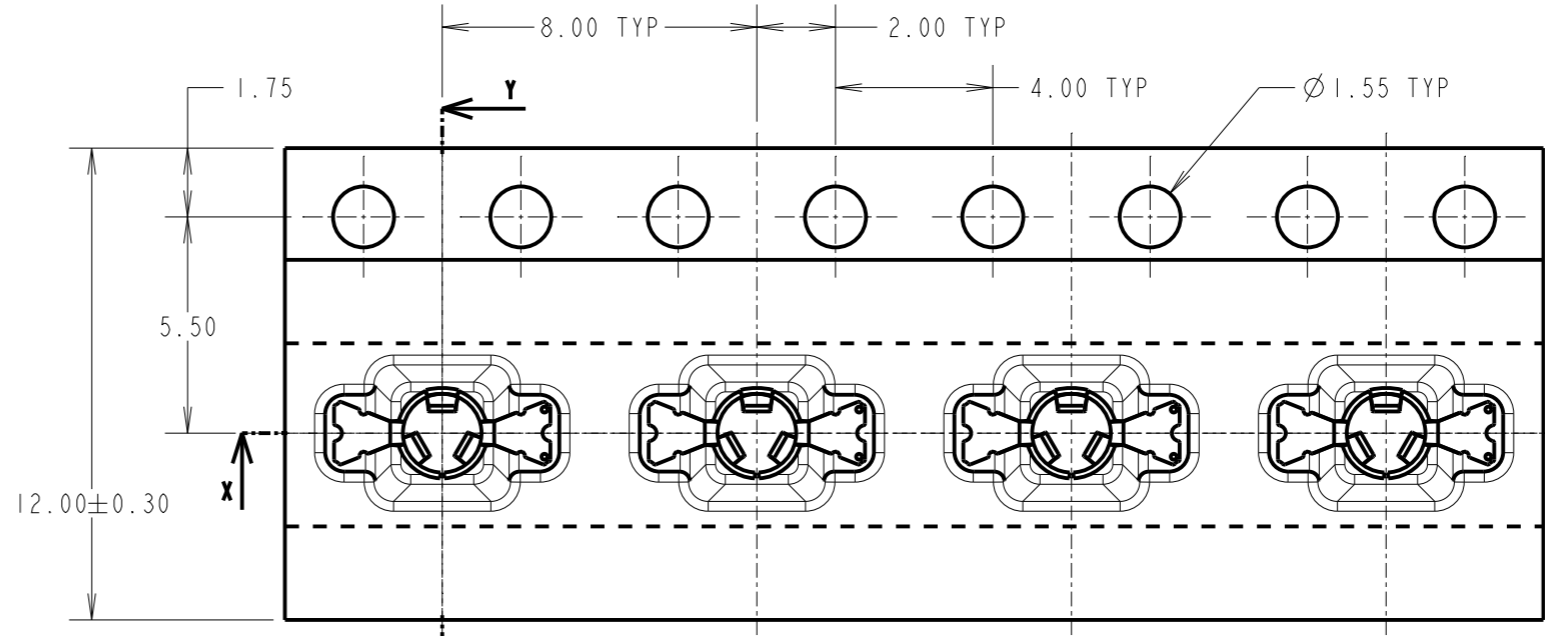
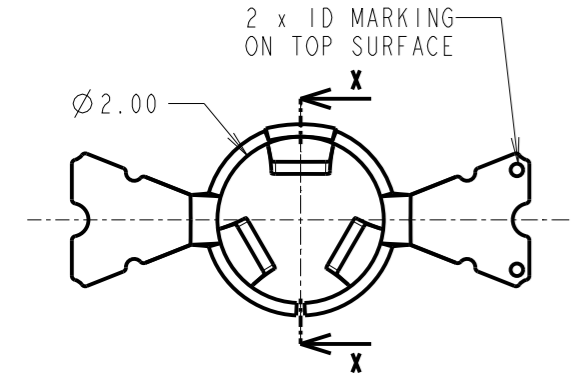
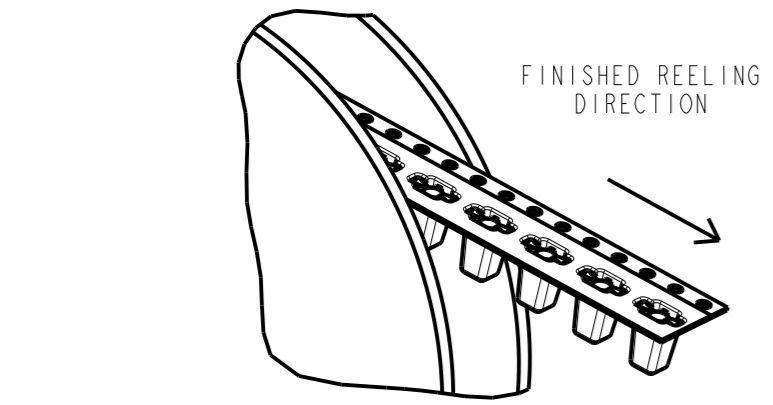
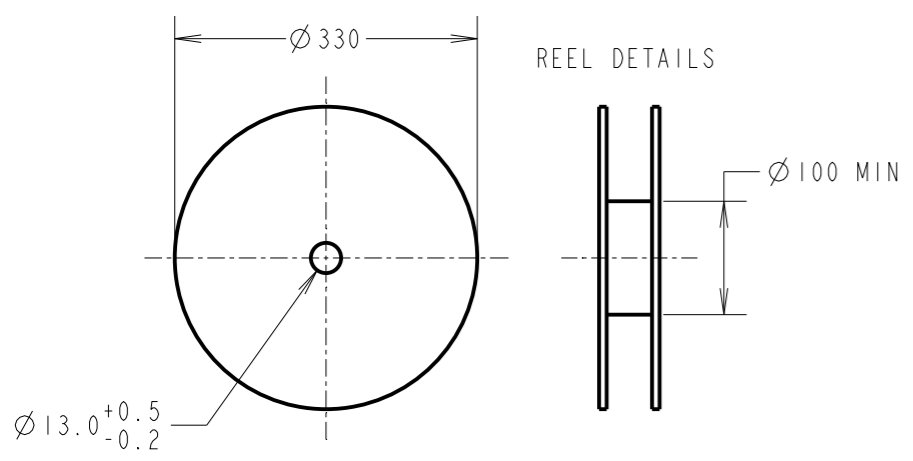
IF IN DOUBT - ASK

©

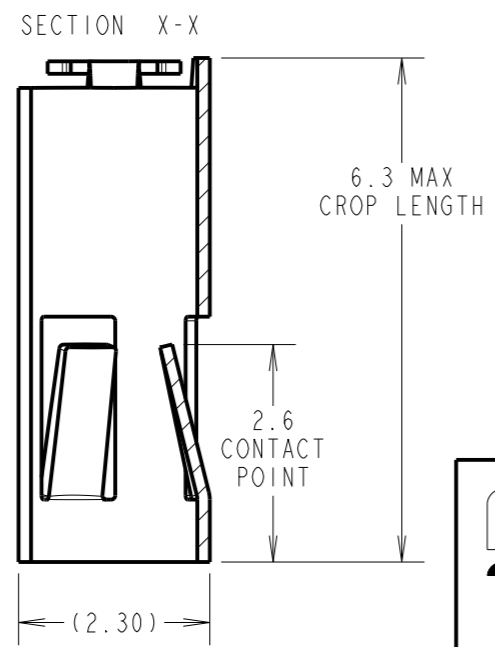
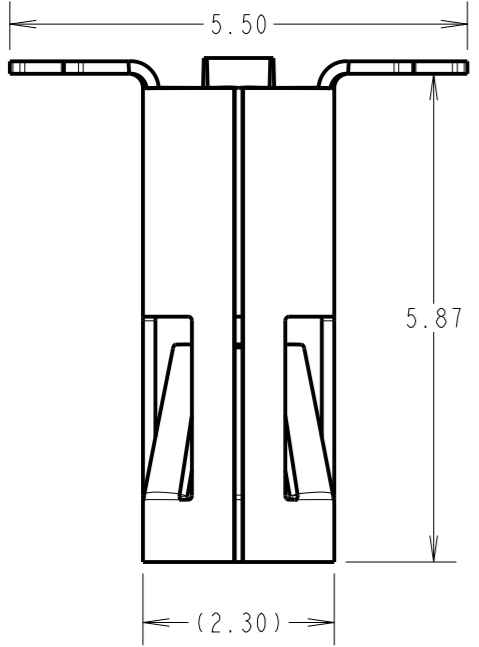
NOT TO SCALE

THIRD ANGLE PROJECTION

ALL DIMENSIONS IN mm



6.70



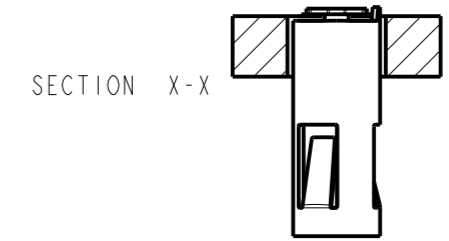
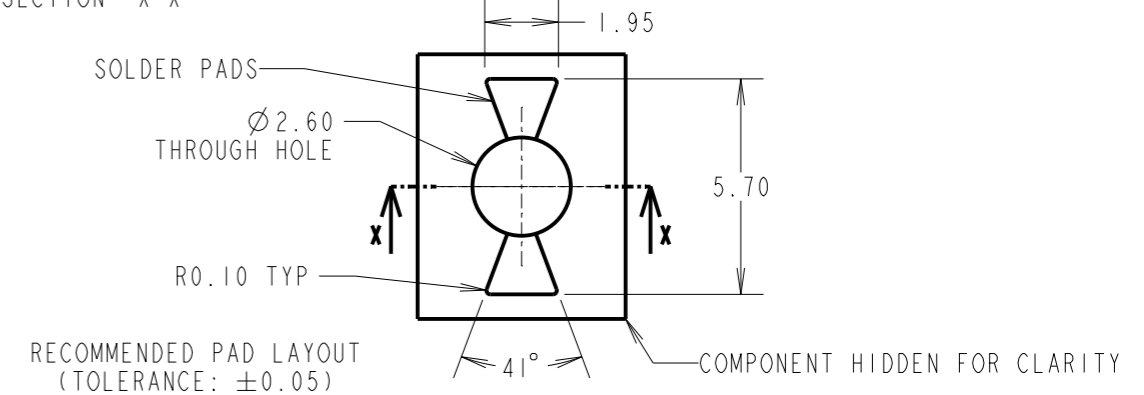
COMPONENT SPECIFICATION (TBC):  
 MATERIAL = BERYLLIUM COPPER  
 FINISH = 0.10µm - 0.17µm GOLD OVER  
 1.0µm MIN NICKEL

ELECTRICAL:  
 CURRENT RATING = 8A  
 CONTACT RESISTANCE = 15mΩ MAX

MECHANICAL:  
 MAX INSERTION FORCE:  
 Ø 1.50mm PIN = 3.5N  
 Ø 1.90mm PIN = 17.0N  
 MIN WITHDRAWAL FORCE:  
 Ø 1.50mm PIN = 0.5N  
 Ø 1.90mm PIN = 1.0N

DURABILITY = 500 CYCLES  
 ENVIRONMENTAL:  
 OPERATING TEMPERATURE = -50°C TO +125°C

SECTION X-X



NOTES:  
 1. QUANTITY OF COMPONENTS PER REEL = 950.  
 2. THIS PRODUCT IS TAPED AND REELED IN GENERAL ACCORDANCE WITH EIA-481-2 (ELECTRONICS INDUSTRIES ASSOCIATION).

RTP	1	09.11.21	31205
NAME	ISS.	DATE	CN/CO
APPROVED:		R.ALEXANDER	
CHECKED:		S.BENNETT	
DRAWN:		R.PORTLOCK	
CUSTOMER REF.:			
ASSEMBLY DRG:			

**HARWIN**

www.harwin.com  
 technical@harwin.com

THIS DRAWING AND ANY INFORMATION OR DESCRIPTIVE MATTER SET OUT HEREON ARE CONFIDENTIAL AND COPYRIGHT PROPERTY OF THE HARWIN GROUP AND MUST NOT BE DISCLOSED, LOANED, COPIED OR USED FOR MANUFACTURING, TENDERING OR FOR ANY OTHER PURPOSE WITHOUT THEIR WRITTEN PERMISSION.

TOLERANCES  
 X. = ±1mm  
 X.X = ±0.50mm  
 X.XX = ±0.20mm  
 X.XXX = ±0.01mm  
 ANGLES = ±5°  
 UNLESS STATED

MATERIAL:  
 SEE ABOVE  
 FINISH: SEE ABOVE  
 S/AREA: mm<sup>2</sup>

TITLE: SYCAMORE CONTACT  
 Ø 1.50mm BOTTOM ENTRY SOCKET  
 IN TAPE & REEL - 5.87mm  
 DRAWING NUMBER: **S9321-45R**  
 SHT 2 OF 2