

LK series Keylock Switches

Distinctive features and specifications

LK_U1807US



- Single and double pole options
- Up to four positions
- Momentary and maintained switching
- Multiple key pull position options
- 45° or 90° indexing

ELECTRICAL SPECIFICATIONS

- Contact rating : 4A at 125 VAC or 28VDC, 2A at 250 VAC
- Contact resistance : $\leq 10 \text{ m}\Omega$
- Insulation resistance : $\geq 109 \text{ M}\Omega$
- Dielectric strength : 1000 V RMS minimum at sea level
- Electrical life : 6000 cycles at full load

GENERAL SPECIFICATIONS

- Mechanical life : 6000 cycles at full load.
- Operating temperature range : -30°C to $+85^{\circ}\text{C}$

MATERIALS

- Lock housing : Zinc alloy die casted, nickel plated
- Cylinder : 4 disc tumbler, zinc alloy die casted, nickel plated
- Keys : 2 single bitted keys, brass nickel plated
- Contacts & terminals : Gold plated copper alloy
- Body : Glass filled polyester

AGENCY APPROVALS



Dimensions : first dimensions are in mm while inches are shown in brackets.
Refer to the following pages for further information.



Mounting accessories : Standard hardware supplied : 1 nut.
For spare keys please contact APEM.

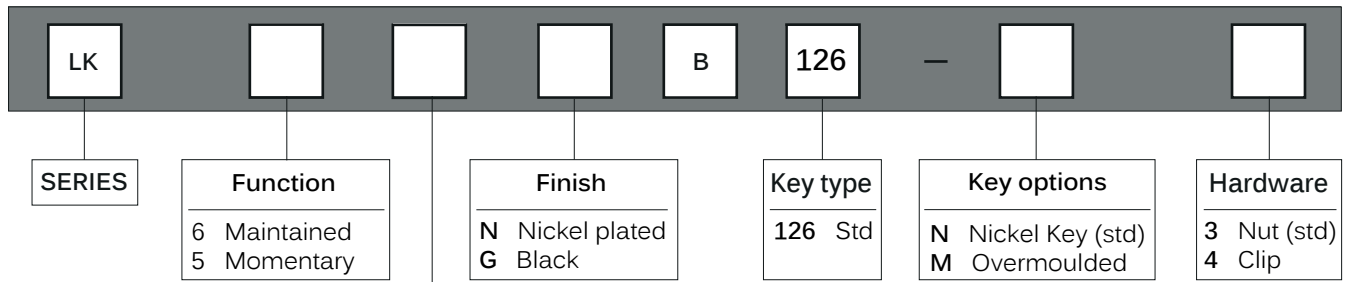


Packaging unit : 25

LK series

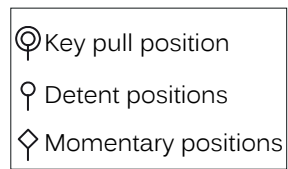
Keylock Switches

Overview



| Maintained function | No of Poles | Lock Configuration | Indexing | Terminals Connected | | | | Key Pull Position |
|---------------------|-------------|--------------------|----------|---------------------|----------|----------|--------|-------------------|
| | | | | Pos. 1 | Pos. 2 | Pos. 3 | Pos. 4 | |
| A | SP | | 45° | 8-1 | 1-2 | 2-3 | — | 1 |
| B (std) | DP | | | 8-1, 4-5 | 1-2, 5-6 | 2-3, 6-7 | — | |
| C | SP | | 45° | 8-1 | 1-2 | 2-3 | — | 3 |
| D (std) | DP | | | 8-1, 4-5 | 1-2, 5-6 | 2-3, 6-7 | — | |
| E | SP | | 45° | 8-1 | 1-2 | 2-3 | — | 1 & 3 |
| F (std) | DP | | | 8-1, 4-5 | 1-2, 5-6 | 2-3, 6-7 | — | |
| G | SP | | 45° | 8-1 | 1-2 | 7-8 | — | 1 |
| H (std) | DP | | | 8-1, 4-5 | 1-2, 5-6 | 7-8, 3-4 | — | |
| 7 | SP | | 45° | 8-1 | 1-2 | 7-8 | — | 1, 2 & 3 |
| J (std) | DP | | | 8-1, 4-5 | 1-2, 5-6 | 7-8, 3-4 | — | |
| N | SP | | 90° | 8-1 | 1-3 | — | — | 1 |
| 8 (std) | DP | | | 8-1, 4-5 | 1-3, 5-7 | — | — | |
| P | SP | | 90° | 8-1 | 1-3 | — | — | 2 |
| Q (std) | DP | | | 8-1, 4-5 | 1-3, 5-7 | — | — | |
| R | SP | | 90° | 8-1 | 1-3 | — | — | 1 & 2 |
| S (std) | DP | | | 8-1, 4-5 | 1-3, 5-7 | — | — | |
| 9 | DP | | 45° | 8-1 | 1-2 | 2-3 | 3-4 | 1, 2, 3 & 4 |

| Momentary function | No of Poles | Lock Configuration | Indexing | Terminals Connected | | | | Key Pull Position |
|--------------------|-------------|--------------------|----------|---------------------|----------|----------|--------|-------------------|
| | | | | Pos. 1 | Pos. 2 | Pos. 3 | Pos. 4 | |
| A (std) | SP | | 45° | 8-1 | 1-2 | — | — | 1 |
| B | DP | | | 8-1, 4-5 | 1-2, 5-6 | — | — | |
| E (std) | SP | | 45° | 8-1 | 1-2 | 7-8 | — | 1 |
| F | DP | | | 8-1, 4-5 | 1-2, 5-6 | 7-8, 3-4 | — | |
| G | SP | | 45°/90° | 7-1 | 1-2 | 6-7 | — | 1 & 3 |
| 7 (std) | SP | | 45° | 8-1 | 1-2 | 7-8 | — | 1 |
| J | DP | | | 8-1, 4-5 | 1-2, 5-6 | 7-8, 3-4 | — | |



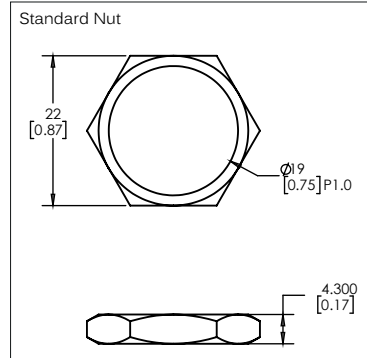
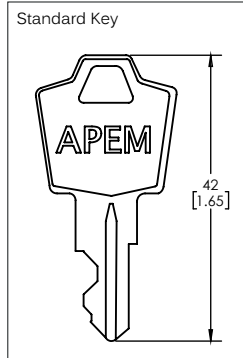
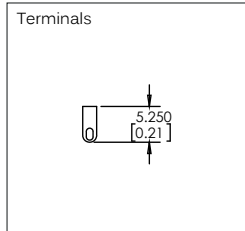
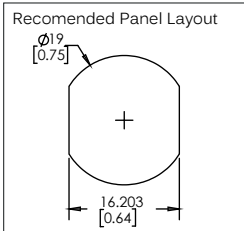
LK series Keylock Switches

Panel cut-out Ø19 (0.755)

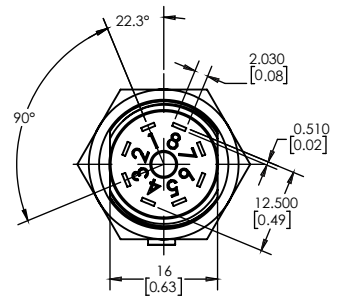
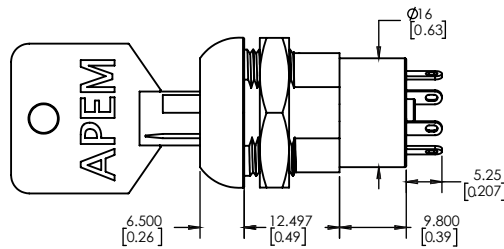
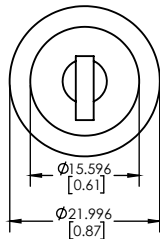
MODEL
STRUCTURE



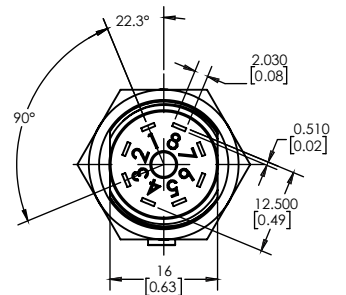
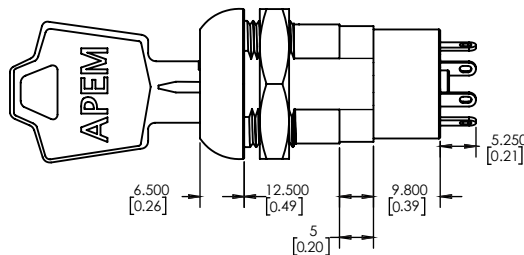
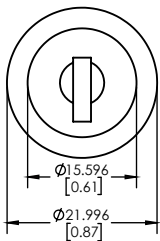
- 2, 3 and 4 position configuration
- Maintained and momentary functions
- Standard and overmoulded key
- Nut or clip fixing



Maintained



Momentary



OPTIONS

Overmoulded Key

