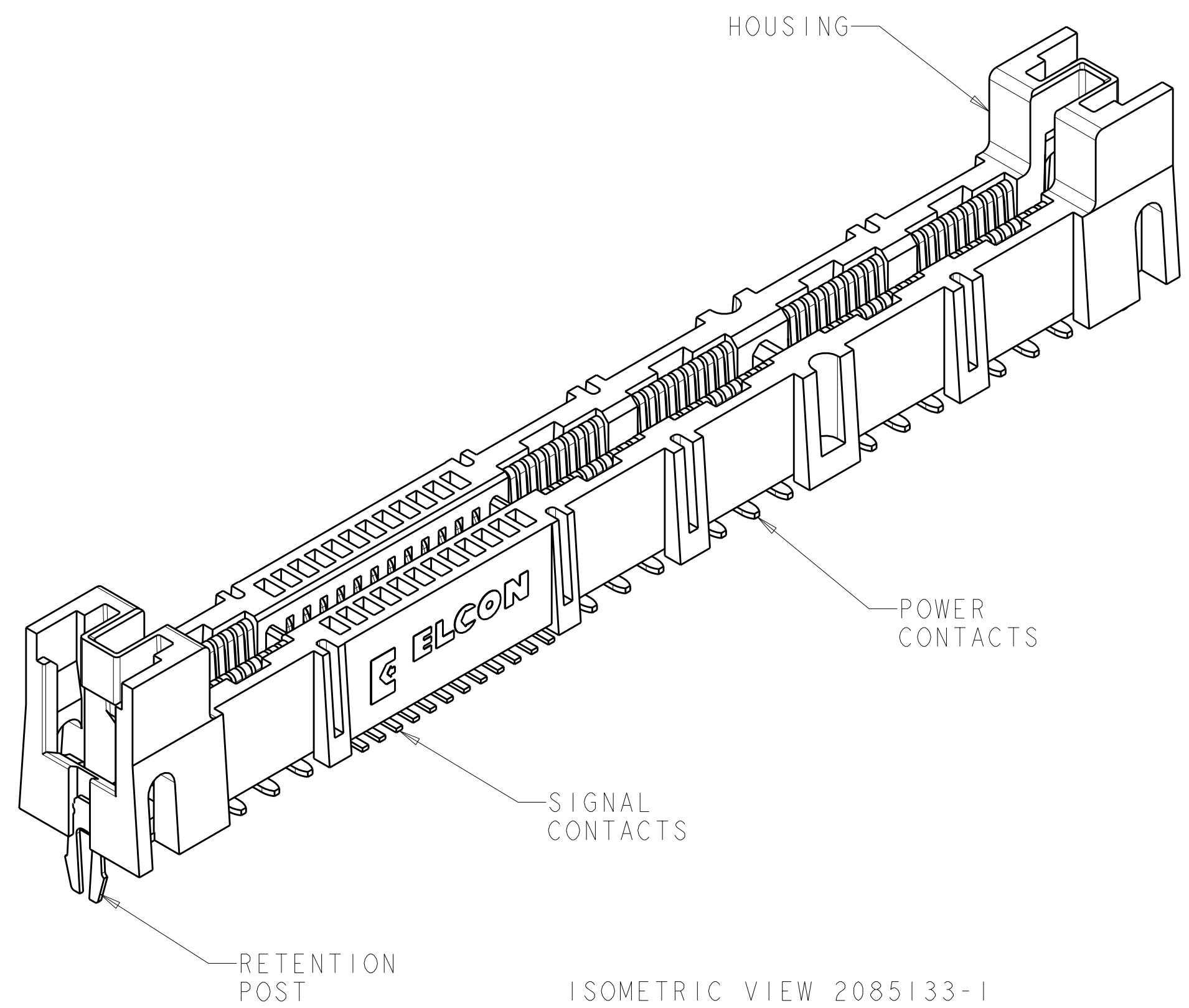


LOC	DIST	REVISIONS			
GP	00	REV	DATE	BY	APPD
		A	RELEASED	24FEB2009	RG PD



ISOMETRIC VIEW 2085133-1
SCALE 4:1

1. PART NUMBER CHANGES AND OR DESIGN CHANGES AFFECTING ITEM INTERCHANGEABILITY REQUIRE PRIOR TYCO ELECTRONICS APPROVAL AND AUTHORIZATION BY REVISION TO THIS DRAWING.

2. MATERIAL:
 HOUSING: GLASS FILLED POLYESTER, COLOR-BLACK
 UL94V-0 FLAMMABILITY RATED
 CONTACTS: COPPER ALLOY
 RETENTION POST: COPPER ALLOY

3. FINISH:
 SIGNAL CONTACTS:
 MATING AREA-0.76µm MIN GOLD OVER 3.81µm MIN NICKEL
 0.64µm MIN NICKEL PLATE OVER REMAINDER
 SMT TAILS-3.81µm MIN MATTE TIN OVER NICKEL PLATE
 POWER CONTACTS:
 1.27µm MIN NICKEL PLATE ALL OVER
 MATING AREA-0.76µm MIN GOLD OVER NICKEL PLATE
 SMT TAILS-3.05µm MIN TIN OVER NICKEL PLATE
 RETENTION POSTS:
 3.05µm MIN MATTE TIN OVER 0.63µm MIN NICKEL

4. ITEMS PROVIDED TO THIS SPECIFICATION TO BE PERMANENTLY IDENTIFIED WITH PART NUMBER AND DATE CODE.

5. MAXIMUM BURR OF 0.013 ON CARD TAB AREA.

6. SET TRACE BACK FROM PC BOARD EDGE. NO SOLDERMASK ALLOWED BETWEEN PC BOARD EDGE AND TRACE.

7. CONNECTOR ACCEPTS 1.57±0.13 THICK PC BOARD.

8. KEEP OUT AREA FOR COMPONENTS ONLY.

9. RECOMMENDED GOLD FINGER LENGTH FOR RELIABLE CONTACT.

10. DATUMS AND BASIC DIMENSIONS ESTABLISHED BY CUSTOMER.

11. FOR DESIGN OBJECTIVES SEE 108-2301.

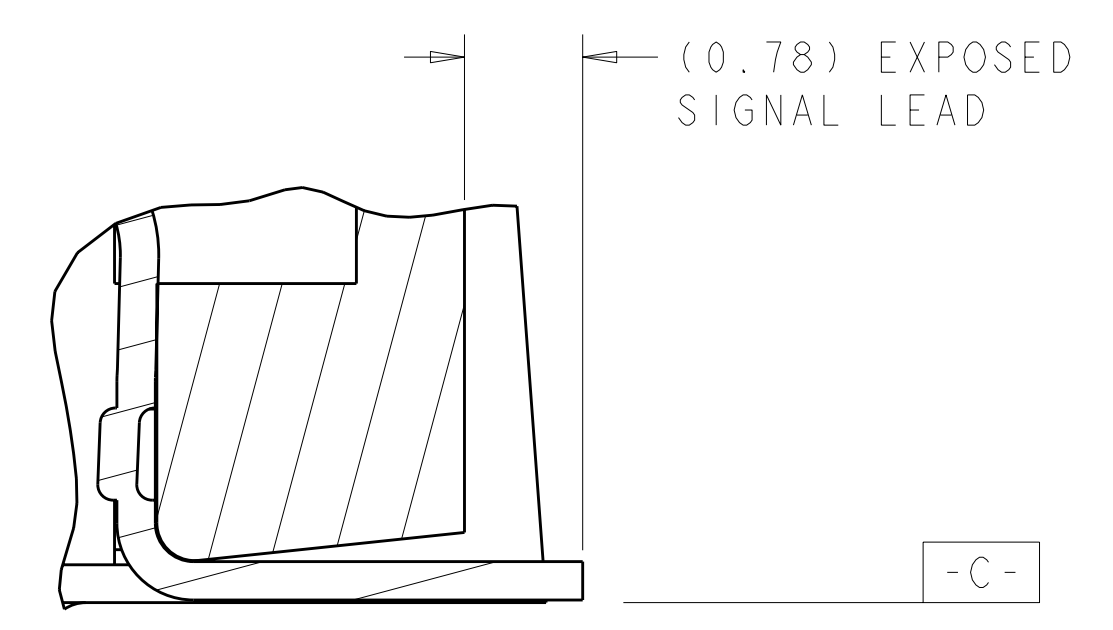
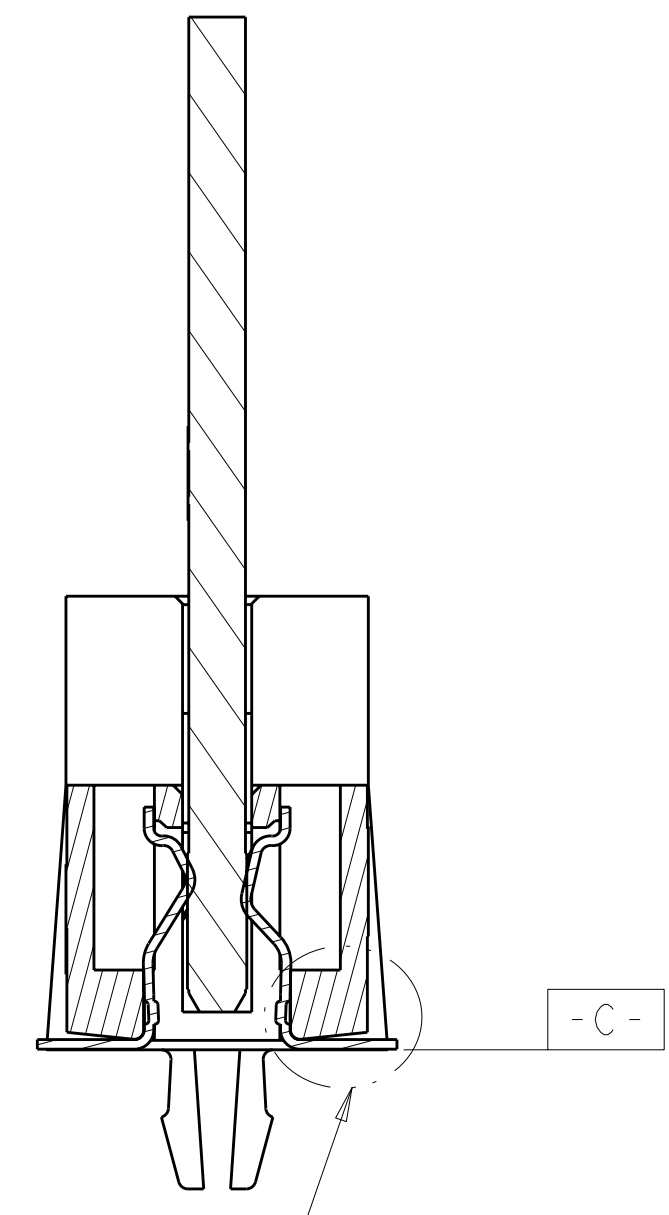
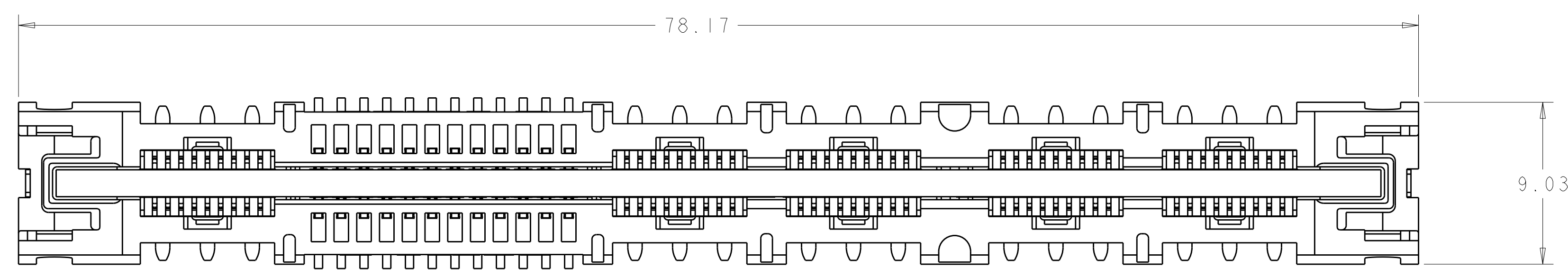
12. THIS PRODUCT HAS NOT PASSED QUALIFICATION TESTING.

2.92-3.55	4.61	2085133-3
2.29-2.92	4.19	2085133-2
≤ 1.57	3.68	2085133-1
BOARD THICKNESS RANGE	DIM. "A"	PART NUMBER

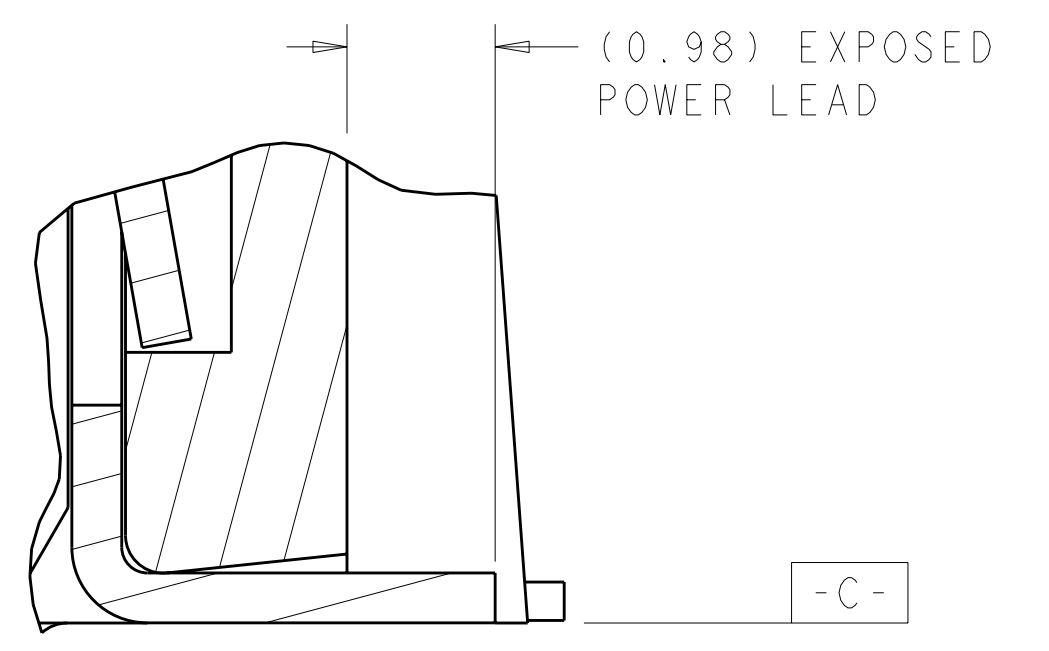
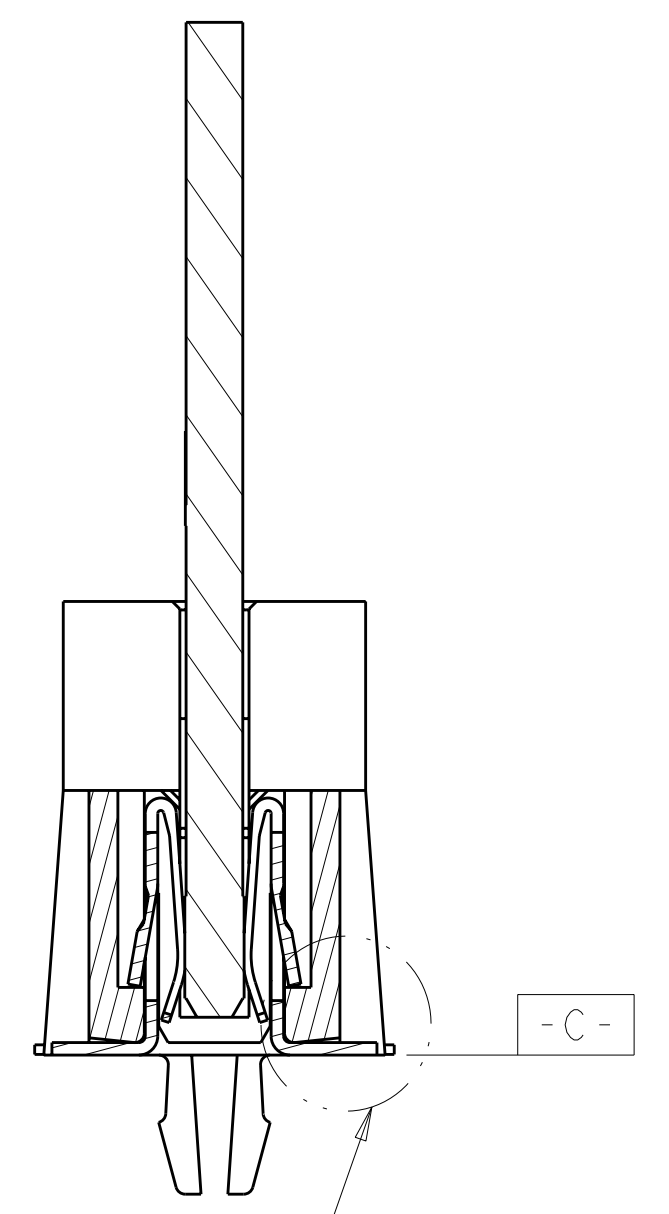
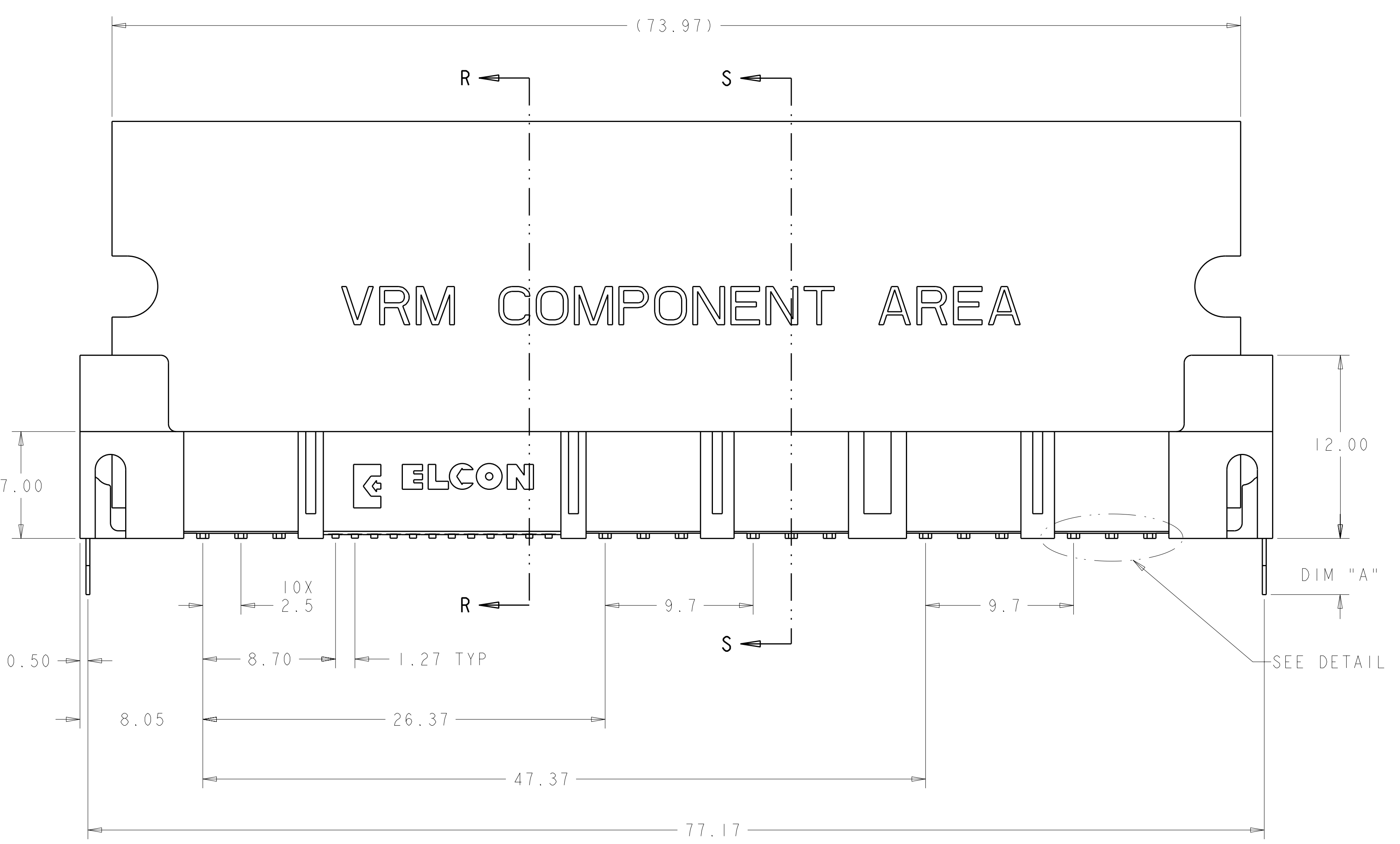
DIMENSIONS:		TOLERANCES UNLESS OTHERWISE SPECIFIED:		MATERIAL:		FINISH:	
mm	9 PLC ±.5	9 PLC ±.5	5 PLC ±.25	2	3		
	2 PLC ±.5	5 PLC ±.25	4 PLC ±.2				
	4 PLC ±.2						
DIMENSIONS: 9 PLC ±.5, 2 PLC ±.5, 5 PLC ±.25, 4 PLC ±.2 TOLERANCES UNLESS OTHERWISE SPECIFIED: ±.5, ±.25, ±.2 MATERIAL: 2, 3 FINISH: 3				DWN: R. GRZYBOWSKI 30JAN2009 CHK: P. D'AMATO 30JAN2009 APVD: M. PERCHERIE 30JAN2009 NAME: SOCKET CONNECTOR, SMT P2-S24-P8 MINI CROWN EDGE SIZE: A 00779 C=2085133 SCALE: 5:1 SHEET 1 OF 4 REV A			

LOC	DIST	REV	DATE	BY	APPD
GP	00				

REVISIONS			
NO.	DESCRIPTION	DATE	BY
1	SEE SHEET 1		



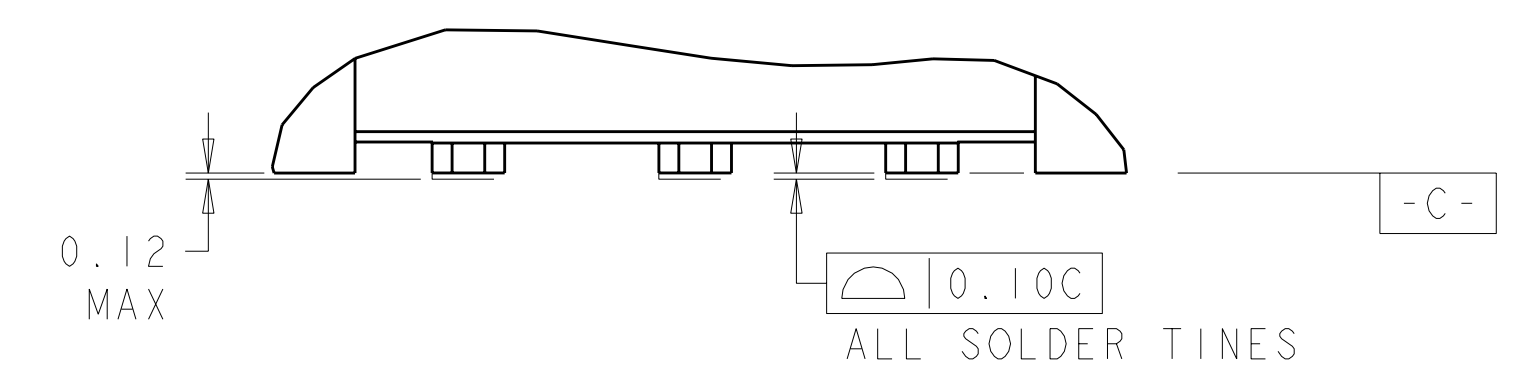
DETAIL H
SCALE 20:1



DETAIL G
SCALE 20:1

SEE DETAIL G

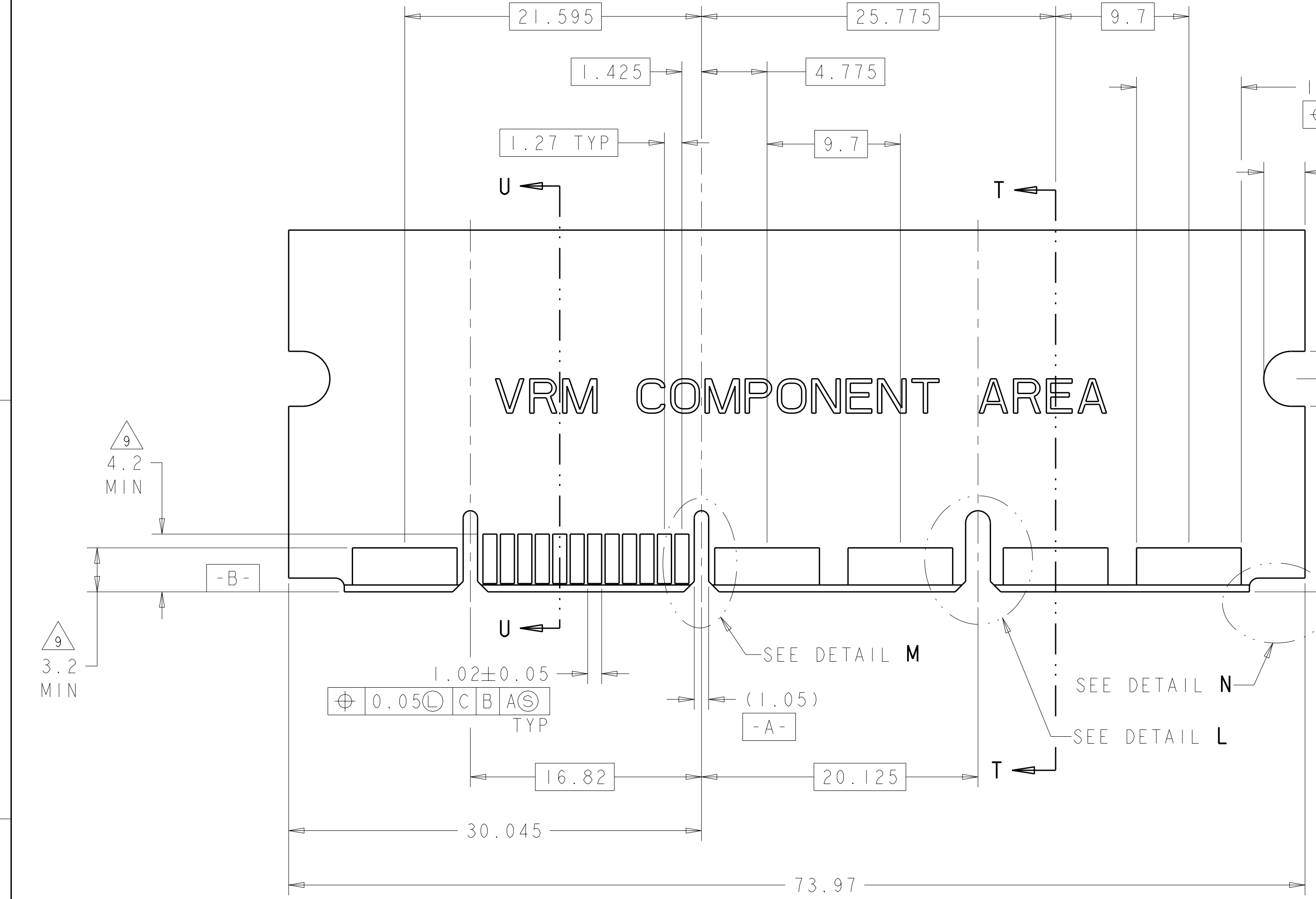
SECTION S-S



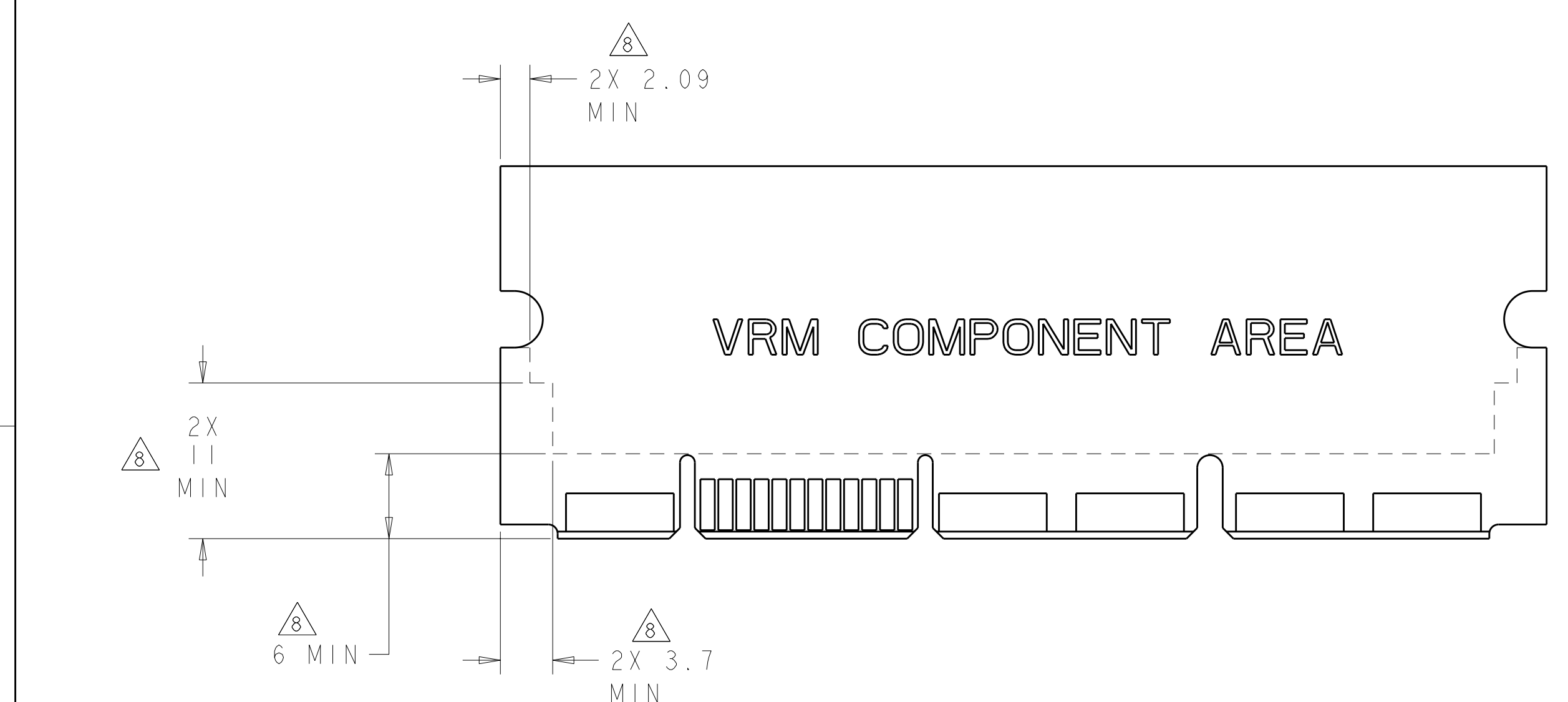
DETAIL Z
SCALE 12:1

DIMENSIONS: mm 		TOLERANCES UNLESS OTHERWISE SPECIFIED: 9 PLC ±.5 1 PLC ±.5 3 PLC ±.25 4 PLC ±.5 ANGLES ±.2 FINISH		DWN R. GRZYBOWSKI 30 JAN 2009 CHK P. D'AMATO 30 JAN 2009 APVD M. PERCHERIE 30 JAN 2009 PRODUCT SPEC APPLICATION SPEC WEIGHT CUSTOMER DRAWING		Tyco Electronics Harrisburg, PA 17105-3608 NAME SOCKET CONNECTOR, SMT P2-S24-P8 MINI CROWN EDGE SIZE CAGE CODE DRAWING NO A100779C-2085133 SCALE 5:1 SHEET 2 OF 4 REV A	
-----------------------	--	---------------------------------------------------------------------------------------------------------------------	--	----------------------------------------------------------------------------------------------------------------------------------------------------------------	--	----------------------------------------------------------------------------------------------------------------------------------------------------------------------------------------------	--

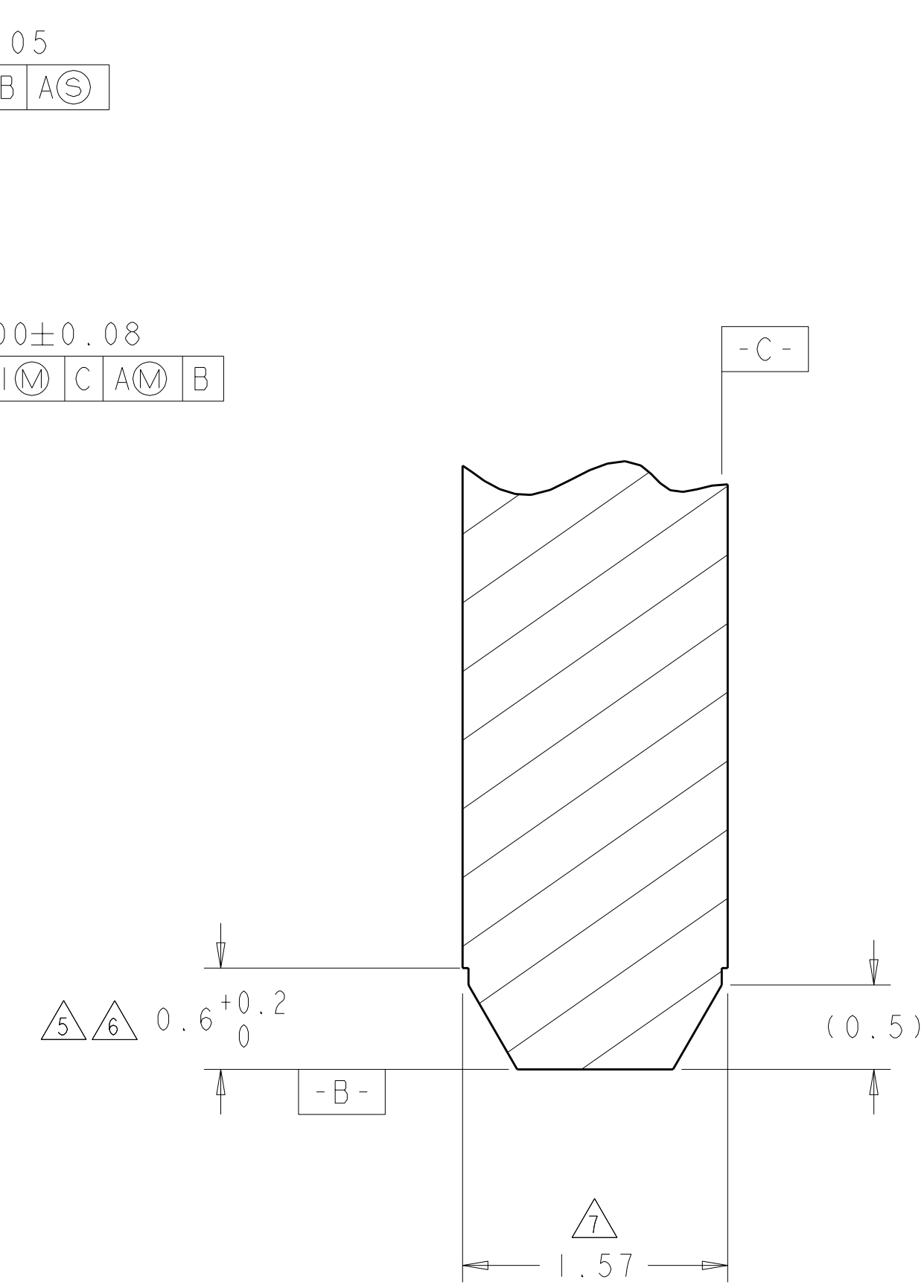
LOC	DIST	REV	DATE	BY	APPD
GP	00				



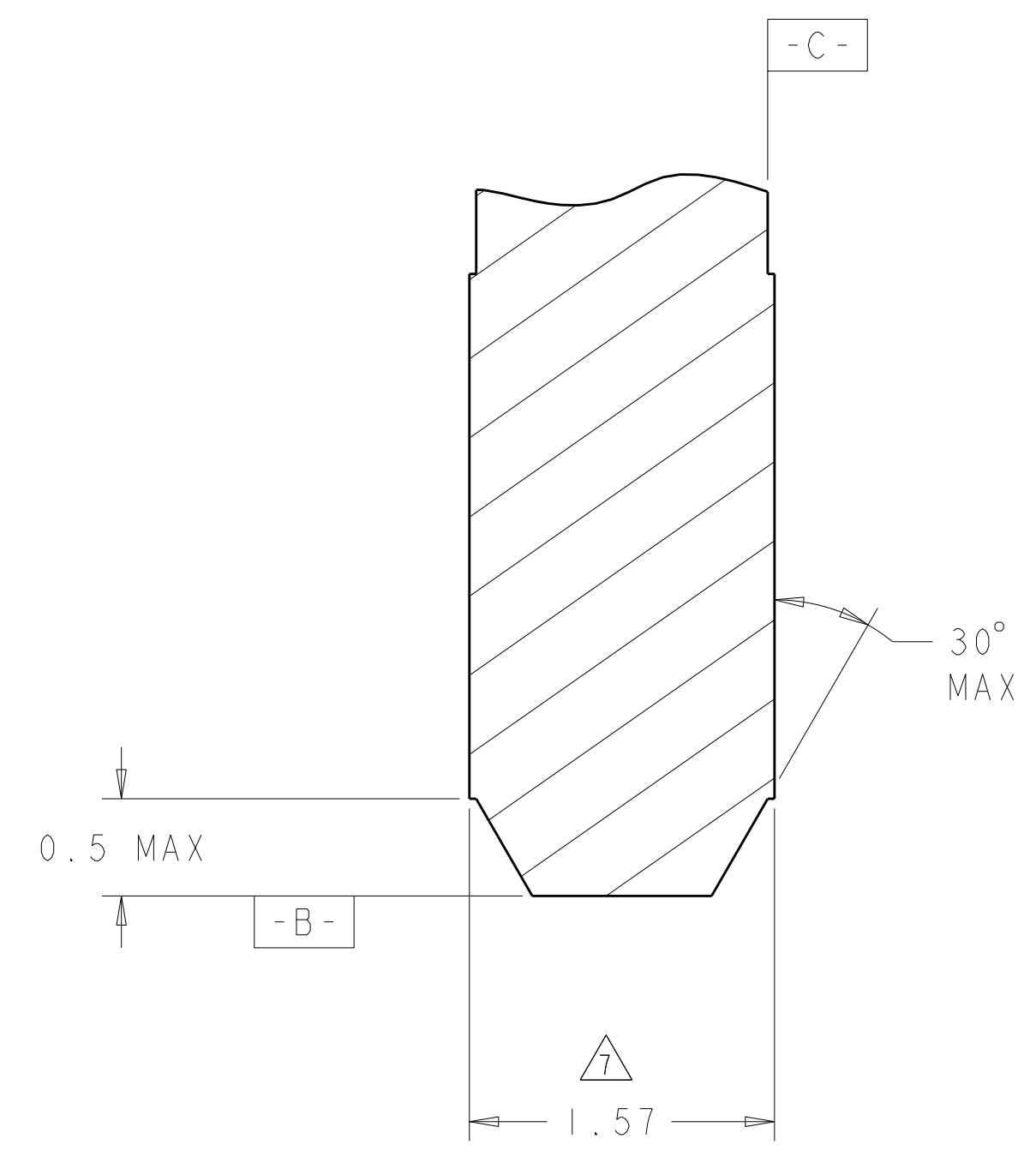
RECOMMENDED MATING BOARD SCALE 4:1



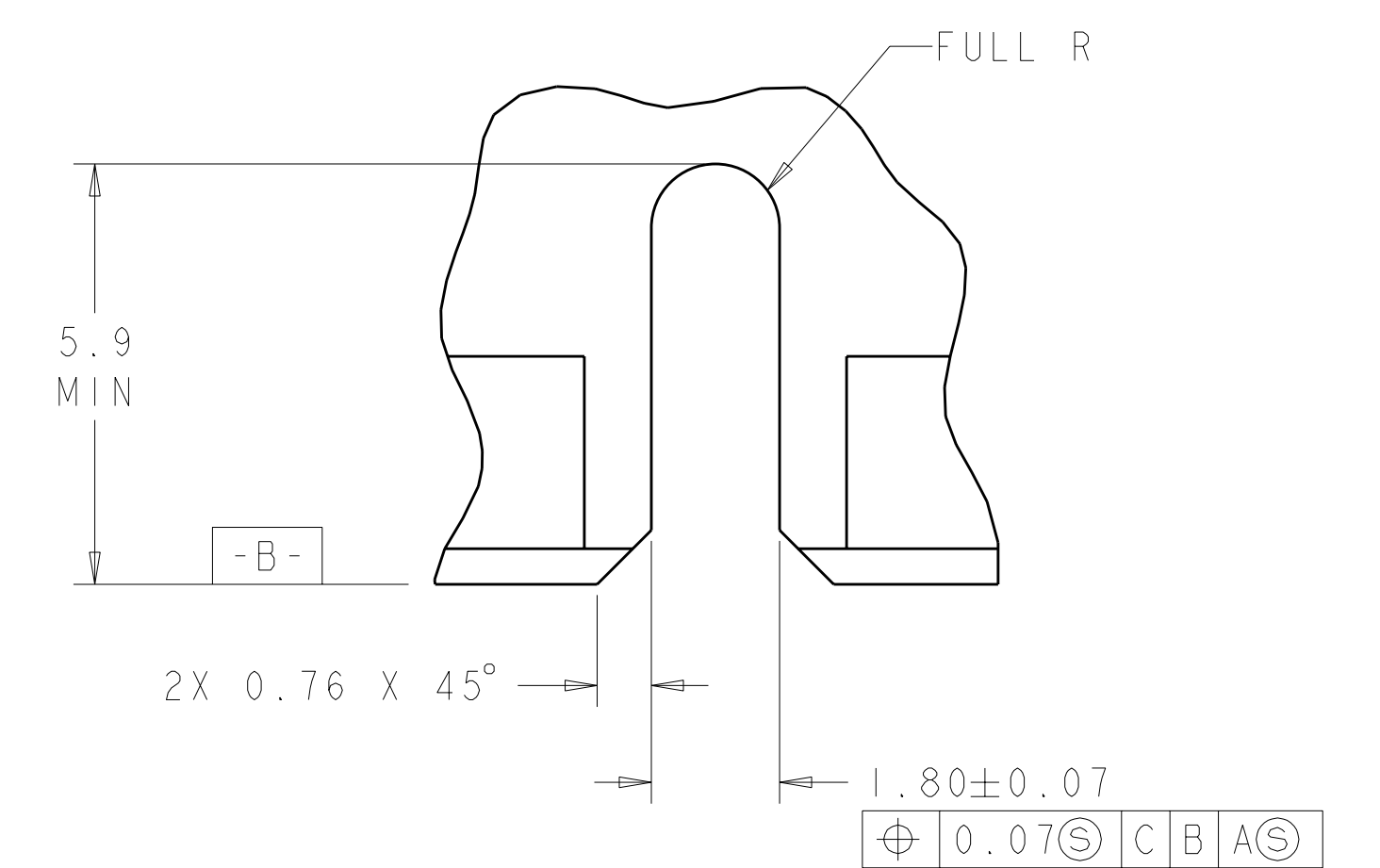
RECOMMENDED PC BOARD KEEP OUT AREA SCALE 3:1



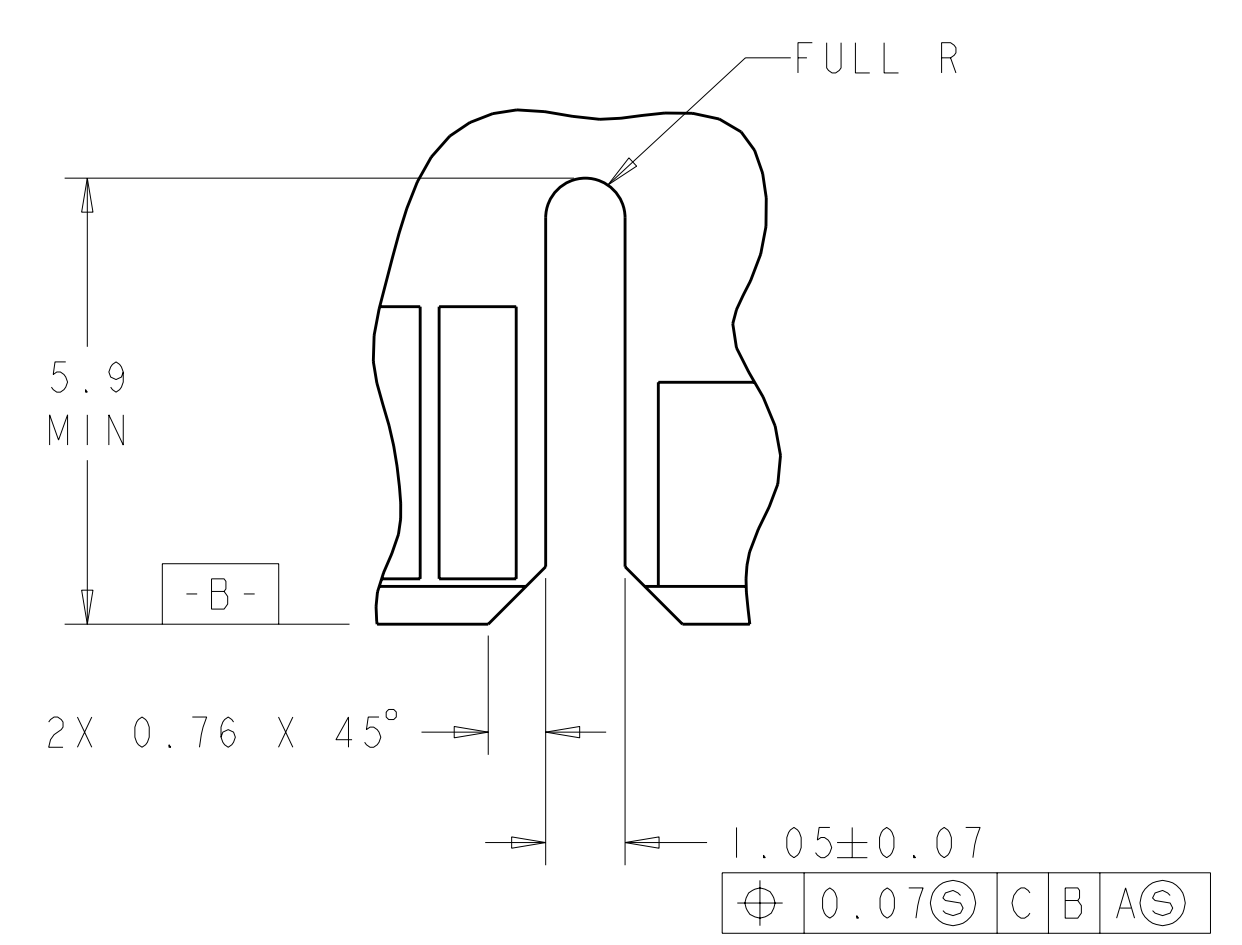
SECTION U-U SCALE 30:1



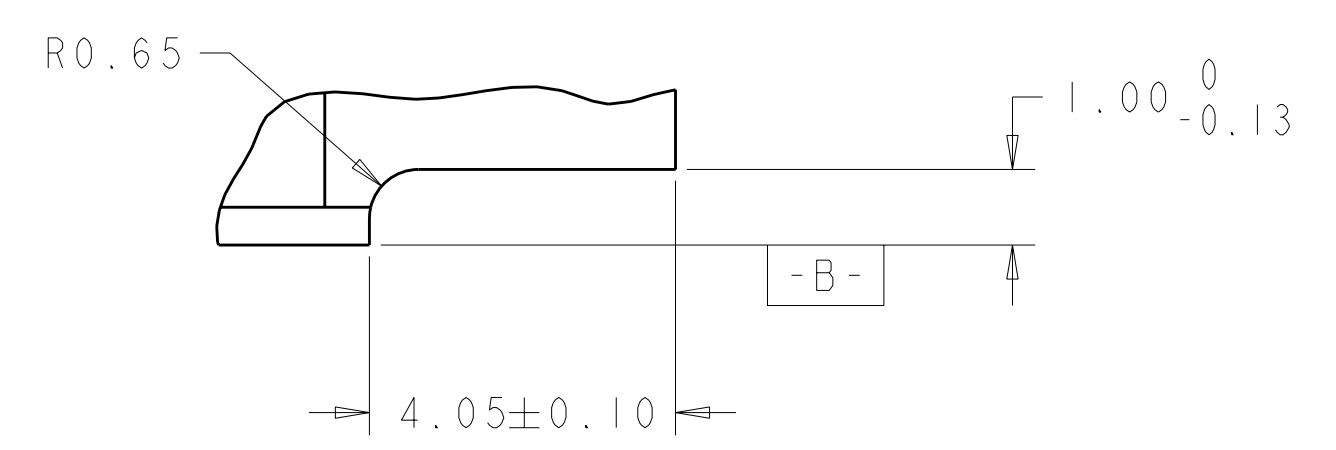
SECTION T-T SCALE 30:1



DETAIL L SCALE 10:1



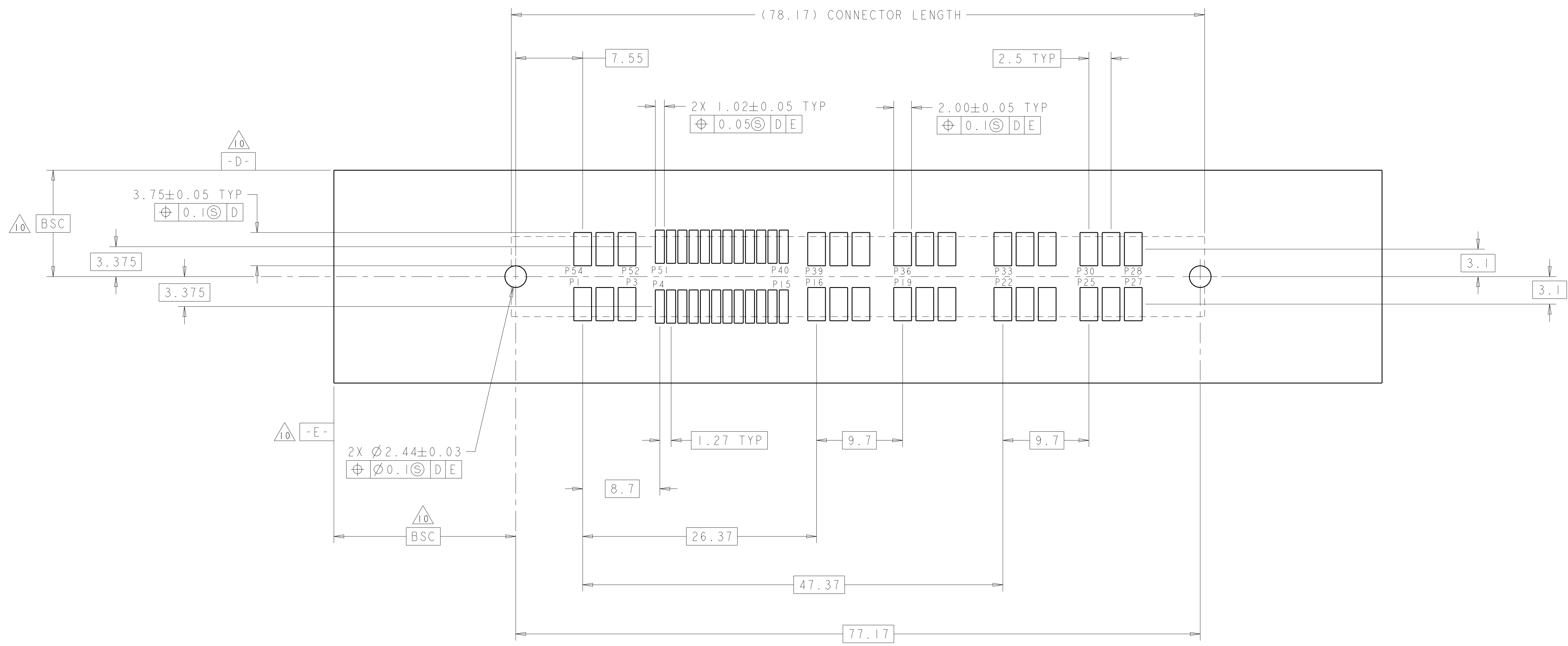
DETAIL M 2X TYPICAL SCALE 10:1



DETAIL N 2X TYPICAL SCALE 10:1

DIMENSIONS: mm TOLERANCES UNLESS OTHERWISE SPECIFIED: 9 PLC ±.5 1 PLC ±.25 5 PLC ±.25 4 PLC ±.25 ANGLES ±.2 FINISH #2		DWN: R. GRZYBOWSKI 30JAN2009 CHK: P. D'AMATO 30JAN2009 APVD: M. PERCHERIE 30JAN2009 PRODUCT SPEC APPLICATION SPEC WEIGHT CUSTOMER DRAWING	Tyco Electronics Harrisburg, PA 17105-3608 NAME: SOCKET CONNECTOR, SMT P2-S24-P8 MINI CROWN EDGE SIZE: A CAGE CODE: 100779 DRAWING NO: C-2085133 SCALE: 5:1 SHEET: 3 OF 4 REV: A
--------------------------------------------------------------------------------------------------------------------------------------------	--	-------------------------------------------------------------------------------------------------------------------------------------------------------------	----------------------------------------------------------------------------------------------------------------------------------------------------------------------------------------------------------

LOC	DIST	REVISIONS			
GP	00	REV	DATE	DWN	APVD
		-	SEE SHEET 1	-	-



RECOMMENDED SOLDER LAND GUIDELINE
 AS VIEWED FROM CONNECTOR SIDE
 SCALE 4:1

<small>THIS DRAWING IS UNPUBLISHED. RELEASED FOR PUBLICATION. ALL RIGHTS RESERVED. THIS DRAWING IS UNPUBLISHED. RELEASED FOR PUBLICATION. ALL RIGHTS RESERVED.</small>		DWN: R. GRZYBOWSKI CHK: P. D'AMATO APVD: M. PERCHERIE	30 JAN 2009 30 JAN 2009 30 JAN 2009	Tyco Electronics Harrisburg, PA 17105-3608
DIMENSIONS: mm 	TOLERANCES UNLESS OTHERWISE SPECIFIED: 9 PLC ±.5 8 PLC ±.25 5 PLC ±.25 4 PLC ±.25 ANGLES ±.25	NAME: SOCKET CONNECTOR, SMT P2-S24-P8 MINI CROWN EDGE	SIZE: A CAGE CODE: 100779 DRAWING NO: C-2085133	RESTRICTED TO: -
MATERIAL:	FINISH: #2	WEIGHT: -	CUSTOMER DRAWING	SCALE: 5:1 SHEET: 4 OF 4 REV: A