

ITEM	PART#	DESCRIPTION	QTY	UOM
A	510210900	PicoBlade1.25 Rec Hsg 9P	1	PC
B	500588000	PicoBlade1.25 Crimp Rec Term Chain Tin	9	PC
C	--	Blank label 12.7x35.5mm (WHT:12.7mm) HF	1	PC

FROM	TO	DESCRIPTION	COLOR
A1	--	CABLE 28 AWG UL 1061 BLACK	BLACK
A2	--	CABLE 28 AWG UL 1061 BLACK	BLACK
A3	--	CABLE 28 AWG UL 1061 BLACK	BLACK
A4	--	CABLE 28 AWG UL 1061 BLACK	BLACK
A5	--	CABLE 28 AWG UL 1061 BLACK	BLACK
A6	--	CABLE 28 AWG UL 1061 BLACK	BLACK
A7	--	CABLE 28 AWG UL 1061 BLACK	BLACK
A8	--	CABLE 28 AWG UL 1061 BLACK	BLACK
A9	--	CABLE 28 AWG UL 1061 BLACK	BLACK

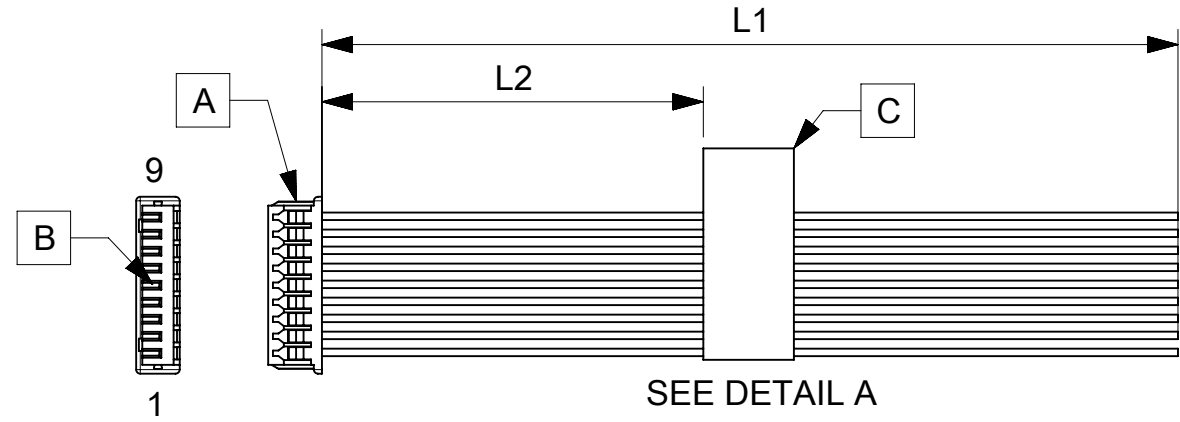
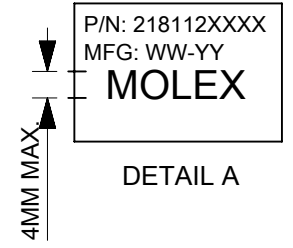


TABLE			
PART NUMBER	L1	L2 (REF)	TITLE
2181120900	75±5	30	9 CIRCUIT PICOBLADE R:BLUNT CABLE 75MM
2181120901	150±6	70	9 CIRCUIT PICOBLADE R:BLUNT CABLE 150MM
2181120902	225±6	105	9 CIRCUIT PICOBLADE R:BLUNT CABLE 225MM
2181120903	300±8	145	9 CIRCUIT PICOBLADE R:BLUNT CABLE 300MM
2181120904	425±8	205	9 CIRCUIT PICOBLADE R:BLUNT CABLE 425MM



- NOTES
1. Connector view shown is from mating side.
 2. Free ends must be blunt cut.
 3. Label text must be 2mm max. in height with Arial font.
 4. Label must be wrapped in flag type on the cables.

REVISION			
DATE	REV	DESCRIPTION	CHANGER
04/03/2021	A	INITIAL RELEASE	ARAJU

DOCUMENT STATUS	P1	RELEASE DATE	2021/03/26	04:03:45
-----------------	----	--------------	------------	----------

FUNCTIONAL SYMBOLS $\frac{E}{A} = 0$ $\frac{E}{E} = 0$ $\frac{E}{P} = 0$ DIVISIONAL SYMBOLS	DIMENSION UNITS: mm SCALE: NTS		CURRENT REV DESC:			
	GENERAL TOLERANCES (UNLESS SPECIFIED)		EC NO: 659320			SEE TABLE
	ANGULAR TOL ± °		DRWN: ARAJU 2021/03/04			
	4 PLACES ±		CHK'D: RDESAI01 2021/03/26			
3 PLACES ±		APPR: RDESAI01 2021/03/26		PRODUCT CUSTOMER DRAWING		
2 PLACES ±		INITIAL REVISION:		DOCUMENT NUMBER: 2181120900		
1 PLACE ±		DRWN: ARAJU 2021/03/04		DOC TYPE: PSD DOC PART: 000 REVISION: A		
0 PLACES ±		APPR: RDESAI01 2021/03/26		MATERIAL NUMBER: SEE TABLE		
DRAFT WHERE APPLICABLE MUST REMAIN WITHIN DIMENSIONS		THIRD ANGLE PROJECTION		CUSTOMER: GENERAL MARKET		
		DRAWING: A4-SIZE		SHEET NUMBER: 1 OF 1		
		SERIES: 218112				