

BILL OF MATERIALS

NO.	QTY	SUPPLIER	DESCRIPTION	PART No.	SEE NOTE
1	2	MOLEX	15 CIRCUIT PCMCIA CONNECTOR	89076-0000	
2	2	MOLEX	PCMCIA CONNECTOR OVERMOULD	99038-0025	1,2
3	1	MOLEX	10 CORE CABLE SEE CABLE SPECIFICATION	99036-0064	1

WIRING DIAGRAM : 10 CORE CABLE

CIRCUIT No.	CONDUCTOR No.	CIRCUIT No.	CONDUCTOR COLOUR REF
1	1	1	RED
2	2	2	BLACK
3	3	3	WHITE
4	4	4	BROWN
5	5	5	GREEN
6	6	6	YELLOW
7	7	7	BLUE
8	8	8	GREY
14	9	14	VIOLET
15	10	15	ORANGE

3 CABLE SPECIFICATION : 10 CORE CABLE

1. CABLE TYPE: FLAT RIBBON ROUND OTHER
 SPIRAL CABLE YES NO
 NO. OF CONDUCTORS **10**

2. CABLE REQUIREMENTS : N/A

3. CONDUCTOR SPECIFICATIONS :

CONDUCTOR :	CONDUCTOR NO.	COLOURS:
- MATERIAL	1 - 10	1. RED
- A.W.G.	28	2. BLACK
- STRANDING QTY/GUAGE	7/36	3. WHITE
- TENSILE STRENGTH	N/A	4. BROWN
INSULATION :		5. GREEN
- MATERIAL	PVC	6. YELLOW
- MIN. WALL THICKNESS	0.20	7. BLUE
- COLOUR	SEE CABLE DIAGRAM/COLOUR CODE	8. GREY
- OUTSIDE DIAMETER	0.75 ± 0.05	9. VIOLET
DIRECTION OF LAY	N/A	10. ORANGE
LENGTH OF LAY	N/A	
U.L. RATING	N/A	

SCALE 10:1

4. FILLER : ENOUGH TO MAKE CABLE ROUND

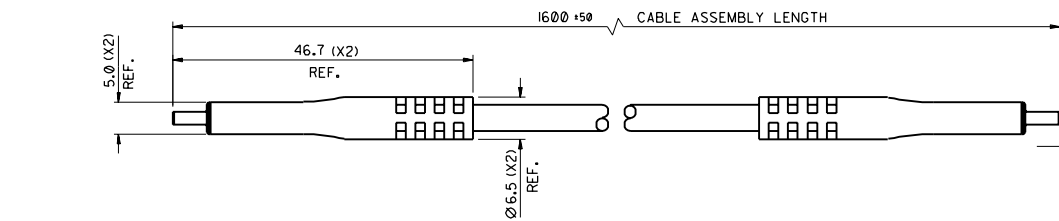
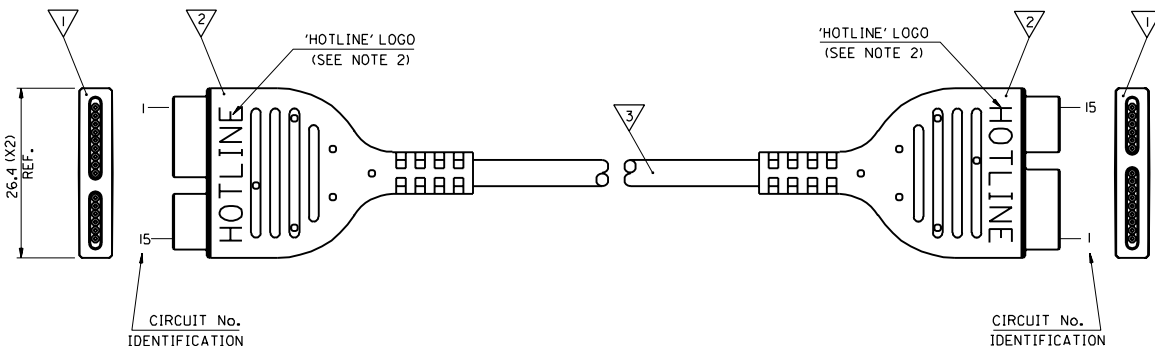
5. SEPARATOR : TYPE N/A
LAY DIRECTION _____

6. SHIELD : FOIL TYPE N/A
FOIL FACING _____

7. DRAIN WIRE : GAUGE N/A
STRANDING REQUIREMENT _____

8. SPIRAL/BRAID : GAUGE N/A
COPPER TYPE _____
COVERAGE _____

9. CABLE JACKET : TYPE PVC
FINAL DIAMETER 4.10 ± 0.15
MIN. THICKNESS 0.60
COLOUR BLACK
FINISH MATT
U.L. RATING N/A
HARDNESS 83+3 SHORE A
STRIPABILITY N/A
MARKINGS NONE



NOTES:

1. ONLY AVAILABLE FROM MOLEX AS PART OF A CABLE ASSEMBLY.
2. 'HOTLINE' LOGO ON ONE SIDE OF OVERMOULD ONLY AS SHOWN.

ORIGINAL RELEASE EON E70331 SCL/125 MK	DIMENSIONS SHOWN (METRIC) INCH UNLESS OTHERWISE SPECIFIED TOLERANCES UNLESS OTHERWISE SPECIFIED INCH (METRIC) 3 PLACE ± .000 (± .000) 2 PLACE ± .00 (± .00) 1 PLACE ± .0 (± .0) SPRIT WHERE APPLICABLE MUST REMAIN WITHIN DIMENSIONS	DRWG BY MK	REVISE ONLY ON CAD SYSTEM	
			DATE	SH. REV.
DESIGN DIMENSION (PRIMARY) □ IN. □ MM EQUIVALENT DIMENSION (SECONDARY) □ IN. □ MM	SCALE 2:1	CAD/CAM FILENAME S92603 DCA		
		THIS DRAWING CONTAINS INFORMATION THAT IS PROPRIETARY TO MOLEX INC. & SHOULD NOT BE USED WITHOUT WRITTEN PERMISSION		
A	LTR	APPRD BY	TITLE 15 POSITION PCMCIA HARNESS ASSEMBLY (DOUBLE ENDED)	
			MOLEX EUROPE	
PART NO. 92603-0001		SHEET NO. DATE 10F1 96/11/25		
DWG NO. SDA-92603-0001		SIZE C		

PART NO. 92603-0001
1000-3-0026-0001