

16 CH: 1 Output Optical Evaluation for LTC6561 Four-Channel Transimpedance Amplifier with Output Multiplexing

DESCRIPTION

Demonstration circuit 2900A is a 16-channel analog LiDAR receiver chain. The [LTC6561](#) is featured; which has 74kΩ transimpedance gain and 30μA linear input current range. Utilizing the LTC6561's output MUX, four devices are combined to a single output. The LTC6561's fast overload recovery makes it well suited for LIDAR receivers. The LTC6561 operates from 5V single supply. The LTC6561's single-ended output can swing 2V_{P-P} on a 100Ω load. On the DC2900A, the FirstSensor's

16-channel 400nm to 1100nm wavelength sensitive APD array sensor feeds four LTC6561s for current to voltage conversion and amplification. The APDs are DC coupled to the TIAs inputs to facilitate fast channel switching and output multiplexing. The DC2900A AC-coupled output is intended to demonstrate time domain measurements into 50Ω systems.

[Design files for this circuit board are available.](#)

All registered trademarks and trademarks are the property of their respective owners.

BOARD PHOTO

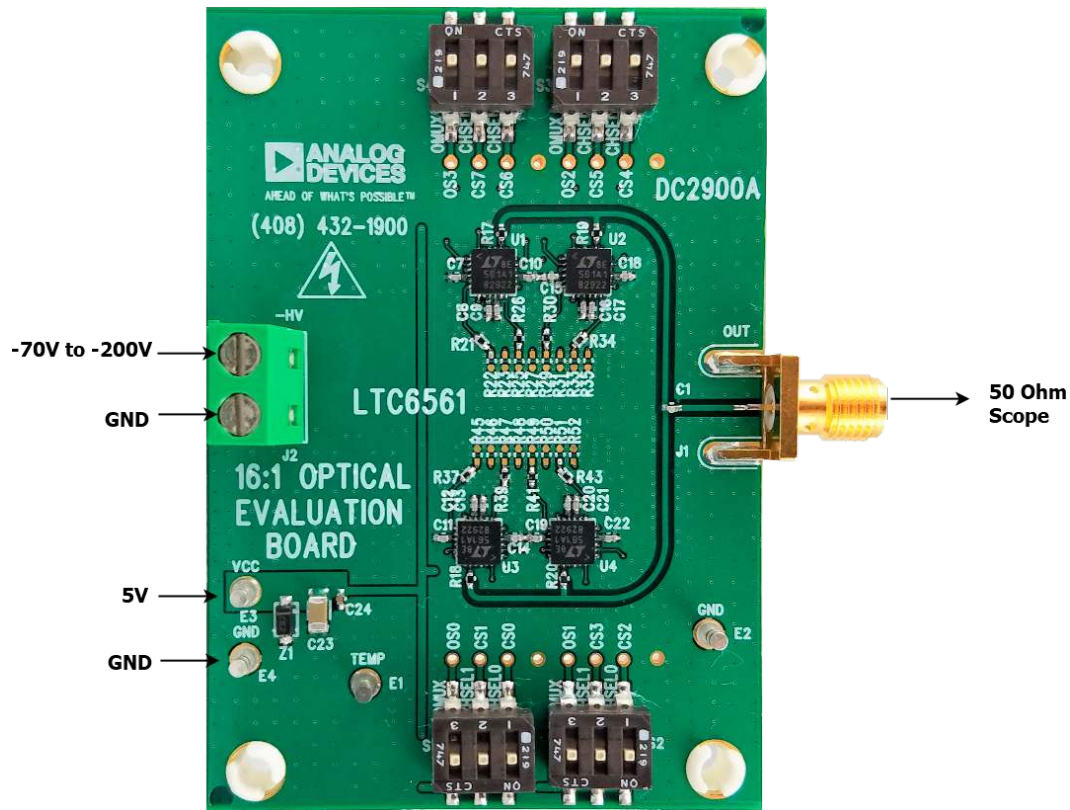


Figure 1. DC2900A Connection Diagram

QUICK START PROCEDURE

1. Connect the SMA out (J1) to an oscilloscope that is 50Ω terminated. The output is AC-coupled with a 1000pF capacitor (C1).
2. Connect a 5V low-noise power supply as shown in Figure 1. The supply should be capable of delivering at least 500mA.
3. Apply -70V to -200V to J2 according to the desired APD gain. The supply should be capable of delivering at least 5mA. The connector and its passives are rated up to 300V.

WARNING! LETHAL VOLTAGES ARE PRESENT ON THE DC2900A CIRCUIT BOARD. AVOID CONTACT WITH THE HIGH VOLTAGE PATH TO PREVENT PERSONAL INJURY.

4. Apply a 400nm to 1100nm wavelength pulsed laser to the APDs which are located on the bottom of the DC2900A, shown in Figure 2. The maximum repetition rate of the pulsed laser should be 100kHz. The DC2900A repetition rate is limited by the output AC coupling capacitor and assumes a pulse width of 5ns.

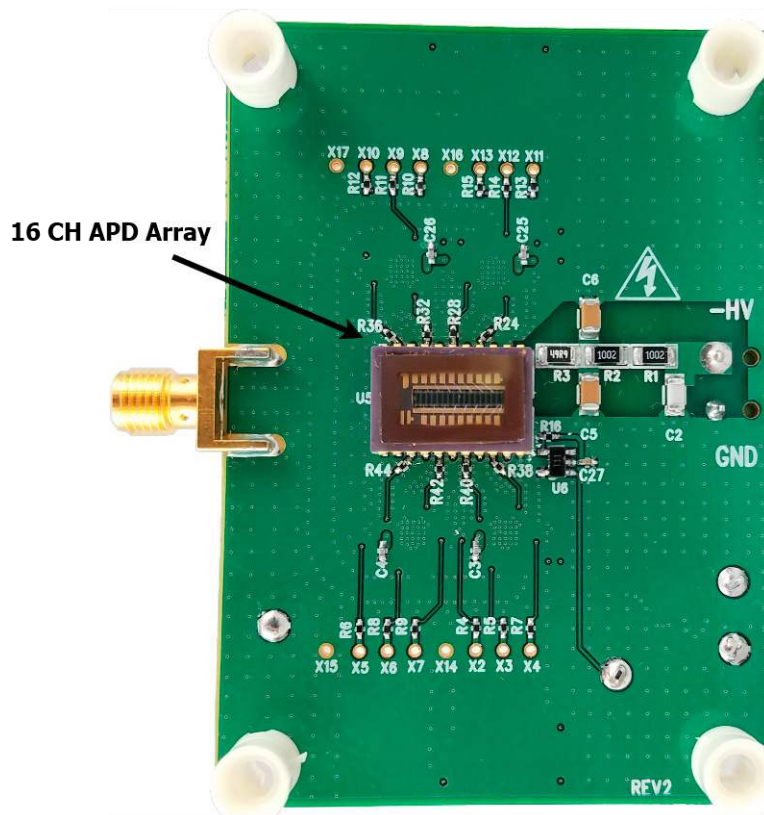


Figure 2. Backside of The DC2900A

QUICK START PROCEDURE

Using OMUX and Channel Select

Each LTC6561 has an OMUX pin and two channel select pins. For convenience, the DC2900A has 3 DIP switches per LTC6561 to select various APD channels. The high position is located towards the edge of the board and the low position is towards the middle of the board. This is shown in Figure 3. Refer to Table 1 for configuration of

the switches to select a channel. Figure 4 shows the APD channel number locations referenced in Table 1. Do not enable (OMUX is low) more than one LTC6561. Doing so will produce a contention on the outputs between the LTC6561s. If all four OMUXs are left high, then all 16 channels of the APDs are decoupled to the output.



Figure 3. DC2900 Switch Positions for High and Low

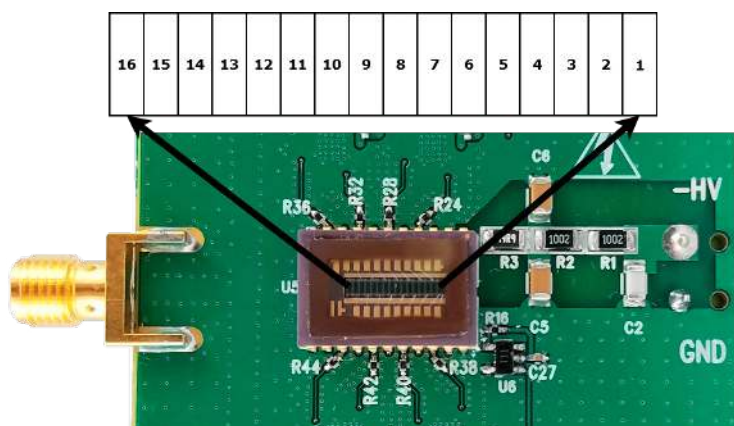


Figure 4. APD Channel Orientation

QUICK START PROCEDURE

Table 1. APD Channel Selection

APD CHANNEL	S1			S2			S3			S4		
	OS0 (OMUX)	CS1 (CHSEL1)	CS0 (CHSELO)	OS1 (OMUX)	CS3 (CHSEL1)	CS2 (CHSELO)	OS2 (OMUX)	CS5 (CHSEL1)	CS4 CHSELO	OS3 (OMUX)	CS7 (CHSEL1)	CS6 (CHSELO)
1	LOW	HIGH	HIGH	HIGH	X	X	HIGH	X	X	HIGH	X	X
2	HIGH	X	X	HIGH	X	X	HIGH	X	X	LOW	LOW	LOW
3	LOW	HIGH	LOW	HIGH	X	X	HIGH	X	X	HIGH	X	X
4	HIGH	X	X	HIGH	X	X	HIGH	X	X	LOW	LOW	HIGH
5	LOW	LOW	HIGH	HIGH	X	X	HIGH	X	X	HIGH	X	X
6	HIGH	X	X	HIGH	X	X	HIGH	X	X	LOW	HIGH	LOW
7	LOW	LOW	LOW	HIGH	X	X	HIGH	X	X	HIGH	X	X
8	HIGH	X	X	HIGH	X	X	HIGH	X	X	LOW	HIGH	HIGH
9	HIGH	X	X	LOW	HIGH	HIGH	HIGH	X	X	HIGH	X	X
10	HIGH	X	X	HIGH	X	X	LOW	LOW	LOW	HIGH	X	X
11	HIGH	X	X	LOW	HIGH	LOW	HIGH	X	X	HIGH	X	X
12	HIGH	X	X	HIGH	X	X	LOW	LOW	HIGH	HIGH	X	X
13	HIGH	X	X	LOW	LOW	HIGH	HIGH	X	X	HIGH	X	X
14	HIGH	X	X	HIGH	X	X	LOW	HIGH	LOW	HIGH	X	X
15	HIGH	X	X	LOW	LOW	LOW	HIGH	X	X	HIGH	X	X
16	HIGH	X	X	HIGH	X	X	LOW	HIGH	HIGH	HIGH	X	X

X = Don't Care

Measuring Temperature

DC2900A includes the option to measure temperature using the TMP36. A turret labeled TEMP is connected to

the TMP36 output. At 25°C, the TMP36 provides 750mV output and has a scale factor of 10 mV/°C. This feature is useful to temperature compensate the APD.

EXTERNAL CONNECTIONS

Connections:

J1: OUT – the analog output of the LTC6561.

J2: 2-pin terminal block. Negative high voltage input for the APDs. A maximum of –300V can be applied.

Turrets:

E1: TEMP – TMP36 analog out.

E3: VCC – LTC6561 VCC and VCCO analog inputs.

E2, E4: GND – the DC2900A ground.



ESD Caution

ESD (electrostatic discharge) sensitive device. Charged devices and circuit boards can discharge without detection. Although this product features patented or proprietary protection circuitry, damage may occur on devices subjected to high energy ESD. Therefore, proper ESD precautions should be taken to avoid performance degradation or loss of functionality.

Legal Terms and Conditions

By using the evaluation board discussed herein (together with any tools, components documentation or support materials, the "Evaluation Board"), you are agreeing to be bound by the terms and conditions set forth below ("Agreement") unless you have purchased the Evaluation Board, in which case the Analog Devices Standard Terms and Conditions of Sale shall govern. Do not use the Evaluation Board until you have read and agreed to the Agreement. Your use of the Evaluation Board shall signify your acceptance of the Agreement. This Agreement is made by and between you ("Customer") and Analog Devices, Inc. ("ADI"), with its principal place of business at One Technology Way, Norwood, MA 02062, USA. Subject to the terms and conditions of the Agreement, ADI hereby grants to Customer a free, limited, personal, temporary, non-exclusive, non-sublicensable, non-transferable license to use the Evaluation Board FOR EVALUATION PURPOSES ONLY. Customer understands and agrees that the Evaluation Board is provided for the sole and exclusive purpose referenced above, and agrees not to use the Evaluation Board for any other purpose. Furthermore, the license granted is expressly made subject to the following additional limitations: Customer shall not (i) rent, lease, display, sell, transfer, assign, sublicense, or distribute the Evaluation Board; and (ii) permit any Third Party to access the Evaluation Board. As used herein, the term "Third Party" includes any entity other than ADI, Customer, their employees, affiliates and in-house consultants. The Evaluation Board is NOT sold to Customer; all rights not expressly granted herein, including ownership of the Evaluation Board, are reserved by ADI. CONFIDENTIALITY. This Agreement and the Evaluation Board shall all be considered the confidential and proprietary information of ADI. Customer may not disclose or transfer any portion of the Evaluation Board to any other party for any reason. Upon discontinuation of use of the Evaluation Board or termination of this Agreement, Customer agrees to promptly return the Evaluation Board to ADI. ADDITIONAL RESTRICTIONS. Customer may not disassemble, decompile or reverse engineer chips on the Evaluation Board. Customer shall inform ADI of any occurred damages or any modifications or alterations it makes to the Evaluation Board, including but not limited to soldering or any other activity that affects the material content of the Evaluation Board. Modifications to the Evaluation Board must comply with applicable law, including but not limited to the RoHS Directive. TERMINATION. ADI may terminate this Agreement at any time upon giving written notice to Customer. Customer agrees to return to ADI the Evaluation Board at that time. LIMITATION OF LIABILITY. THE EVALUATION BOARD PROVIDED HEREUNDER IS PROVIDED "AS IS" AND ADI MAKES NO WARRANTIES OR REPRESENTATIONS OF ANY KIND WITH RESPECT TO IT. ADI SPECIFICALLY DISCLAIMS ANY REPRESENTATIONS, ENDORSEMENTS, GUARANTEES, OR WARRANTIES, EXPRESS OR IMPLIED, RELATED TO THE EVALUATION BOARD INCLUDING, BUT NOT LIMITED TO, THE IMPLIED WARRANTY OF MERCHANTABILITY, TITLE, FITNESS FOR A PARTICULAR PURPOSE OR NON-INFRINGEMENT OF INTELLECTUAL PROPERTY RIGHTS. IN NO EVENT WILL ADI AND ITS LICENSORS BE LIABLE FOR ANY INCIDENTAL, SPECIAL, INDIRECT, OR CONSEQUENTIAL DAMAGES RESULTING FROM CUSTOMER'S POSSESSION OR USE OF THE EVALUATION BOARD, INCLUDING BUT NOT LIMITED TO LOST PROFITS, DELAY COSTS, LABOR COSTS OR LOSS OF GOODWILL. ADI'S TOTAL LIABILITY FROM ANY AND ALL CAUSES SHALL BE LIMITED TO THE AMOUNT OF ONE HUNDRED US DOLLARS (\$100.00). EXPORT. Customer agrees that it will not directly or indirectly export the Evaluation Board to another country, and that it will comply with all applicable United States federal laws and regulations relating to exports. GOVERNING LAW. This Agreement shall be governed by and construed in accordance with the substantive laws of the Commonwealth of Massachusetts (excluding conflict of law rules). Any legal action regarding this Agreement will be heard in the state or federal courts having jurisdiction in Suffolk County, Massachusetts, and Customer hereby submits to the personal jurisdiction and venue of such courts. The United Nations Convention on Contracts for the International Sale of Goods shall not apply to this Agreement and is expressly disclaimed.