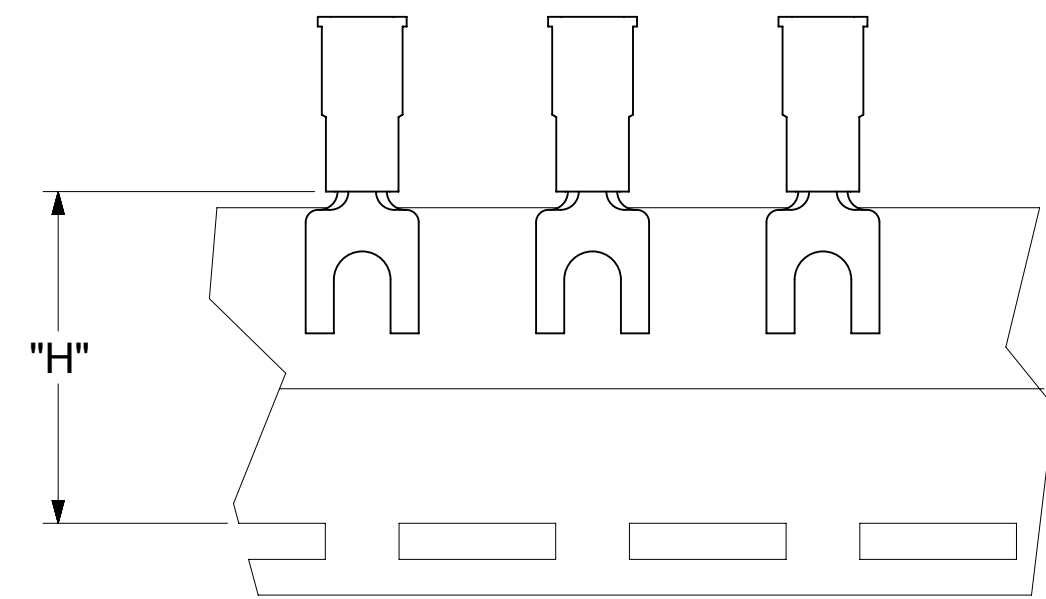
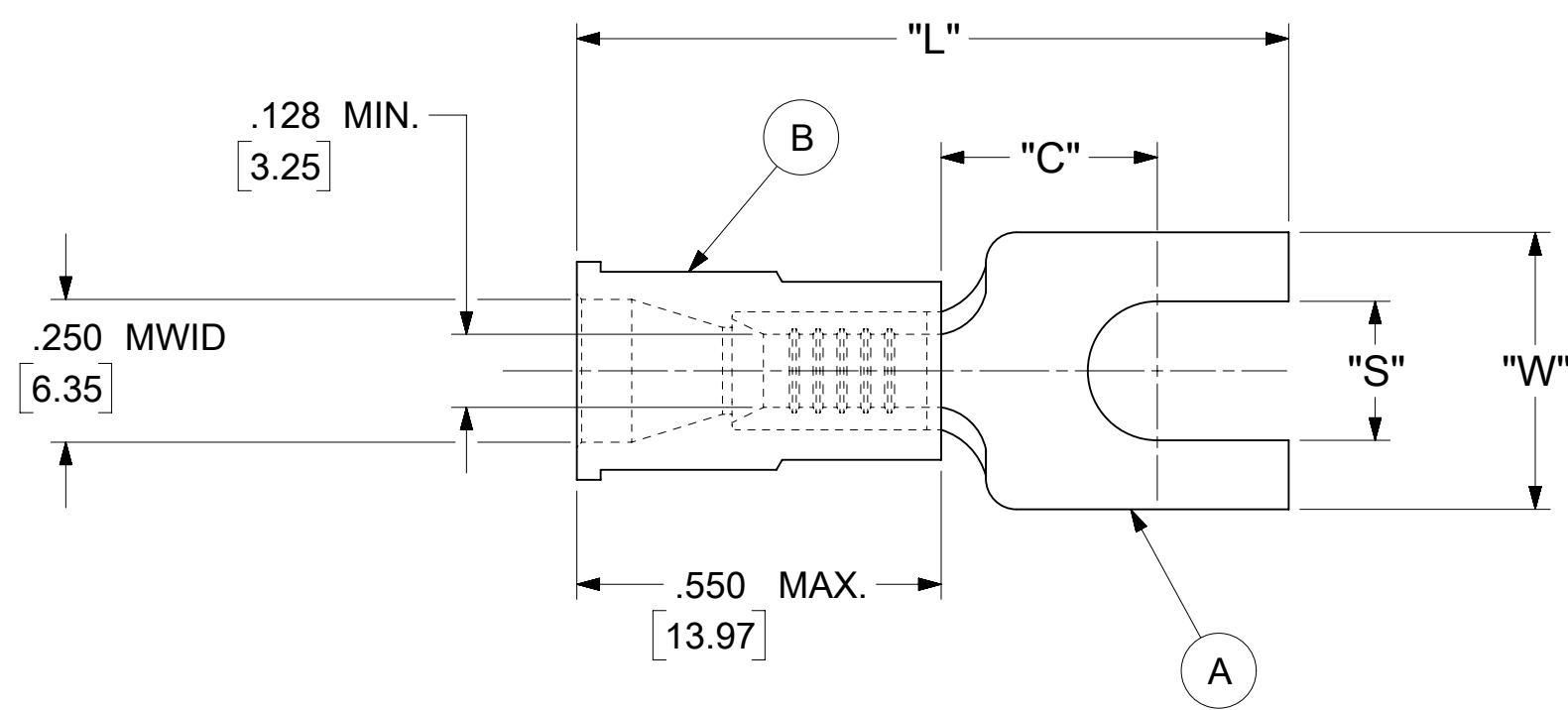


LOOSE PIECE		TAPE MOUNTED		SPECIFICATIONS						
MATERIAL NUMBER	ENGINEERING NUMBER	MATERIAL NUMBER	ENGINEERING NUMBER	STUD SIZE	"S" ±.005 [0.13]	"W" ±.010 [0.25]	"C" MIN.	"L" MAX.	"H"	STOCK ±.001[0.25] THICKNESS
191310006	C-2105-06X	191310005	C-2105-06XT	6	.146 [3.71]	.320 [8.13]	.305 [7.75]	1.075 [27.31]	.980 [24.89]	.040 [1.02]
191310004	C-2105-08X	191310003	C-2105-08XT	8	.173 [4.39]					
191310002	C-2105-10X	191310059	C-2105-10XT	10	.198 [5.03]					



PARTS ON TAPE

NOTES:

- MATERIAL:
 - (A). SPADE TONGUE TERMINAL: COPPER
 - PLATING: ELECTRO-TIN (.0003 MIN.)
 - (B). INSULATION: MOLDED PVC (YELLOW)
- MWID: MAXIMUM WIRE INSULATION DIAMETER
- WIRE SIZE: 12 -10 AWG
4.0 -6.0 MM²
- ALL DIMENSIONS IN INCHES/[MM].
- PARTS ARE ROHS COMPLIANT.
- DIMS. SHOWN ARE FOR REFERENCE ONLY.

SYMBOLS	THIS DRAWING CONTAINS INFORMATION THAT IS PROPRIETARY TO MOLEX ELECTRONIC TECHNOLOGIES, LLC AND SHOULD NOT BE USED WITHOUT WRITTEN PERMISSION										
	DIMENSION UNITS		SCALE		CURRENT REV DESC: MIGRATION TO ECTR/NX						
∇ = 0	INCH/MM		NTS		EC NO: 620815 DRWN: ABENJAMINLW 2019/07/01 CHK'D: GROJAS01 2019/07/18 APPR: JMACNEIL 2019/08/05 INITIAL REVISION: DRWN: JJ 1984/10/31 APPR: JMACNEIL 2019/08/05						
∇ = 0	GENERAL TOLERANCES (UNLESS SPECIFIED)										
∇ = 0		MM	INCH								
S = 0	4 PLACES	±	---	±	---	PRODUCT CUSTOMER DRAWING DOCUMENT NUMBER: 191310010 DOC TYPE: PSD DOC PART: 000 REVISION: A MATERIAL NUMBER: SEE TABLE CUSTOMER: GENERAL MARKET SHEET NUMBER: 1 OF 1					
∇ = 0	3 PLACES	±	---	±	.005						
∇ = 0	2 PLACES	±	0.13	±	.01	19131					
∇ = 0	1 PLACE	±	0.25	±	---	C-SIZE					
☒ = 0	0 PLACES	±	---	±	---	THIRD ANGLE PROJECTION					
■ = 0	DRAFT WHERE APPLICABLE MUST REMAIN WITHIN DIMENSIONS				DRAWING		SERIES		SERIES		
∇ = 0					C-SIZE		19131				