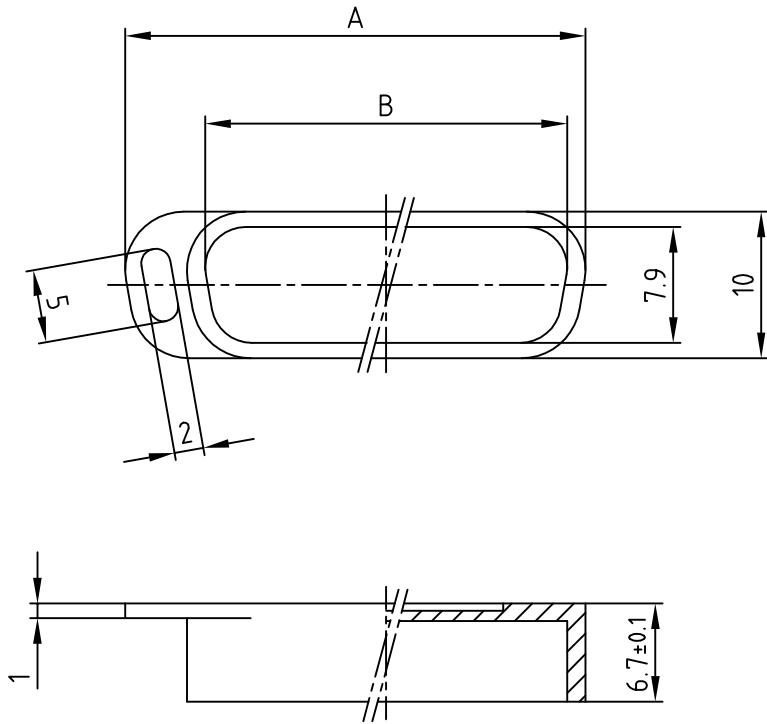


used for: D-SUB



TO PREVENT DAMAGE AT LOW TEMPERATURES NO
IMPACT OR EXTREM MECHANICAL LOAD SHOULD
APPLIED TO THE CAP.
MECHANICAL LOAD SHOULD BE APPLIED ABOVE 0° C

POS.	A	B	Part No.
9	22.9	16.5	600X518009X
15	31.4	24.7	600X518015X
25	44.7	38.3	600X518025X
37	61.2	54.5	600X518037X

RoHS compliant

THIS DRAWING MAY NOT BE COPIED OR
REPRODUCED IN ANY WAY, AND MAY NOT
BE PASSED ON TO A THIRD PARTY WITHOUT
WRITTEN PERMISSION.
OWNERSHIP AND COPYRIGHT OF CONEC GmbH
DO NOT ALTER CAD DRAWING BY HAND

			tolerance		dim. in mm
			DIN 16901 - 150		
rev.	description	date	name	date	name
a	Original			04.03.	Henneboel
				04.03.	Lehmenkühler



scale:	2:1
material:	ABS, Nickel plated
title:	DUST CAP for socket connector 9 - 37pos.
dwg no:	16V2IM5A
part no:	See Table
	DIN-A 4 sh: 1/1