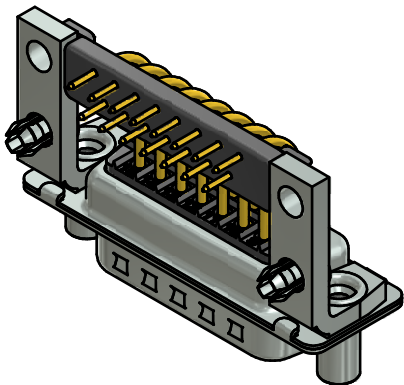
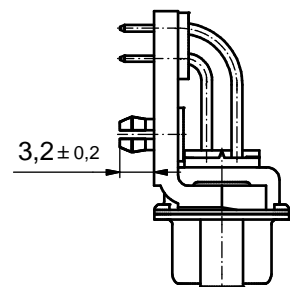
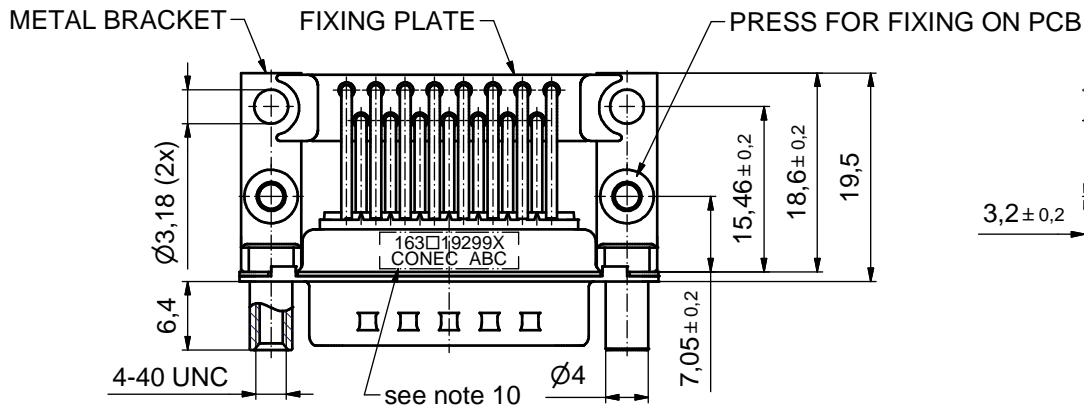
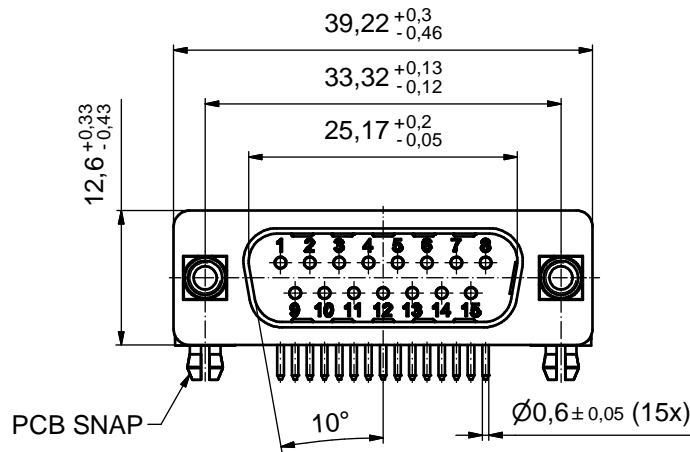
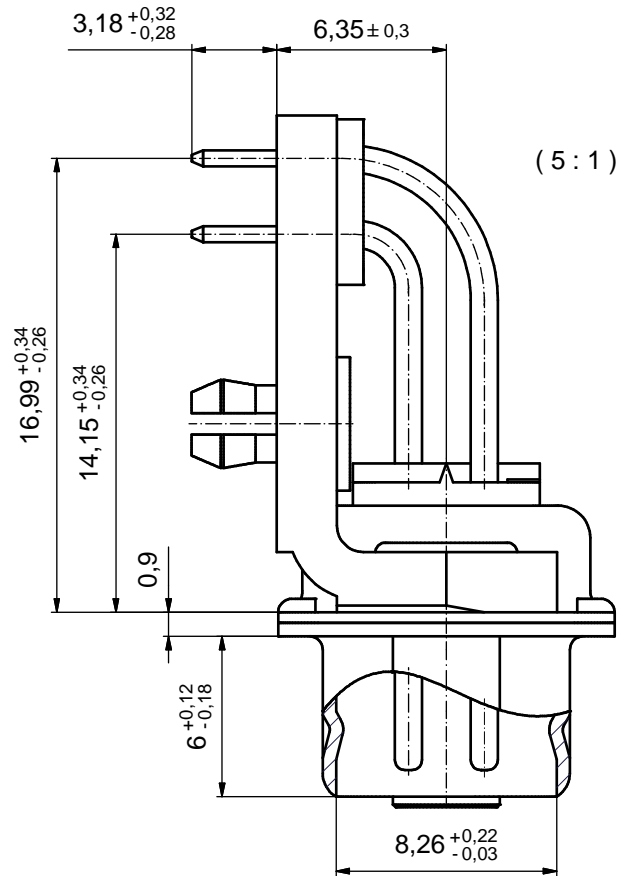


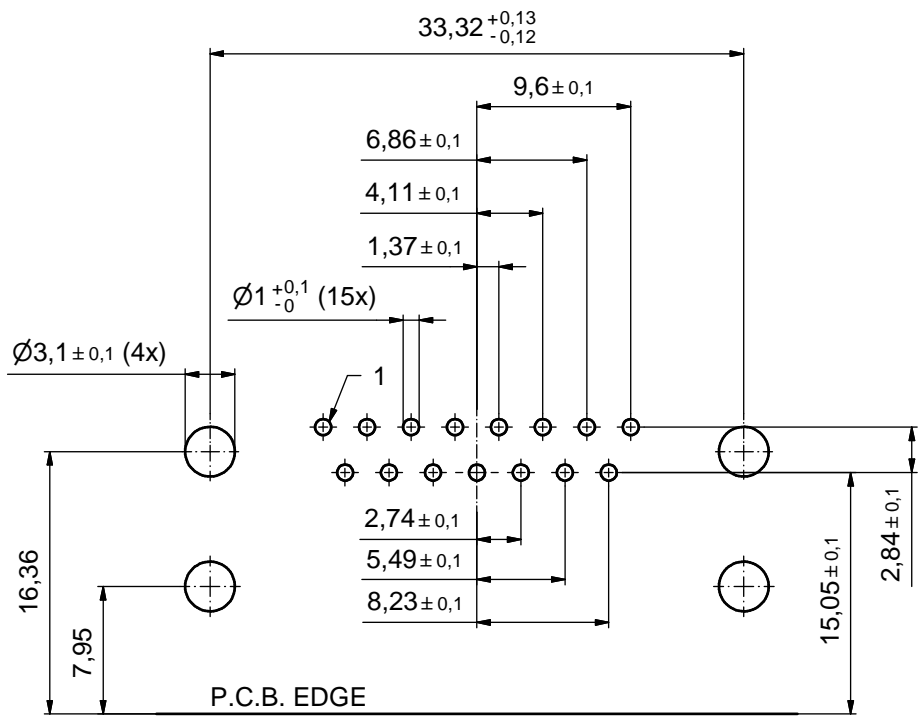
NOTES:

1. METALSHELLS: STEEL; min. 315µm TIN over 40-80µm NICKEL
2. INSULATORS: PBT GF UL 94 V-0; BLACK
3. CONTACTS: COPPER ALLOY; PLATING (SEE PART NO.)
 - PLEASE ADD A for GOLD FLASH over NICKEL (PREFERRED TYPE)
 - PLEASE ADD B for 20µm HARD GOLD over min. 50µm NICKEL
 - PLEASE ADD C for 30µm HARD GOLD over min. 50µm NICKEL
4. METAL BRACKETS: STEEL; min. 320µm TIN over 80µm NICKEL
5. THREADED LOCKS: COPPER ALLOY; min. 200µm TIN over 80µm NICKEL
6. PCB SNAPS: COPPER ALLOY; min. 200µm TIN over 80µm NICKEL
PCB-HOLE: $\varnothing 3,1 \pm 0,1$; PCB THICKNESS 1,6mm
7. FIXING-PLATE: PBT GF UL 94 V-0; BLACK
8. PCB HOLE DRILLINGS ON SHEET 2
9. MAXIMUM TORQUE VALUE FOR THREAD: 6 in.LB
10. CONNECTOR IS PART MARKED: 163□19299X CONEC ABC (see note 3)



Directive 2002/95/EC RoHS compliant

THIS DRAWING MAY NOT BE COPIED OR REPRODUCED IN ANY WAY, AND MAY NOT BE PASSED ON TO A THIRD PARTY WITHOUT WRITTEN PERMISSION. OWNERSHIP AND COPYRIGHT OF CONEC GmbH DO NOT ALTER CAD DRAWING BY HAND	tolerance		dim. in mm	scale: 2:1 (5:1)	
				material: see notes	
	drawn	23.05.14	Schmidt	title: D-SUB MALE 90° 15pos. SOLDER PIN ANGLED 0.590inch threaded lock, metal bracket, fixing plate, snap	
	appd.	23.05.14	Lehmenkühler		
	norm				
d-old			dwg no:		DIN-A3
a	Original			16K1A3459	sh: 1
rev.	description	date	name		
				part no: 163□19299X	(see note 3)



P.C.B. HOLE DRILLINGS
(P.C.B. TOP SIDE)

THIS DRAWING MAY NOT BE COPIED OR REPRODUCED IN ANY WAY, AND MAY NOT BE PASSED ON TO A THIRD PARTY WITHOUT WRITTEN PERMISSION. OWNERSHIP AND COPYRIGHT OF CONEC GmbH DO NOT ALTER CAD DRAWING BY HAND				tolerance		scale: 3:1		
				dim. in mm		material: see sheet 1		
	rev.	description	date	name	date	name	title: P.C.B. HOLE DRILLINGS D-SUB Male 90° 15pos. 0.590inch threaded lock, metal bracket, fixing plate, snap	
	a	Original			drawn	23.05.14		Schmidt
					appd.	23.05.14		Lehmenkühler
					norm			
					d-old			
			CONEC ®			dwg no: 16K1A3459		
						DIN-A3 sh: 2		
						part no: see sheet 1		