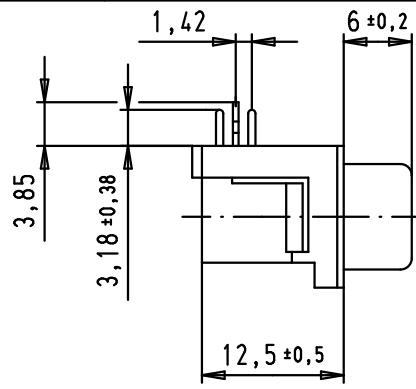
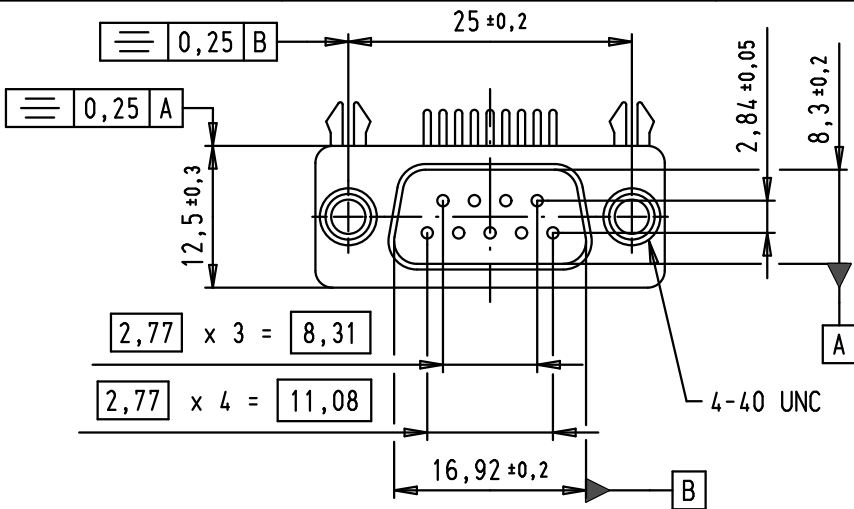


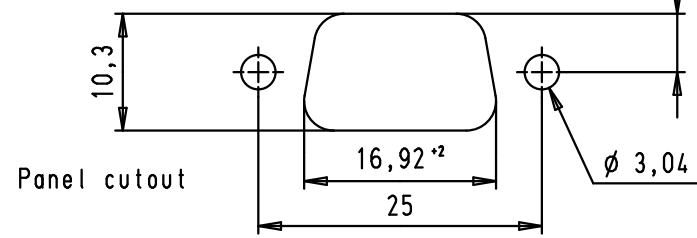
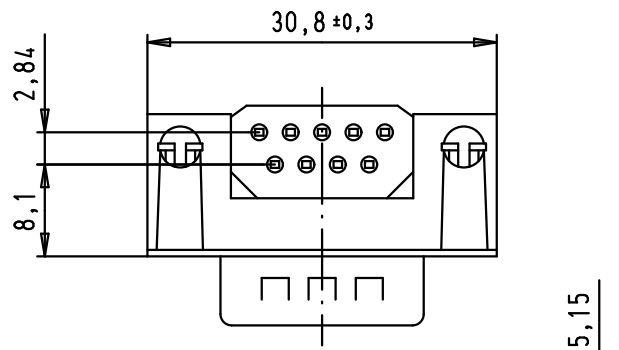
5 4 3 2 1



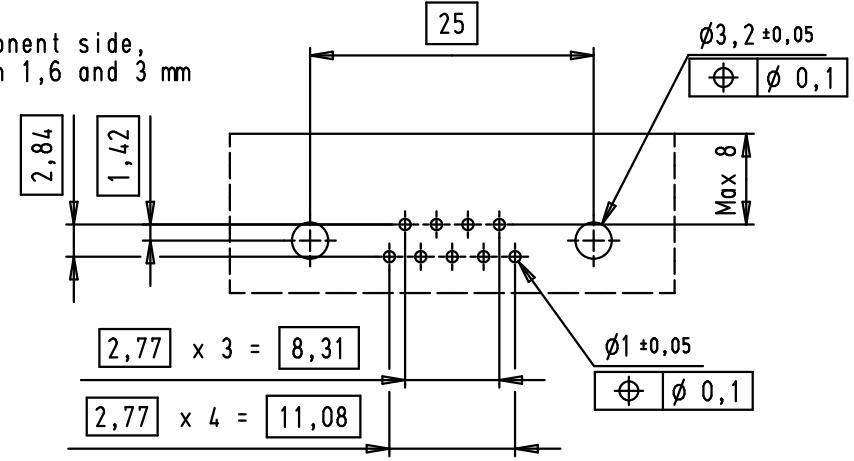
SPECIFICATIONS

FREQUENCY (MHz)	ATTENUATION (dB)
5	1
10	2
50	4
100	4,5
500	4,5
1000	4,5

Operating voltage < 250 V AC
 Working current < 7,5 A
 Insulation resistance > 1GΩ
 Contact resistance < 15 mΩ
 Dielectric withstanding voltage 500 V AC / minute



PCB layout, component side, thickness between 1,6 and 3 mm



A

			Dot.	Name	<p>All Dim. in mm Orig. Size DIN A 4</p>	
			Detail.	02/07/09		PK
			Insp.			
			Stand.			

D-Sub, male, angled, US footprint, 9 poles, tin plated shell with dimples, solder pins, ferrite filter

Maßstab/Scale
1,5:1

09 64 123 7802	PL3
Part number	Performance level

EC02296	06/09/10	SC
EC00362	02/07/09	PK
Mod.	Dot.	Name

HARTING EURL
F-95972 Paris



TB 09 64 123 7802
Sub.

Blatt/ Page
1 / 1