

311.06MHz SAW Filter
Part No: MA09368

Model: TA0615A
REV NO.: 2

A. MAXIMUM RATING:

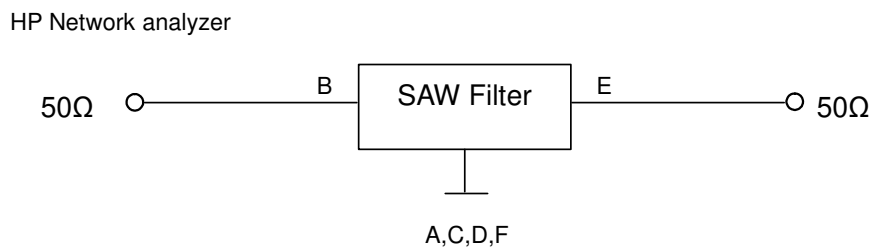
1. Input Power Level: 10dBm
2. DC voltage: 10V
3. Operating Temperature: -30°C to 85°C
4. Storage Temperature: -30°C to +85°C

B. CHARACTERISTICS:

Item		Unit	Specification		
			Min.	Typ.	Max.
Center Frequency	Fc	MHz	-	311.06	-
Insertion Loss	ILmin	dB	-	1.7	3.0
Bandwidth	BW _{-3dB}	MHz	2	6	-
Ripple	Fc ± 1MHz		-	1	1.5
VSWR	Fc ± 1MHz		-	1.5	-
Absolute Attenuation (reference to 0dB)					
Fc-11.7 ~ Fc-9.7	MHz	dB	40	45	-
Fc-22.4 ~ Fc-20.4	MHz	dB	50	55	-
Source impedance	Zs	Ω	-	50	-
Load impedance	ZL	Ω	-	50	-
Temperature coefficient		ppm/k		-37	

Note 1: No matching network required for operation at 50Ω

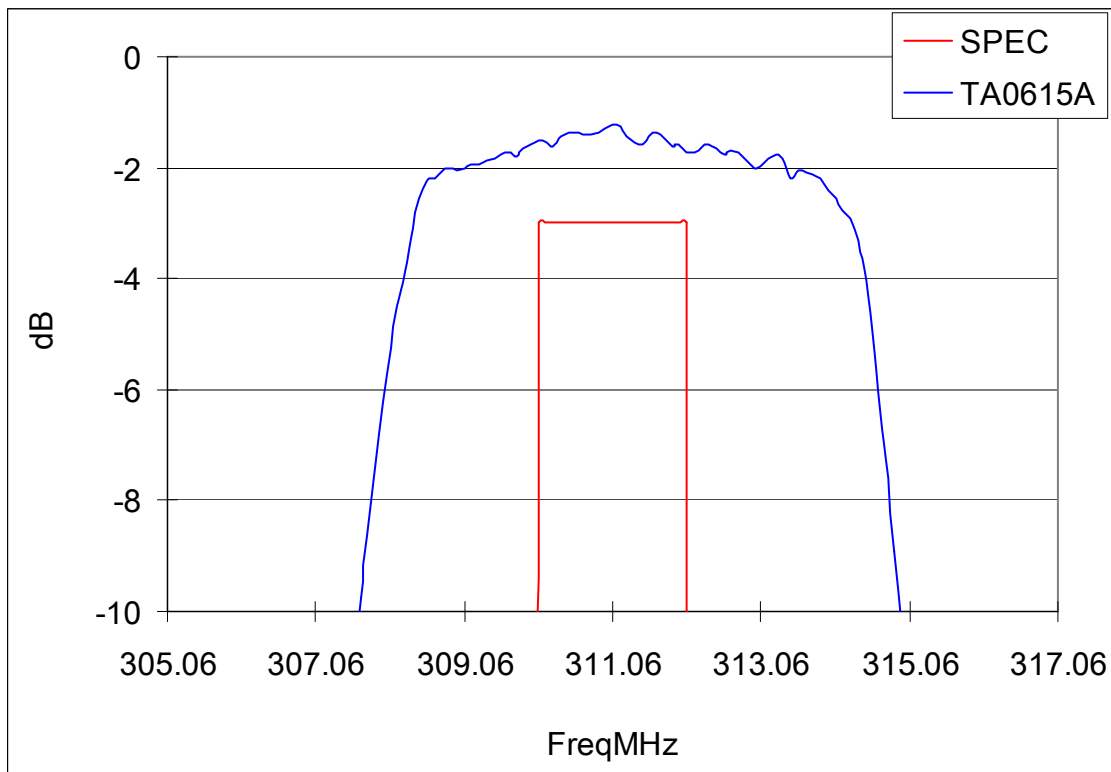
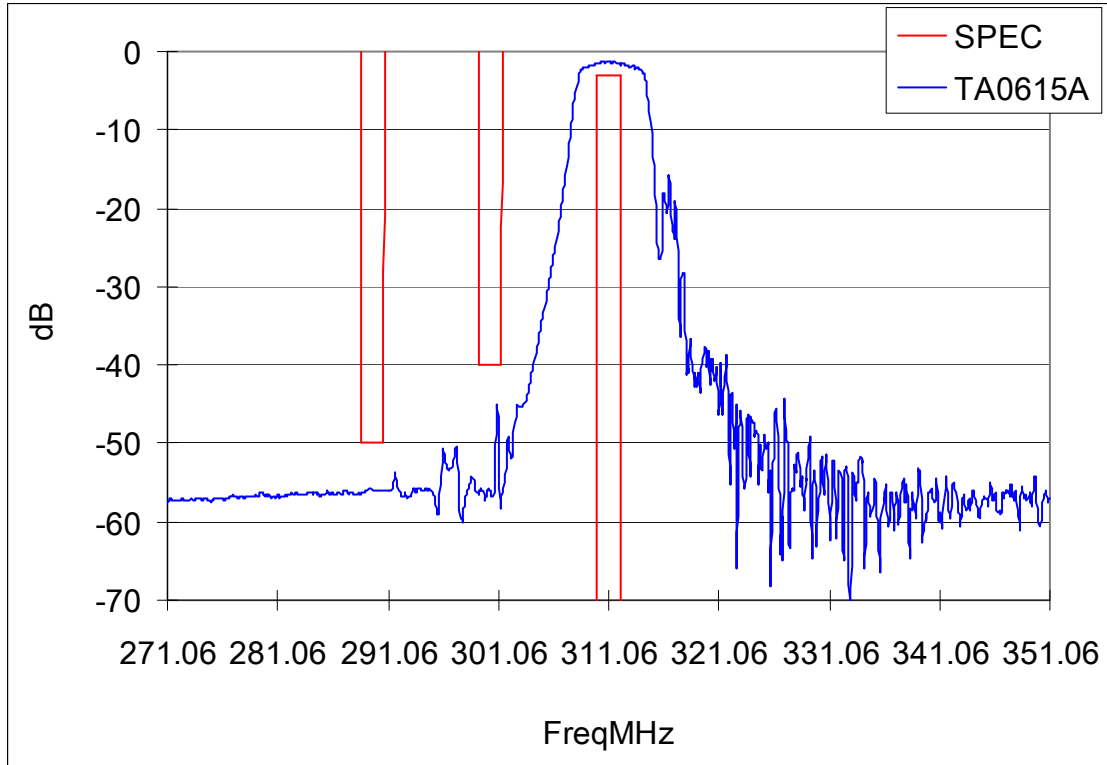
C. MEASUREMENT CIRCUIT:



311.06MHz SAW Filter
Part No: MA09368

Model: TA0615A
REV NO.: 2

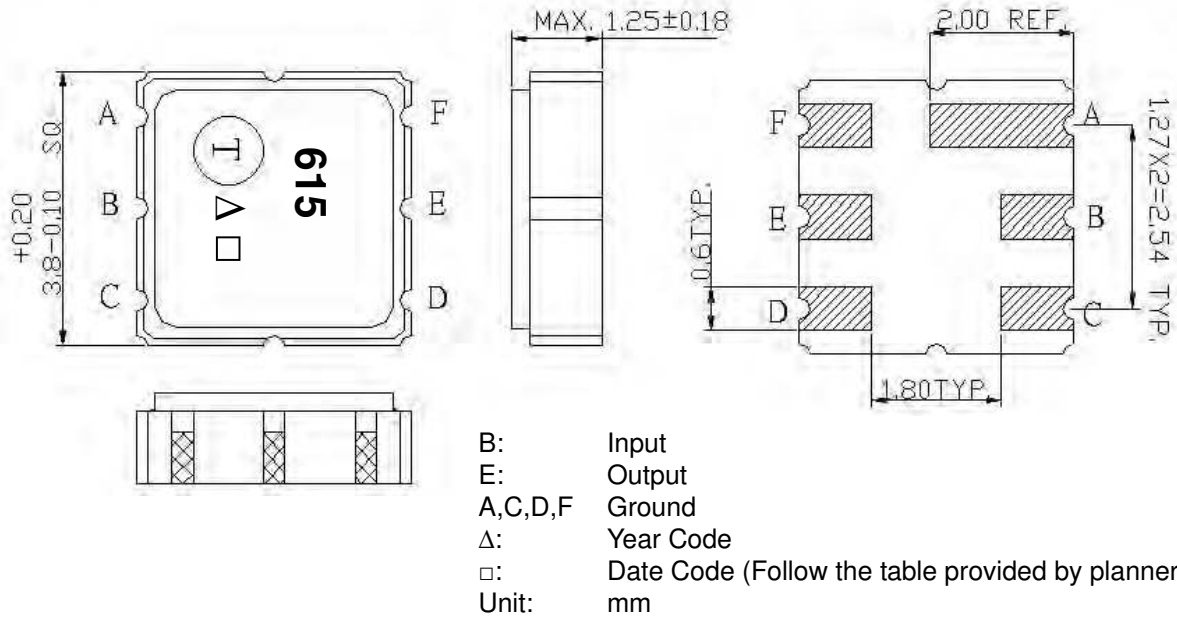
D. TRANSFER FUNCTION:



311.06MHz SAW Filter
Part No: MA09368

Model: TA0615A
REV NO.: 2

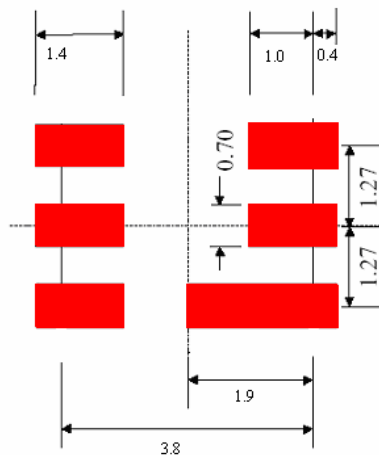
E. OUTLINE DRAWING:



Δ Product Year Code

Year	2005	2006
	2007	2008
	2009	2010
Product Code	A	a

F. PCB FOOTPRINT:

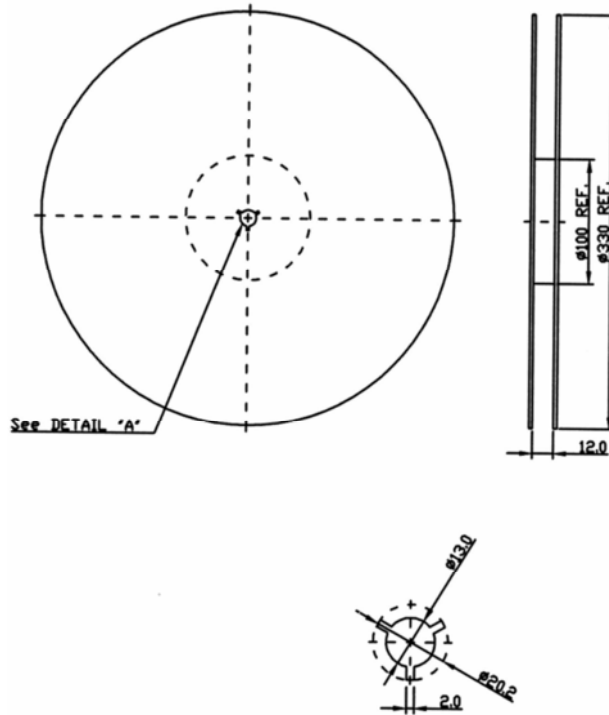


311.06MHz SAW Filter
Part No: MA09368

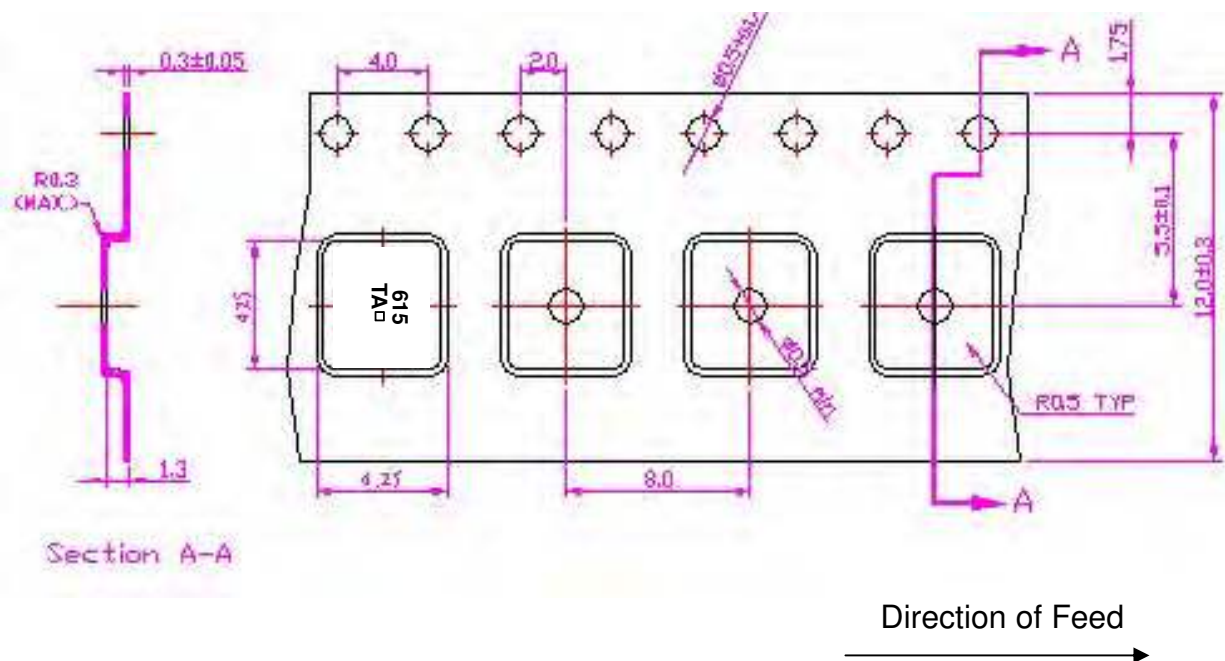
Model: TA0615A
REV NO.: 2

G. PACKING:

1. REEL DIMENSION



2. TAPE DIMENSION



311.06MHz SAW Filter
Part No: MA09368

Model: TA0615A
REV NO.: 2

H. REFLOW PROFILE:

