

****NOTE****
SEE PAGE 2 FOR BOARD LAYOUTS

CHARACTERISTICS
MATERIALS

- SHELL : BRASS
- SHELL PLATING : NICKEL
- NUT : BRASS
- NUT PLATING : NICKEL
- LATCH SLEEVE : BRASS
- LATCH SLEEVE PLATING : NICKEL
- CONTACTS : COPPER ALLOY
- CONTACT PLATING : 7μ" GOLD PLATED OVER 196μ" NICKEL MIN.
- INSULATOR : PPS (HIGH TEMPERATURE)
- O-RING: SILICONE

MECHANICAL

- DURABILITY: 5000 CYCLES
- OPERATING TEMP. RANGE: -40° C ~ +200° C
- PROCESS TEMPERATURE : 260°C FOR 5 SECONDS
- MAX. TORQUE VALUE : 9.0 Nm [79.0 IN/lbs]
- SHIELDING: 75dB @ 10MHz
- 40dB @ 1GHz

IP RATING: 67

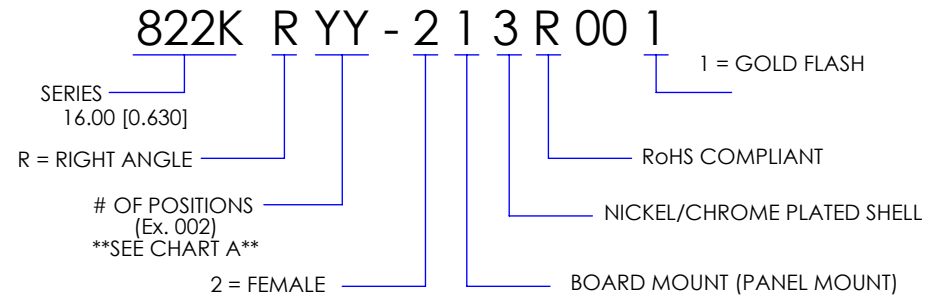
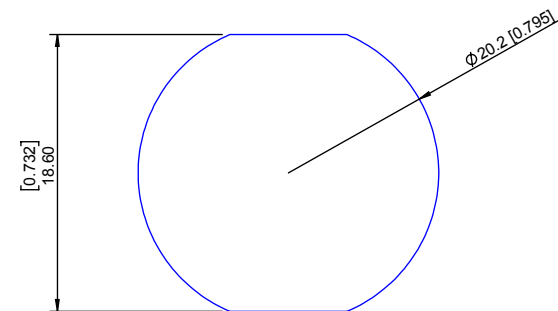


CHART A

● = KEY LOCATION

VIEW FROM TERMINATION END

<p>2 POSITION 12 AMP MAX. PIN Ø = 2.00 [0.079]</p> <p>CONTACT RESISTANCE = 3 mΩ TEST VOLTAGE = 2100V WORKING VOLTAGE = 700V</p>	<p>3 POSITION 12 AMP MAX. PIN Ø = 1.60 [0.063]</p> <p>CONTACT RESISTANCE = 4 mΩ TEST VOLTAGE = 2400V WORKING VOLTAGE = 800V</p>	<p>4 POSITION 12 AMP MAX. PIN Ø = 1.30 [0.051]</p> <p>CONTACT RESISTANCE = 5 mΩ TEST VOLTAGE = 1850V WORKING VOLTAGE = 615V</p>	<p>6 POSITION 12 AMP MAX. PIN Ø = 1.30 [0.051]</p> <p>CONTACT RESISTANCE = 5 mΩ TEST VOLTAGE = 1350V WORKING VOLTAGE = 450V</p>
---	---	---	---



PANEL CUTOUT

TOLERANCE = +0.10, -0.0
[+0.004, -0.00]

RoHS COMPLIANT



THESE DRAWINGS AND SPECIFICATIONS ARE THE PROPERTY OF NorComp AND SHALL NOT BE REPRODUCED, COPIED OR USED AS THE BASIS FOR THE MANUFACTURE OR SALE OF APPARATUS WITHOUT WRITTEN PERMISSION.

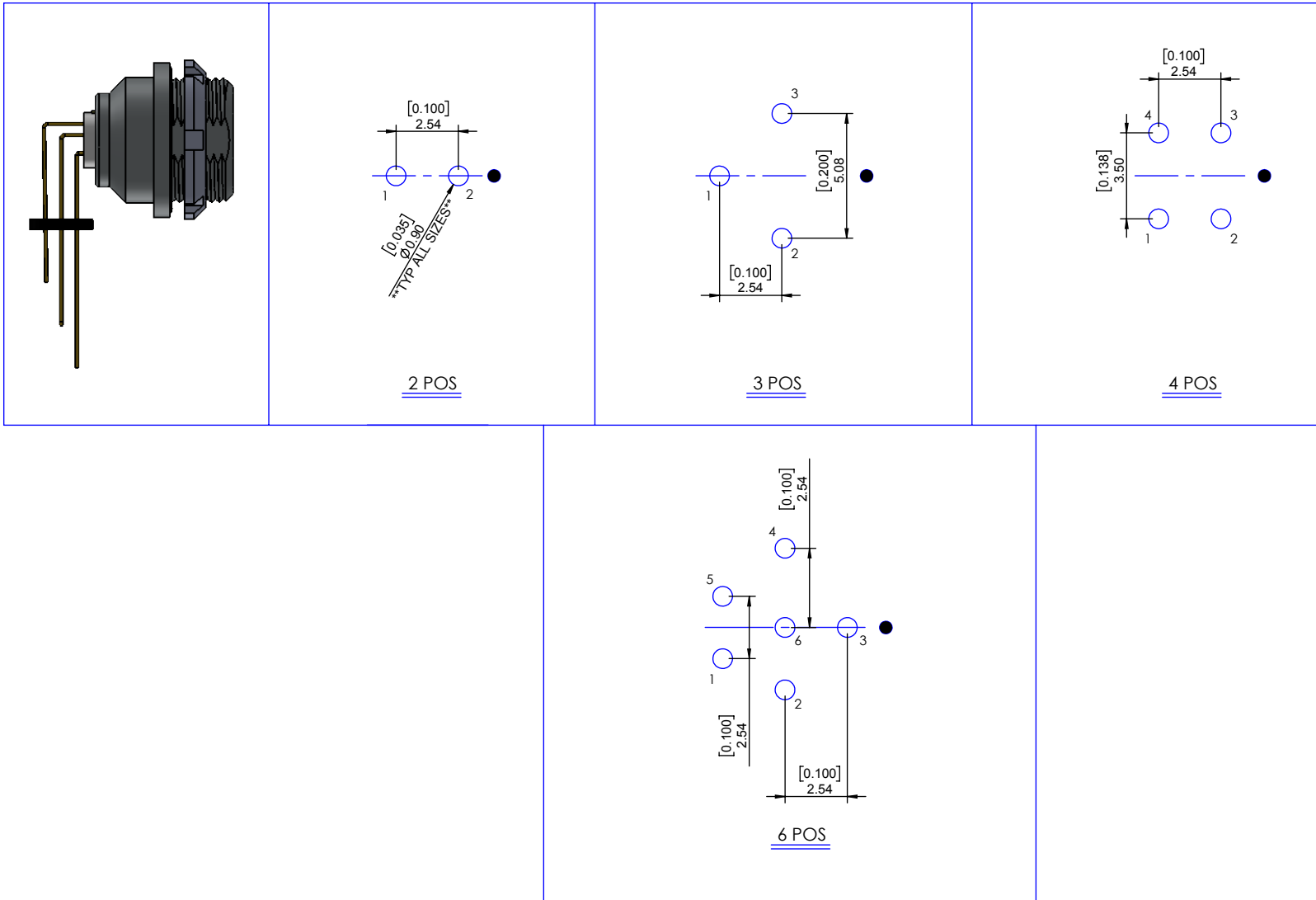
NorComp

DRAWN: M. SIGMON	DATE: 03-01-16	SCALE: N.T.S.	SHEET 1	OF 2	REV: 3
			DWG NO. 822KRY-213R001		

BOARD LAYOUTS

NOTE : **HOLE DIAMETERS ARE TYPICAL ALL SIZES**

● = KEY LOCATION



RoHS COMPLIANT



THESE DRAWINGS AND SPECIFICATIONS ARE THE PROPERTY OF NorComp AND SHALL NOT BE REPRODUCED, COPIED OR USED AS THE BASIS FOR THE MANUFACTURE OR SALE OF APPARATUS WITHOUT WRITTEN PERMISSION.

NorComp

DRAWN: M. SIGMON

DATE: 03-01-16

SCALE: N.T.S.

SHEET 2 OF 2

REV: 3

DWG NO. 822KRY-213R001