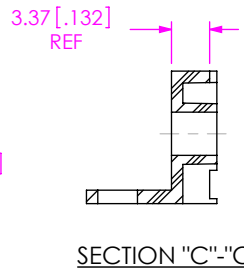
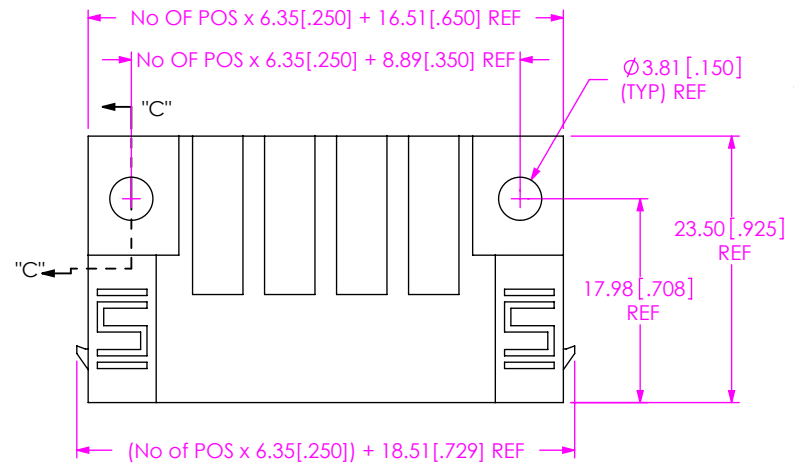


DO NOT SCALE FROM THIS PRINT

DESIGNED & DIMENSIONED IN MILLIMETERS [INCHES]

PET-XX-XX-X-RA-XX-XX



No OF POSITIONS  
-02, -04, -06, -08

LEAD STYLE  
-01: FOR 1.57 [ .062 ] THICK PCB (USE SUB-T-1M34-01-X)  
-02: FOR 3.18 [ .125 ] THICK PCB (USE SUB-T-1M34-02-X)

\* OPTION  
-LC: LOCKING CLIP (NOT AVAILABLE WITH -SD) (USE LC-11-TM) (SEE FIG 2, SHT 2)  
-SD: SCREW DOWN (NOT AVAILABLE WITH -LC) (SEE FIG 1, SHT 1)

OPTION  
-NL: NO LATCH EARS (SEE FIG 3, SHT 2)

RIGHT ANGLE

PLATING SPECIFICATION  
-S: SELECTIVE GOLD/MATTE TIN TAIL  
-T: MATTE TIN  
-L: LIGHT SELECTIVE GOLD/MATTE TIN TAIL

\* - BLANK ONLY FOR EXISTING CUSTOMERS

TABLE 1

STYLE	"A"	SUB-T-1M34-XX-X
-01	2.35 [ .093 ]	SUB-T-1M34-01-X
-02	3.95 [ .156 ]	SUB-T-1M34-02-X

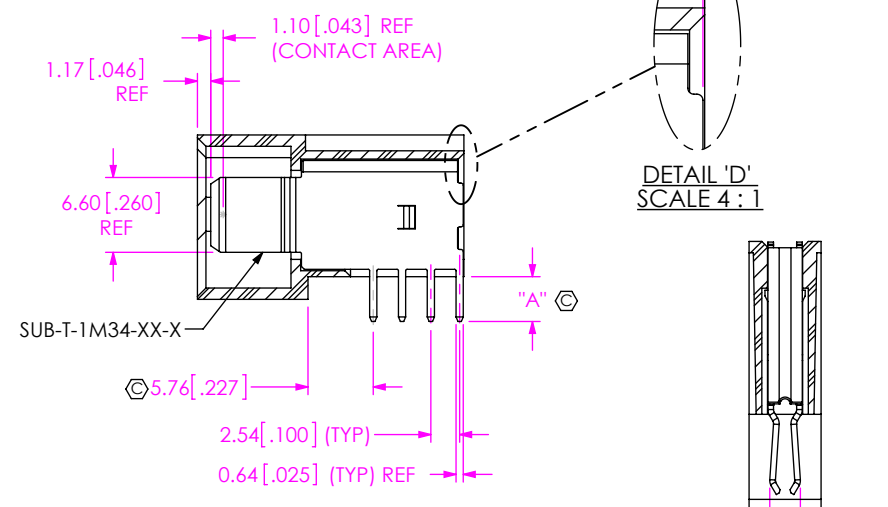
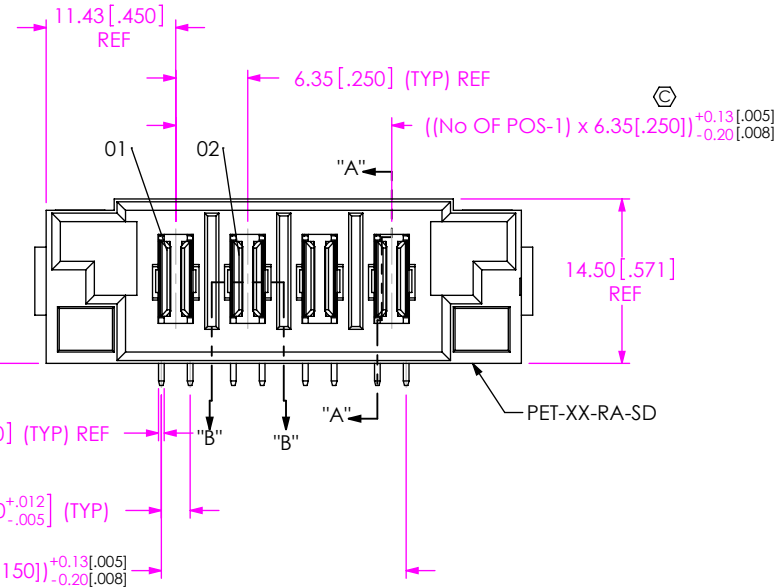


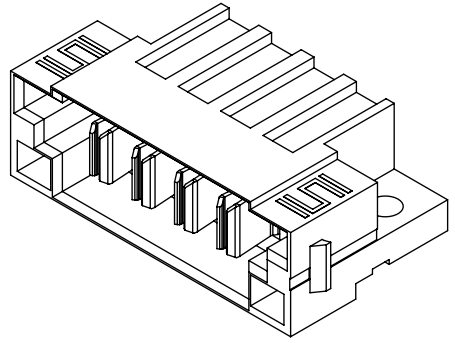
FIG 1  
PET-04-02-X-RA-SD SHOWN

SEE TABLE 2

TABLE 2

PART NUMBER	MAX
PET-02-XX-X-RA-XX	0.15 [ .006 ]
PET-04-XX-X-RA-XX	0.15 [ .006 ]
PET-06-XX-X-RA-XX	0.20 [ .008 ]
PET-08-XX-X-RA-XX	0.20 [ .008 ]

- NOTES:
1. REPRESENTS A CRITICAL DIMENSION.
  2. BURR ALLOWANCE: 0.038 [ .0015 ] MAX.
  3. MINIMUM PUSHOUT FORCE: 4.45N [ 1 LB ].
  4. PARTS TO BE PACKAGED IN TRAYS.
  5. IF EMPTY SPACE EXISTS IN THE TRAY POCKETS, INSERT A PLUG TP-07 TO PREVENT PARTS FROM SLIDING



UNLESS OTHERWISE SPECIFIED, DIMENSIONS ARE IN MILLIMETERS.

TOLERANCES ARE:  
DECIMALS ANGLES  
.X: ±0.3 [ .01 ] 2°  
.XX: ±0.13 [ .005 ]  
.XXX: ±0.051 [ .0020 ]

MATERIAL: DO NOT SCALE DRAWING SHEET SCALE: 1.5:1  
INSULATOR: LCP. COLOR: BLACK  
CONTACT: COPPER ALLOY

PROPRIETARY NOTE  
THIS DOCUMENT CONTAINS CONFIDENTIAL AND PROPRIETARY INFORMATION AND ALL DESIGN, MANUFACTURING, REPRODUCTION, USE, PATENT RIGHTS AND SALES RIGHTS ARE EXPRESSLY RESERVED BY SAMTEC, INC. THIS DOCUMENT SHALL NOT BE DISCLOSED, IN WHOLE OR PART, TO ANY UNAUTHORIZED PERSON OR ENTITY NOR REPRODUCED, TRANSFERRED OR INCORPORATED IN ANY OTHER PROJECT IN ANY MANNER WITHOUT THE EXPRESS WRITTEN CONSENT OF SAMTEC, INC.



520 PARK EAST BLVD, NEW ALBANY, IN 47150  
PHONE: 812-944-6733 FAX: 812-948-5047  
e-Mail: info@SAMTEC.com code: 55322

DESCRIPTION: RIGHT ANGLE POWER TERMINAL  
DWG. NO. PET-XX-XX-X-RA-XX-XX  
BY: CHAD F 3/28/2005 SHEET 1 OF 3

FIG 2  
 PET-04-02-X-RA-LC SHOWN  
 (SAME AS FIG 1, UNLESS OTHERWISE STATED)

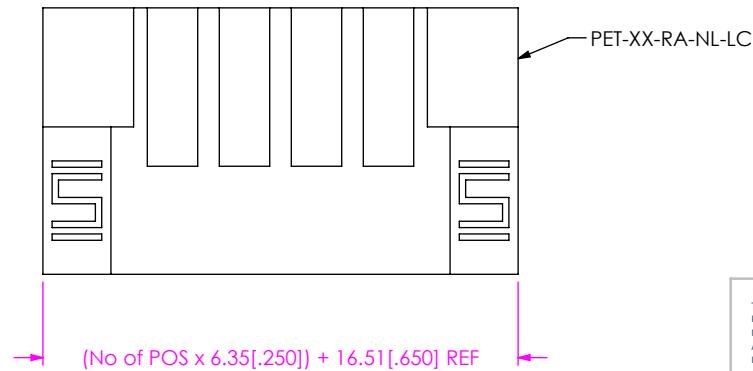
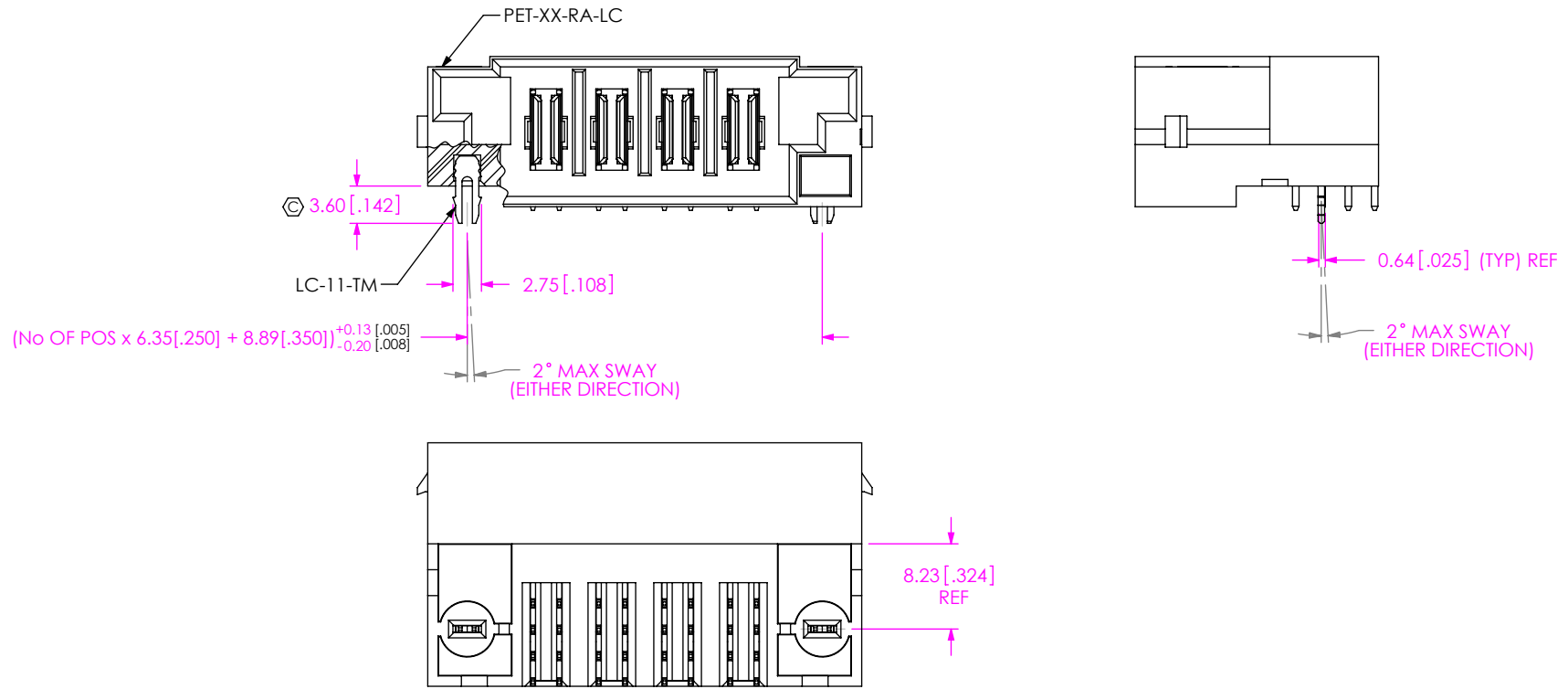
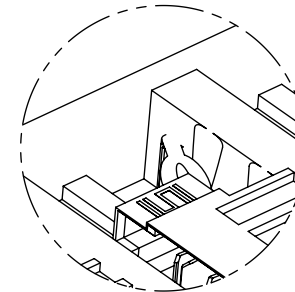
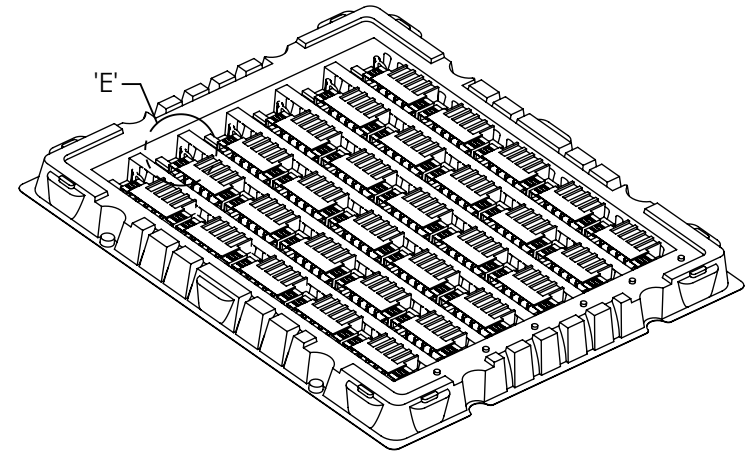
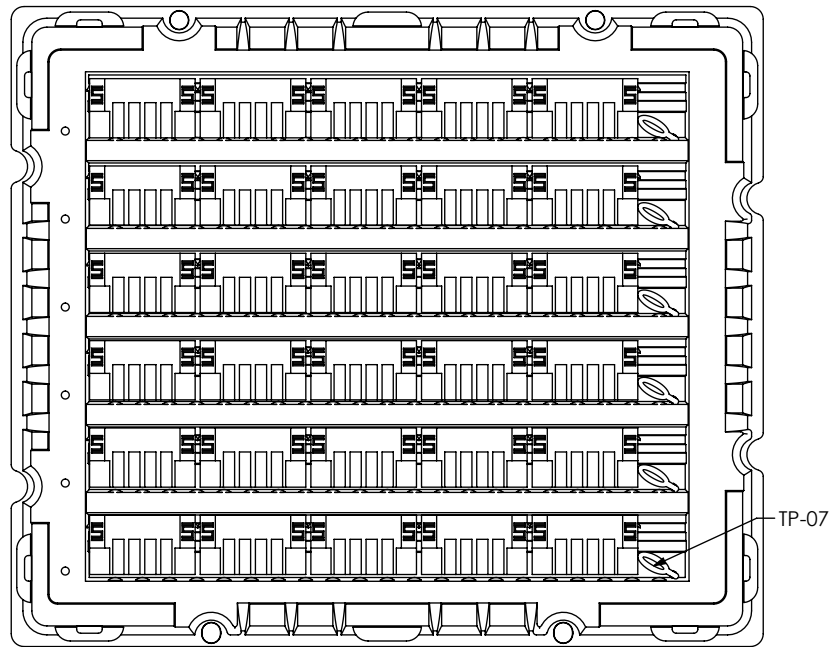


FIG 3  
 -NL: OPTION  
 PET-04-02-X-RA-NL-LC SHOWN  
 (SAME AS FIG 1, UNLESS OTHERWISE STATED)

<p>DO NOT SCALE DRAWING</p> <p>SHEET SCALE: 1.5:1</p>	<p><b>PROPRIETARY NOTE</b></p> <p>THIS DOCUMENT CONTAINS CONFIDENTIAL AND PROPRIETARY INFORMATION AND ALL DESIGN, MANUFACTURING, REPRODUCTION, USE, PATENT RIGHTS AND SALES RIGHTS ARE EXPRESSLY RESERVED BY SAMTEC, INC. THIS DOCUMENT SHALL NOT BE DISCLOSED, IN WHOLE OR PART, TO ANY UNAUTHORIZED PERSON OR ENTITY NOR REPRODUCED, TRANSFERRED OR INCORPORATED IN ANY OTHER PROJECT IN ANY MANNER WITHOUT THE EXPRESS WRITTEN CONSENT OF SAMTEC, INC.</p>	<p><b>samtec</b></p> <p>520 PARK EAST BLVD, NEW ALBANY, IN 47150                  PHONE: 812-944-6733 FAX: 812-948-5047                  e-Mail: info@SAMTEC.com code: 55322</p>
	<p>DESCRIPTION:</p> <p>RIGHT ANGLE POWER TERMINAL</p>	<p>DWG. NO.</p> <p>PET-XX-XX-X-RA-XX-XX</p>
	<p>BY: CHAD F 3/28/2005</p>	<p>SHEET 2 OF 3</p>



DETAIL 'E'  
SCALE 1:1

FIG 4  
PACKAGE IN TRAYS AS SHOWN  
TRAY VIEW  
(SEE NOTE 5)

<p><b>PROPRIETARY NOTE</b></p> <p>THIS DOCUMENT CONTAINS CONFIDENTIAL AND PROPRIETARY INFORMATION AND ALL DESIGN, MANUFACTURING, REPRODUCTION, USE, PATENT RIGHTS AND SALES RIGHTS ARE EXPRESSLY RESERVED BY SAMTEC, INC. THIS DOCUMENT SHALL NOT BE DISCLOSED, IN WHOLE OR PART, TO ANY UNAUTHORIZED PERSON OR ENTITY NOR REPRODUCED, TRANSFERRED OR INCORPORATED IN ANY OTHER PROJECT IN ANY MANNER WITHOUT THE EXPRESS WRITTEN CONSENT OF SAMTEC, INC.</p>	<p><b>samtec</b></p> <p>520 PARK EAST BLVD, NEW ALBANY, IN 47150          PHONE: 812-944-6733 FAX: 812-948-5047          e-Mail: info@SAMTEC.com code: 55322</p>
<p>DO NOT SCALE DRAWING</p>	<p>DESCRIPTION: RIGHT ANGLE POWER TERMINAL</p>
<p>SHEET SCALE: 1:3</p>	<p>DWG. NO. PET-XX-XX-X-RA-XX-XX</p>
<p></p>	<p>BY: CHAD F 3/28/2005 SHEET 3 OF 3</p>