

4

3

2

1


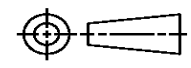
THIS DRAWING IS UNPUBLISHED. RELEASED FOR PUBLICATION  
© COPYRIGHT ALL RIGHTS RESERVED.

LOC	DIST	REVISIONS			
P	LTR	DESCRIPTION	DATE	DWN	APVD
	A1	ECR-18-005440	13APR18	GK	SD

# REPLACED BY OCEAN STYLE APPLICATOR PART NUMBER 2836809-1

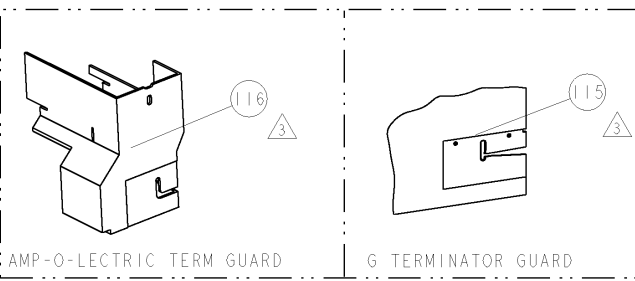
FOR REPLACEMENT PARTS FOR APPLICATOR 1852757 REFER TO ADDITIONAL PAGE(S). SPARE PARTS KIT (IF LISTED) WILL REMAIN AVAILABLE.

THE REPLACEMENT OCEAN STYLE APPLICATOR HAS THE SAME TERMINATOR/PRESS INTERFACE AS APPLICATOR 1852757

THIS DRAWING IS A CONTROLLED DOCUMENT.		DWN	GOPALAKRISHNA HV		 TE Connectivity
DIMENSIONS:		CHK	GOPALAKRISHNA HV		
		TOLERANCES UNLESS OTHERWISE SPECIFIED:		NAME	
		0 PLC ± 1 PLC ± 2 PLC ± 3 PLC ± 4 PLC ± ANGLES ±		SIDE FEED HDM APPLICATOR	
MATERIAL		FINISH		APVD	STOUGH DALE
				PRODUCT SPEC	
				APPLICATION SPEC	
		WEIGHT	SIZE	CAGE CODE	DRAWING NO
			A3		©- 1852757
		CUSTOMER DRAWING		SCALE	SHEET 1 OF 2 REV A1

PART NUMBER	REV	FIRST USED	POWER UNIT	FEED TYPE	DESCRIPTION
1852757-1	A	122500-1	LEADMAKER	POST FEED	CUTS CARRIER
1852757-2	A	565435-5	BENCH MODEL K	PRE FEED	CUTS CARRIER
1852757-3	A	354500-1	BENCH MODEL G	PRE FEED	CUTS CARRIER
1852757-6	A	122500-1	LEADMAKER	POST FEED	CONTINUOUS CARRIER
7-1852757-7	A	-	-	-	SPARE PARTS

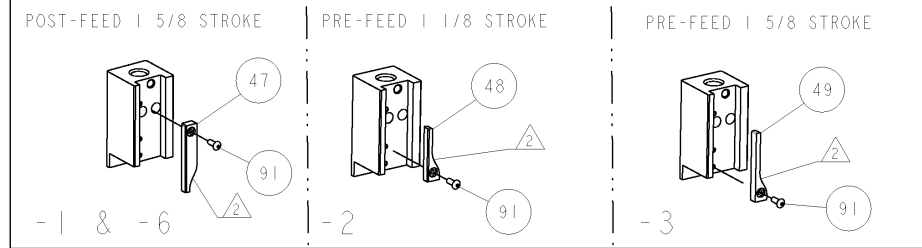
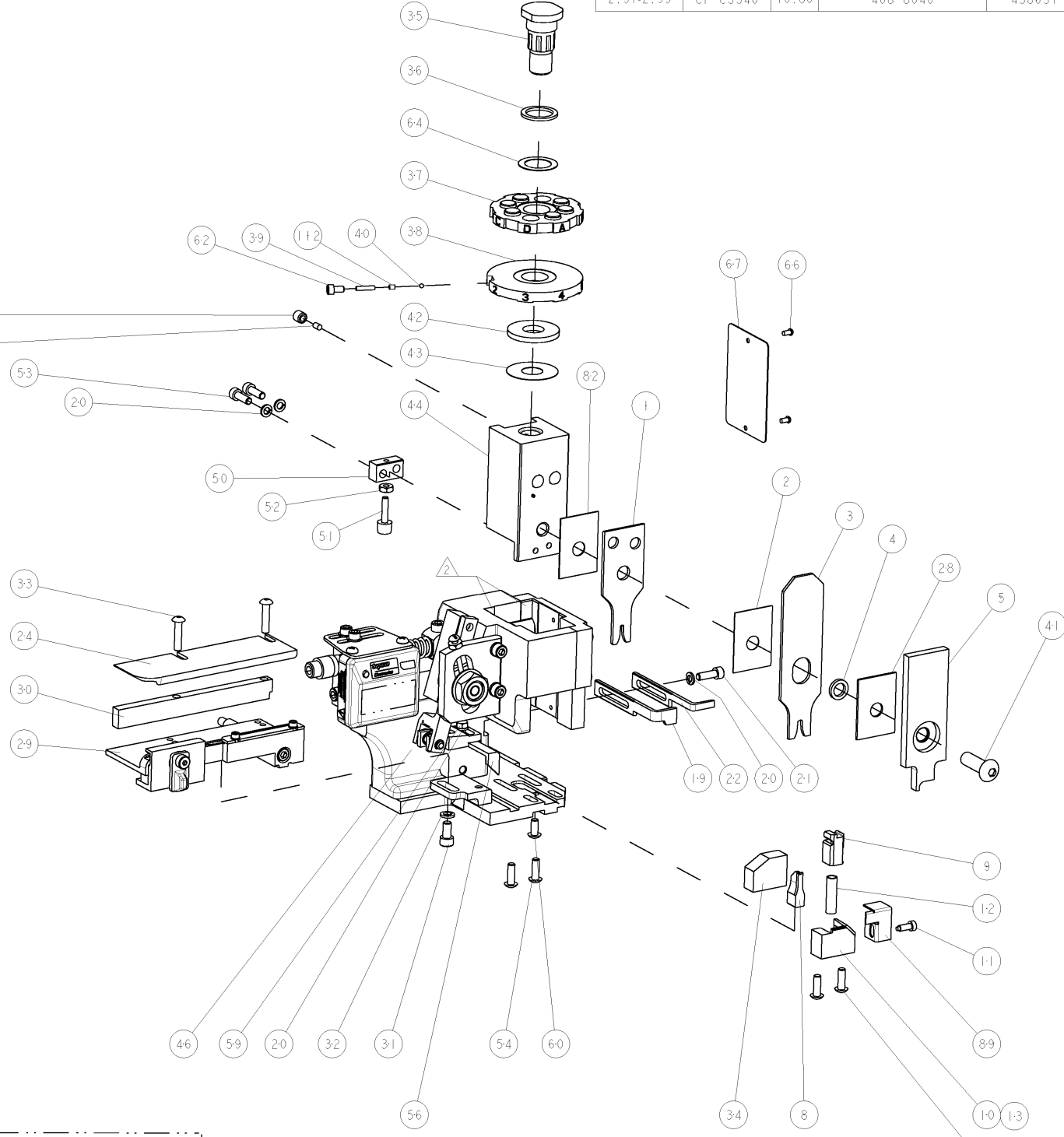
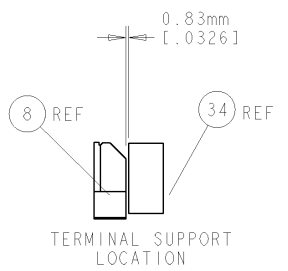
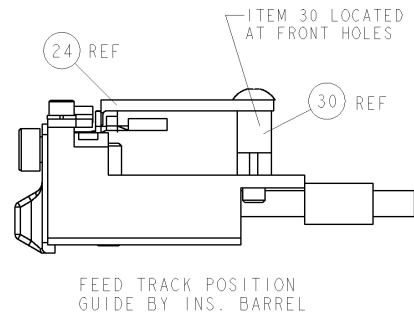
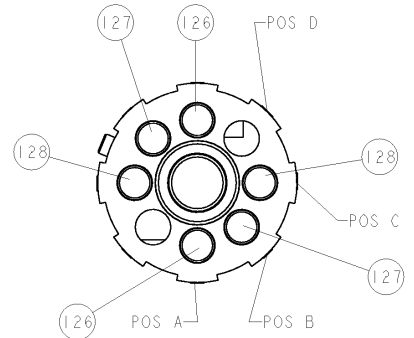
- △ RECOMMENDED SPARE PARTS
- △ GREASE LIGHTLY
- △ GUARD MUST BE IN PLACE WHEN OPERATING APPLICATOR IN A BENCH MACHINE



TERMINAL NAME: EL CONNECTOR CONTACT			
TE PN	JST	JST TERMINAL - JST CRIMP SPECS	
1949563-1	SLM-41T-PI.3E		
1949564-1	SLF-41T-PI.3E		
		PAD LTR	CRIMP HEIGHT
		A	1.10mm ± .05 [- .043 + .002 / - .002]
		B	1.00mm ± .05 [- .039 + .002 / - .002]
		C	0.95mm ± .05 [- .037 + .002 / - .002]
		D	-
		CRIMP	SIZE TYPE RANGE
		WIRE	1.96mm [.077] F 16-20 AWG
		INSUL	3.30mm [.130] OV Ø1.905 - 3.404
WIRE STRIP LENGTH	TERM APPL SPEC	FEED	APPLICATOR INSTRUCTIONS
2.57-2.95	CP-CS540	10.80	408-8040
			SET UP GAGE 458637-1

REVISONS		DATE	OWN	APPV
A	RELEASED	18DEC2008	LG	GB

-	2	2	2	2	-	3-354779-1	PIN, WIRE DISC, .3145	128
-	2	2	2	2	-	2-354779-7	PIN, WIRE DISC, .3125	127
-	2	2	2	2	-	1-354779-8	PIN, WIRE DISC, .3080	126
△	-	-	REF	-	...	455749-1	GUARD WINDOW	116
△	-	-	REF	-	...	679532-1	INSERT, GUARD	115
-	1	1	1	1	-	690603-1	SPRING ASSIST AMP-O-MATOR APPLICATOR	112
-	1	1	1	1	-	1-21002-7	SCR, BTN SKT HD CAP 6-32 X .375	91
-	1	1	1	1	-	318563-1	GUARD, FRONT CHIP	89
-	1	1	1	1	-	455888-5	SPACER, CRIMPER	82
-	1	1	1	1	-	4088040	SF APPL INST 408-8040	72
-	1	1	1	1	-	217238-1	GENERAL INSTRUCTION PKG	71
-	1	1	1	1	-	461264-1	PLATE, IDENTIFICATION	67
-	2	2	2	2	-	21017-2	SCREW, DRIVE	66
-	1	1	1	1	-	986950-1	WASHER, FLAT PRECISION	64
-	1	1	1	1	-	21009-2	SCR, SET, SELF LOCKING 1/4-20 X .250	63
-	1	1	1	1	-	23030-1	SCR, SKT HD CAP 6-32 X .25	62
-	1	1	1	1	-	22733-8	SCR, BHSC, SELF-LOCKING, 8-32 X .375	60
-	1	1	1	1	-	2-22603-0	SCR, HEX HD CAP 8-32 X .312	59
-	1	1	1	1	-	458537-2	PAWL, FEED	56
-	4	4	4	4	-	2-21002-2	SCR, BTN SKT HD CAP 8-32 X .500	54
-	2	2	2	2	-	2-21000-7	SCR, SKT HD CAP 8-32 X .500	53
-	1	1	1	1	-	21018-5	NUT, HEX, REG 6-32	52
-	1	1	1	1	-	811242-2	BUMPER, HOLD DOWN	51
-	1	1	1	1	-	690753-1	SPACER, TONKER	50
-	-	-	-	-	...	690602-6	CAM, PRE FEED, 1 5/8	49
-	-	-	-	-	...	690602-5	CAM, PRE FEED, 1 1/8	48
-	1	1	1	1	-	690501-4	CAM, POST-FEED 1 5/8	47
-	1	1	1	1	-	459456-1	APPL. BASIC SUB ASSY (SIDE WISE MOCA)	46
-	1	1	1	1	-	690191-1	PLUG, NYLON	45
-	1	1	1	1	-	455673-1	RAM, SIDE FEED	44
-	1	1	1	1	-	690125-1	SHIM SUB-ASSY	43
-	1	1	1	1	-	1-690124-4	WASHER, RAM (.120)	42
-	1	1	1	1	-	7-21002-9	SCR, BTN SKT HD CAP 5/16-24 X 1.00	41
-	1	1	1	1	-	23241-6	BALL, STEEL	40
-	1	1	1	1	-	690170-1	SPRING, COMPRESSION	39
-	1	1	1	1	-	690142-1	DISC, INSULATION	38
-	1	1	1	1	-	354777-1	WIRE DISC, ASSEMBLY	37
-	1	1	1	1	-	22480-5	SPRING, COMPRESSION	36
-	1	1	1	1	-	690212-1	POST, RAM	35
-	1	1	1	1	-	690786-1	TERMINAL SUPPORT	34
-	2	2	2	2	-	2-21002-4	SCR, BTN SKT HD CAP 8-32 X .750	33
-	1	1	1	1	-	21024-5	WASHER, SPRG LOCK, REG NO 10	32
-	1	1	1	1	-	3-21000-4	SCR, SKT HD CAP 10-32 X .375	31
-	1	1	1	1	-	1320908-4	SPACER, STRIP GUIDE	30
-	1	1	1	1	-	1633091-1	ASSEMBLY, STRIP GUIDE	29
-	1	1	1	1	-	1-455888-0	SPACER, CRIMPER	28
-	1	1	1	1	-	1320928-1	PLATE, STRIP GUIDE	24
-	1	1	1	1	-	690472-2	STRIPPER	22
-	1	1	1	1	-	2-21000-7	SCR, SKT HD CAP 8-32 X .500	21
-	4	4	4	4	-	21024-4	WASHER, SPRG LOCK, REG NO 8	20
-	-	-	-	-	...	691353-1	STRIPPER	19
△	-	-	-	-	...	679625-1	SHEAR HOLDER, FRONT (NO CUT)	13
△	-	-	-	-	...	3-22280-3	SPRING, COMPRESSION	12
△	-	-	-	-	...	690461-1	STOP, SHEAR	11
△	-	-	-	-	...	690459-1	SHEAR HOLDER, FRONT	10
△	-	-	-	-	...	454276-1	FLOATING SHEAR, FRONT	9
△	1	1	1	1	-	9-1633535-0	ANVIL, COMBINATION	8
-	-	-	-	-	...	-	-	7
-	-	-	-	-	...	-	-	6
-	1	1	1	1	-	1-455889-4	DEPRESSOR, SHEAR	5
-	1	1	1	1	-	238011-7	BLOCK, CRIMPER SPACER	4
△	1	1	1	1	-	2-854830-3	CRIMPER, INSULATION SPECIAL	3
-	1	1	1	1	-	455888-3	SPACER, CRIMPER	2
△	1	1	1	1	-	1633738-1	CRIMPER, WIRE	1



DIMENSIONS: INCHES		TOLERANCES UNLESS OTHERWISE SPECIFIED:		DRAWN: G. BAILEY		DATE: 20NOV2008		NAME: SIDE FEED HDM APPLICATOR	
0 PLC	± .01	1 PLC	± .005	2 PLC	± .002	3 PLC	± .001	4 PLC	± .0001
MATERIAL:		FINISH:		WEIGHT:		SCALE: 3:5		SHEET 1 OF 1	
CUSTOMER DRAWING		SCALE: 3:5		SHEET 1 OF 1		REV A		APPROVED: LG	