



Since 1959

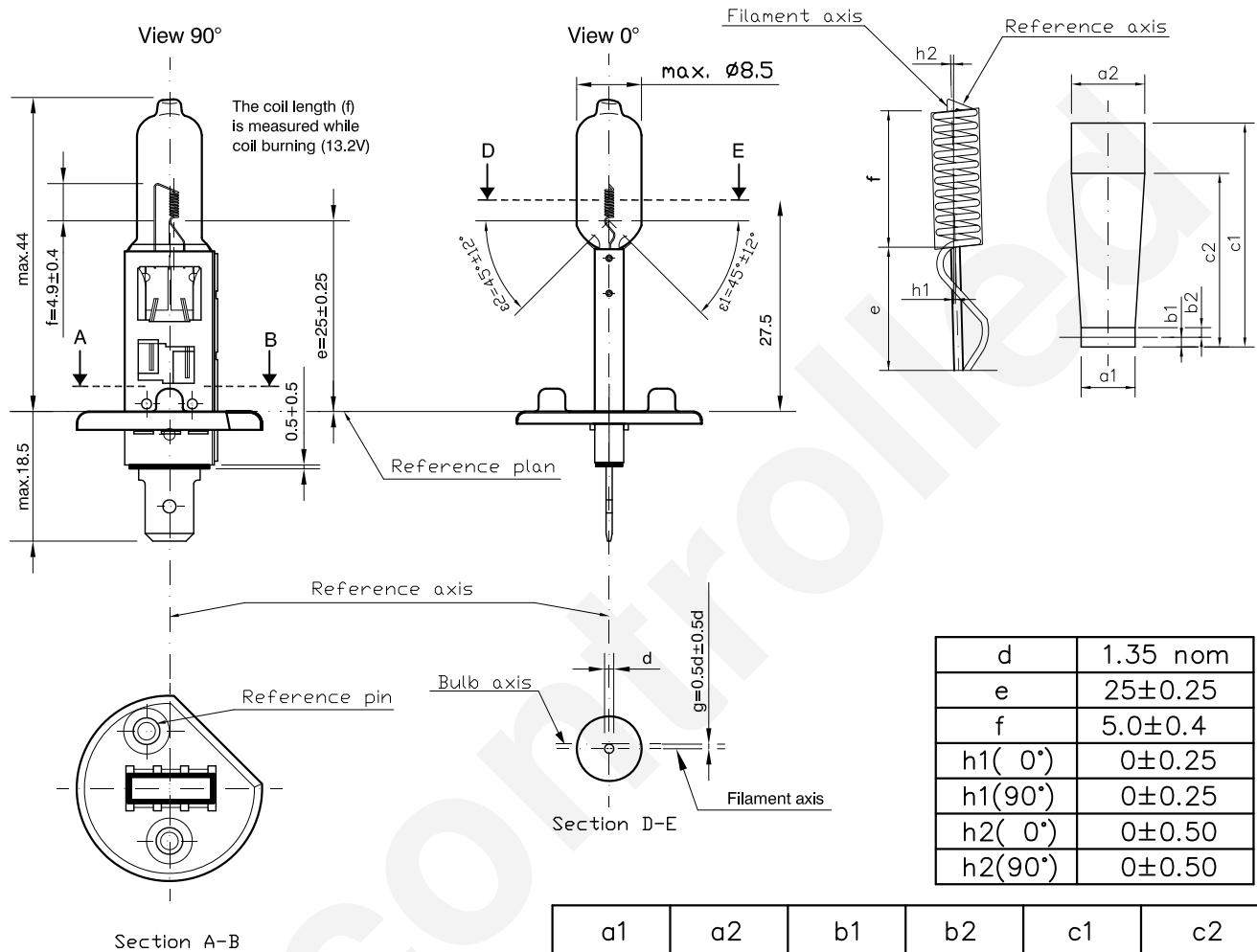
Product Information Sheet

H1 12V 55W

H1 55W

2014. 03. 05 NEW

2013. 09. 26 OLD



a1	a2	b1	b2	c1	c2
1.4d	1.9d	0.25	0.25	6	4.5

Technical data	R37	FMVSS108
Test voltage	13.2V	12.8V
Power	68W max.	65W max.
Luminous flux	1550lm ±15%	1410lm ±15%
Lumen maintenance	90 % min	90 % min
Rated life:	at 13.2V	at 14.0V
-characteristic Tc	530 h min	320h average
-B3	330 h min	

Maximum operating temperature:	1:bulb 800°C max
	2:pinch 400°C max

Halogen bulb

---

H1 STD 12V 55W

---

Cap: <sup>1)</sup> P14.5s

---

Type: STD

---

ECE R37 (E1) 2XP

---

FMVSS108 DOT

---

Bulb: UV-cut Quartz glass

---

Made in china/ JDH

1) according to IEC 61-1 sheet 7004-46-2