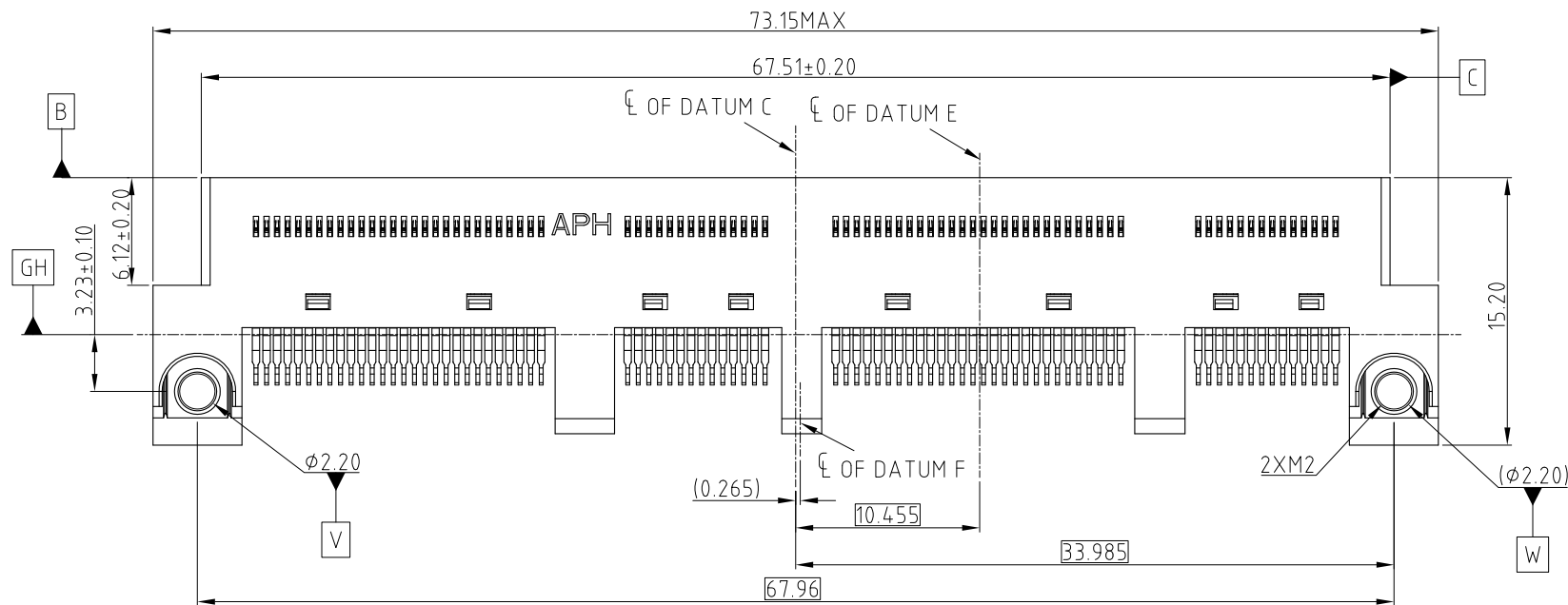
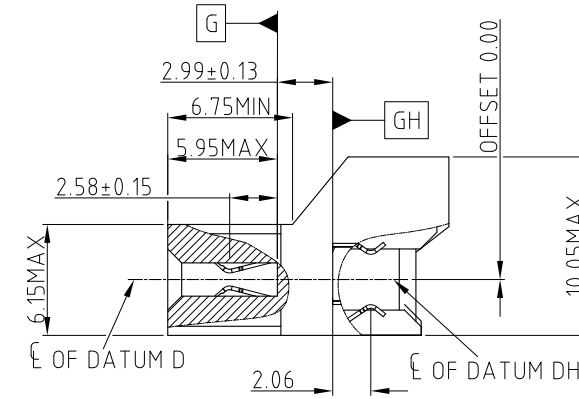
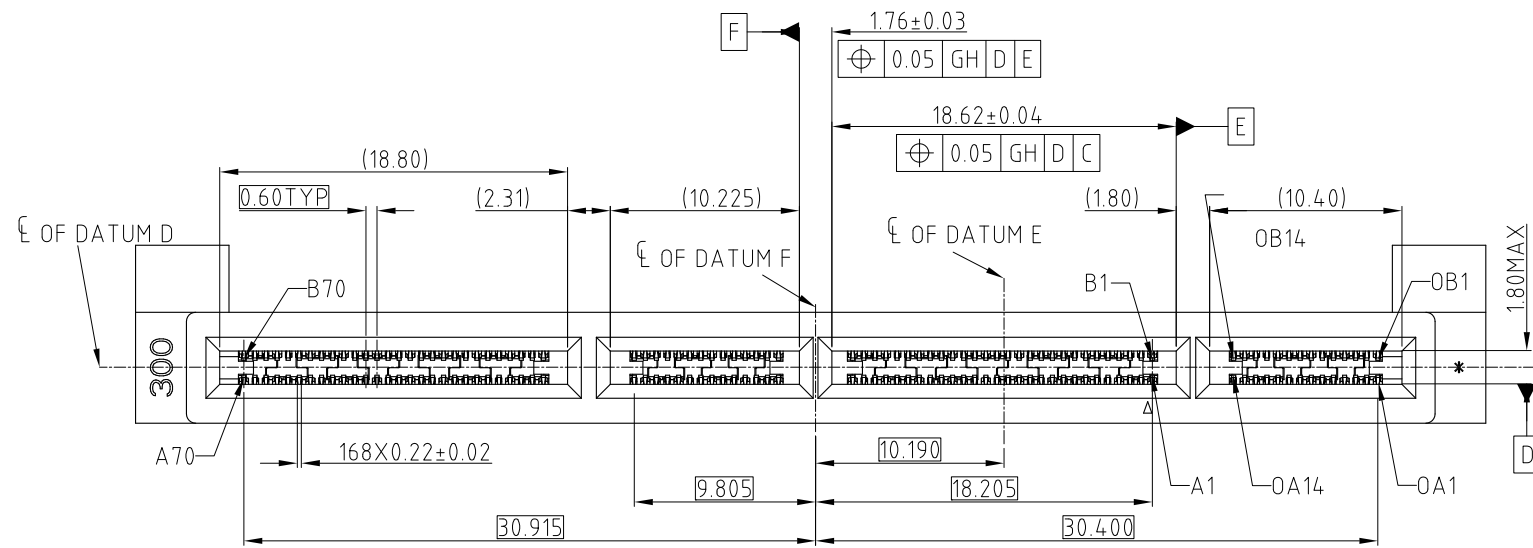


This document is the property of Amphenol Corporation and is delivered on the express condition that it is not to be disclosed, reproduced or used, in whole or in part, for manufacture or sale by anyone other than Amphenol Corporation without its prior consent, & that no right is granted to disclose or to use any information in this document.

CUSTOMER DRAWING

REVISIONS

| SYM | ECN | DESCRIPTION | DATE | APPROVED |
|-----|--------|---|-------------|----------|
| 1 | CDXXXX | PRELIMINARY PROPOSAL | Oct.15,2018 | YH |
| 2 | CDXXXX | THE THICKNESS OF HOUSING CHANGED TO 6.00MM | Mar.19,2019 | YH |
| 3 | CD1733 | THE OFFSET CHANGED FROM 0.3MM TO 0.00MM | Apr.02,2019 | YH |
| 4 | CD1819 | CHANGE NUT FROM STANDARD TO RECTANGLE AND ADD PACKING INFORMATION | Jul.08,2019 | YH |
| 5 | CD1857 | STANDARDIZE THE WAFER CONSTRUCTURE | Sep.25,2019 | YH |



NOTE:

- MATERIAL:**
HOUSING: HIGH TEMPERATURE THERMOPLASTIC BLACK UL94-V0
CONTACT: COPPER ALLOY
NUT: STAINLESS STEEL
- PLATING:**
CONTACT: MATING AREA: Au THICKNESS PLEASE REFER TO PN SYSTEM, 1.27-2.54 μm NICKEL UNDERPLATED
SOLDER AREA: 1.27 μm MIN TIN OVER 1.27-2.54 μm NICKEL UNDERPLATED
- ELECTRICAL PERFORMANCE:**
RATED CURRENT: 1.1A/PIN UP TO 12PINS
LLCR: 30mΩ MAX, DELTA 15 mΩ.
INSULATION RESISTANCE: 1000MΩ MIN
- DURABILITY:** 200 CYCLES.
- MATERIAL SHOULD BE FULFILLED AMPHENOL SPEC#S-SN-004**
- ORDERING PN: REFER TO THE PN SYSTEM ME101681340X41X**

| SCREW | PLATING SPEC |
|------------------|--------------|
| 1 WITHOUT SCREWS | 1 0.76um Au |
| 2 WITH SCREWS | 2 0.38um Au |
| | 3 GOLD FLASH |
| | 4 0.76GXT |
| | 5 0.38GXT |

| UNLESS OTHERWISE SPECIFIED TOLERANCES | |
|---------------------------------------|--------|
| U.S. | METRIC |
| .X +/- | 0.25 |
| .XX +/- | 0.20 |
| .XXX +/- | 0.15 |
| FRACTIONS +/- | 5° |
| ANGLES +/- | |

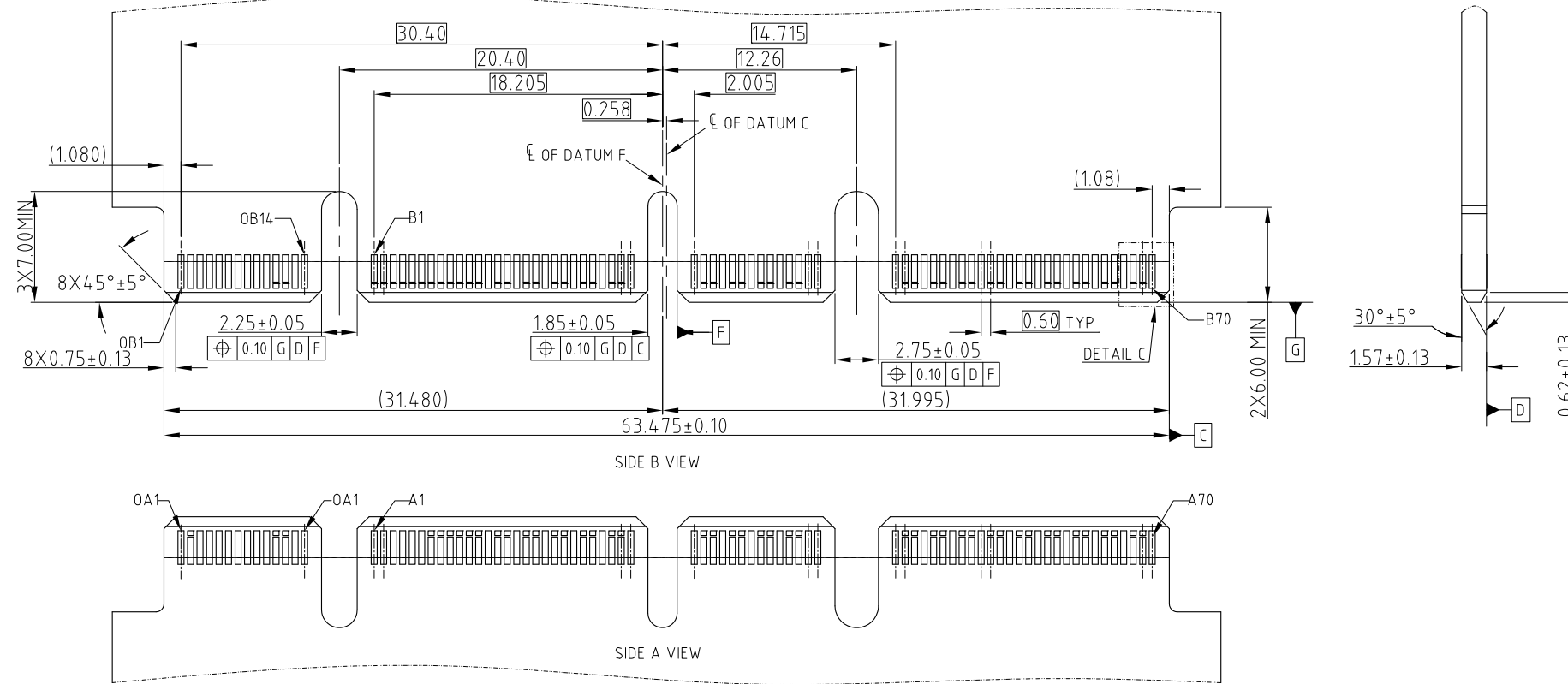
| APPROVAL | | DATE |
|-------------------------------|--------|-------------|
| DRAWN | Johnny | Sep.25,2019 |
| CHECKED | Ly.Yi | Sep.25,2019 |
| APPROVED | | |
| DRAWING FILE : | | |
| INTERNAL\ME\C ME101681340X41X | | |
| ANGLE OF PROJECTION | | |
| | | |

| Amphenol | | |
|---|-----------------|--------------|
| TITLE | | |
| MINI COOL EDGE 168P STRADDLE MOUNT MATE 3.00PCB 0.00 OFFSET | | |
| SIZE | DRAWING NO. | REV. |
| A3C | ME101681340X41X | 5 |
| SCALE | NONE | SHEET 1 OF 4 |

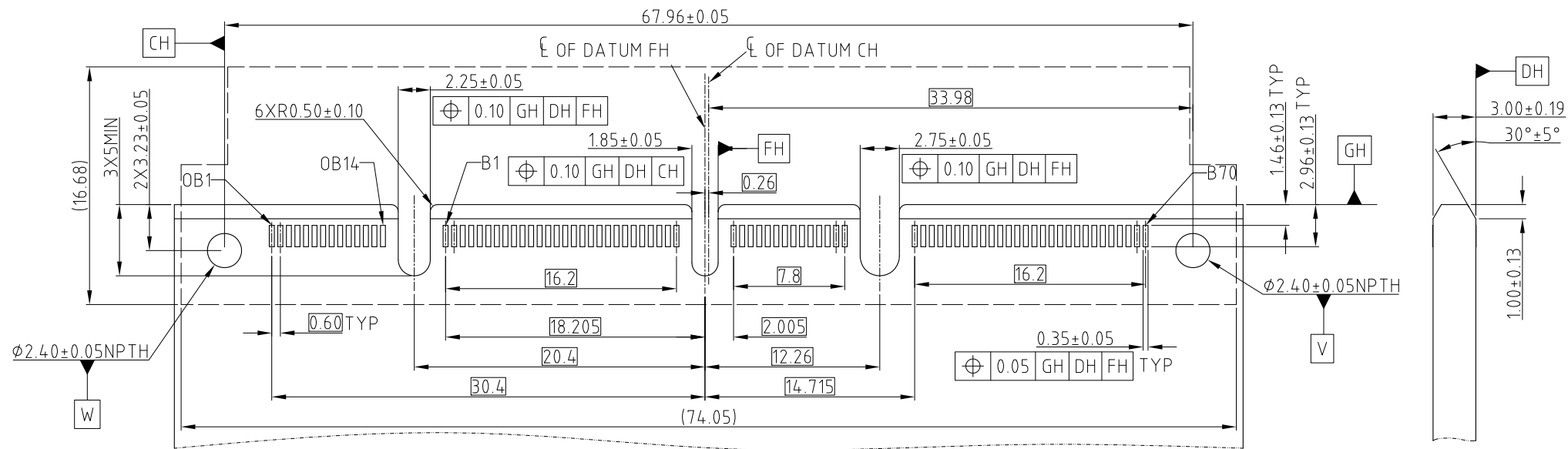
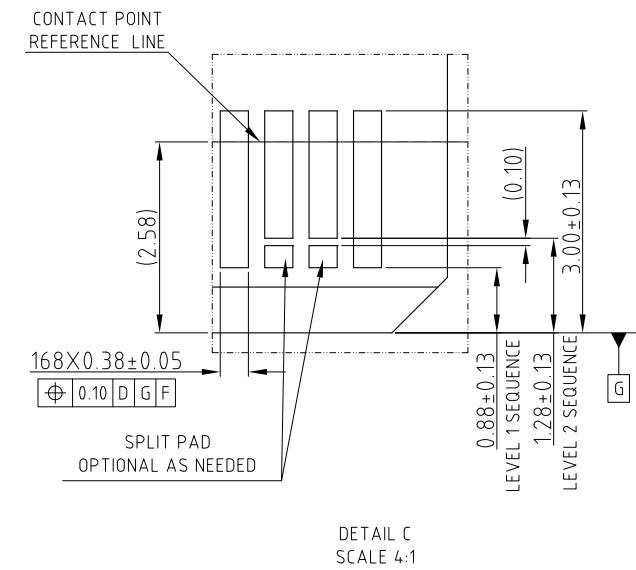
This document is the property of Amphenol Corporation and is delivered on the express condition that it is not to be disclosed, reproduced or used, in whole or in part, for manufacture or sale by anyone other than Amphenol Corporation without its prior consent, & that no right is granted to disclose or to use any information in this document.

CUSTOMER DRAWING

| REVISIONS | | | | |
|-----------|-----|-------------|------|----------|
| SYM | ECN | DESCRIPTION | DATE | APPROVED |
| | | SEE SHEET 1 | | |



NOTE: POSITION A1 ON OPPOSITE SIDE OF CARD OF B1
RECOMMENDED MATING CARD



NOTE: POSITION A1 ON THE OPPOSITE SIDE OF CARD OF B1
168PIN STRADDLE MOUNT FOOTPRINT

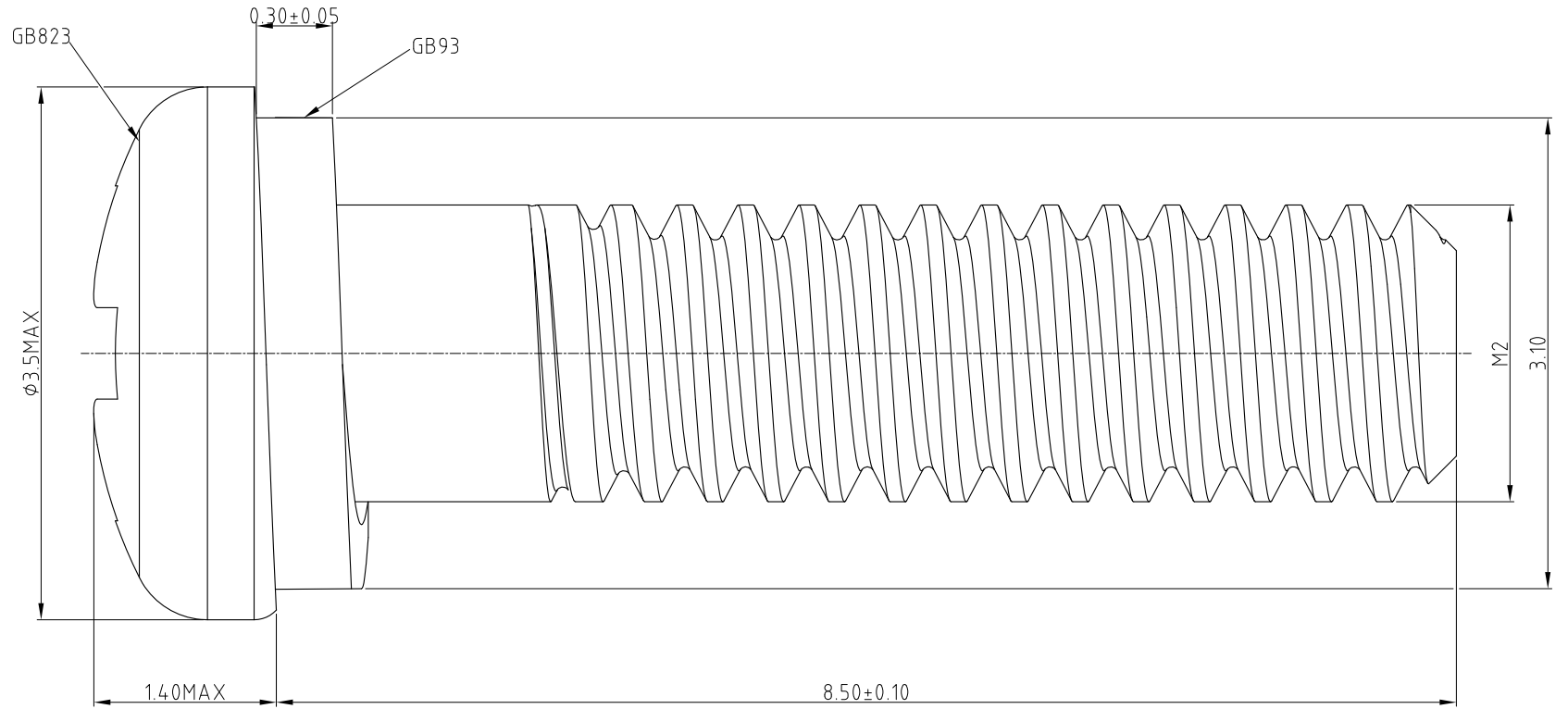
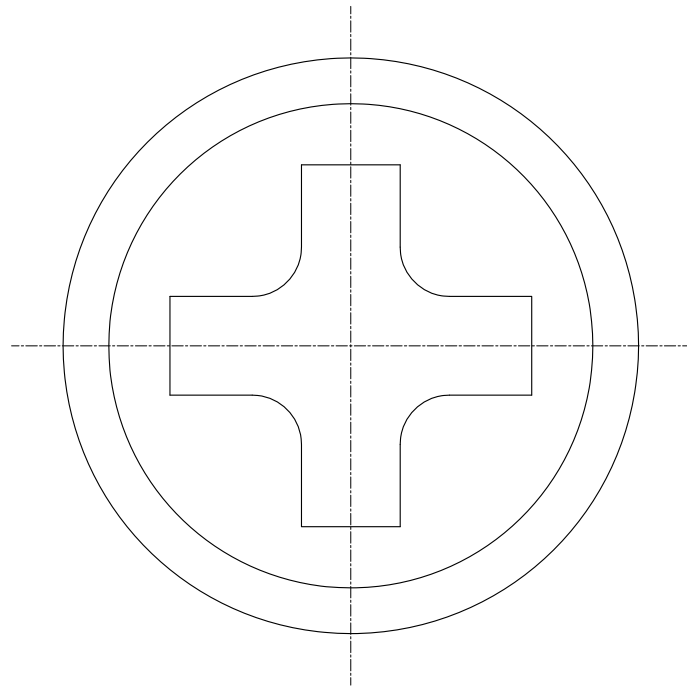


| | | | |
|---|--|---|---|
| UNLESS OTHERWISE SPECIFIED TOLERANCES U.S. METRIC .X +/- 0.25 .XX +/- 0.20 .XXX +/- 0.15 FRACTIONS +/- ANGLES +/- 5° FOR MATERIALS AND FINISHES SEE NOTES REMOVE SHARP EDGES DIMENSIONS —U.S.— INCHES (METRIC) (mm) | APPROVAL DRAWN Johnny CHECKED Ly.Yi APPROVED | DATE Sep.25,2019 Sep.25,2019 | Amphenol TITLE MINI COOL EDGE 168P STRADDLE MOUNT MATE 3.00PCB 0.00 OFFSET SIZE DRAWING NO. REV. A3 C ME101681340X41X 5 SCALE NONE SHEET 2 OF 4 |
| | DRAWING FILE : INTERNAL\ME\C ME101681340X41X | | |
| | ANGLE OF PROJECTION | | |
| | | | |

This document is the property of Amphenol Corporation and is delivered on the express condition that it is not to be disclosed, reproduced or used, in whole or in part, for manufacture or sale by anyone other than Amphenol Corporation without its prior consent, & that no right is granted to disclose or to use any information in this document.

CUSTOMER DRAWING

| REVISIONS | | | | |
|-----------|-----|-------------|------|----------|
| SYM | ECN | DESCRIPTION | DATE | APPROVED |
| | | SEE SHEET 1 | | |



SCREW

NOTE:

1. MATERIAL: SUS304
2. DIMENSIONS CONFORM TO GB823, GB93,
3. THE TORQUE 0.17N.M MAX



| UNLESS OTHERWISE SPECIFIED TOLERANCES | |
|---------------------------------------|--------|
| U.S. | METRIC |
| .X +/- | 0.25 |
| .XX +/- | 0.20 |
| .XXX +/- | 0.15 |
| FRACTIONS +/- | 5° |
| ANGLES +/- | |

FOR MATERIALS AND FINISHES SEE NOTES

REMOVE SHARP EDGES

| DIMENSIONS | |
|------------|--------|
| —U.S.— | INCHES |
| (METRIC) | (mm) |

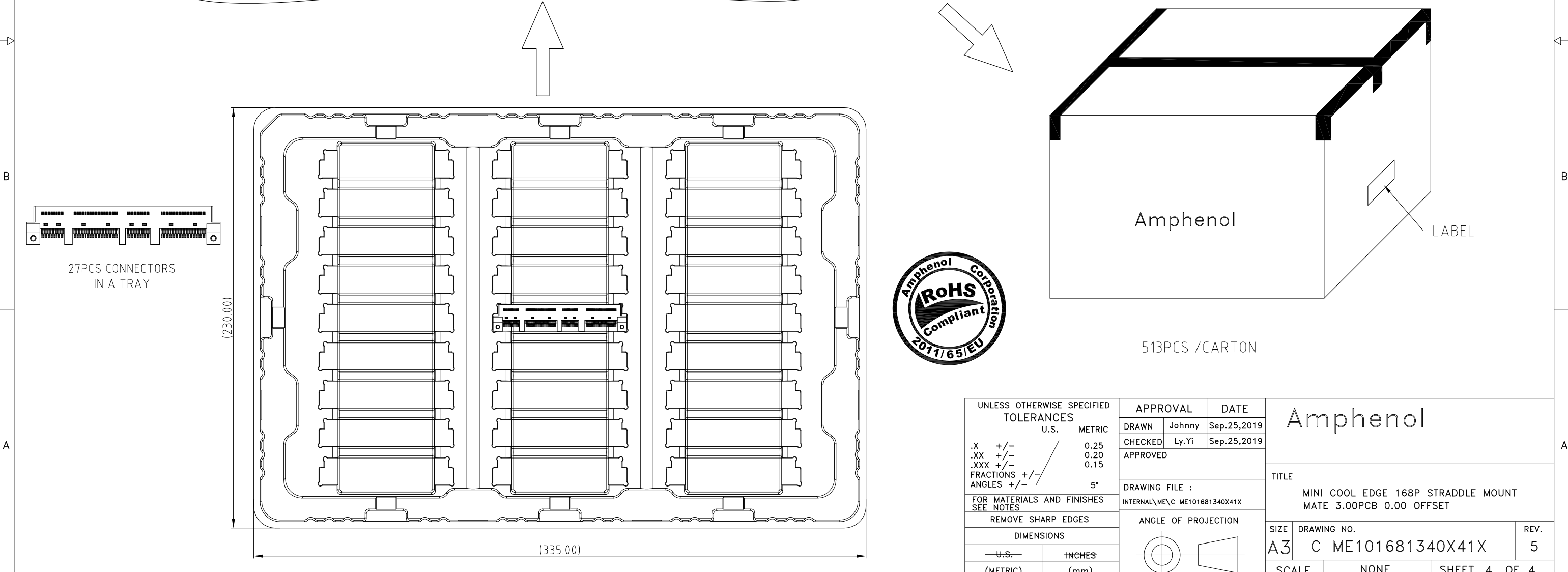
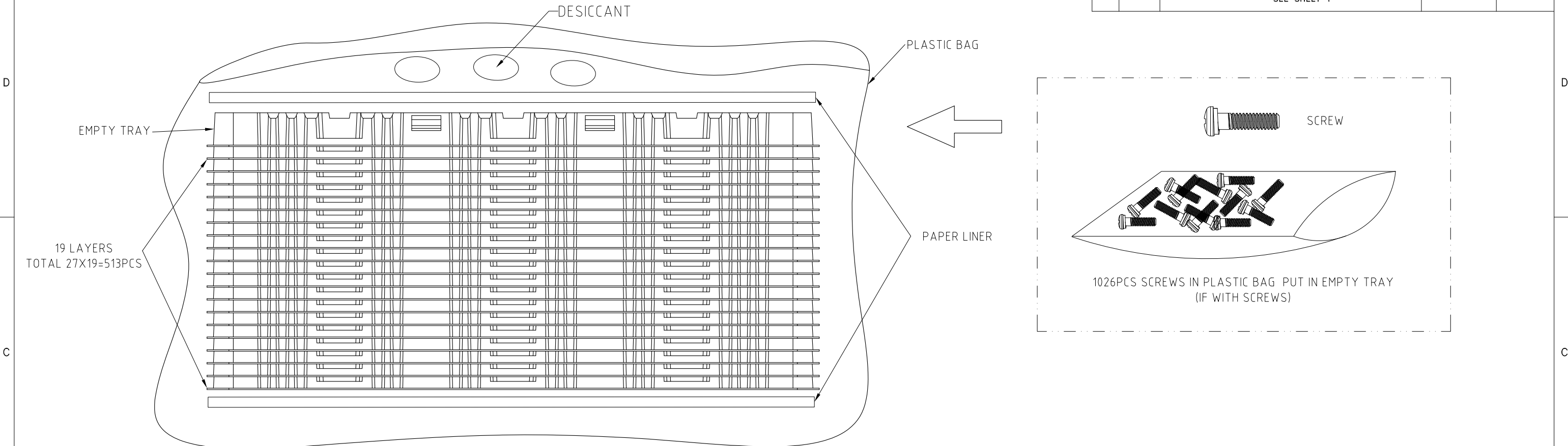
| APPROVAL | | DATE |
|-------------------------------|--------|-------------|
| DRAWN | Johnny | Sep.25,2019 |
| CHECKED | Ly.Yi | Sep.25,2019 |
| APPROVED | | |
| DRAWING FILE : | | |
| INTERNAL\ME\C ME101681340X41X | | |
| ANGLE OF PROJECTION | | |
| | | |

| | | |
|------------------------------------|-------------------|--------------|
| Amphenol | | |
| TITLE | | |
| MINI COOL EDGE 168P STRADDLE MOUNT | | |
| MATE 3.00PCB 0.00 OFFSET | | |
| SIZE | DRAWING NO. | REV. |
| A3 | C ME101681340X41X | 5 |
| SCALE | NONE | SHEET 3 OF 4 |

This document is the property of Amphenol Corporation and is delivered on the express condition that it is not to be disclosed, reproduced or used, in whole or in part, for manufacture or sale by anyone other than Amphenol Corporation without its prior consent, & that no right is granted to disclose or to use any information in this document.

CUSTOMER DRAWING

| REVISIONS | | | | |
|-----------|-----|-------------|------|----------|
| SYM | ECN | DESCRIPTION | DATE | APPROVED |
| | | SEE SHEET 1 | | |



| | |
|---------------------------------------|--------|
| UNLESS OTHERWISE SPECIFIED TOLERANCES | |
| U.S. | METRIC |
| .X +/- | 0.25 |
| .XX +/- | 0.20 |
| .XXX +/- | 0.15 |
| FRACTIONS +/- | |
| ANGLES +/- | 5° |
| FOR MATERIALS AND FINISHES SEE NOTES | |
| REMOVE SHARP EDGES | |
| DIMENSIONS | |
| —U.S.— | INCHES |
| (METRIC) | (mm) |

| | |
|-------------------------------|-------------|
| APPROVAL | DATE |
| DRAWN Johnny | Sep.25,2019 |
| CHECKED Ly.Yi | Sep.25,2019 |
| APPROVED | |
| DRAWING FILE : | |
| INTERNAL\ME\C ME101681340X41X | |
| ANGLE OF PROJECTION | |
| | |

| | | |
|--|-------------------|--------------|
| Amphenol | | |
| TITLE | | |
| MINI COOL EDGE 168P STRADDLE MOUNT MATE 3.00PCB 0.00 OFFSET | | |
| SIZE | DRAWING NO. | REV. |
| A3 | C ME101681340X41X | 5 |
| SCALE | NONE | SHEET 4 OF 4 |