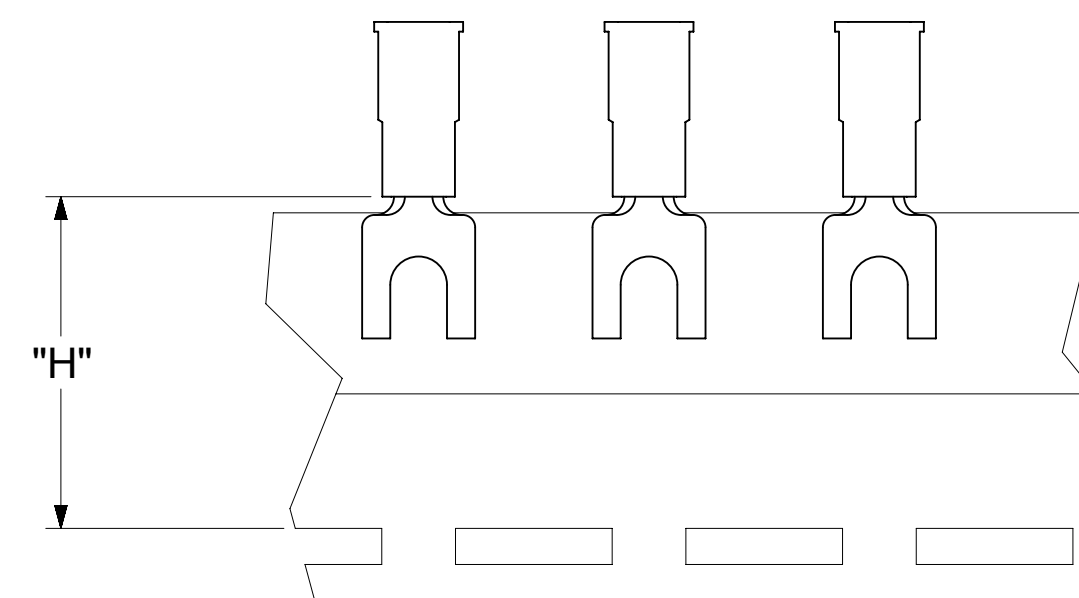
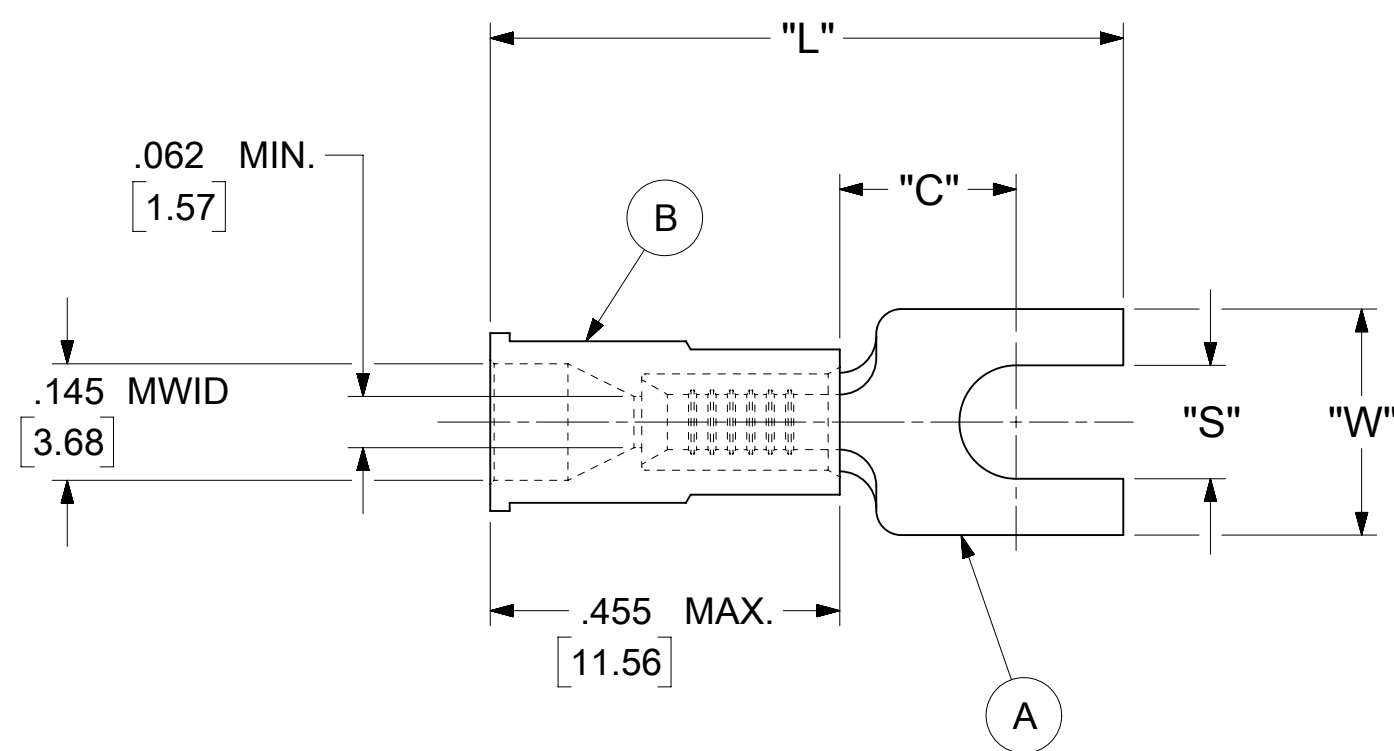


LOOSE PIECE		TAPE MOUNTED		SPECIFICATIONS						
MATERIAL NUMBER	ENGINEERING NUMBER	MATERIAL NUMBER	ENGINEERING NUMBER	STUD SIZE	"S" ±.005 [0.13]	"W" ±.010 [0.25]	"C" MIN.	"L" MAX.	"H"	STOCK THICKNESS
191300005	A-234-06X	---	---	6	.146 [3.71]	.291 [7.39]	.207 [5.26]	.835 [21.21]	---	.028 $\frac{+.001}{-.000}$ [0.71]
191300006	A-234-08X	---	---	8	.173 [4.39]					
191300007	A-234-10X	---	---	10	.198 [5.03]					
191300008	A-238-04X	---	---	4	.119 [3.02]	.245 [6.22]	.207 [5.26]	.835 [21.21]	.980 [24.89]	.028 $\frac{+.001}{-.000}$ [0.71]
191300009	A-238-06X	191420009	A-238-06XT	6	.146 [3.71]					



- NOTES:
- MATERIAL:
 - (A). SPADE TONGUE TERMINAL: COPPER
 - PLATING: ELECTRO-TIN (.0003 MIN.)
 - (B). INSULATION: MOLDED PVC (RED)
 - MWID: MAXIMUM WIRE INSULATION DIAMETER
0.25 -1.5 MM²
 - WIRE SIZE: 22 -18 AWG
0.25 -1.5 MM²
 - ALL DIMENSIONS IN INCHES/[MM].
 - PARTS ARE ROHS COMPLIANT.
 - DIMS. SHOWN ARE FOR REFERENCE ONLY.

SYMBOLS	THIS DRAWING CONTAINS INFORMATION THAT IS PROPRIETARY TO MOLEX ELECTRONIC TECHNOLOGIES, LLC AND SHOULD NOT BE USED WITHOUT WRITTEN PERMISSION											
	▽ = 0	INCH/MM	SCALE	CURRENT REV DESC: MIGRATION TO ECTR/NX								
▽ = 0	GENERAL TOLERANCES (UNLESS SPECIFIED)	NTS										
▽ = 0		MM	INCH	EC NO: 620952								
▽ = 0	4 PLACES ± --- ± ---			DRWN: ABENJAMINLW 2019/06/27								
▽ = 0	3 PLACES ± --- ± .005			CHK'D: GROJAS01 2019/07/19								
▽ = 0	2 PLACES ± 0.13 ± .01			APPR: JMACNEIL 2019/08/05								
▽ = 0	1 PLACE ± 0.25 ± ---			INITIAL REVISION:								
▽ = 0	0 PLACES ± --- ± ---			DRWN: JJ 1984/10/29								
▽ = 0	ANGULAR TOL ± 0.5°			APPR: JMACNEIL 2019/08/05								
▽ = 0	DRAFT WHERE APPLICABLE MUST REMAIN WITHIN DIMENSIONS	THIRD ANGLE PROJECTION		DRAWING		SERIES		DOCUMENT NUMBER		DOC TYPE	DOC PART	REVISION
▽ = 0		C-SIZE		19130		191300004		PSD		000		A
				SEE TABLE		GENERAL MARKET		MATERIAL NUMBER		CUSTOMER		SHEET NUMBER
												1 OF 1