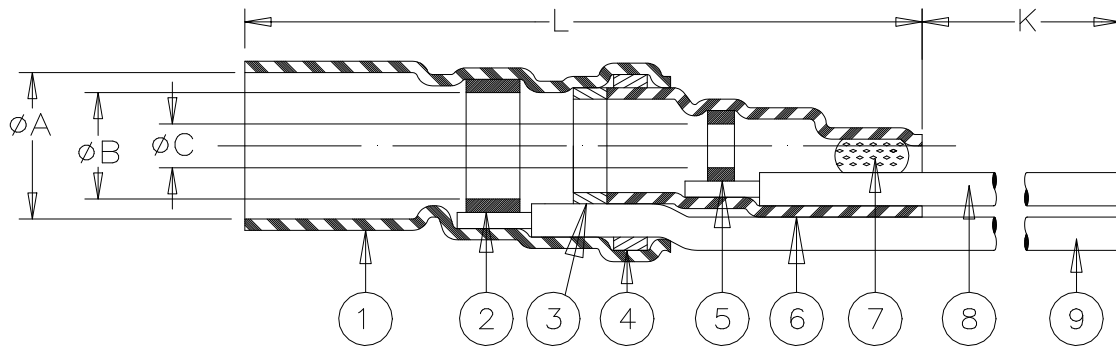


CUSTOMER DRAWING



C

PART NAME	PRODUCT DIMENSIONS					"GA" = WIRE GAUGE (AWG)
	A min	B min	C min	L max	K min	
B-021-26-N	6.3 (0.250)	4.6 (0.180)	2.8 (0.110)	32 (1.260)	150 (5.900)	26

CABLE DIMENSIONS				
D	E	F min	(G±0.02)	(M±0.02)
2.4 (0.095) TO 6.3 (0.250)	2.3 (0.090) TO 4.6 (0.180)	0.3 (0.012)	19 (0.750)	6 (0.235)

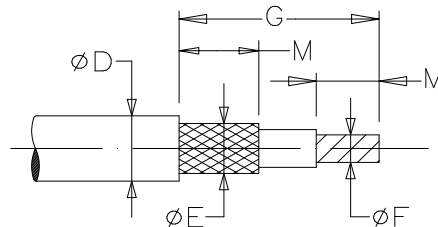
MATERIAL

1. & 6. INSULATION SLEEVE: Heat-shrinkable, radiation cross-linked modified polyvinylidene fluoride. Transparent blue.
2. & 5. SOLDER PREFORMS WITH FLUX:
 SOLDER: TYPE Sn63 per ANSI J-STD-006.
 FLUX: TYPE ROL0 per ANSI J-STD-004.
- 3., 4. & 7. MELTABLE RINGS: Thermally stabilized thermoplastic.
8. CONDUCTOR LEAD: AWG GA (see table). MIL-W-81822/13-GA-9. ETFE insulated silver plated solid conductor. Color: white.
9. GROUND LEAD: MIL-W-81822/13-GA-G. ETFE insulated, silver-plated, solid conductor. Color: blue. GA= Gauge per table.

APPLICATION

- A. The parts covered by this document are for use in terminating the primary conductor and the braided shield of a coaxial cable having tin or silver-plated conductor and shield, rated for at least 125° C and meeting the dimensional requirements listed.
- B. Parts will meet the requirements of Raychem specification RT-1404 when installed per Raychem RPIP-500-03.

For best results, prepare the cable as shown:



TE TE Connectivity		Raychem Devices		TITLE: COAXIAL SOLDERSLEEVE DEVICE WITH PRE-INSTALLED LEAD SOLID WIRES			
UNLESS OTHERWISE SPECIFIED DIMENSIONS ARE IN MILLIMETERS. INCHES DIMENSIONS ARE IN BETWEEN BRACKETS.				DOCUMENT NO: B-021-GA-N			
TOLERANCES: 0.00 N/A 0.0 N/A 0 N/A	ANGLES: N/A ROUGHNESS IN MICRON	TE Connectivity reserves the right to amend this drawing at any time. Users should evaluate the suitability of the product for their application.		DOCUMENT REVISION: D		REVISION ISSUE DATE: 12-MAR-2020	
DRAWN BY: R. MAPALO	DATE: 23-NOV-1998	CAGE CODE: 06090	ECO NUMBER: ECO-20-003669	SCALE: NONE	SIZE: A	SHEET: 1 of 1	