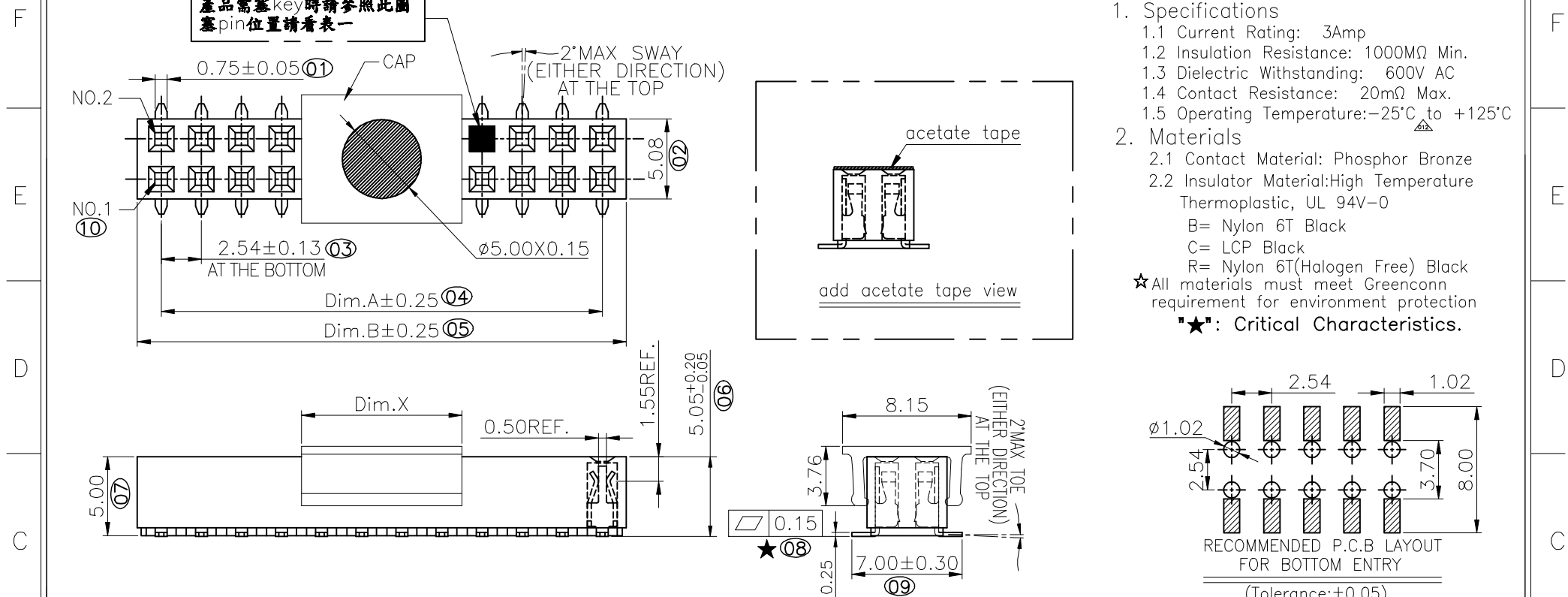


REV.	LOCAS.	DESCRIPTION	DATE	DRAWN
012	△△	依業務要求增加車載料號	2020.10.04	何東華
013	△△	依業務要求增加車載料號	2020.10.14	何東華



- Specifications
    - 1.1 Current Rating: 3Amp
    - 1.2 Insulation Resistance: 1000MΩ Min.
    - 1.3 Dielectric Withstanding: 600V AC
    - 1.4 Contact Resistance: 20mΩ Max.
    - 1.5 Operating Temperature: -25°C to +125°C
  - Materials
    - 2.1 Contact Material: Phosphor Bronze
    - 2.2 Insulator Material: High Temperature Thermoplastic, UL 94V-0
      - B= Nylon 6T Black
      - C= LCP Black
      - R= Nylon 6T(Halogen Free) Black
- ★ All materials must meet Greenconn requirement for environment protection  
 ★★: Critical Characteristics.

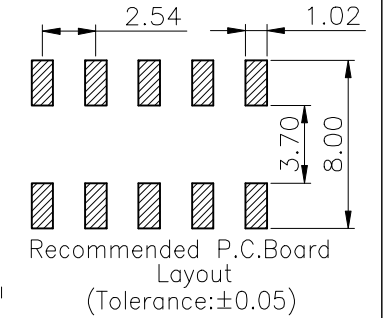
只適用於A004系列產品上

CAP	4.00mm	02~03pins
	10.15mm	04~40pins
Name	Dim.X	NOTE
CAP	4.00mm	02~08pins
	10.15mm	09~40pins

**Ordering Information**

C SHC206 - XX XX A XXX X 1 A X

No. of Pins per Row 02~40 △△△  
 Standard Plating 02=Gold Flash  
 Selective Plating 01=Tin 05=Gold Flash/Tin  
 serial NO. Material Look Form Color 1=Black  
 Standard Packing C=Tube Selective Packing A=Box E=Cap+Tube F=Cap+Tape&Reel G=Acetate Tape+Tube H=Acetate Tape+Tape&Reel



<b>格稜股份有限公司</b> <b>Greenconn Corporation</b>					GENERAL TOLERANCE		DESIGNED: 何東華	DATE: 2020.10.14	DWG. NO. △△	TITLE: 2.54 FEMALE HEADER DUAL ROWS SMT TYPE CONNECTOR
					X'±5.0'	X±0.30	CHECKED:	DATE:	CSHC206-CAXXXXXA	
REV. 013	UNIT. mm	SCALE. 3:1	PAGE. 1/2	.X'±3.0'	.X±0.25	CO SINGED: 廖世龍	DATE: 2020.10.14	PART NO. △△	CSHC206-XXXX AXXXXX1AX	
				.XX'±2.0'	.XX±0.15	APPROVED:	DATE:			
				.XXX'±1.0'	.XXX±0.10					

