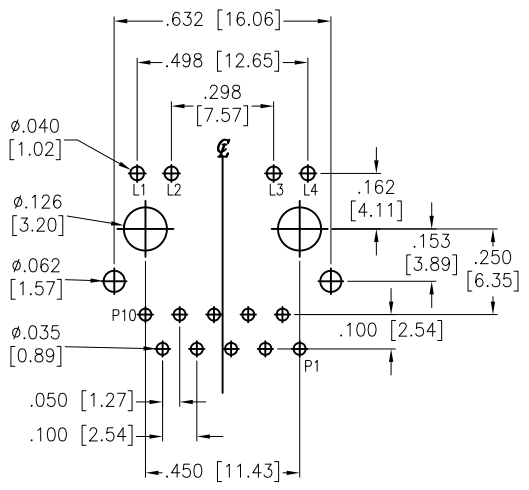
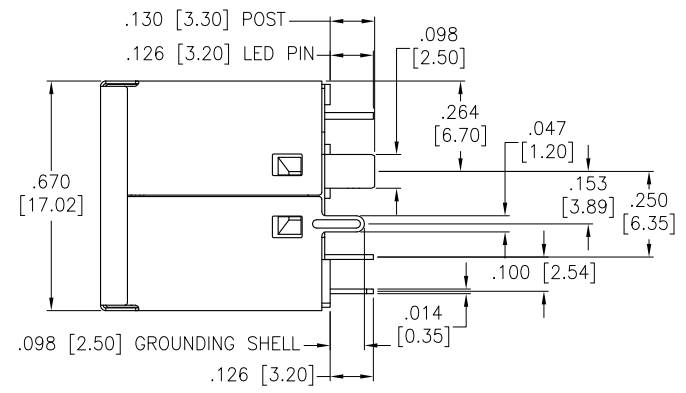
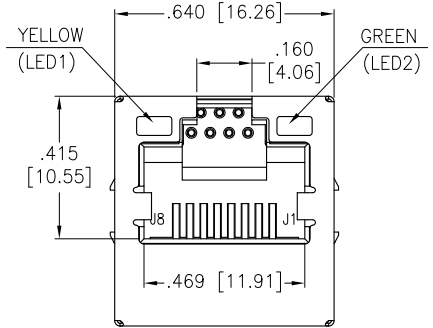
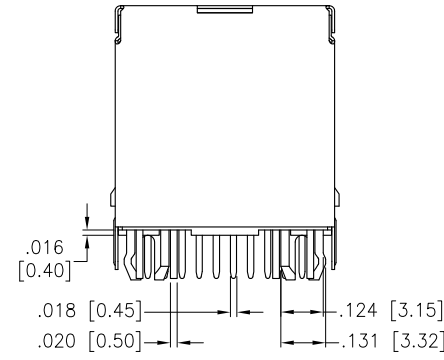
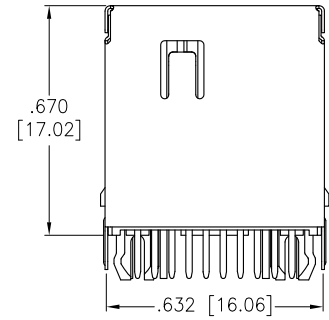


| Rev | AWO # | Description | Date | Appr |
|-----|-------|-------------|----------|------|
| - | | RELEASED | 12/12/16 | |

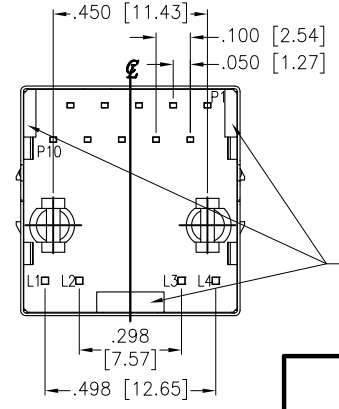
APPROVED: _____
DATE: _____ TITLE: _____



RECOMMENDED PCB LAYOUT



BACK VIEW



SPECIFICATIONS:
Material:
 Insulator: Thermoplastic, rated UL 94V-0
 Insulator color: Black
 Contacts: Phosphor Bronze
 Solder tail: Brass
 Shield: Stainless, Pre-Soldering
 Contact Plating:
 Plating:
 Round contact
 Gold over Nickel underplate overall
 Flat contact
 Gold over Nickel underplate on contact area,
 Tin over Nickel underplate on solder tails
Electrical:
 Insulation resistance: 500 Mohms min
 Dielectric withstanding voltage: 1,500 VAC or 2,250 VDC for 1 minute
 Temperature Rating:
 Operating temperature: -0°C to +70°C
Environmental:
 Lead free, RoHS compliant.



UNLESS OTHERWISE SPECIFIED
ALL DIMENSIONS ARE INCHES [MM]
TOLERANCES: EXCEPT AS NOTED

| | |
|-------------|--------------|
| .X ± .10 | Ø.X ± .10 |
| .XX ± .020 | Ø.XX ± .015 |
| .XXX ± .015 | Ø.XXX ± .010 |

| APPROVALS | | DATE |
|-----------|----|----------|
| DRAWN | HR | 12/12/16 |
| CHECKED | AT | 12/12/16 |
| APPROVED | | |

ADAM TECH INTERCONNECTS 909 Rahway Avenue, Union, NJ 07083
Phone: 908-687-5000 Fax: 908-687-5710

TITLE: **MODULAR TELEPHONE JACK, 8P8C TOP ENTRY, PCB, FULL SHIELD**

| | | |
|------|-----------------------|------|
| SIZE | PART NO. | REV. |
| X | MTJ-88AX1-FSN-LG-M21Y | - |

REF: S00101C SCALE: NTS SHEET 1 OF 2

6 5 4 3 2 1

D

D

C

C

B

B

A

A

6 5 4 3 2 1

6 5 4 3 2 1

APPROVED: _____
DATE: _____ TITLE: _____

| Rev | AWO # | Description | Date | Appr |
|-----------------------------|-------|-------------|------|------|
| SEE SHT 1 OF 2 FOR REVISION | | | | |

- INSERTION LOSS :
- 1~100 MHz -1.0dB MAX
- RETURN LOSS(LOAD 100Ω) :
- 1~30 MHz -18dB MIN
- 30~60 MHz -16dB MIN
- 60~80 MHz -12dB MIN
- 80~120 MHz -10dB MIN
- COMMON MODE REJECTION
- 1~100 MHz -30dB MIN
- CROSS TALK
- 1~100 MHz -30dB MIN
- INDUCTANCE @ 100KHz, 0.1V, 8mA DC BIAS
- (P1-P2),(P3-P4),(P7-P8),(P9-P10) : 350 uH MIN
- DCR
- (J1-J2),(J3-J6),(J4-J5),(J7-J8): 1.2 Ohm MAX
- HI-POT TEST
- BOARD SIDE TO CABLE SIDE :
1500VAC 60S OR 2250VDC 60S
- TURNS RATION 100KHz
- (P1-P2) : (J1-J2) = 1:1 ±%3
- (P3-P4) : (J3-J6) = 1:1 ±%3
- (P7-P8) : (J4-J5) = 1:1 ±%3
- (P9-P10) : (J7-J8) = 1:1 ±%3

Yellow
L1 → → L2
LED1

Green
L3 → → L4
LED2

UNLESS OTHERWISE SPECIFIED
ALL DIMENSIONS ARE INCHES [MM]
TOLERANCES: EXCEPT AS NOTED

| INCHES | | HOLES | |
|--------|--------|-------|--------|
| .X | ± .10 | ∅.X | ± .10 |
| .XX | ± .020 | ∅.XX | ± .015 |
| .XXX | ± .015 | ∅.XXX | ± .010 |

| APPROVALS | | DATE |
|-----------|----|----------|
| DRAWN | HR | 12/12/16 |
| CHECKED | AT | 12/12/16 |
| APPROVED | | |

ADAM TECH
INTERCONNECTS

909 Rahway Avenue,
Union, NJ 07083
Phone: 908-687-5000
Fax: 908-687-5710

| | | |
|--|-----------------------------------|--------------|
| TITLE MODULAR TELEPHONE JACK, 8P8C TOP ENTRY, PCB, FULL SHIELD | | |
| SIZE X | PART NO. MTJ-88AX1-FSN-LG-M21Y | REV. - |
| REF: S00101C | SCALE: NTS | SHEET 2 OF 2 |

6 5 4 3 2 1