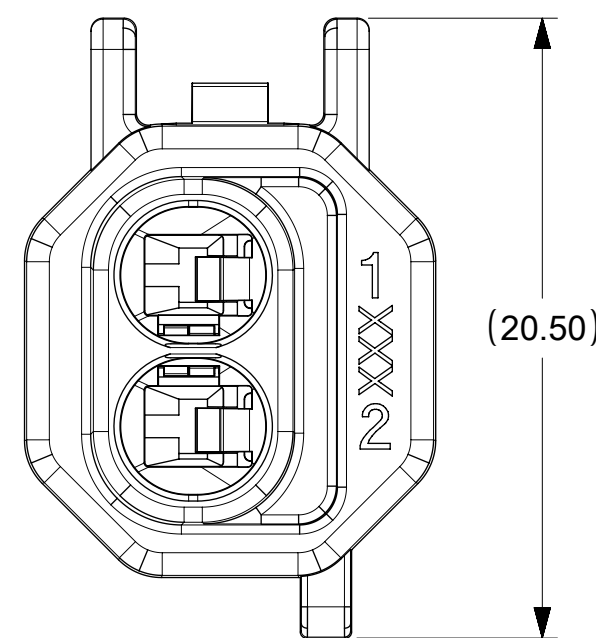
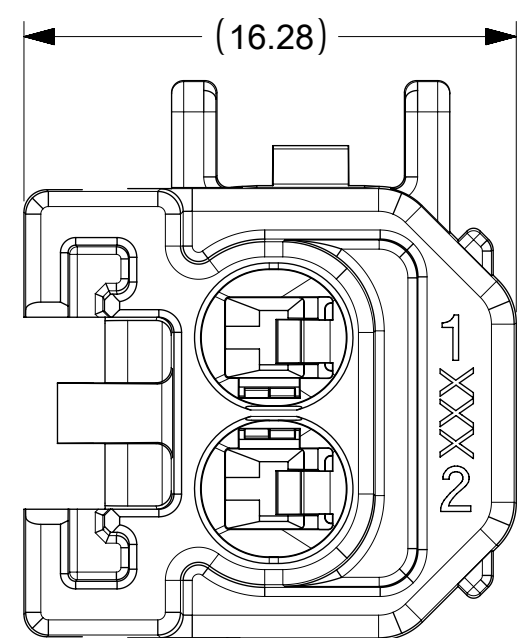


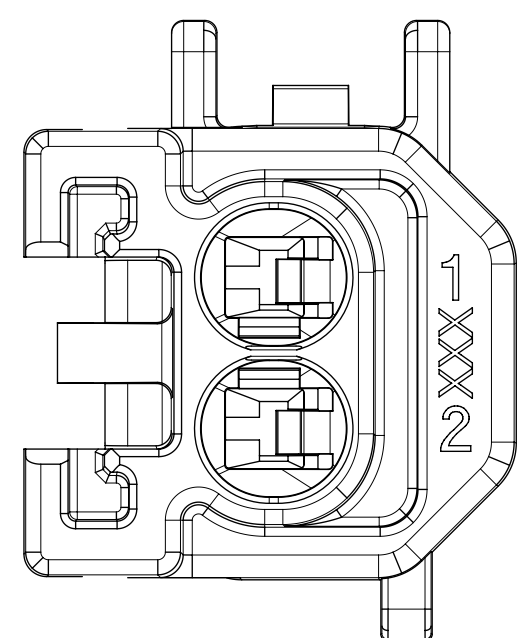
KEY OPTION C



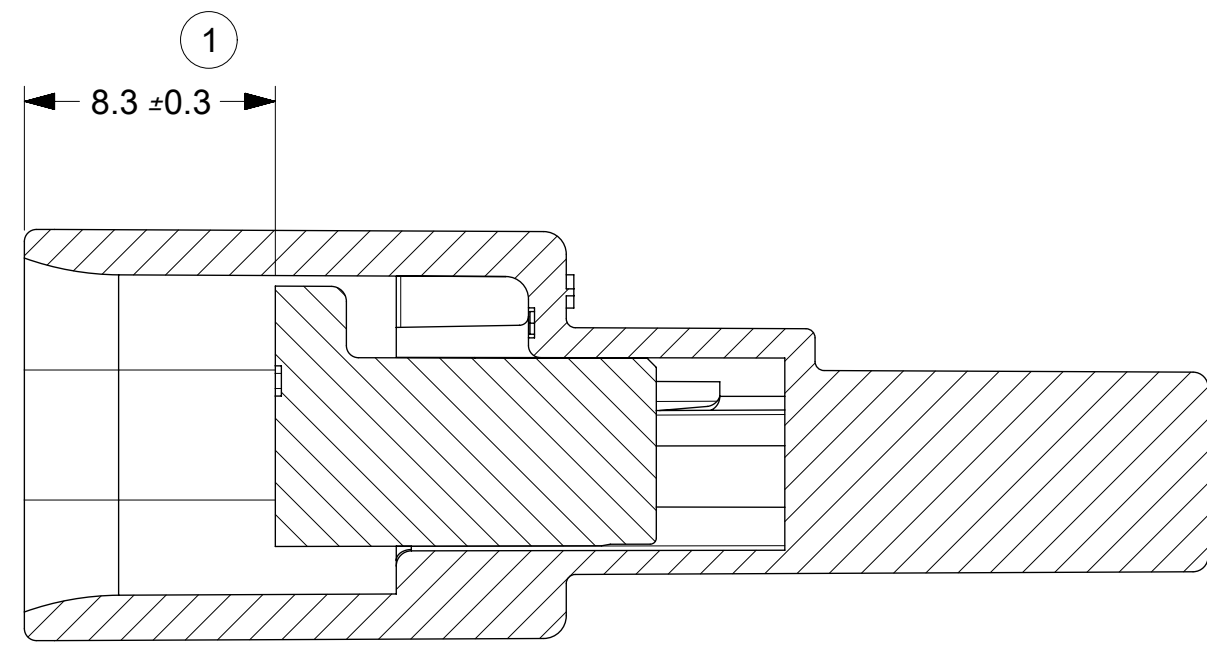
KEY OPTION B



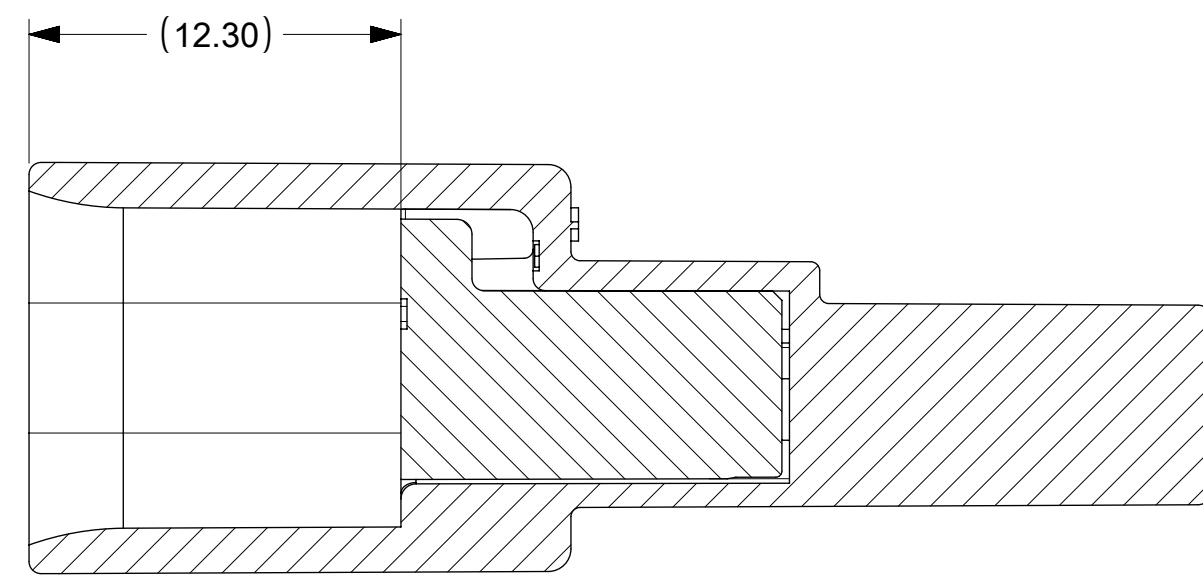
KEY OPTION C W/CLIP SLOT



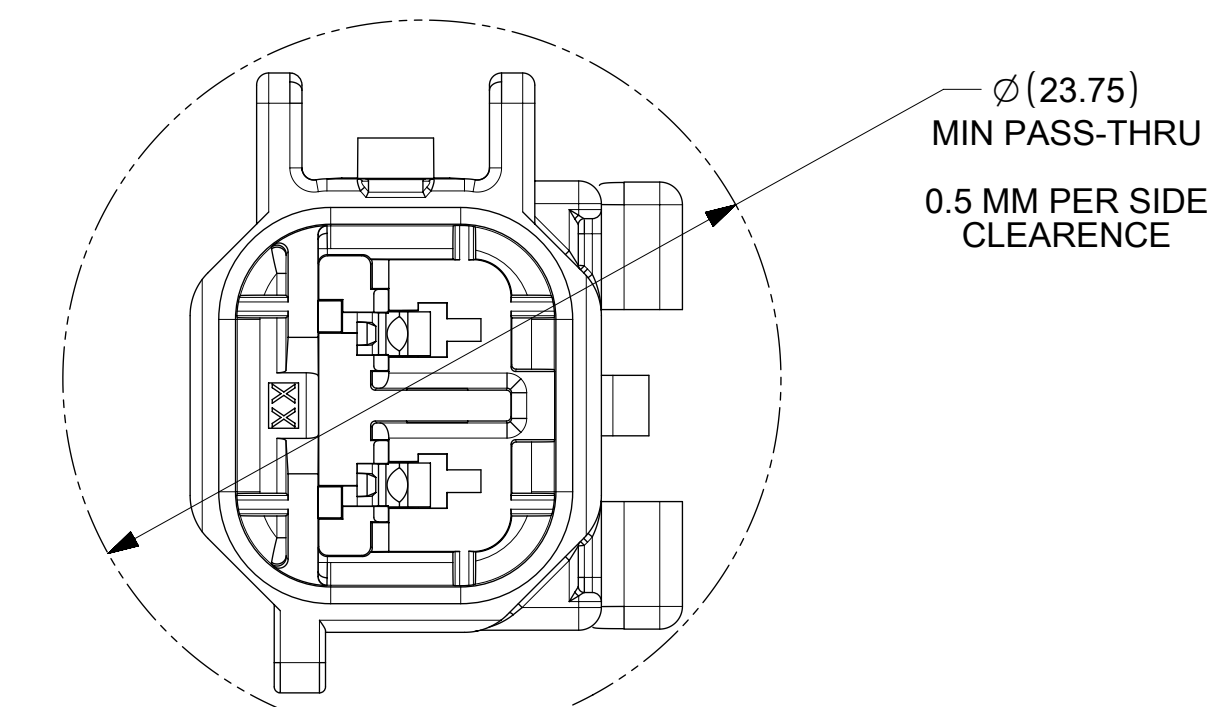
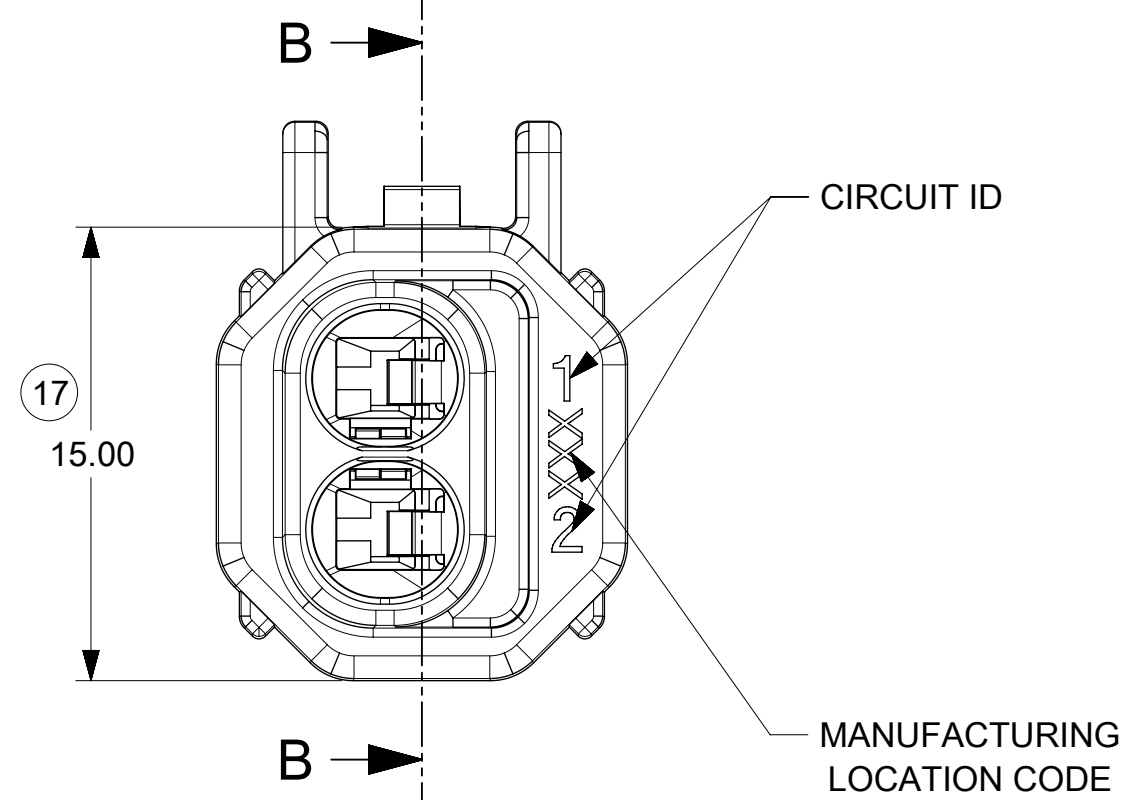
KEY OPTION B W/CLIP SLOT



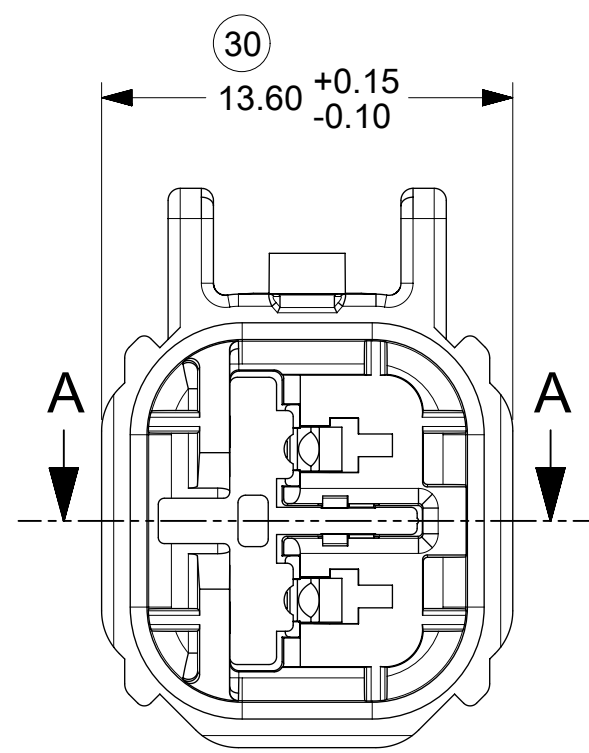
TPA SHOWN IN PRE-LOCK POSITION SECTION A-A



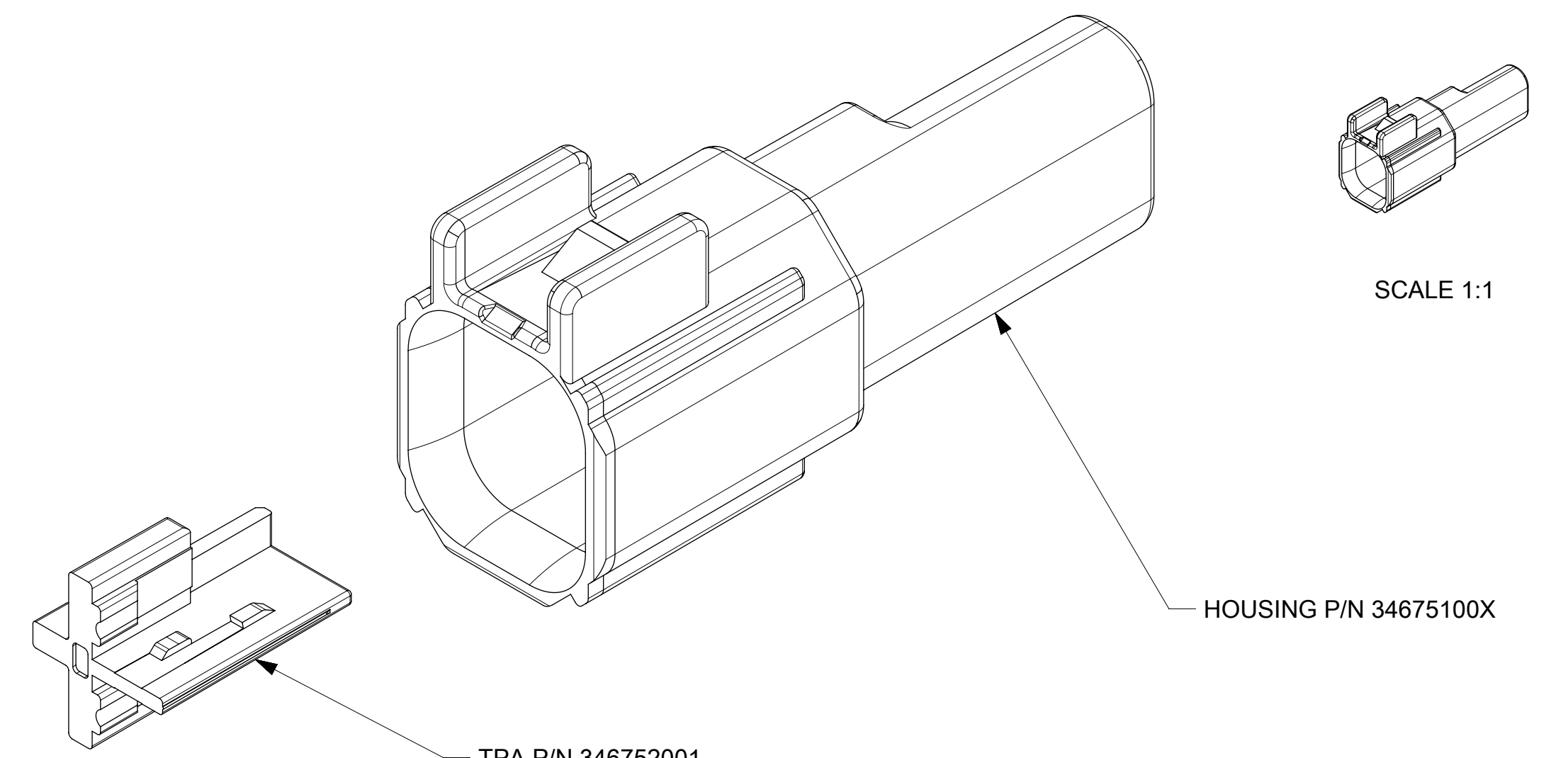
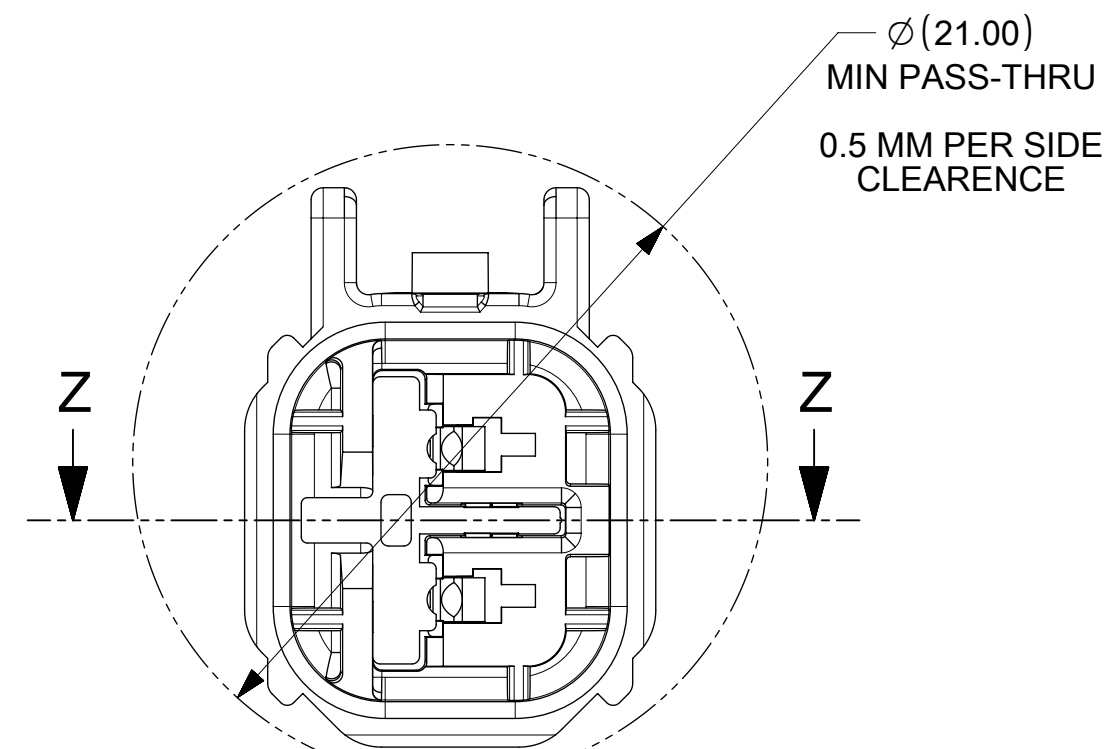
TPA SHOWN IN FINAL LOCK POSITION SECTION Z-Z



KEY OPTION B W/CLIP SLOT



KEY OPTION C



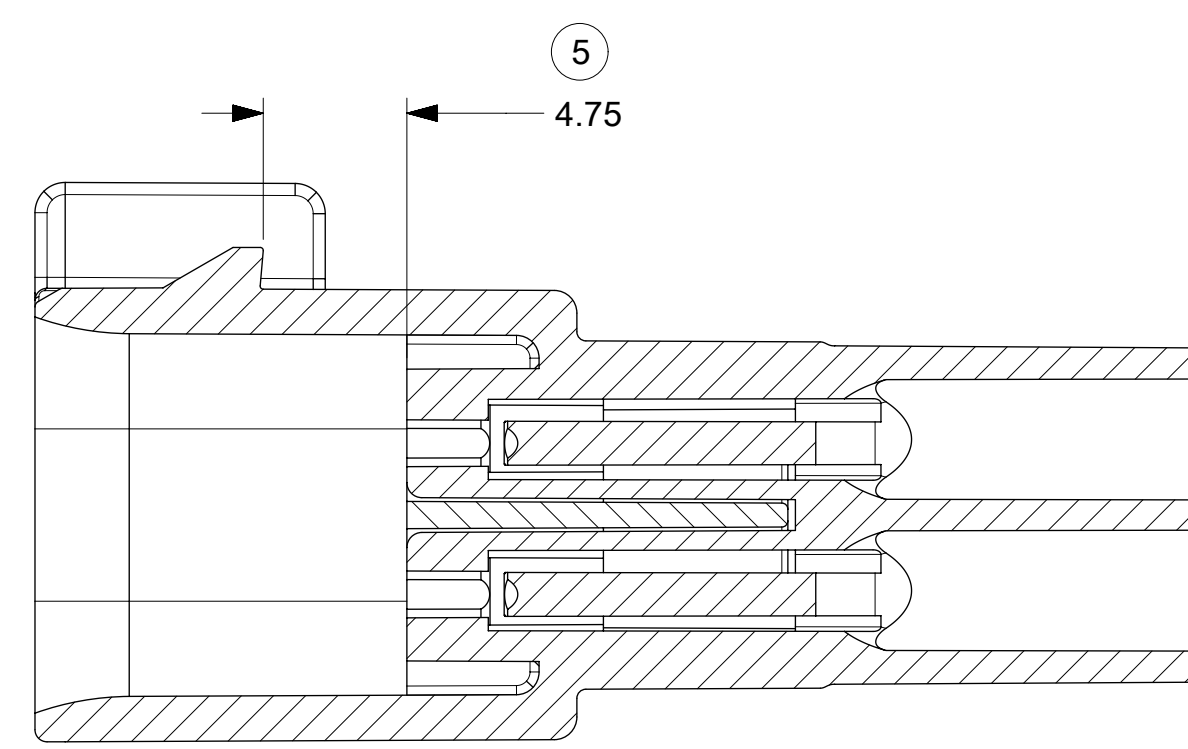
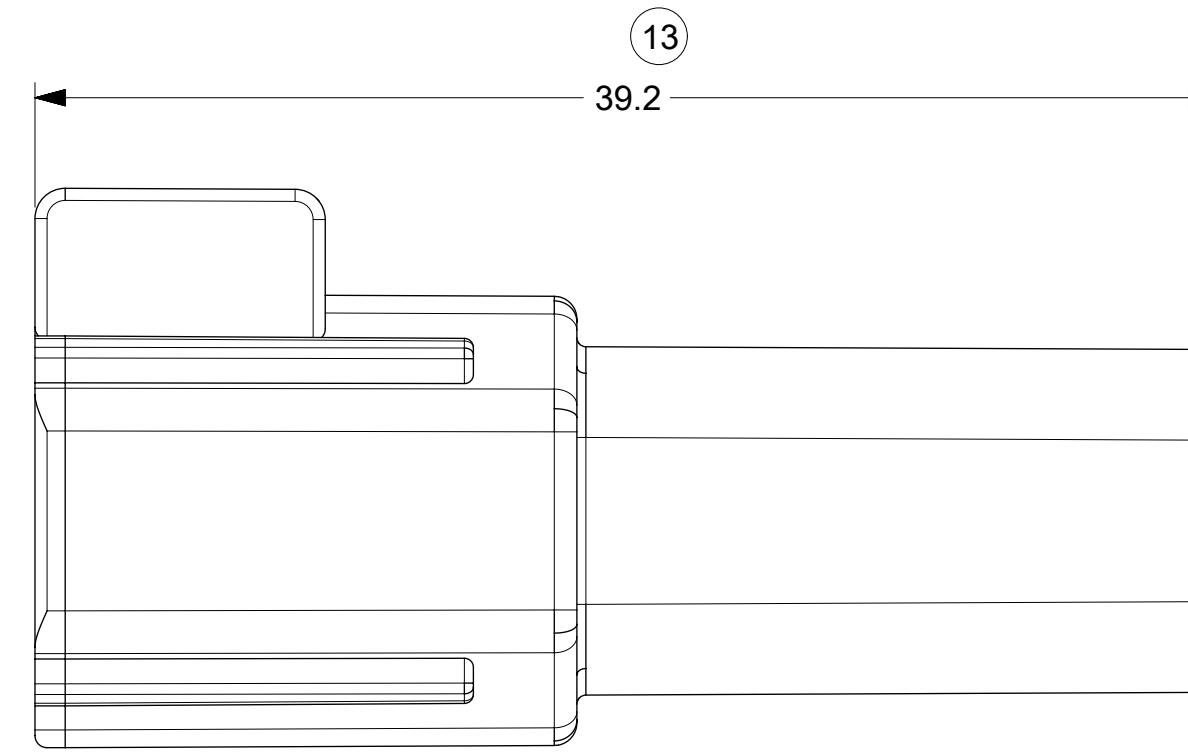
SCALE 1:1

HOUSING P/N 34675100X

TPA P/N 346752001

NOTES: VALID UNLESS OTHERWISE SPECIFIED

1. GENERAL:
 - a. APPLICATION SPECIFICATION SEE: AS-34062-000
 -CONTAINS: PRODUCT INTRODUCTION, PRODUCT SUMMARY, CONNECTOR ASSEMBLY, PACKAGING INFORMATION, CONNECTOR MATING, SERVICE INSTRUCTIONS, ELECTRICAL CONTINUITY CHECKING, CRIMPING, AND TROUBLESHOOTING.
 -DESIGNED TO MATE WITH RECEPTACLE SEALED ASSEMBLY AS SPECIFIED IN MOLEX CHARTED DRAWING SD-34062-002.
 -ASSEMBLY SHIPPED WITH PLR IN PRE-LOCK POSITION (SEE PLR PRE-LOCK VIEW).
 - b. PRODUCT SPECIFICATION SEE: PS-34062-000
 CONTAINS: SCOPE, PRODUCT DESCRIPTION, INTEGRAL COMPONENTS AND ACCESSORIES, APPLICABLE DOCUMENTS AND SPECIFICATIONS, RATINGS, PERFORMANCE, PACKAGING, GAUGE AND FIXTURES, AND OTHER INFORMATION.
 - c. PACKAGING SPECIFICATION PER MOLEX DRAWING: PK-31300-635
 - d. PARTS MUST BE IN COMPLIANCE TO MOLEX CHEMICAL SUBSTANCES FOR PRODUCTS AND PACKAGING SPECIFICATION: QEHS-699000-300
 - e. DATA MUST BE SUBMITTED UNDER THE MOLEX PART NUMBER TO IMDS (COMPANY ID#13255)
2. DESIGN - MATERIALS:
 - a. HOUSING & TPA NYLON 6 30% GLASS FILLED
3. DESIGN - GEOMETRY:
 - a. THE 3-D CAD DATA IS BASIC (WITHOUT TOLERANCE) AND MASTER FOR THIS PART WITH THE EXCEPTION OF UNDERLINED DIMENSIONS. DIMENSIONAL INFORMATION NOT SHOWN ON THIS DRAWING IS DEFINED BY THE DATA FILE AT ITS LATEST REVISION.
 - b. GEOMETRIC DIMENSIONS AND TOLERANCES PER ASME Y14.5M-1994
 - c. EDGES AND UNDIMENSIONED DETAILS PER ISO13715
 - d. CORNERS SHOWN AS SHARP TO BE R 0.2 MAX.
 - e. LETTERING SHALL BE 0.15 MAX RAISED IN 0.25 MAX RECESS PAD. THIS INCLUDES RECYCLING CODE, CAVITY ID, VENDOR IDENTIFICATION, AND CUSTOMER MATERIAL NUMBER.
 - f. VISUAL DEFECTS SHALL MEET COSMETIC STANDARD PS-45499-002 (Class B).
 - g. LASER MARKING: TBD



SECTION B-B

BILL OF MATERIALS (BOM)			
ASSEMBLY NUMBER	KEY OPTION	COLOR	CLIPSLOT
34675-0001	C	BLACK	NO
34675-0002	B	GRAY	NO
34675-0003	C	BLACK	YES
34675-0004	B	GRAY	YES

INSPECTION BALLOON NUMBER LOG			
PER DRAWING REVISION:D3		D3	
LAST BALLOON NUMBER USED:		NX-REMASTERING	
ADDED BALLOON NUMBERS:		REV.	
REMOVED BALLOON NUMBERS:		DESCRIPTION	
THIS DRAWING CONTAINS INFORMATION THAT IS PROPRIETARY TO MOLEX ELECTRONIC TECHNOLOGIES, LLC AND SHOULD NOT BE USED WITHOUT WRITTEN PERMISSION			
QUALITY SYMBOLS	GENERAL TOLERANCES (UNLESS SPECIFIED)	DIMENSION UNITS	SCALE
▽ = 0	ANGULAR TOL ± 3.0 °	MM	4:1
▽ = 0	4 PLACES ±	DRWN BY	DATE
▽ = 0	3 PLACES ±	M.VANSLAMBRO	2007-05-03
▽ = 0	2 PLACES ± 0.1	CHKD BY	DATE
▽ = 0	1 PLACE ± 0.2	S.VERZYL	
▽ = 0	0 PLACES ±	APPR BY	DATE
▽ = 0	DRAFT WHERE APPLICABLE MUST REMAIN WITHIN DIMENSIONS	S.MARCEAU	2017/06/14
		DRAWING SIZE	THIRD ANGLE PROJECTION
		D	
EC NO: 117955		SERIES	MATERIAL NUMBER
DRWN: PKABBUR		34675	SEE BOM
CHKD:		CUSTOMER	GENERAL MARKET
REV APPR: KDEKOSKI		DOCUMENT NUMBER	DOC TYPE
		SD-34675-001	PSD
		DOC PART	SHEET NUMBER
		000	1 OF 1