

THIS DRAWING IS UNPUBLISHED. RELEASED FOR PUBLICATION. BY TYCO ELECTRONICS CORPORATION. ALL RIGHTS RESERVED.

Table with columns: PART NUMBER, REVISION, DESCRIPTION, FEED TYPE, CONVERT TO, PART NUMBERS REQUIRED. Includes a diagram of the applicator.

Table: APPLICATOR DATA. Columns: CRIMP, SIZE, TYPE. Includes APPLICATOR INSTRUCTIONS 408-10389.

Table: TERMINAL DATA: LEAR TERMINAL LEAR CRIMP SPECIFICATION. Includes WIRE STRIP LENGTH, INSULATION DIAMETER RANGE, and TERMINALS APPLIED.

Table: CRIMP HEIGHT mm [INCH] and CRIMP HEIGHT REFERENCE SETTING. Lists various wire sizes and their corresponding crimp heights.

- RECOMMENDED SPARE PARTS
GREASE BEARING SURFACES LIGHTLY
LUBRICATE DAILY PER THE APPLICATOR INSTRUCTION SHEET SUPPLIED WITH THE APPLICATOR.
APPLICATOR SPECIFIC DATA TO BE ENTERED INTO BLANK MEMORY CHIP AT ASSEMBLY.
ADJUSTMENT OF THE STRIPPER MAY BE REQUIRED WHEN MOVING THE APPLICATOR BETWEEN BENCH AND LEADMAKER APPLICATIONS.
APPLY PART NUMBER 1-23419-5 LOCTITE TO THREADS OF ITEM 62 & 180.
GREASE THREADS, GROOVE AND O-RING ON ITEMS 35 & 252.
MAGNET, ITEM 166 MUST BE ORIENTED CORRECTLY IN ORDER TO PROPERLY ACTUATE THE COUNTER.
CRIMP HEIGHT REFERENCE SETTING WAS THE SETTING USED WHEN THE APPLICATOR WAS QUALIFIED AT THE FACTORY.
SPARE FEED CAM STORAGE LOCATION REFER TO INSTRUCTION SHEET FOR ADDITIONAL INFORMATION.
TO CONVERT THE APPLICATOR TO A NON-CARRIER CUTTING STYLE, REMOVE ITEM 13 AND ATTACH TO THE LOCATION ON THE BACK SIDE OF THE HOUSING.
WHEN ASSEMBLING A NON CRIMP HEIGHT ADJUST APPLICATOR (-6) USE SHIMS FROM ITEM 260 TO ACHIEVE A NOMINAL SHIM HEIGHT OF 3.08.

*WARNING
ON INSTALLATION, SET WIRE DISC, ITEM 40 TO LARGEST WIRE SIZE SETTING. USE OF SETTINGS BELOW MINIMUM REQUIRED CRIMP HEIGHT SETTING WILL CAUSE DAMAGE TO CRIMP TOOLING.

Table with columns: ITEM NO, DESCRIPTION, ITEM NO. Lists spare parts like APPLICATOR SHIM PACK, O-RING, PUSH ROD, BUSHING.

ATLANTIC VERSION
Shown on sheets 1 of 4 & 2 of 4
(Pacific version shown on sheets 3 of 4 & 4 of 4)

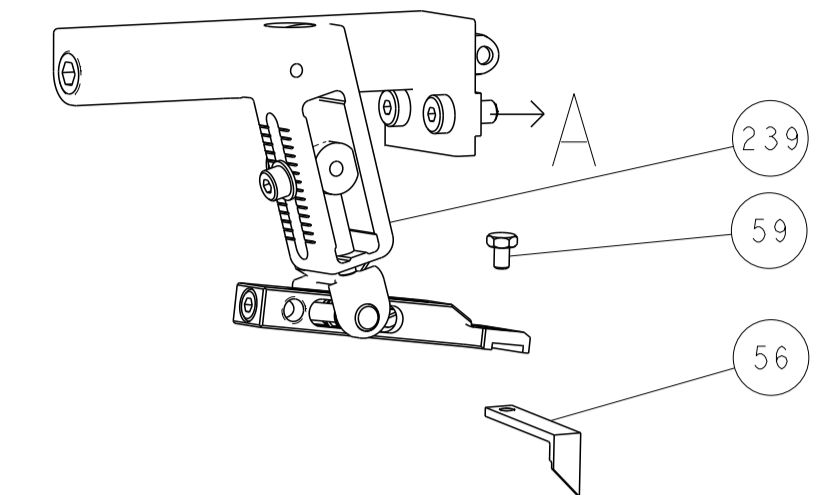
Table: REVISIONS. Columns: P, LTR, DESCRIPTION, DATE, DWN, APVD. Includes SET UP GAUGE 2119599-1.

Main parts list table with columns: P, LTR, DESCRIPTION, DATE, DWN, APVD. Lists various components like FEED CAM, DETENT PIN, SPRING, RAM, CAM, WASHER, RETAINER, SCR, SHCS, MECHANICAL FEED ASSEMBLY, TAG, SPACER, PIN, GUIDE PIN, RING, MAGNET, COUNTER, HOLDER, MEMORY CHIP, SERVO FEED LATCH ASM, FEED FINGER ASSEMBLY, SPACER, CRIMPER, DOCUMENTATION PACKAGE, TAG, SCREW, LIMITER, SCR, FEED PAWL, SHCS, NUT, HOLDDOWN, SCR, FEED CAM, FEED CAM, POST FEED, APPLICATOR BASIC ASSEMBLY, RAM, SCR, DISC, APPLICATOR SHIM PACK, RAM WASHER, FA HEAD, BOLT, SUPPORT, SCR, HEX HEAD, SPACER, STRIP GUIDE, ASSEMBLY, SPACER, STRIP GUIDE, STRIP GUIDE, SCR, WASHER, STRIPPER, INSERT, SPRING, STOP, SHEAR, SHEAR HOLDER, FLOATING SHEAR, ANVIL, DEPRESSOR, BLOCK, CRIMPER SPACER, CRIMPER, SPACER, CRIMPER.

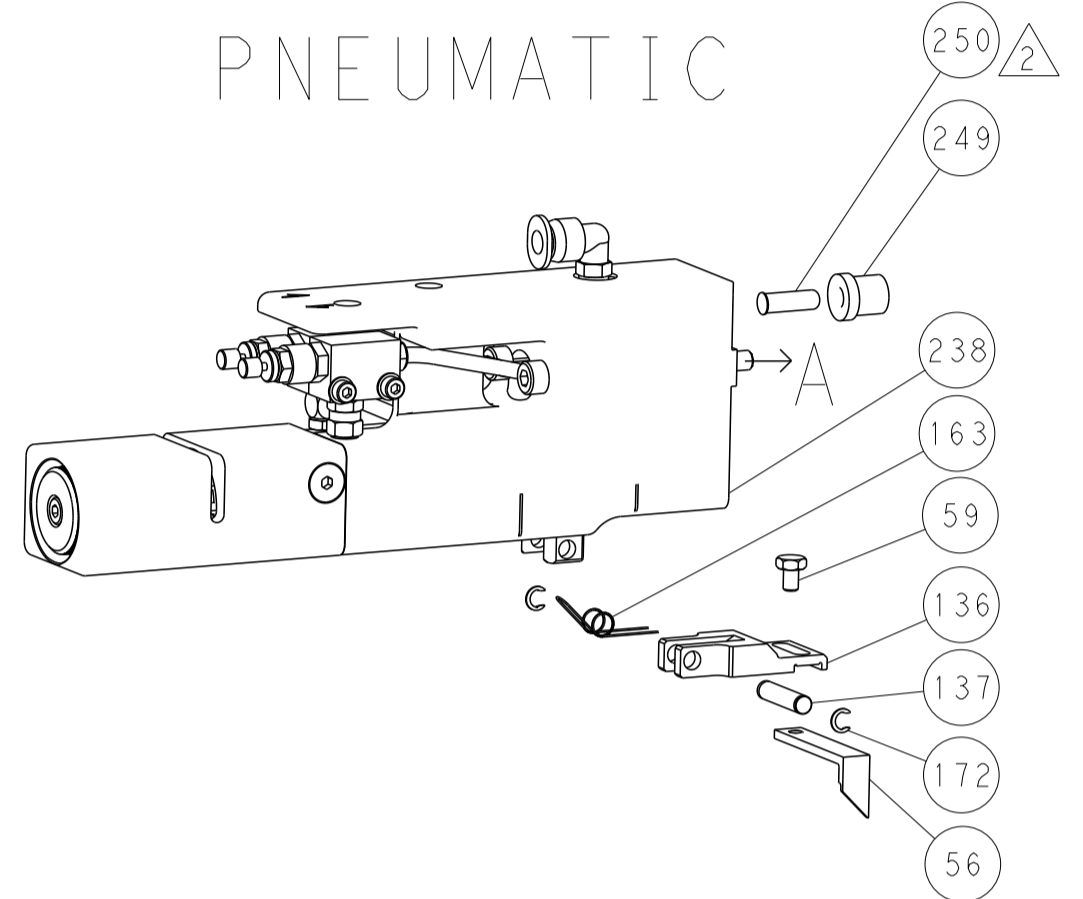
Technical drawing details including DIMENSIONS, TOLERANCES UNLESS OTHERWISE SPECIFIED, MATERIAL, FINISH, WEIGHT, SCALE, SHEET 1 OF 4, and CUSTOMER ACCESSIBLE PRODUCTION DRAWING.

LOC	DIST	REVISIONS					
A	66	P	LTN	DESCRIPTION	DATE	DWN	APVD
		-		SEE SHEET 1			

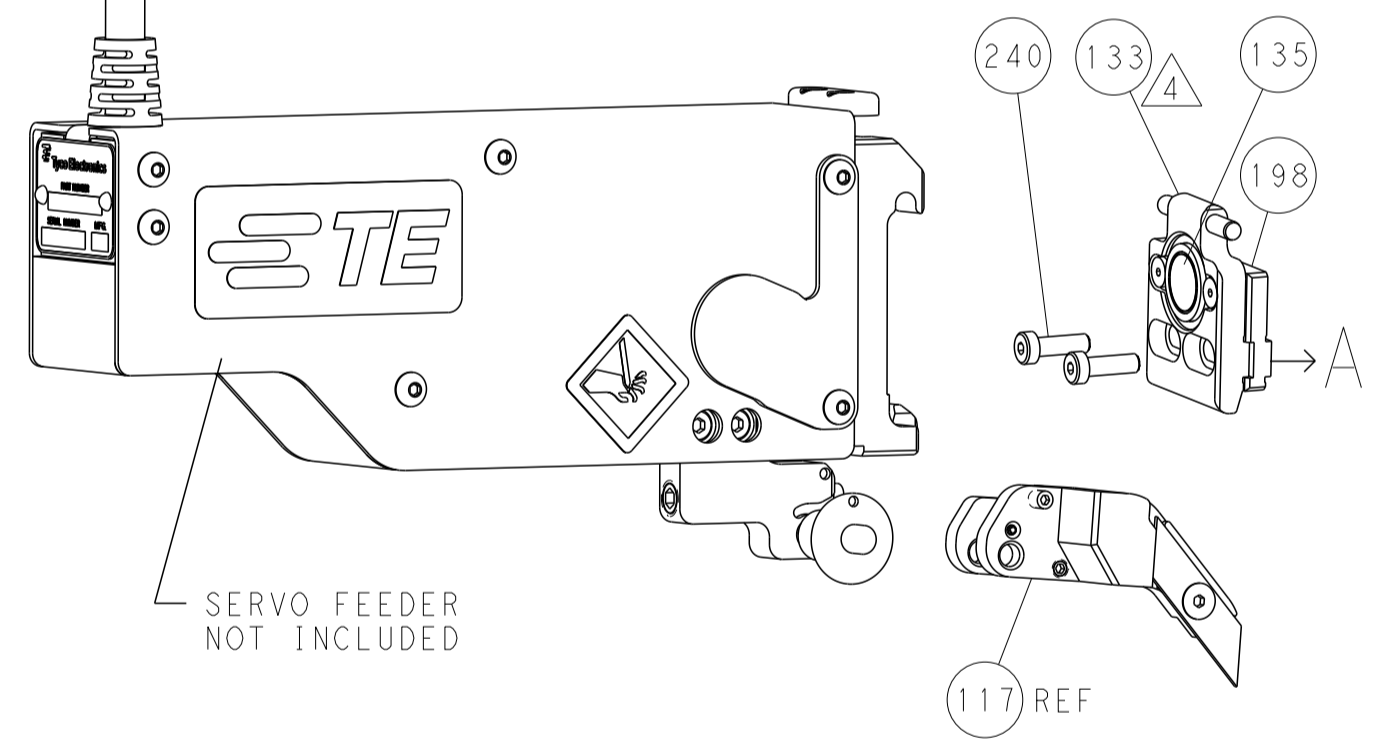
FEED TYPE MECHANICAL



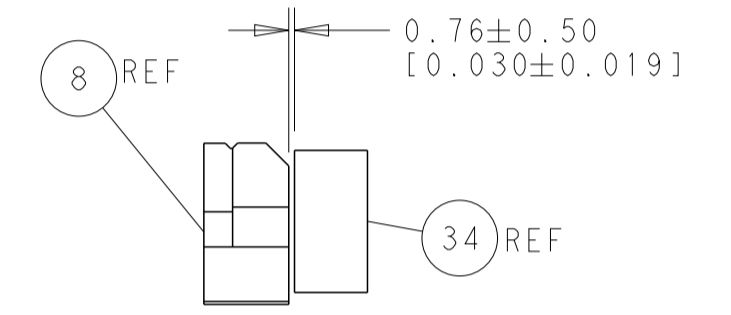
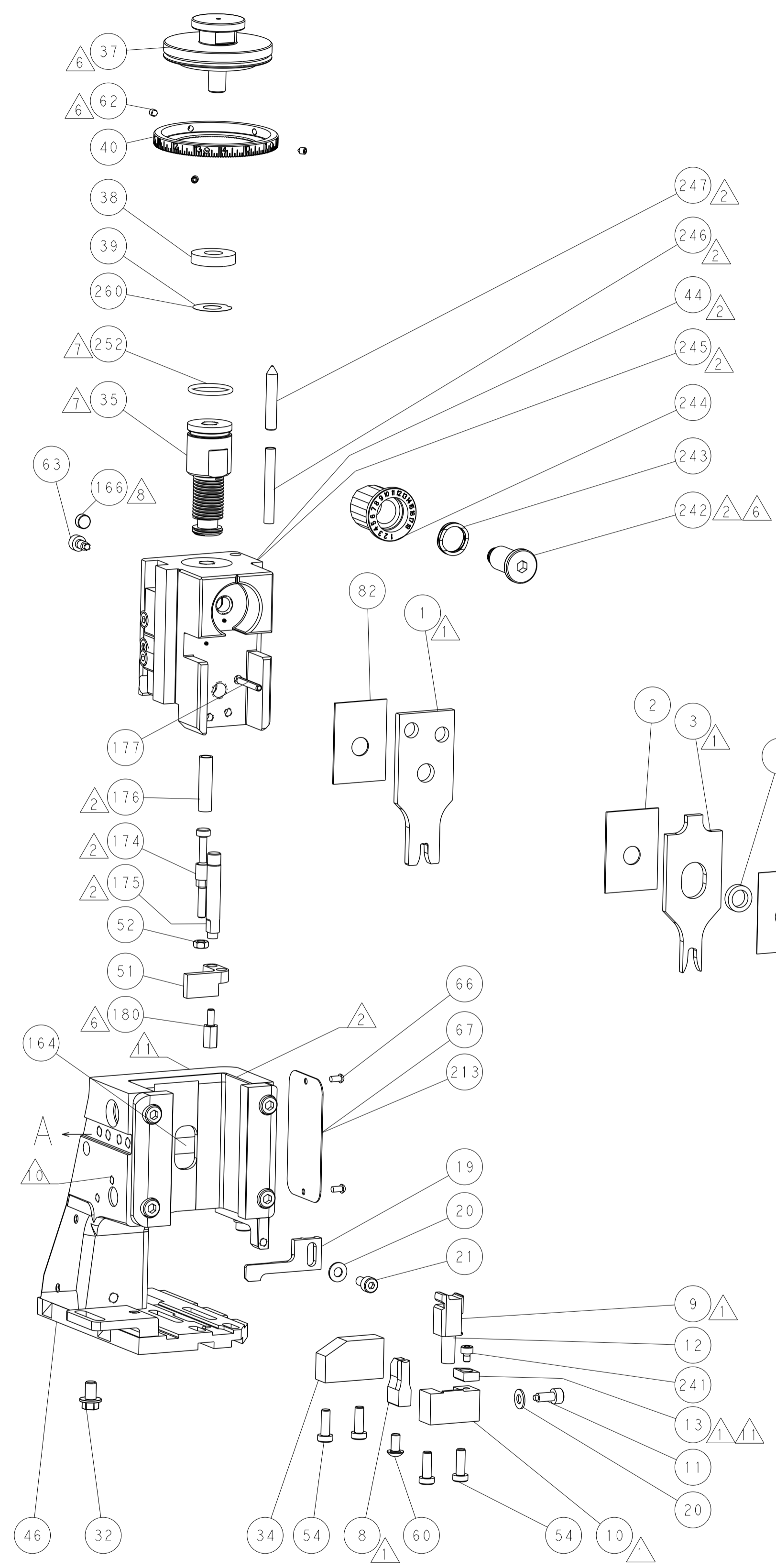
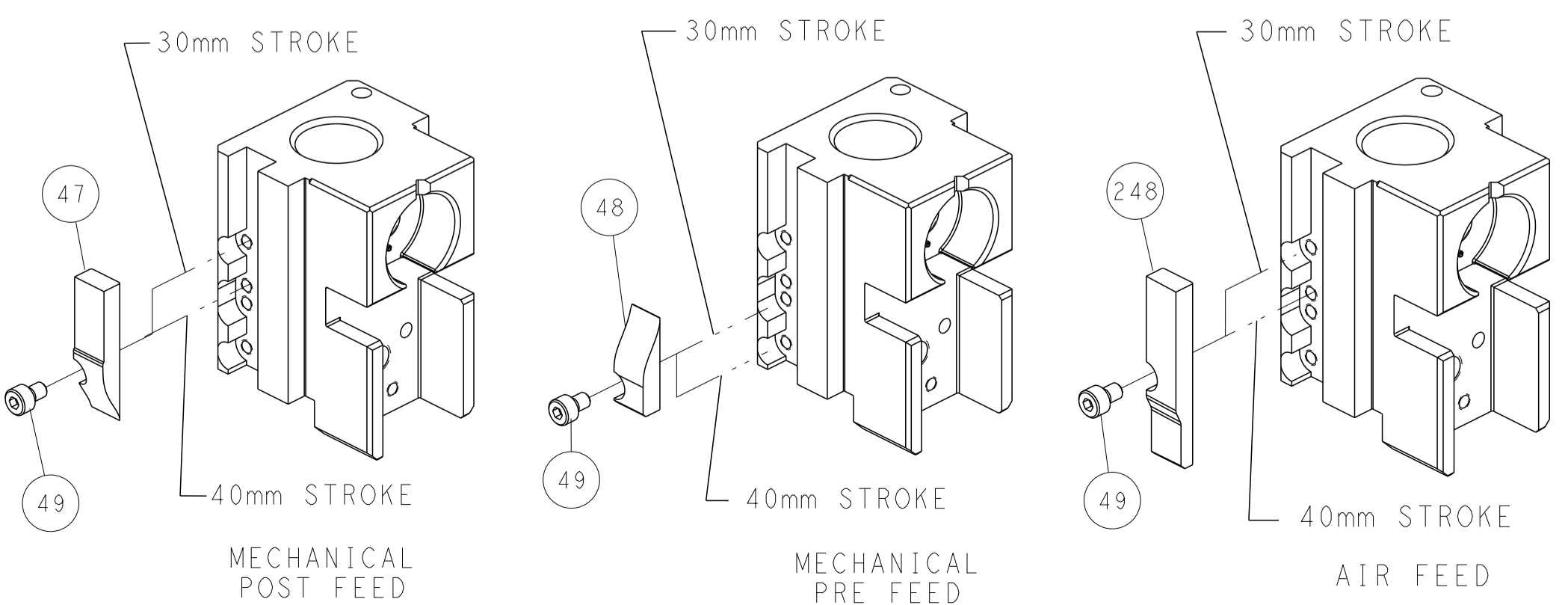
PNEUMATIC



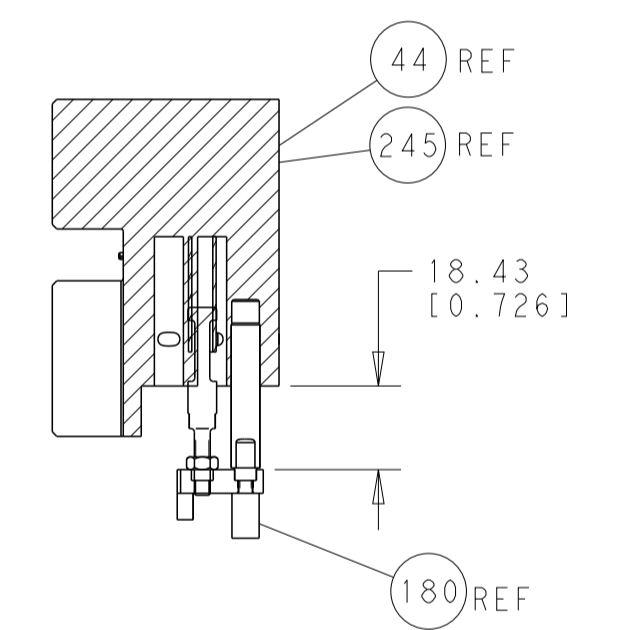
SERVO LATCH PLATE



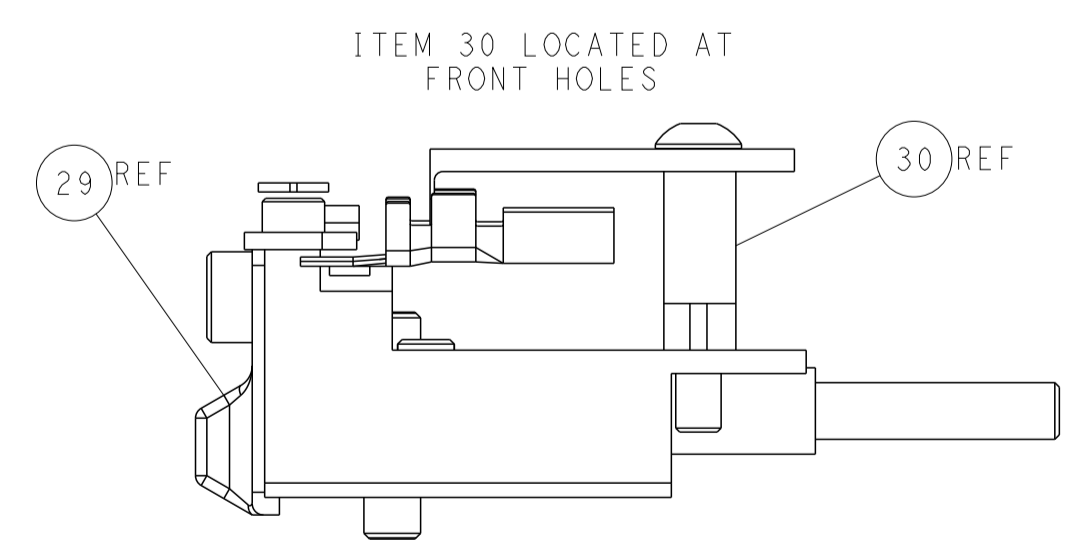
CAM POSITIONS



TERMINAL SUPPORT LOCATION



HOLDDOWN SET-UP



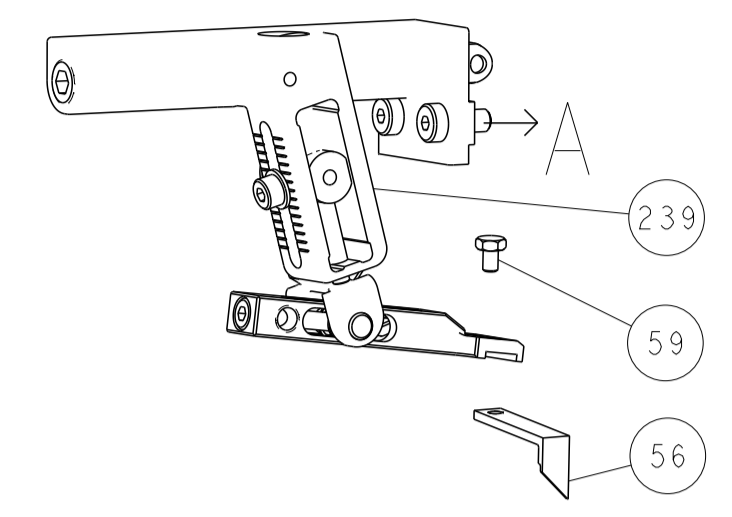
FEED TRACK POSITION GUIDE BY INSULATION BARREL

ATLANTIC VERSION
 Shown on sheets 1 of 4 & 2 of 4
 (Pacific version shown on sheets 3 of 4 & 4 of 4)

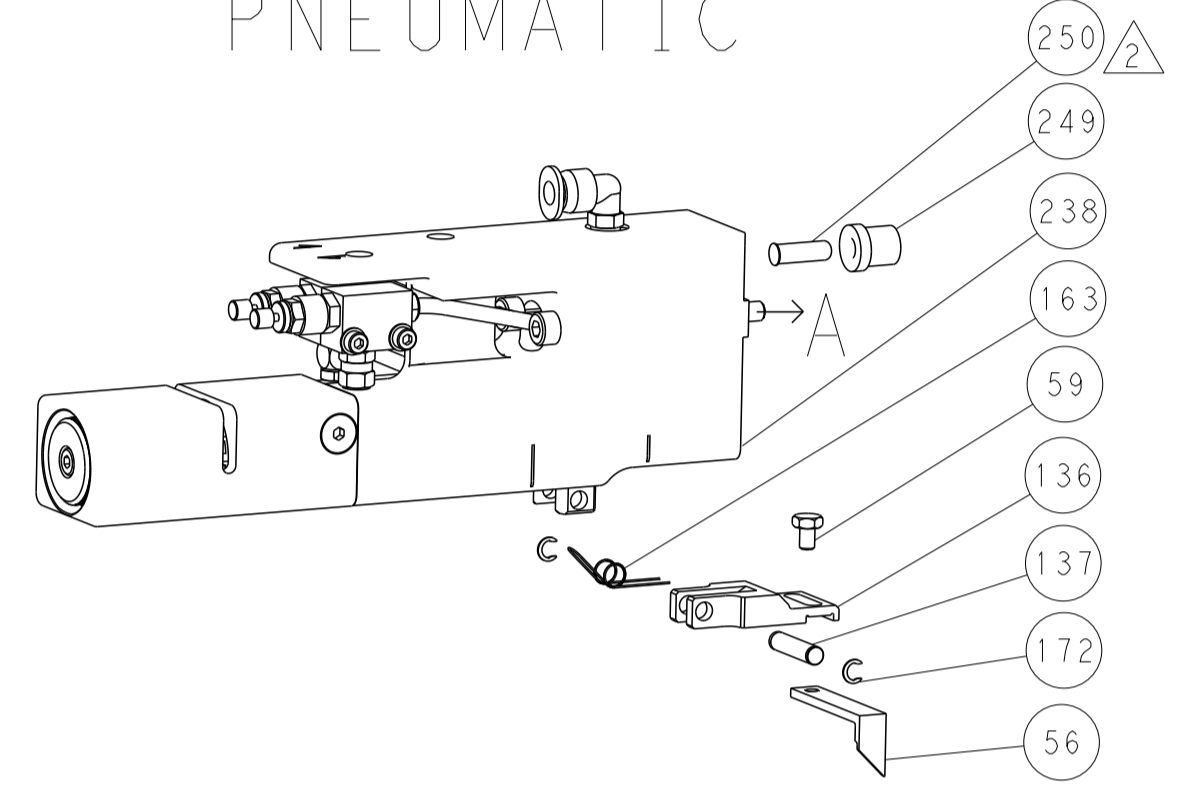
DIMENSIONS:		TOLERANCES UNLESS OTHERWISE SPECIFIED:		DWN	Y. YIN	17OCT2014	TE Connectivity Harrisburg, PA 17105-3608
mm	0 PLC ±0.5	1 PLC ±0.5	2 PLC ±0.13	CHK	G. BAILEY	17OCT2014	
	3 PLC ±0.013	4 PLC ±0.001	ANGLES ±0.0001	APVD	J. GUO	17OCT2014	NAME
MATERIAL:	FINISH:	WEIGHT:	SCALE	Customer Accessible Production Drawing		SIZE	CAGE CODE
			1:2			A1	00779
		SHEET 2 OF 4		DRAWING NO		REV A	
				©=2266532			

LOC		DIST		REVISIONS			
A	66	P	LTH	DESCRIPTION	DATE	OWN	APVD
		-		SEE SHEET 1			

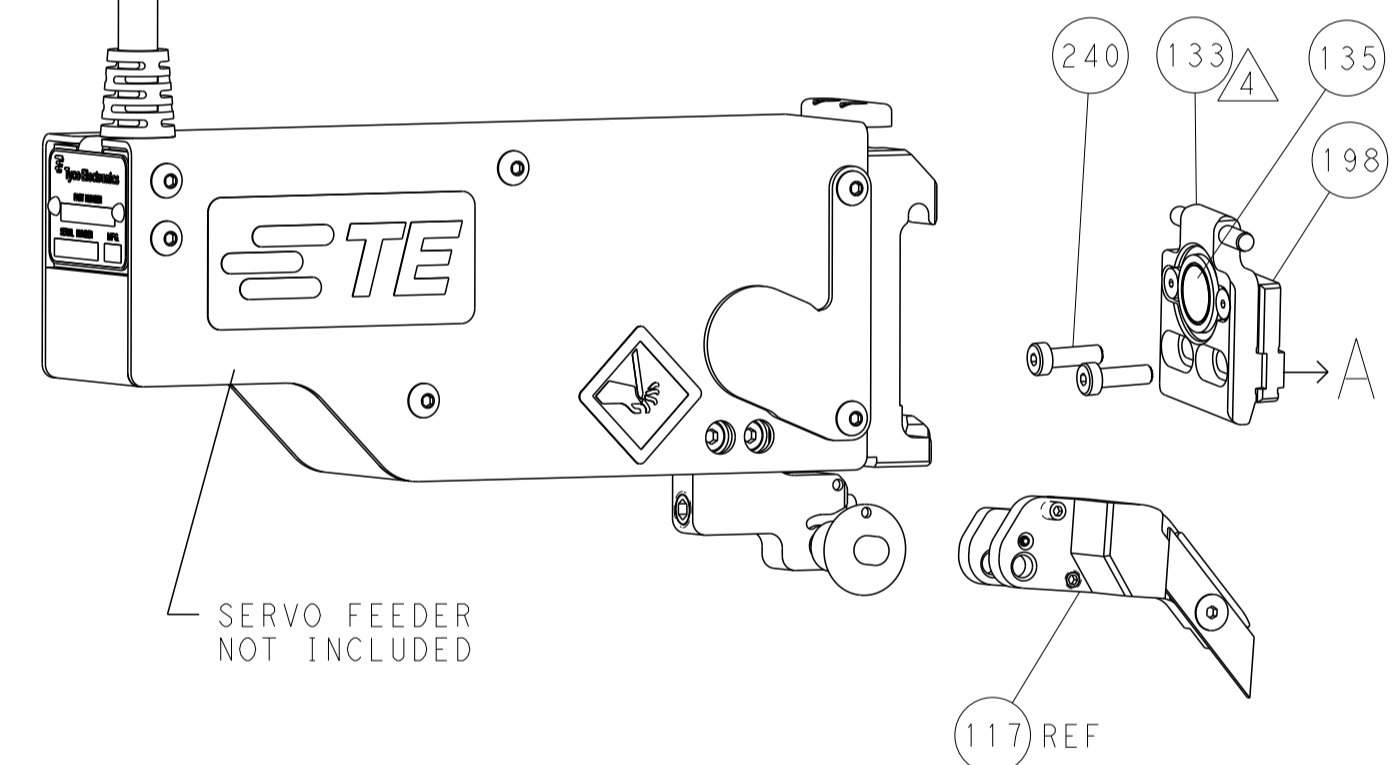
FEED TYPE MECHANICAL



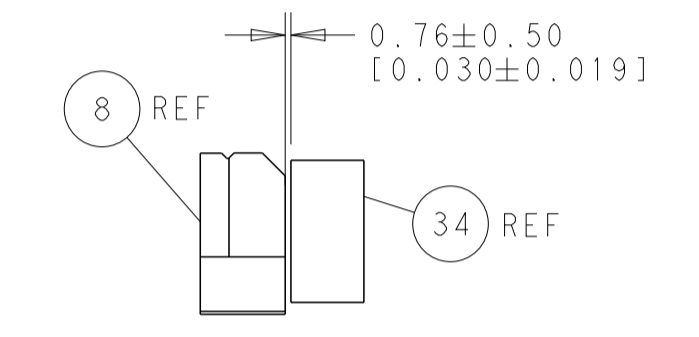
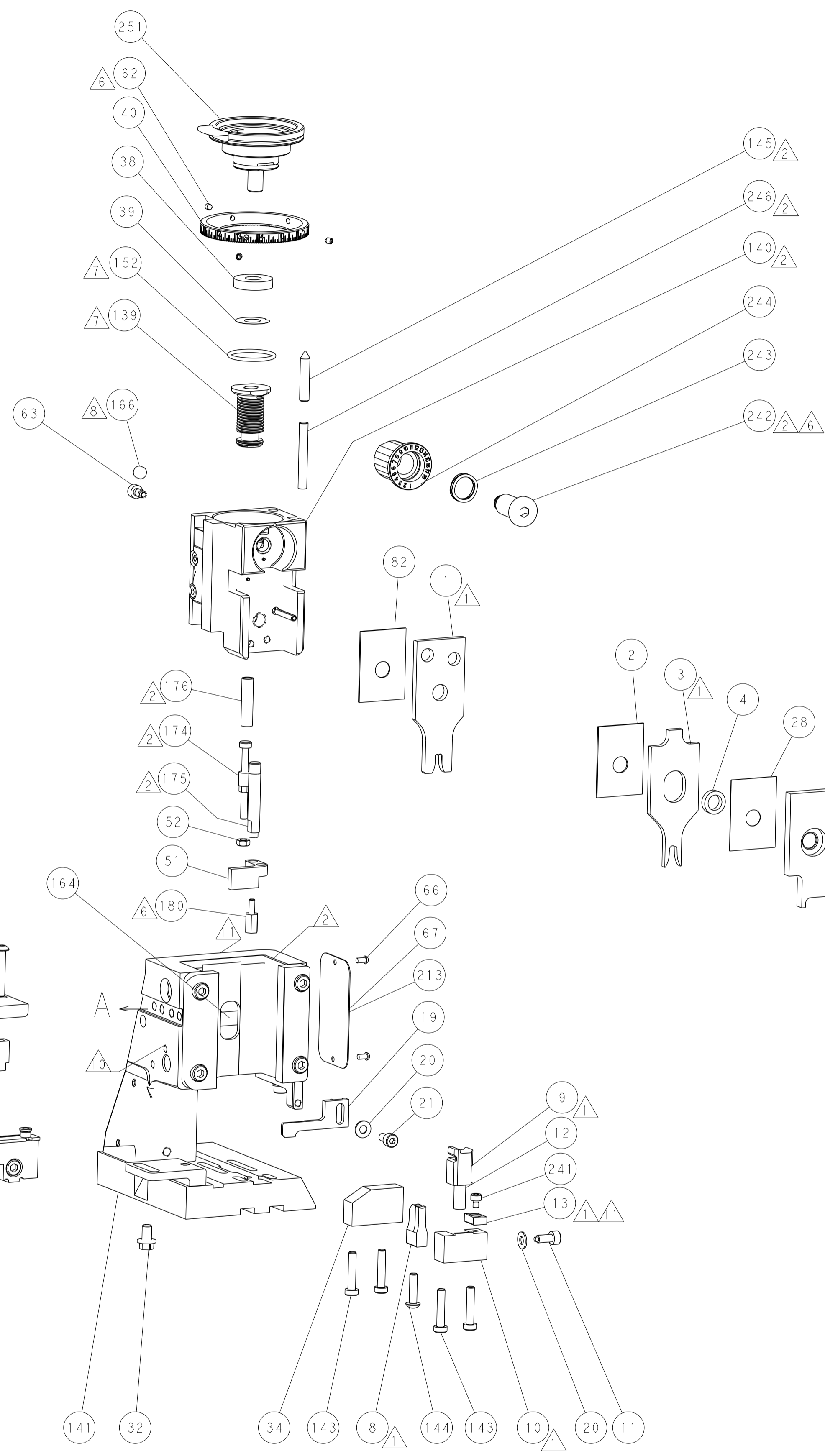
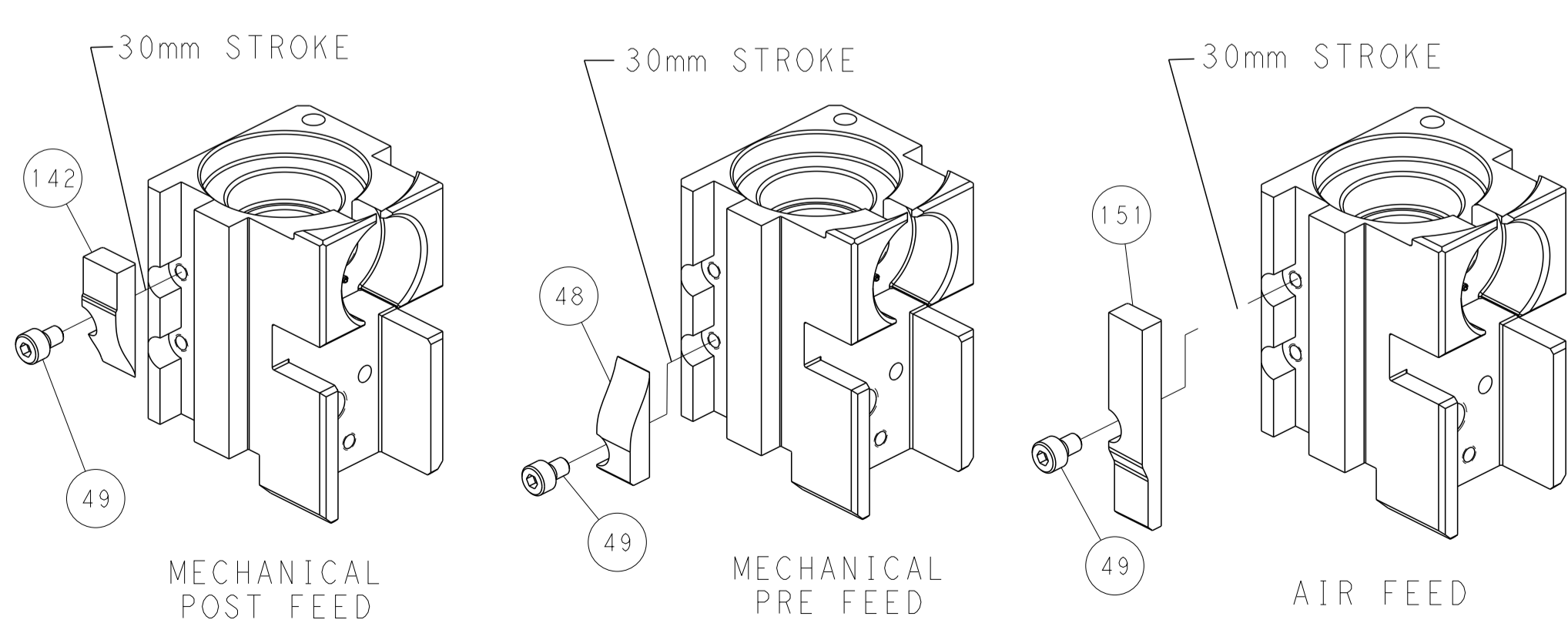
PNEUMATIC



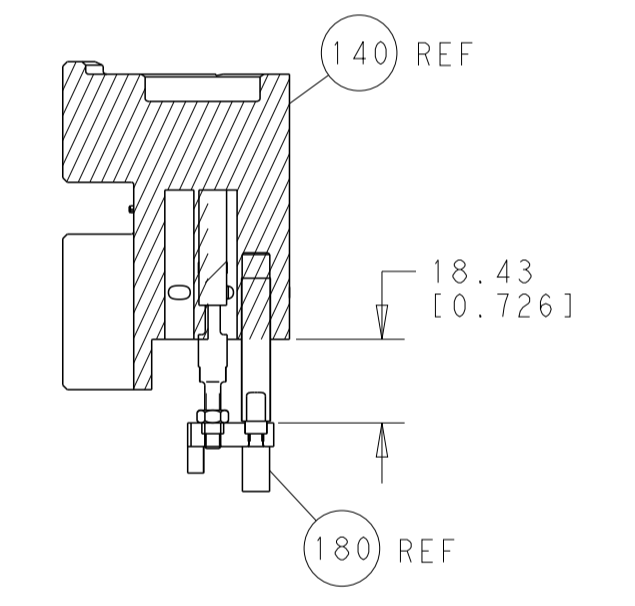
SERVO LATCH PLATE



CAM POSITIONS

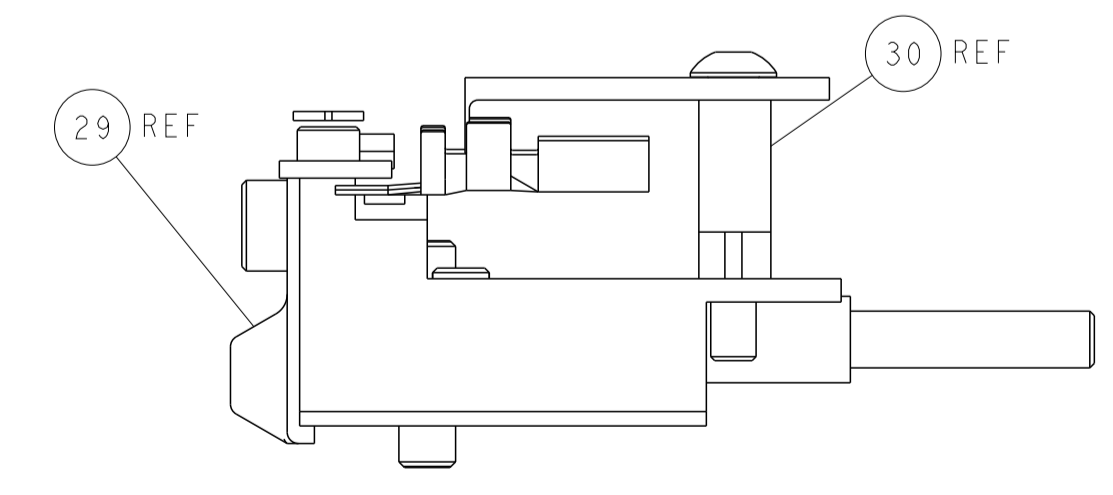


TERMINAL SUPPORT LOCATION



HOLDDOWN SET-UP

ITEM 30 LOCATED AT FRONT HOLES



FEED TRACK POSITION GUIDE BY INSULATION BARREL

PACIFIC VERSION
 Shown on sheets 3 of 4 & 4 of 4
 (Atlantic version shown on sheets 1 of 4 & 2 of 4)

DIMENSIONS:		TOLERANCES UNLESS OTHERWISE SPECIFIED:		DWN Y. YIN 17OCT2014		TE Connectivity	
mm	0 PLC ±0.5	1 PLC ±0.5	2 PLC ±0.13	3 PLC ±0.013	4 PLC ±0.001	APVD H. GUO 17OCT2014	Harrisburg, PA 17105-3608
MATERIAL:		FINISH:		NAME		Ocean Side Feed Applicator	
				SIZE CAGE CODE DRAWING NO		RESTRICTED TO	
				A1 00779 C=2266532			
				Customer Accessible Production Drawing		SCALE 1:2 SHEET 4 OF 4 REV A	