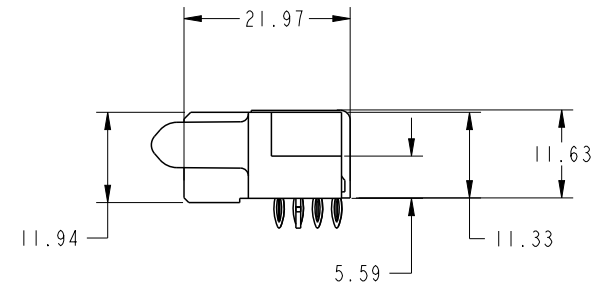
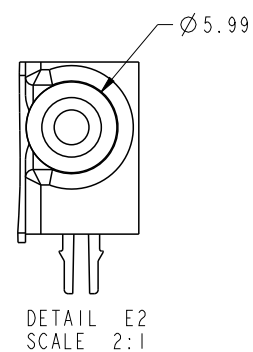
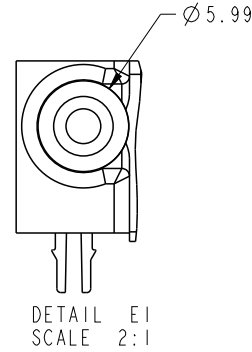
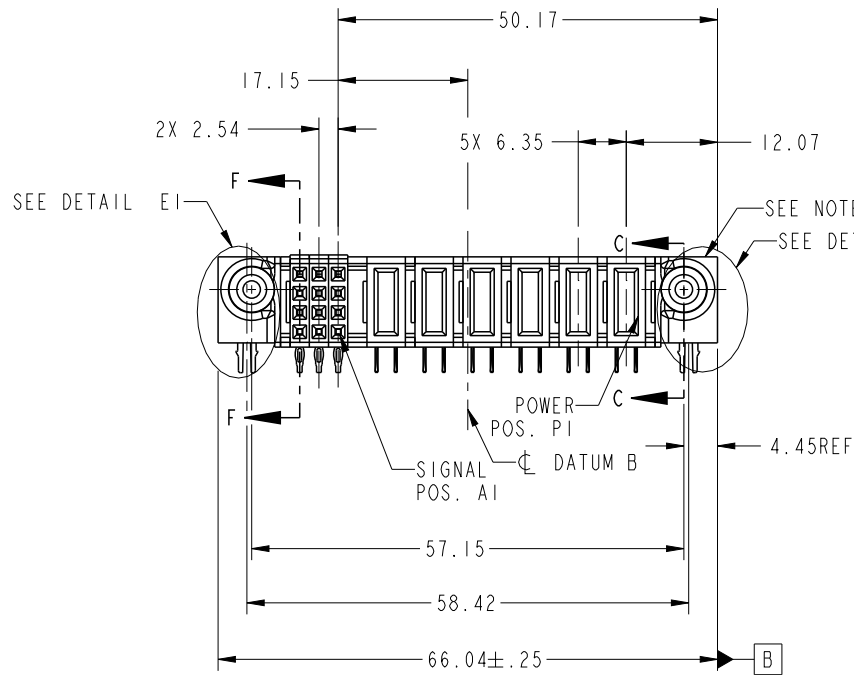


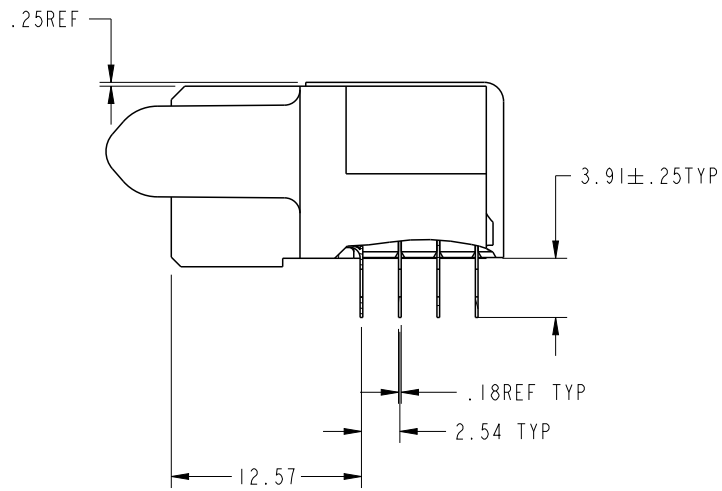
PRODUCT NO. 51915-092PGSA-- NOTE ③	ROWS D C B A	SIGNAL						POWER					
		E2	3	2	1	P6	P5	P4	P3	P2	P1	E1	
		SS	RR	RR	RR	PF	PE	PE	PF	PF	PF		
		PP	PP	PP	PP								
		NN	NN	NN	NN								



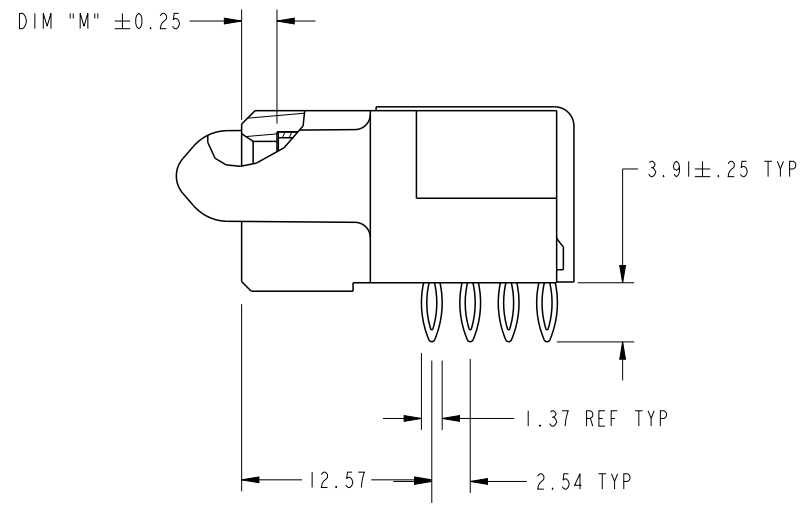
CODE	DIM "M" MATING LENGTH	CONTACT TYPE
PF	[2.34]	POWER
S	[N/A]	SIGNAL
R	[N/A]	SIGNAL
P	[N/A]	SIGNAL
N	[N/A]	SIGNAL
HA	[N/A]	HOLD-DOWN
PE	[1.07]	POWER

spec ref	*	dr	Luo Weller	2013/08/15	projection	MM	size	A4	scale	1:1
tolerance std	TOLERANCES UNLESS OTHERWISE SPECIFIED	eng	Luo Weller	2013/11/28		←→	ecn no	-	rel level	Released
		chr	-	-						
		appr	Pei-Ming Zheng	2013/11/28	product family	PwrBlade				
surface	✓			www.fci.com	title	6P + 12S	dwg no	51915-092PGSA	rev	A
	linear	0.X			±0.5	R/A PRESS-FIT RECEPTACLE				
		0.XX			±0.25					
		0.XXX	±0.1	cat. no.	-	Product - Customer Drw	sheet 1 of 4			
	angular	0°	±2°							

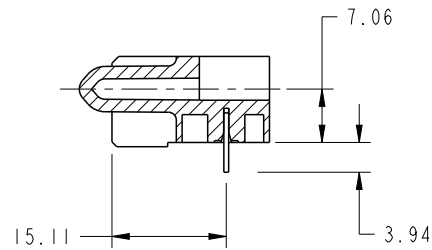
PRODUCT NUMBER
51915-092PGSA_
NOTE (3)



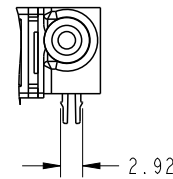
SECTION F-F
SCALE 2:1



SECTION D-D
SCALE 2:1

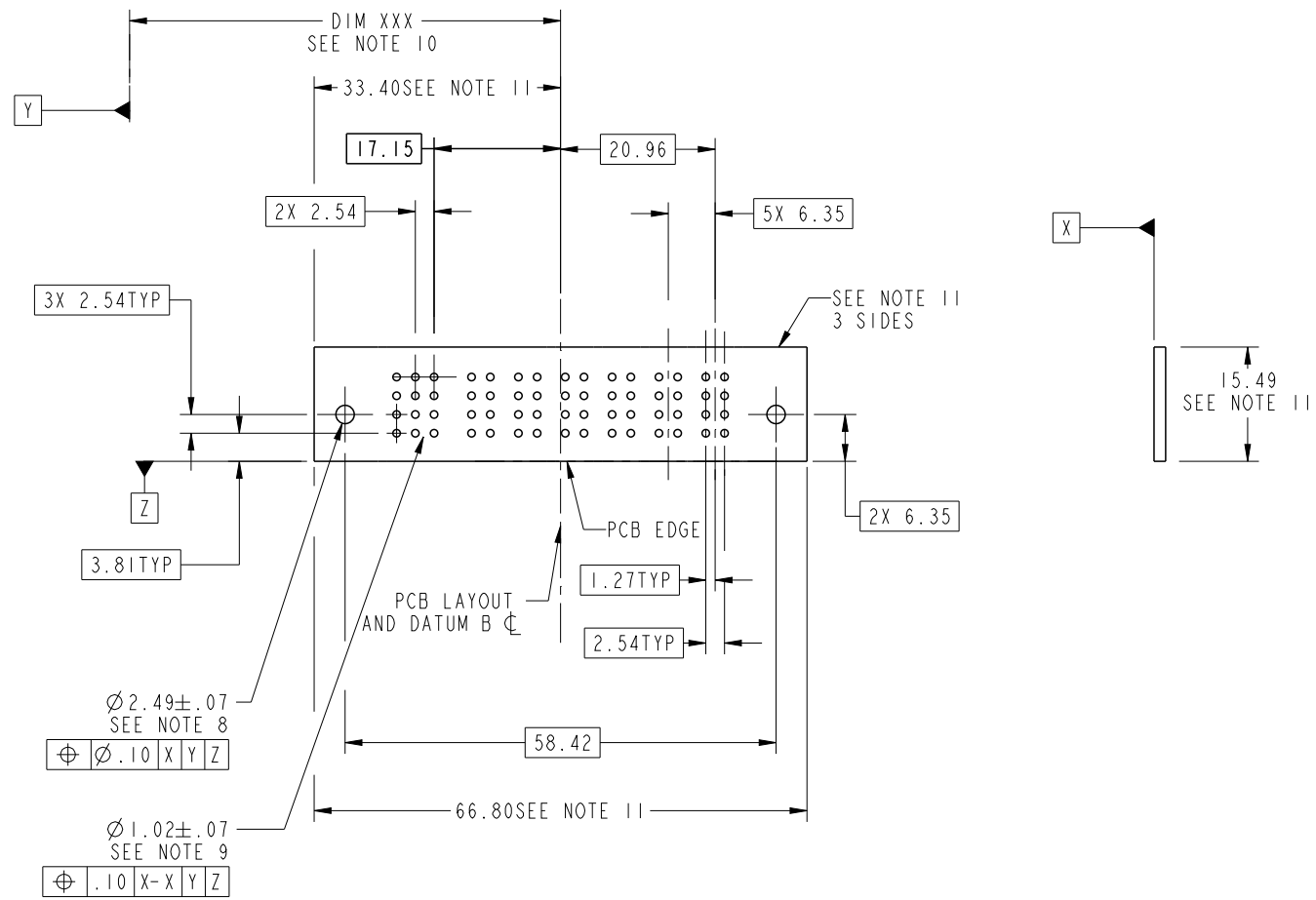


SECTION C-C



dr	Luo Weller	2013/08/15	projection 	MM ←————→	size	A4	scale	1:1
eng	Luo Weller	2013/11/28			ecn no	-		
chr	-	-						
appr	Pei-Ming Zheng	2013/11/28	product family	PwrBlade	rel level	Released		
	title	6P + 12S R/A PRESS-FIT RECEPTACLE		dwg no	51915-092PGSA		rev	A
www.fci.com	cat. no.	-	Product - Customer Drw			sheet 2 of 4		

PRODUCT NUMBER
51915-092PGSA--
NOTE ③



dr	Luo Weller	2013/08/15	projection 	MM 	size	A4	scale	1:1	
eng	Luo Weller	2013/11/28			ecn no	-			
chr	-	-			rel level	Released			
appr	Pei-Ming Zheng	2013/11/28	product family	PwrBlade					
	title	6P + 12S R/A PRESS-FIT RECEPTACLE			dwg no	51915-092PGSA		rev	A
www.fci.com	cat. no.	-	Product - Customer Drw			sheet 3 of 4			



Copyright FCI.

PRODUCT NUMBER
51915-092PGSA--
NOTE (3)

NOTES:

1. DIMENSIONS AND TOLERANCES ARE IN ACCORDANCE WITH ASME Y14.5M, 1994 UNLESS OTHERWISE SPECIFIED.

CONNECTOR NOTES:

(2.) HOUSING MATERIAL: UL 94 V-0 GLASS FILLED
HIGH-TEMP THERMOPLASTIC
POWER CONTACT MATERIAL: COPPER ALLOY
SIGNAL PIN MATERIAL: COPPER ALLOY

3. SEE ITEM 7 & 8 IN PRINT 10125789 FOR PLATING SPEC OF 51915-092PGSA AND 51915-092PGSALF RESPECTIVELY.

(4.) MANUFACTURER'S NAME, P/N, AND DATE CODE TO APPEAR ON THIS SURFACE.

5. PRODUCT SPECIFICATION GS-12-149.
APPLICATION SPECIFICATION BUS-20-067.

6. PACKAGED IN TRAYS.

PCB NOTES:

7. ALL HOLE DIAMETERS ARE FINISHED HOLE SIZE.

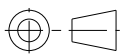
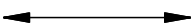

(8.) MOUNTING HOLES, WHERE APPLICABLE, ARE UNPLATED.

(9.) $\varnothing .0453 \pm .0010$ [1.151 \pm 0.025] DRILLED HOLES PLATED WITH
.0003 [0.008] MIN SnPb OR Sn OVER .001 [0.03]
TO .003 [0.08] Cu PLATING TO ACHIEVE
 $\varnothing .040 \pm .003$ [1.02 \pm .07] HOLE.

(10.) "DIM XXX" TO BE DETERMINED BY THE CUSTOMER.

(11.) CONNECTOR KEEP-OUT ZONE.

12. THE VOID CORING IN BETWEEN POWER MODULES, SIGNAL MODULES AND END MODULES ARE OPTIONAL AND THE SHAPE MAY BE DIFFERENT FOR OPTIMIZE THE MOLDING PROCESS. THE VOID CORING WILL NOT EFFECT TO PRODUCT FUNCTION.

dr	Luo Weller	2013/08/15	projection 	MM 	size	A4	scale	1:1	
eng	Luo Weller	2013/11/28			ecn no	-			
chr	-	-							
appr	Pei-Ming Zheng	2013/11/28	product family	PwrBlade	rel level	Released			
	title	6P + 12S R/A PRESS-FIT RECEPTACLE			dwg no	51915-092PGSA		rev	A
www.fci.com	cat. no.	-	Product - Customer Drw			sheet 4 of 4			