

NOTE:

1.MATERIAL:
HOUSING:HIGH TEMPERATURE NYLON,GLASS FIBRE FILLED,UL94-V0,COLOR:BLACK
TERMINAL:PHOSPHOR BRONZE
METAL SHELL:DEEP DRAWN STEEL

2.PLATING:
TERMINAL:
(a)GLOD FIASH ON THE CONTACT AREA,AND 75MICROINCH MINIMUM PURE TIN ON SOLDER TAIL, UNDER 50MICROINCH MINIMUM Ni PLATE.

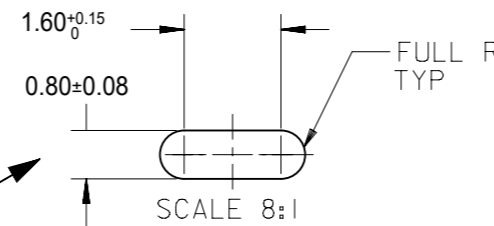
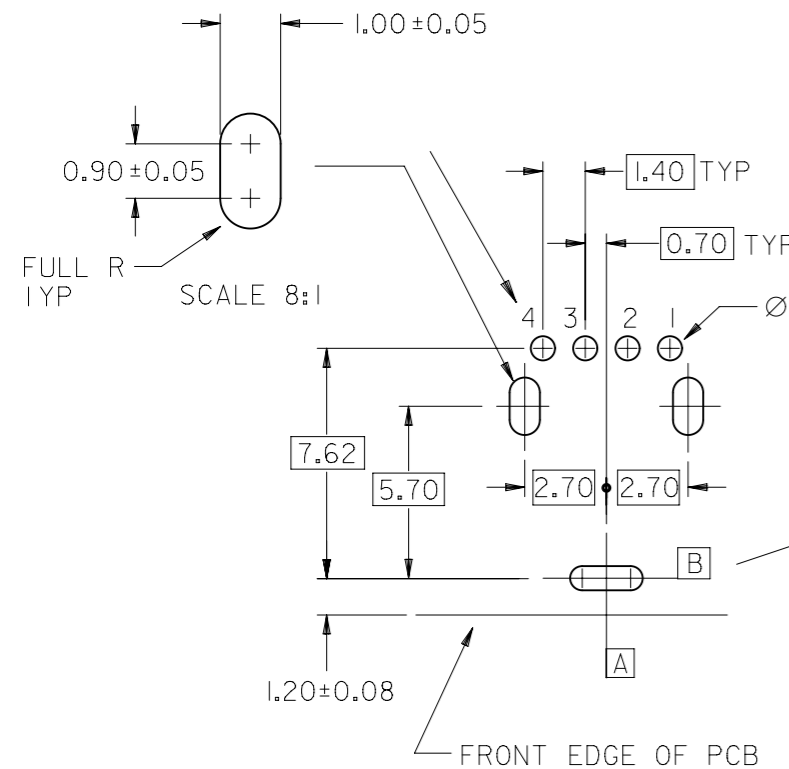
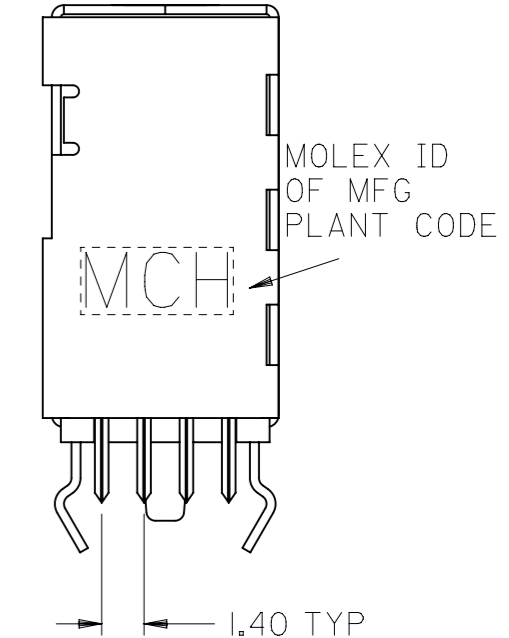
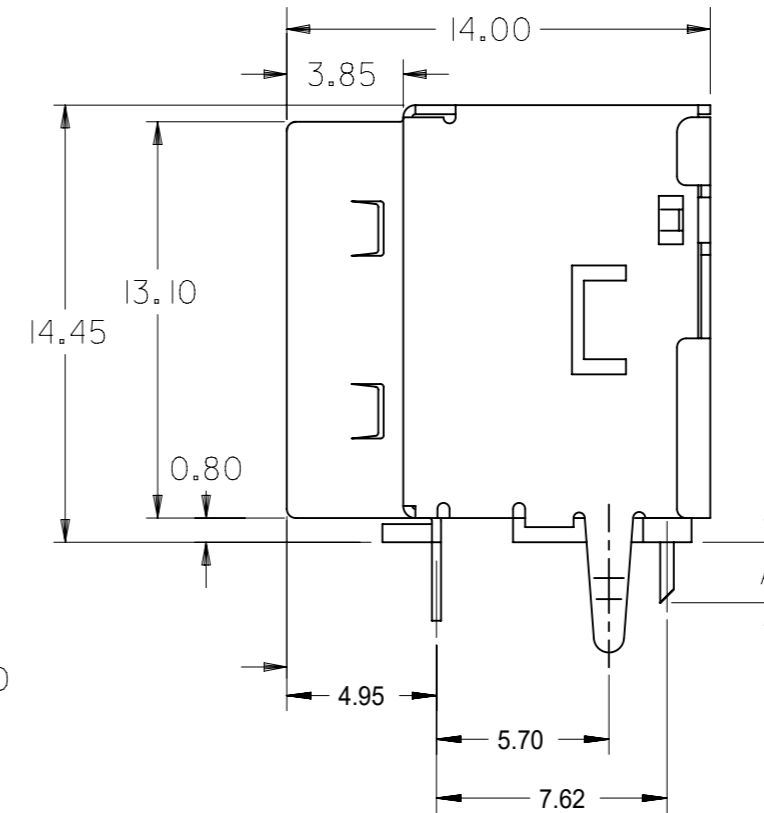
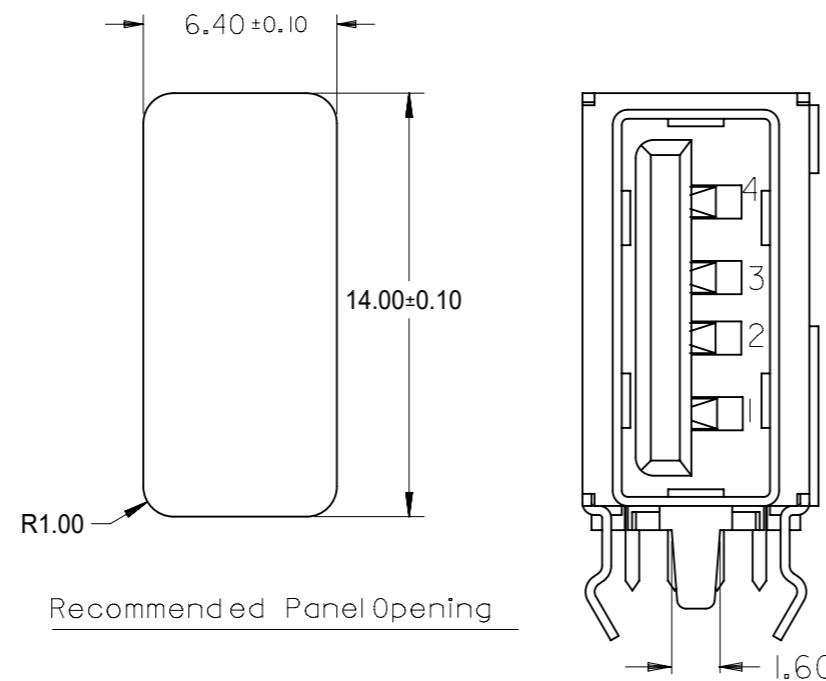
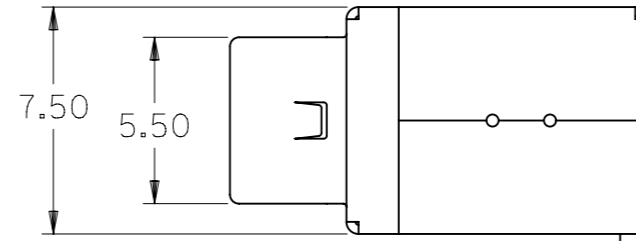
(b)30MICROINCH MINIMUM GOLD(Au) ON THE CONTACT AREA, AND 75MICROINCH MINIMUM PURE TIN ON SOLDER TAIL,UNDER 50MICROINCH MINIMUM Ni UNDER PLATE.

(c)GOLD FIASH ON THE CONTACT AREA,AND 75MICROINCH MINIMUM MATTE TIN ON SOLDER TAIL,UNDER 50MICROINCH MINIMUM Ni PLATE.

METAL SHELL:
(d)100MICROINCH MINIMUM BRIGHT TIN ON THE METAL SHELL,AND 50MICROINCH MINIMUM Ni AND 100MICROINCH MINIMUM Cu PLATE.
(e)100MICROINCH MINIMUM MATTE TIN ON THE METAL SHELL,AND 50MICROINCH MINIMUM Ni AND 100MICROINCH MINIMUM Cu PLATE.

3.RECOMMENDED PCB THICKNESS:1.60 ±0.05mm
4.PRODUCT SPECIFICATION:REFER TO PS-89485
5. TRAY PACKAGING SPECIFICATION REFER TO:PK-89485-002
TUBE PACKAGING SPECIFICATION REFER TO:PK-89485-001

DIMENSION"A"	P/N	PLATING	TERMINAL CONTACT PLATING	TERMINAL SOLDER PLATING	METAL SHELL PLATING
2.00	+0.35	89485-8000	SEE NOTES(a)+(d)	GOLD FLASH	75 MICRO INCH BRIGHT TIN 100 MICRO INCH BRIGHT TIN
	-0.15	89485-8001	SEE NOTES(b)+(d)	30 MICRO INCH GOLD	
2.50	+0.35	89485-8002	SEE NOTES(a)+(d)	GOLD FLASH	
	-0.10	89485-8003	SEE NOTES(b)+(d)	30 MICRO INCH GOLD	



PRE-RELEASE REFERENCE USE ONLY

THIS DRAWING CONTAINS INFORMATION THAT IS PROPRIETARY TO MOLEX ELECTRONIC TECHNOLOGIES, LLC AND SHOULD NOT BE USED WITHOUT WRITTEN PERMISSION													
DIMENSION UNITS		SCALE		CURRENT REV DESC: REMOVED OBSOLETE PART NUMBER AS PER PCN#508521/511698.									
mm		1:1											
GENERAL TOLERANCES (UNLESS SPECIFIED)													
		MM		INCH		SINGLE PORT UP-RIGHT USB CONNECTOR PRODUCT CUSTOMER DRAWING DOCUMENT NUMBER: SD-89485-003 DOC TYPE: PSD DOC PART: 003 REVISION: G							
4 PLACES		±		±						EC NO: 742551		2021/04/14	
3 PLACES		±		±						DRWN: ABHISP1		2023/05/12	
2 PLACES		± 0.25		± 0.01						CHK'D: GGA		2023/05/12	
1 PLACE		± 0.25		± 0.01						APPR: GGA		2023/05/12	
0 PLACES		±		±		INITIAL REVISION:							
ANGULAR TOL		± 3.0°		± 3.0°		DRWN: DAVID HU							
DRAFT WHERE APPLICABLE MUST REMAIN WITHIN DIMENSIONS		THIRD ANGLE PROJECTION		DRAWING		SERIES		MATERIAL NUMBER					
				A3-SIZE		89485		SEE TABLE					
						CUSTOMER		GENERAL MARKET					
								SHEET NUMBER					
								1 OF 1					