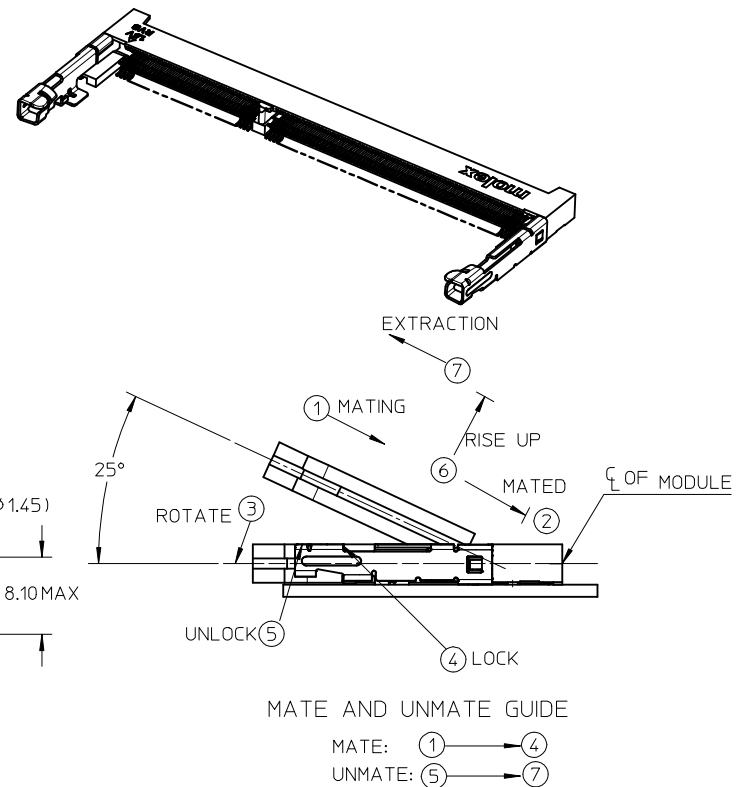
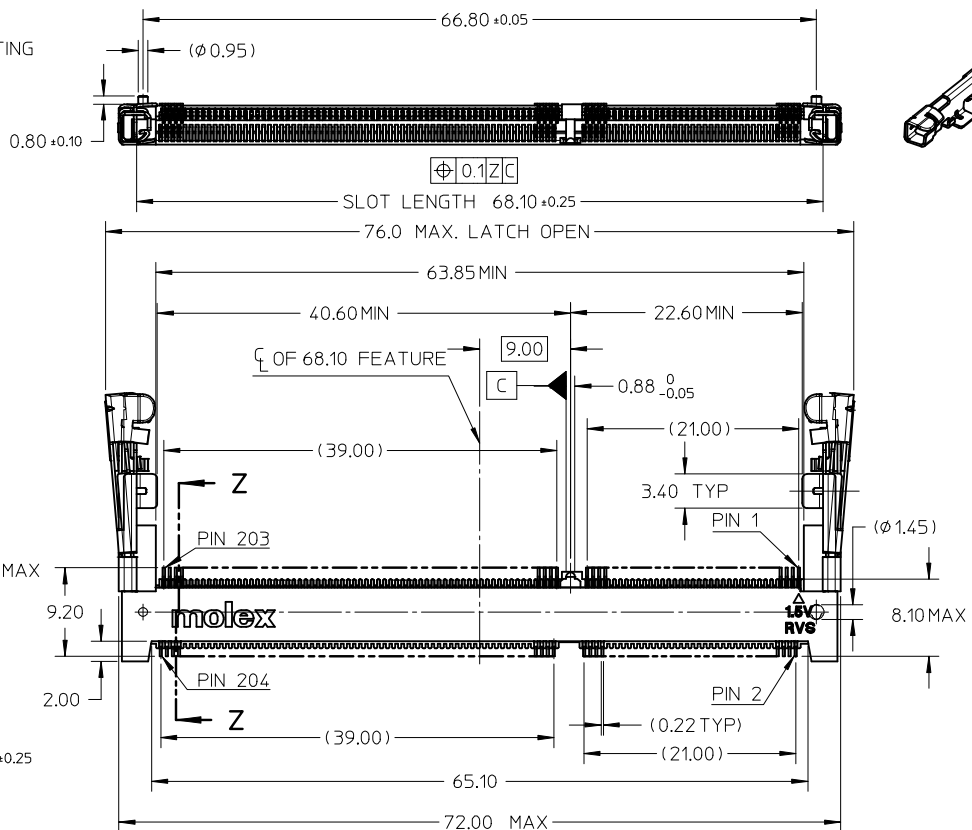
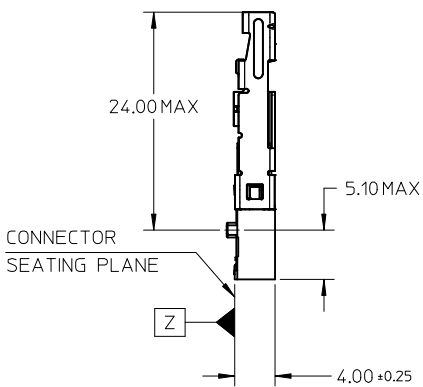


SECTION Z-Z

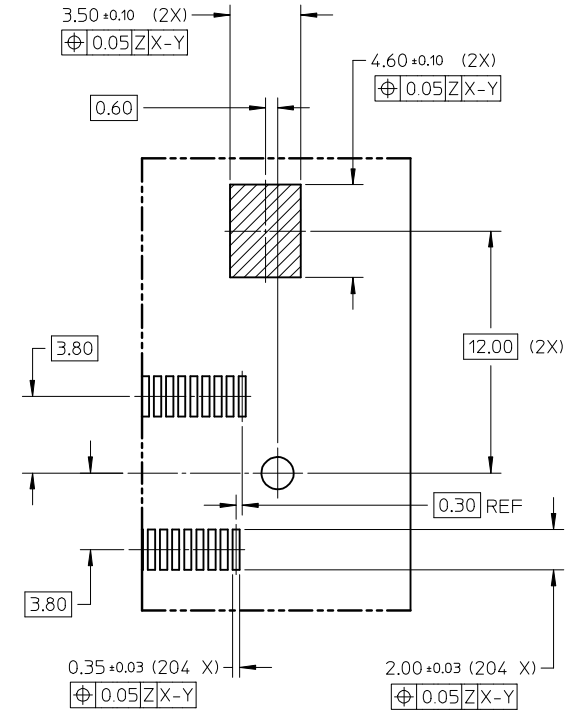
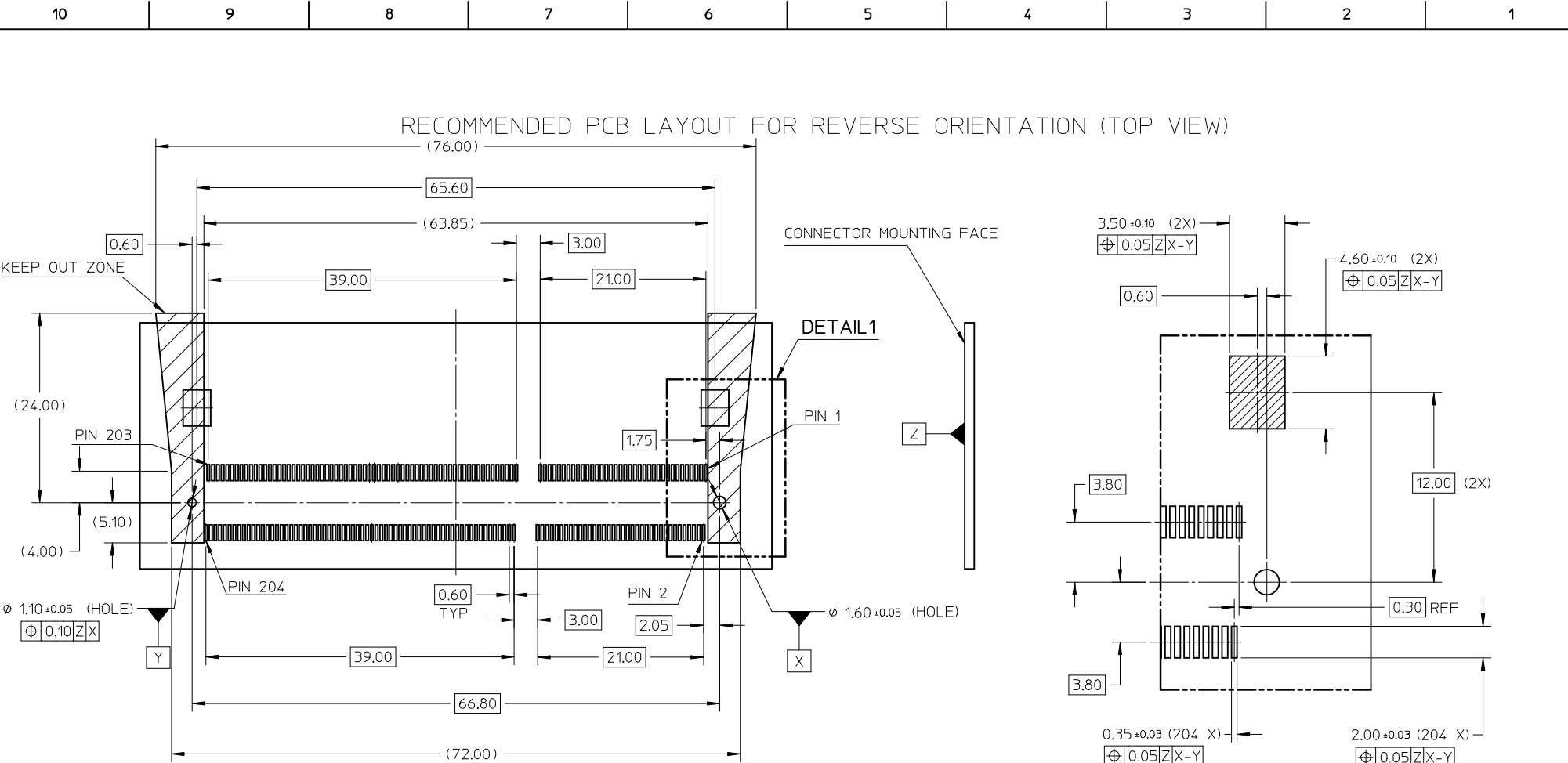


NOTE :

- MATERIAL:
HOUSING : LCP - UL94V-0, COLOR: BLACK
CONTACTS : COPPER ALLOY
LOCK LEVER : STAINLESS STEEL
- FINISHES:
CONTACT AREA : REFER TABLE.
SOLDER TAIL AREA : GOLD FLASH OVER 50μN/1.27μM NICKEL.
LOCK LEVER SOLDER PAD: 100μN/2.54μM MATTE TIN OVER 50μN/1.27μM NICKEL.
- RECOMMENDED MODULE LAYOUT SHALL BE AS PER JEDEC MO-268
- PRODUCT SPEC AS PER - PS-78195-001 & PS-78195-003
- PART SHALL BE PACKED IN TRAY / TAPE & REEL
- EDGE OF CONTACT PADS SHALL BE FREE OF BURRS AND EXTERNAL TIE BARS
- THE ADDITION OF THIS BEVEL IS A FABRICATION OPTION AND IS NOT REQUIRED. THE BEVEL AIDS THE INSERTION OF THE MODULES INTO THE CONNECTOR.
THE BEVEL MUST NOT ENCR OACH ONTO GOLD PADS.
- COPLANARITY INCLUDES HOLD DOWN 0.1 MAX

PART NO.	CONTACT AREA FINISH	SOLDER TAIL FINISH	PACKAGING
78195-0001	3μN/0.076μM GOLD OVER 50μN/1.27μM NICKEL	GOLD FLASH OVER 50μN/1.27μM NICKEL	TRAY
78195-1501	15μN/0.38μM GOLD OVER 50μN/1.27μM NICKEL		
78195-3001	30μN/0.76μM GOLD OVER 50μN/1.27μM NICKEL	GOLD FLASH OVER 50μN/1.27μM NICKEL	TAPE & REEL
78195-0011	3μN/0.076μM GOLD OVER 50μN/1.27μM NICKEL		
78195-1511	15μN/0.38μM GOLD OVER 50μN/1.27μM NICKEL		
78195-3011	30μN/0.76μM GOLD OVER 50μN/1.27μM NICKEL		

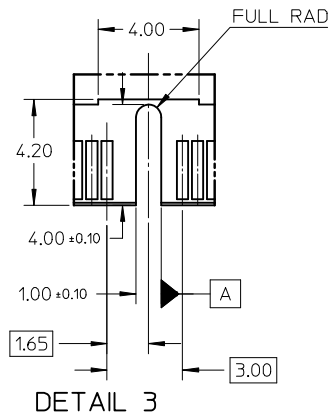
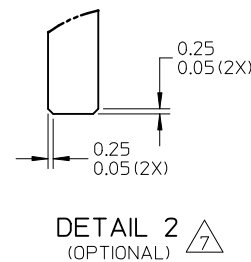
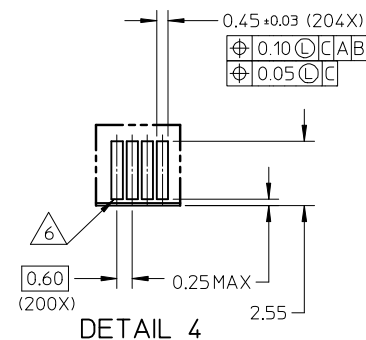
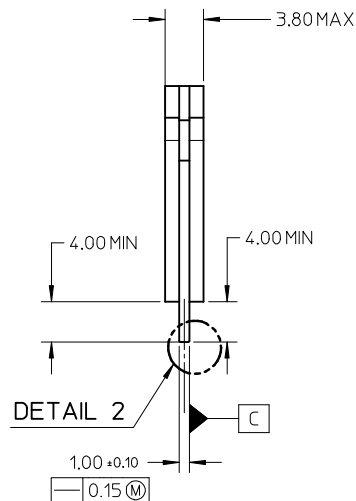
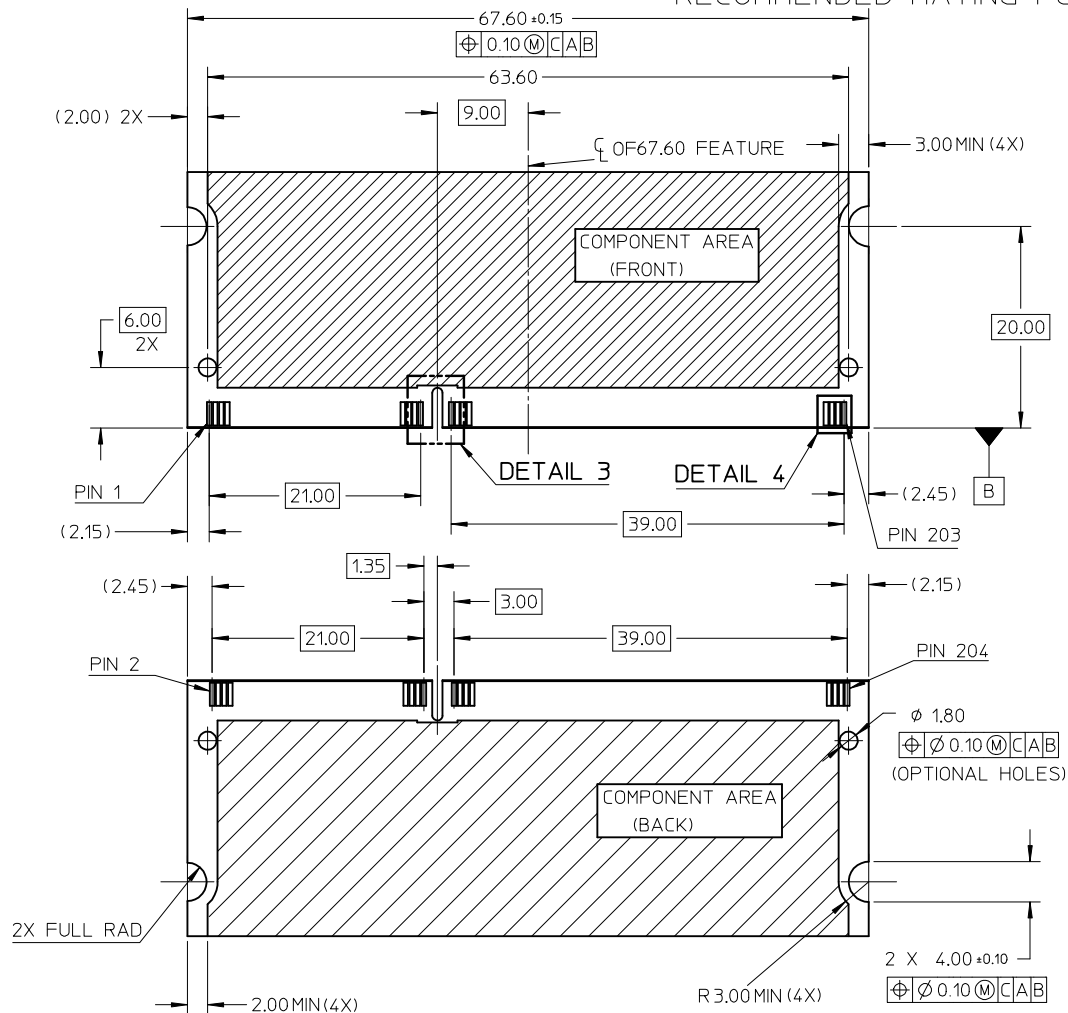
ADD GF DETAILS EC NO: S2010-0162 DRWN: TARUMUGHAM CHKD: CGTAN APPR: SHLENI	QUALITY SYMBOLS ▽=0 ◻=0	GENERAL TOLERANCES (UNLESS SPECIFIED)		DIMENSION STYLE MM ONLY	SCALE NTS	DESIGN UNITS METRIC	THIRD ANGLE PROJECTION	
		mm	INCH	DRAWN BY VMANICKAM	DATE 2007/08/07	TITLE DDR3 SODIMM		
		4 PLACES ± ---	± ---	CHECKED BY CCTEH	DATE 2007/09/03	204 CKTS, 4.0MM HEIGHT REVERSE ORIENTATION		
		3 PLACES ± ---	± ---	APPROVED BY SHLENI	DATE 2007/09/03	MOLEX INCORPORATED		
DRAFT WHERE APPLICABLE MUST REMAIN WITHIN DIMENSIONS		ANGULAR ± 2 °		MATERIAL NO. SEE TABLE	DOCUMENT NO. SD-78195-001	SHEET NO. 1 OF 5		
THIS DRAWING CONTAINS INFORMATION THAT IS PROPRIETARY TO MOLEX INCORPORATED AND SHOULD NOT BE USED WITHOUT WRITTEN PERMISSION								



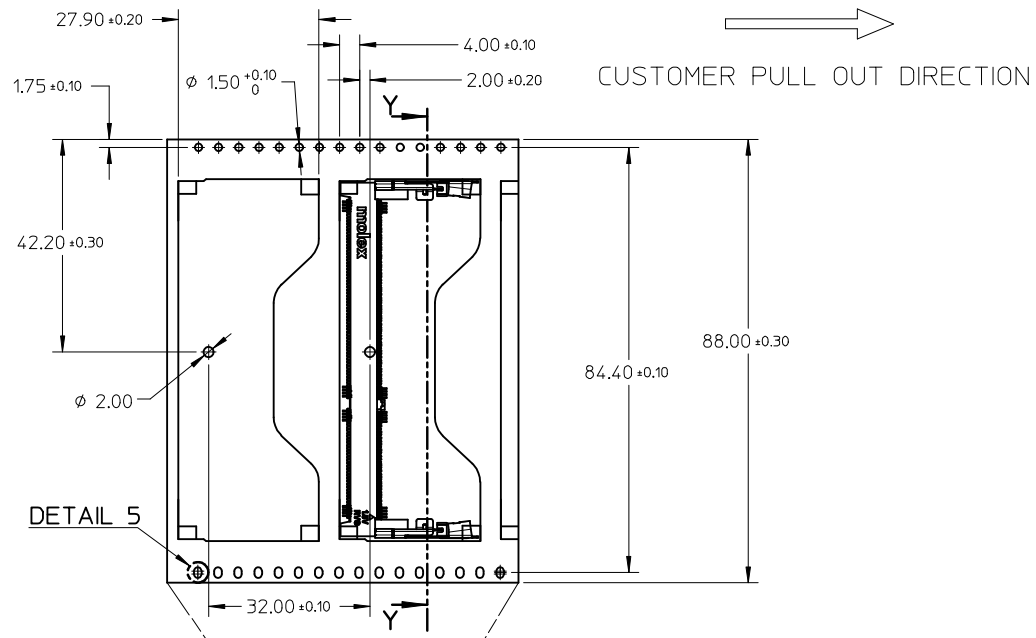
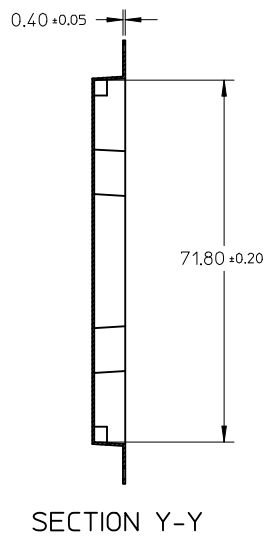
DETAIL 1

ADD GF DETAILS EC NO: S2010-0162 DRWN: TARUMUGHAM 2009/08/28 CHKD: CGTAN 2009/08/28 APPR: SHLENI 2009/09/02	REV DESCRIPTION A3	QUALITY SYMBOLS	GENERAL TOLERANCES (UNLESS SPECIFIED)	DIMENSION STYLE	SCALE	DESIGN UNITS	THIRD ANGLE PROJECTION															
		$\nabla = 0$ $\square = 0$	<table border="1"> <thead> <tr> <th></th> <th>mm</th> <th>INCH</th> </tr> </thead> <tbody> <tr> <td>4 PLACES</td> <td>± ---</td> <td>± ---</td> </tr> <tr> <td>3 PLACES</td> <td>± ---</td> <td>± ---</td> </tr> <tr> <td>2 PLACES</td> <td>± 0.2</td> <td>± ---</td> </tr> <tr> <td>1 PLACE</td> <td>± ---</td> <td>± ---</td> </tr> </tbody> </table>		mm	INCH	4 PLACES	± ---	± ---	3 PLACES	± ---	± ---	2 PLACES	± 0.2	± ---	1 PLACE	± ---	± ---	MM ONLY	NTS	METRIC	
			mm	INCH																		
		4 PLACES	± ---	± ---																		
3 PLACES	± ---	± ---																				
2 PLACES	± 0.2	± ---																				
1 PLACE	± ---	± ---																				
DRAFT WHERE APPLICABLE MUST REMAIN WITHIN DIMENSIONS				DRAWN BY: VMANICKAM CHECKED BY: CCTEH APPROVED BY: SHLENI MATERIAL NO.	DATE: 2007/08/07 DATE: 2007/09/03 DATE: 2007/09/03	TITLE: DDR3 SODIMM 204 CKTS, 4.0MM HEIGHT REVERSE ORIENTATION MOLEX INCORPORATED DOCUMENT NO. SD-78195-001																
				SIZE: A3 THIS DRAWING CONTAINS INFORMATION THAT IS PROPRIETARY TO MOLEX INCORPORATED AND SHOULD NOT BE USED WITHOUT WRITTEN PERMISSION	SHEET NO. 2 OF 5																	

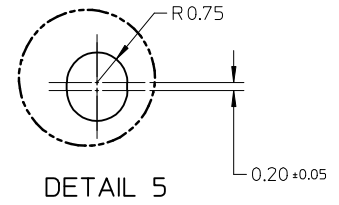
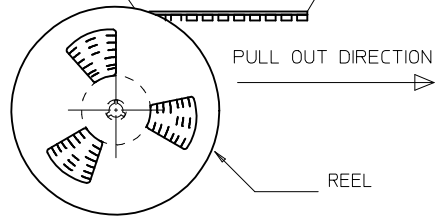
RECOMMENDED MATING PCB CONFIGURATION



ADD GF DETAILS EC NO: S2010-0162 DRWN: TARUIGHAM CHKD: CGTAN APPR: SHLENI	DESCRIPTION 2009/08/28 2009/08/28 2009/09/02	QUALITY SYMBOLS	GENERAL TOLERANCES (UNLESS SPECIFIED)		DIMENSION STYLE MM ONLY		SCALE NTS	DESIGN UNITS METRIC	THIRD ANGLE PROJECTION	
		$\nabla = 0$ $\text{C} = 0$	mm	INCH	DRAWN BY VMANICKAM	DATE 2007/08/07	TITLE DDR3 SODIMM			
			4 PLACES ± --- ± ---	3 PLACES ± --- ± ---	CHECKED BY CCTEH	DATE 2007/09/03	204 CKTS, 4.0MM HEIGHT REVERSE ORIENTATION			
			2 PLACES ± 0.2 ± ---	1 PLACE ± --- ± ---	APPROVED BY SHLENI	DATE 2007/09/03	MOLEX INCORPORATED			
		ANGULAR ± 2 °	DRAFT WHERE APPLICABLE MUST REMAIN WITHIN DIMENSIONS		MATERIAL NO. SEE TABLE		DOCUMENT NO. SD-78195-001		SHEET NO. 3 OF 5	

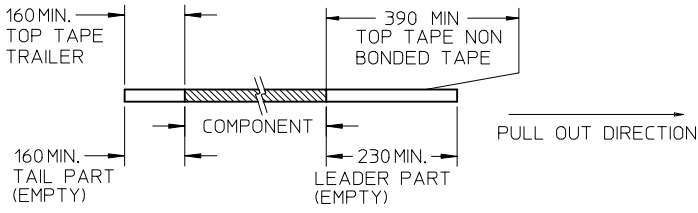


DETAIL 5

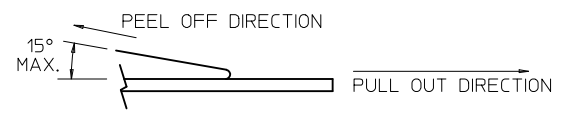


NOTES:

1. LEADER AND TRAILER TAPE



2. PEELING OFF FORCE OF THE TOP TAPE: 10 - 150gf AS PER EIA-481-B (PEELING DIRECTION AS SHOWN IN FOLLOWING FIGURE)



- 3. TAPE AND REEL SPECIFICATION IS AS PER EIA-481.
- 4. TAPE AND REEL QUANTITY : 250 PCS/ REEL.
- 5. THE TAPE IS TREATED FOR ANTI-STATIC.

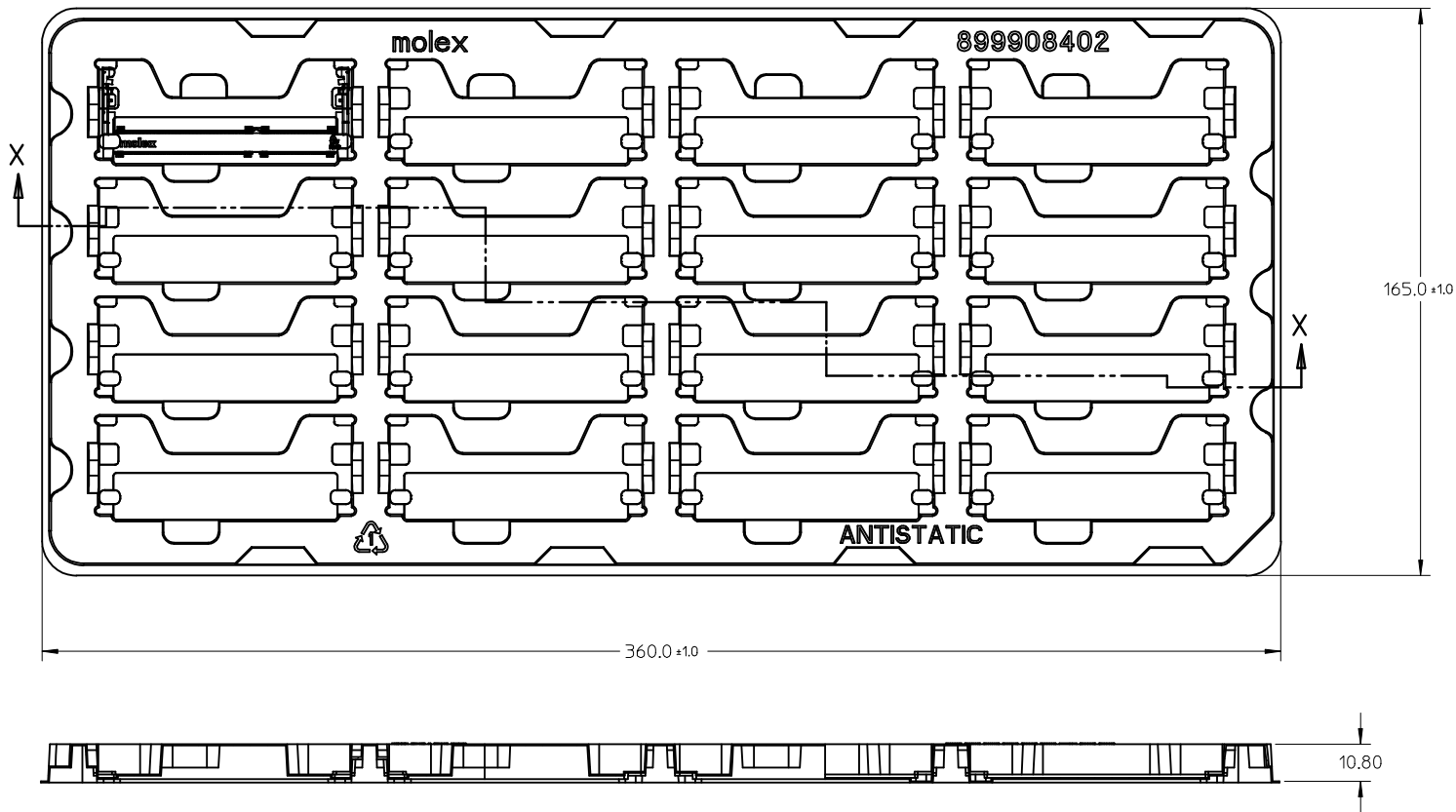
ADD GF DETAILS	EC NO: S2010-0162	2009/08/28	2009/08/28	2009/09/02
	DRWN: TARUNGHAM	CHKD: CGTAN	APPR: SHLENI	
A3	REV	DESCRIPTION		

QUALITY SYMBOLS	▽=0
	◻=0

GENERAL TOLERANCES (UNLESS SPECIFIED)	mm	INCH
	4 PLACES ± ---	± ---
	3 PLACES ± ---	± ---
	2 PLACES ± 0.2	± ---
	1 PLACE ± ---	± ---
ANGULAR ± 2 °		
DRAFT WHERE APPLICABLE MUST REMAIN WITHIN DIMENSIONS		

DIMENSION STYLE		SCALE	DESIGN UNITS	THIRD ANGLE PROJECTION
MM ONLY		NTS	METRIC	
DRAWN BY	DATE	TITLE		
VMANICKAM	2007/08/07	DDR3 SODIMM		
CHECKED BY	DATE	204 CKTS, 4.0MM HEIGHT		
CCTEH	2007/09/03	REVERSE ORIENTATION		
APPROVED BY	DATE	MOLEX INCORPORATED		
SHLENI	2007/09/03	DOCUMENT NO. SD-78195-001		
MATERIAL NO.		SHEET NO. 4 OF 5		
SEE TABLE		THIS DRAWING CONTAINS INFORMATION THAT IS PROPRIETARY TO MOLEX INCORPORATED AND SHOULD NOT BE USED WITHOUT WRITTEN PERMISSION		

10 9 8 7 6 5 4 3 2 1



SECTION X-X

- NOTES:
 1. DRAFT ANGLE OF 3° UNLESS OTHERWISE SPECIFIED
 2. CAVITY QTY: 4X4=16

ADD GF DETAILS EC NO: S2010-0162 DRWN: TARUIGHAM 2009/08/28 CHKD: CGTAN 2009/08/28 APPR: SHLENI 2009/09/02	QUALITY SYMBOLS	GENERAL TOLERANCES (UNLESS SPECIFIED)		DIMENSION STYLE	SCALE	DESIGN UNITS	THIRD ANGLE PROJECTION	
	▼ = 0 ◻ = 0	mm	INCH	MM ONLY	NTS	METRIC		
		4 PLACES ± --- ± ---	3 PLACES ± --- ± ---	DRAWN BY	DATE	TITLE		
		2 PLACES ± 0.2 ± ---	1 PLACE ± --- ± ---	VMANICKAM	2007/08/07	DDR3 SODIMM 204 CKTS, 4.0MM HEIGHT REVERSE ORIENTATION		
	ANGULAR ± 2 °		CCTEH	2007/09/03	MOLEX INCORPORATED			
	DRAFT WHERE APPLICABLE MUST REMAIN WITHIN DIMENSIONS		SHLENI	2007/09/03	MATERIAL NO.	DOCUMENT NO.	SHEET NO.	
A3			SEE TABLE	SD-78195-001		5 OF 5		
			THIS DRAWING CONTAINS INFORMATION THAT IS PROPRIETARY TO MOLEX INCORPORATED AND SHOULD NOT BE USED WITHOUT WRITTEN PERMISSION					

9 8 7 6 5 4 3 2 1