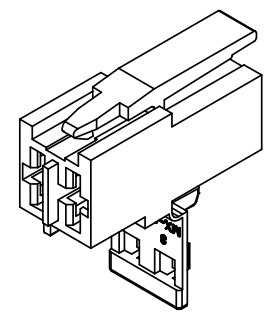
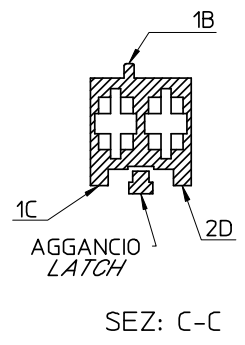


CONFIGURAZIONE POLARIZZAZIONI  
POLARIZATION CONFIGURATION

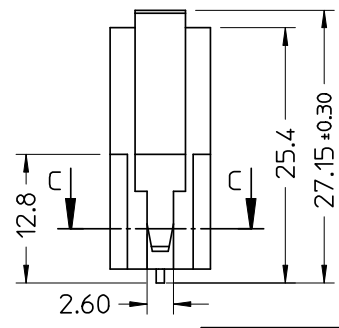
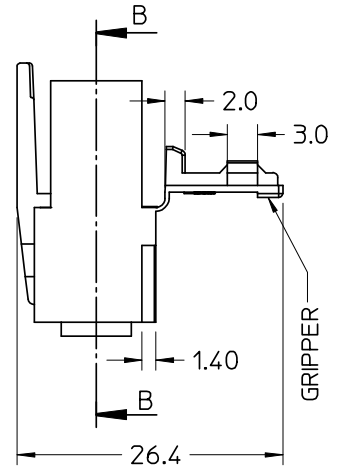
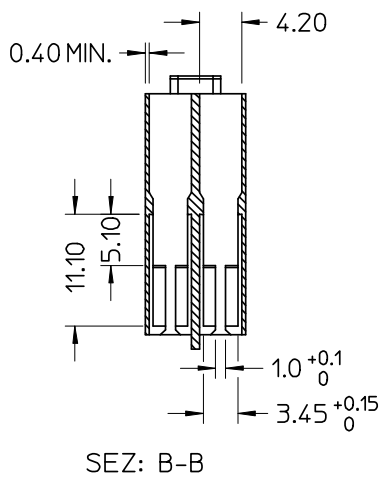
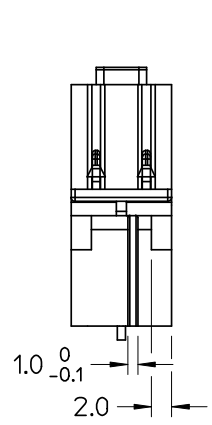


NOTE:  
 - USATO CON TERMINALE 94518-0XXX E 94549-0XXXX  
 - SPECIFICA DI RIFERIMENTO PER IL CONNETTORE PS-94550-001  
 - PER CARATTERISTICHE DI CRIMPATURA RIF. SD-94518-005 E SD-94549-001  
 - FORZA DI DISACCOPIAMENTO CONNETTORE (TRAZIONANDO DAI CAVI SENZA AZIONARE L'AGGANCIAMENTO): 40 N MIN.  
 - SPESSORE MINIMO PARETI CONNETTORE 0.40 mm.

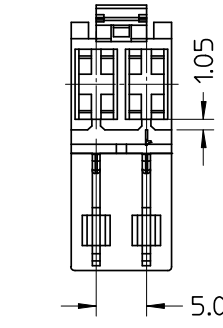
NOTE:  
 - USED WITH RECEPTACLE 94518-0XXX AND 94549-0XXX  
 - REFER TO PS-94550-001 FOR CONNECTOR SPECIFICATION  
 - REFER TO SD-94518-005 AND SD-94549-001 FOR CRIMPING CHARACTERISTICS  
 - CONNECTOR DISENGAGEMENT FORCE (PULLING BY THE WIRES, WITHOUT ACTUATING THE LATCH): 40 N MIN.  
 - MINIMUM CONNECTOR WALL THICKNESS 0.40 mm

CONFEZIONE: Box da 3500 Pz.  
 PACKAGING: 3500 pcs in carton box

MATERIALE: NYLON 6.6 V0 colore naturale  
 MATERIAL: NYLON 6.6 V0 natural



AGENCY  
 RECOGNIZATIONS  
 CSA (file LR19980)  
 UL (file E-29179)



SPQ = 3500

Std. Descr: "HSG W/SEC LOCK AND EXT LATCH 2 CKT \_\_\_\_\_ COLOR"

EC NO: Z2005-0015 DRWN: FGOTTARD 2004/08/24 CHKD: RSANDANO 2004/08/24 APPR: GZUIN 2004/08/25	QUALITY SYMBOLS	GENERAL TOLERANCES (UNLESS SPECIFIED)	SCALE 2:1	DESIGN UNITS METRIC	FIRST ANGLE PROJECTION	REVISE ON CAD ONLY															
	DESCRIPTION ▲ = 0 ▽ = 0	<table border="1"> <tr> <th></th> <th>mm</th> <th>INCH</th> </tr> <tr> <td>4 PLACES</td> <td>± ---</td> <td>± ---</td> </tr> <tr> <td>3 PLACES</td> <td>± ---</td> <td>± ---</td> </tr> <tr> <td>2 PLACES</td> <td>± 0.10</td> <td>± ---</td> </tr> <tr> <td>1 PLACE</td> <td>± 0.2</td> <td>± ---</td> </tr> </table>		mm	INCH	4 PLACES	± ---	± ---	3 PLACES	± ---	± ---	2 PLACES	± 0.10	± ---	1 PLACE	± 0.2	± ---	DIMENSION STYLE MM ONLY	TITLE HSG 2 CKT WITH SEC. LOCK AND EXTERNAL LATCH		
			mm	INCH																	
		4 PLACES	± ---	± ---																	
3 PLACES	± ---	± ---																			
2 PLACES	± 0.10	± ---																			
1 PLACE	± 0.2	± ---																			
DRAFT WHERE APPLICABLE	DRAWN BY FGOTTARD CHECKED BY RSANDANO APPROVED BY GZUIN DATE 2004/08/24	MOLEX INCORPORATED MATERIAL NO. 94550-9502 DOCUMENT NO. SD-94550-016 SHEET NO. 1 OF 1																			
MUST REMAIN WITHIN DIMENSIONS THIS DRAWING CONTAINS INFORMATION THAT IS PROPRIETARY TO MOLEX INCORPORATED AND SHOULD NOT BE USED WITHOUT WRITTEN PERMISSION			A3																		