

Type LPT-08

“Add-On” Automotive Fuse Holder

Tiny Automotive Blade Type Fuse



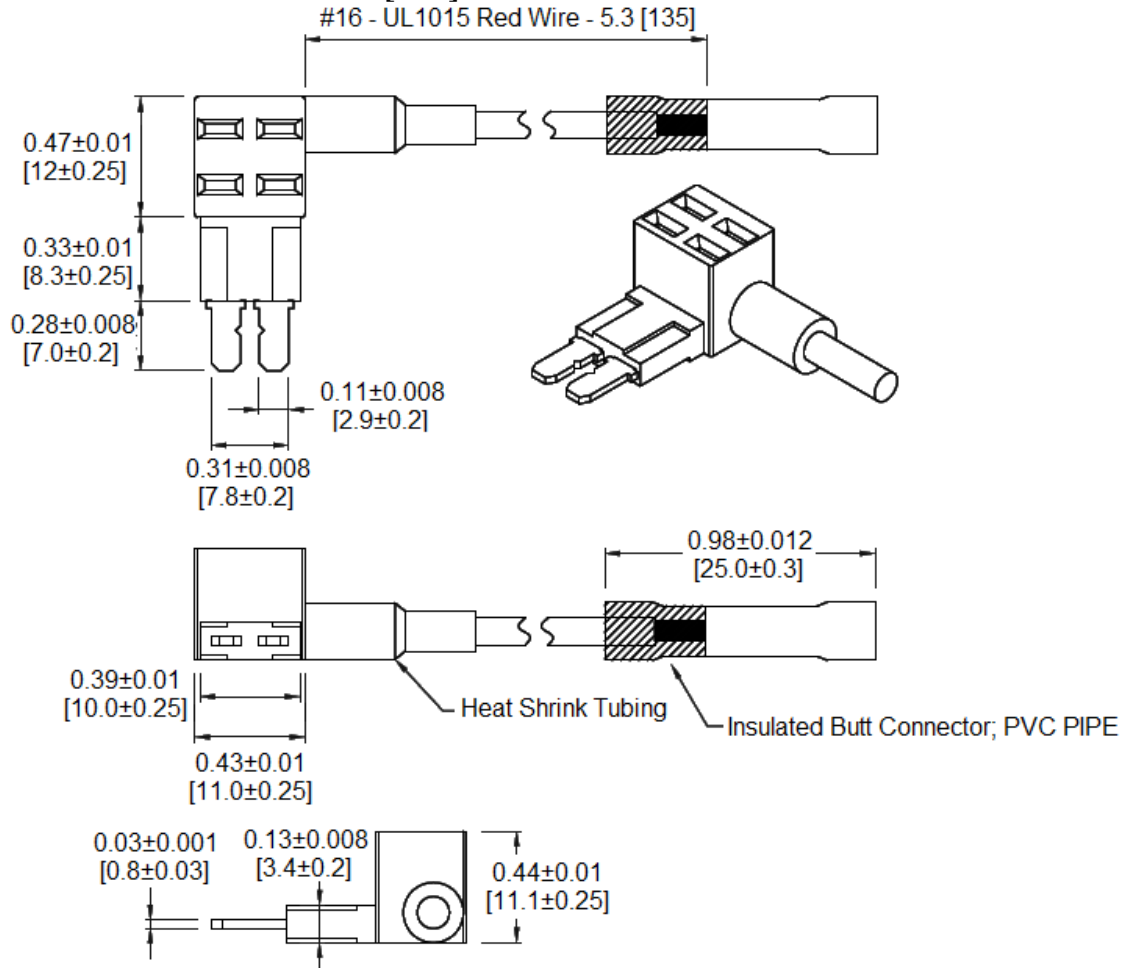
www.optifuse.com

(619) 593-5050

Rating: 58VDC
 Max Combined Current - Both Circuits - 30A
 Max Primary Circuit - 25A
 Max Auxiliary Circuit - 15A

Body Material: Nylon PA66 UL 94V-0
 Terminals: Tin Plated Brass
 For use with Type APT Fuse - Tiny (Micro2) Automotive Blade Type
 Wire: 16 AWG Red Wire
 Connector: Butt-Splice Connector

Mechanical Dimensions: Inches [mm]



Warning:

- Operation beyond the specified maximum ratings or improper use may result in damage and possible electrical arcing and/or flame.
- Device is intended for occasional overcurrent protection. Application for repeated overcurrent condition and/or prolonged trip are not anticipated.
- Avoid contact of device with chemical solvent. Prolonged contact will damage the device performance.

Note: All specifications and dimensions subject to change without notice.

Rev B 11/2015 - Page: 1/1
 Code G02-01H