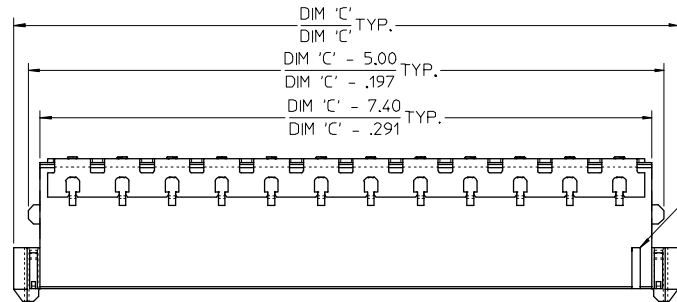
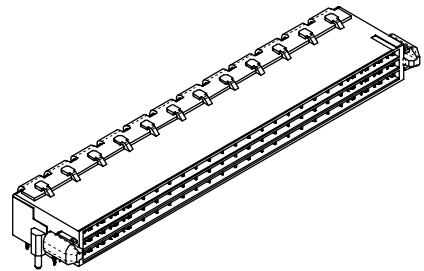
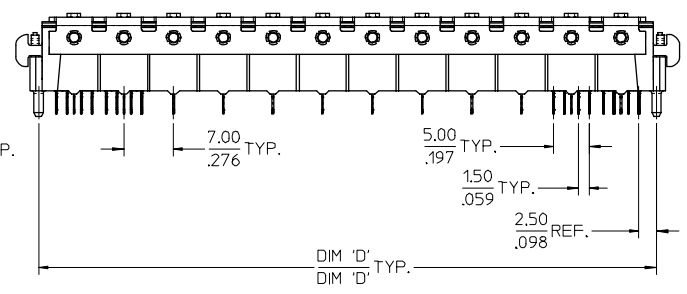
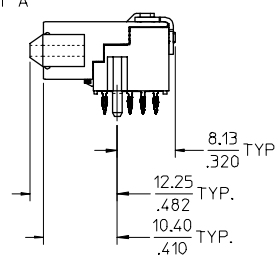
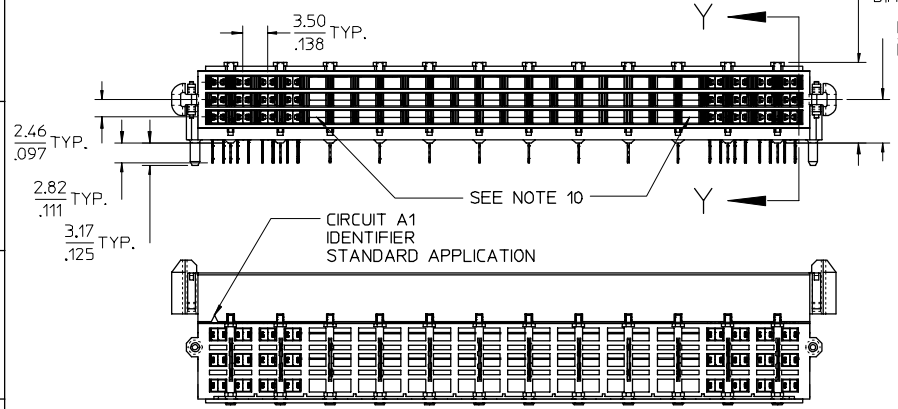


12 11 10 9 8 7 6 5 4 3 2

J
I
H
G
F
E
D
C
B
A



CIRCUIT A1 IDENTIFIER INVERTED APPLICATION



NOTES:

- 1) MATERIALS:
HOUSING - LIQUID CRYSTAL POLYMER, UL94 V-0
WAFER DIELECTRIC - LIQUID CRYSTAL POLYMER, UL94 V-0
CONTACT - TIN-BRASS
- 2) FINISHES
CONTACT
0.76 MICRON MIN. SELECT GOLD AND
0.76 MICRON MIN. SELECT TIN/LEAD OVER
1.27 MICRON MIN. NICKEL OVERALL
HOUSING
0.10 MICRON MAX. IMMERSION GOLD OVER
3.81 MICRON MIN. NICKEL OVER
3.81 MICRON MIN. COPPER OVERALL
- 3) PRODUCT SPECIFICATION
THIS PART CONFORMS TO MOLEX SPECIFICATION PS-75018-001.
- 4) PACKAGING SPECIFICATION
THIS PART TO BE PACKAGED PER SPECIFICATION PK-75020-010.
- 5) APPLICATION SPECIFICATION
THIS PART TO BE APPLIED PER SPECIFICATION AS-75018-001.
- 6) MATING INFORMATION
THIS PART MATES WITH 75018-XXXX.
- 7) ORIENTATION
THIS PART CAN BE USED IN A STANDARD OR INVERTED ORIENTATION (I.E. ROTATED 180°)
- 8) SEE SHEET 3 FOR PCB LAYOUT INFORMATION
- 9) SEE SHEET 4 FOR CIRCUIT DESIGNATION
- 10) CIRCUITS IN THIS ZONE HAVE BEEN OMITTED TO SIMPLIFY THE MODEL. ACTUAL PRODUCT IS FULLY LOADED WITH TERMINALS
- 11) APPLICATION TOOLING KEEP OUT AREA.
NO COMPONENTS TALLER THAN 4.0mm ALLOWED IN THIS AREA.
- 12) USE APPLICATION TOOL NOTED IN CHART WHEN INSERTING INTO PCB.
- 13) CONFORMS TO MOLEX COSMETIC SPECIFICATION ES-75005-001.

EC NO: UCP2003-1292 DRAWN: KLANG 2003/01/14 CHKD: 2003/01/15 APPR: MBANAKIS 2003/01/15	QUALITY SYMBOLS	GENERAL TOLERANCES (UNLESS SPECIFIED)	SCALE 2:1	DESIGN UNITS METRIC	THIRD ANGLE PROJECTION	REVISE ON CAD ONLY															
	▽ 0	<table border="1"> <tr> <th></th> <th>mm</th> <th>INCH</th> </tr> <tr> <td>4 PLACES</td> <td>± ---</td> <td>± ---</td> </tr> <tr> <td>3 PLACES</td> <td>± ---</td> <td>± .005</td> </tr> <tr> <td>2 PLACES</td> <td>± 0.13</td> <td>± .01</td> </tr> <tr> <td>1 PLACE</td> <td>± 0.25</td> <td>± ---</td> </tr> </table>		mm	INCH	4 PLACES	± ---	± ---	3 PLACES	± ---	± .005	2 PLACES	± 0.13	± .01	1 PLACE	± 0.25	± ---	DIMENSION STYLE MM/IN	TITLE	HIGH SPEED DOCKING FLOATING CONNECTOR	
		mm	INCH																		
	4 PLACES	± ---	± ---																		
3 PLACES	± ---	± .005																			
2 PLACES	± 0.13	± .01																			
1 PLACE	± 0.25	± ---																			
∇ 0	ANGULAR ±1/2°	DRAFT WHERE APPLICABLE	DRAWN BY DATE LANG 02-NOV-25 CHECKED BY DATE LANG 02-NOV-26	MOLEX INCORPORATED MATERIAL NO. SEE SHEET 2 DOCUMENT NO. SD-75019-010	SHEET NO. 1 OF 4																
1	REV	MUST REMAIN WITHIN DIMENSIONS	APPROVED BY DATE BANAKIS 02-NOV-26		THIS DRAWING CONTAINS INFORMATION THAT IS PROPRIETARY TO MOLEX INCORPORATED AND SHOULD NOT BE USED WITHOUT WRITTEN PERMISSION																

11 10 9 8 7 6 5 4 3 2 1

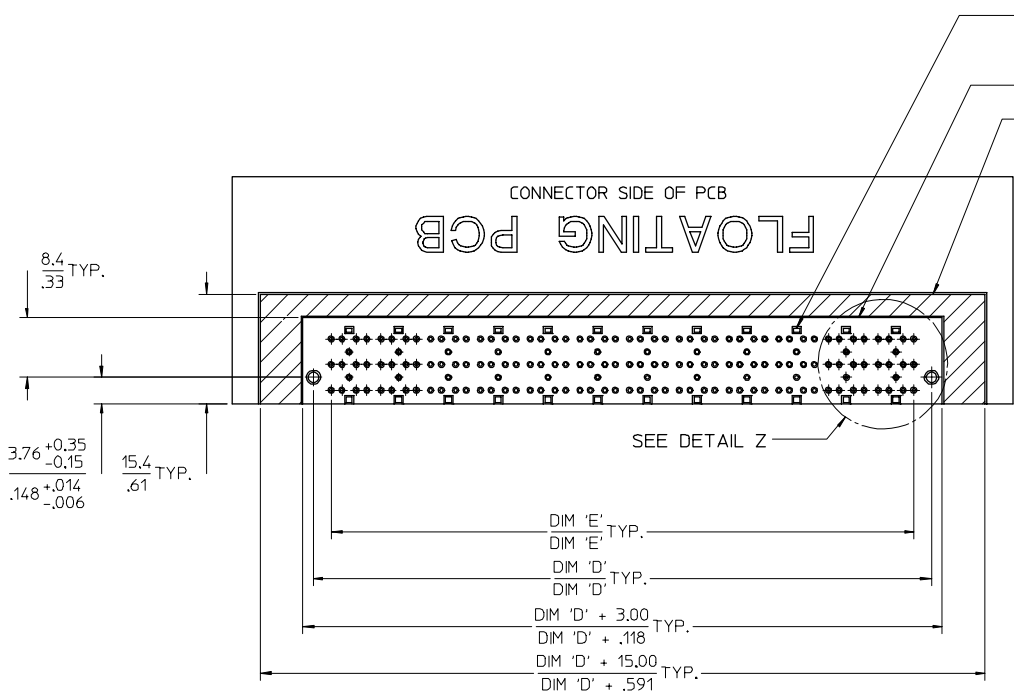
J
I
H
G
F
E
D
C
B
A

ITEM NUMBER	CIRCUIT SIZE	CENTERLINE DIMENSION 'A' mm(in)	O/A HEIGHT DIMENSION 'B' mm(in)	O/A LENGTH DIMENSION 'C' mm(in)	PEG TO PEG DIMENSION 'D' mm(in)	FIRST-LAST DIMENSION 'E' mm(in)	APPLICATION TOOLING ITEM NUMBER
75019-0001	144	4.74 (.187)	9.98 (.393)	93.50 (3.681)	87.00 (3.425)	82.00 (3.228)	62202-0222
75019-0002	144	6.09 (.240)	11.33 (.446)	93.50 (3.681)	87.00 (3.425)	82.00 (3.228)	62202-0222
NOT TOOLED	132	4.74 (.187)	9.98 (.393)	86.50 (3.406)	80.00 (3.150)	75.00 (2.953)	NOT TOOLED
75019-0004	120	4.74 (.187)	9.98 (.393)	79.50 (3.130)	73.00 (2.874)	68.00 (2.677)	NOT TOOLED
75019-0003	108	4.74 (.187)	9.98 (.393)	72.50 (2.854)	66.00 (2.598)	61.00 (2.402)	62202-0221
NOT TOOLED	96	4.74 (.187)	9.98 (.393)	65.50 (2.579)	59.00 (2.323)	54.00 (2.126)	NOT TOOLED
NOT TOOLED	84	4.74 (.187)	9.98 (.393)	58.50 (2.303)	52.00 (2.047)	47.00 (1.850)	NOT TOOLED
NOT TOOLED	72	4.74 (.187)	9.98 (.393)	51.50 (2.028)	45.00 (1.772)	40.00 (1.575)	NOT TOOLED
NOT TOOLED	60	4.74 (.187)	9.98 (.393)	44.50 (1.752)	38.00 (1.496)	33.00 (1.299)	NOT TOOLED
NOT TOOLED	48	4.74 (.187)	9.98 (.393)	37.50 (1.476)	31.00 (1.220)	26.00 (1.024)	NOT TOOLED
NOT TOOLED	36	4.74 (.187)	9.98 (.393)	30.50 (1.201)	24.00 (.945)	19.00 (.748)	NOT TOOLED

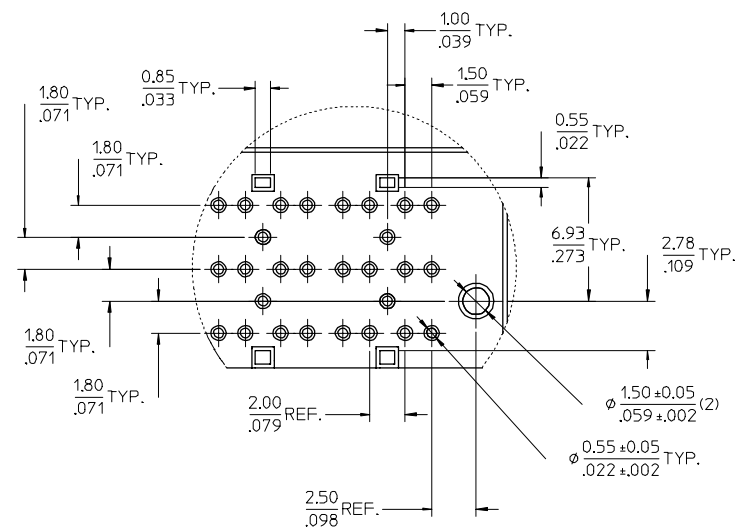
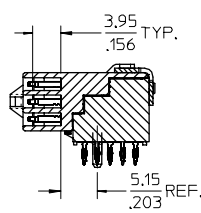
J
I
H
G
F
E
D
C
B
A

EC NO: UCP2003-4292 DRWN: KLANG 2003/01/14 CHKD: 2003/01/15 APPR: MBANAKIS 2003/01/15	QUALITY SYMBOLS ▽ - 0 ◻ - 0	GENERAL TOLERANCES (UNLESS SPECIFIED)		SCALE 1:1	DESIGN UNITS METRIC	THIRD ANGLE PROJECTION	REVISE ON CAD ONLY		
		DIMENSION STYLE MM/IN	TITLE HIGH SPEED DOCKING FLOATING CONNECTOR		DIMENSION STYLE METRIC				
		4 PLACES ± --- ± --- 3 PLACES ± --- ± .005 2 PLACES ± 0.13 ± .01 1 PLACE ± 0.25 ± ---	DRAWN BY DATE LANG 02-NOV-25		CHECKED BY DATE LANG 02-NOV-26				
		ANGULAR ±1/2°		APPROVED BY DATE BANAKIS 02-NOV-26		MATERIAL NO. SEE CHART		DOCUMENT NO. SD-75019-010	
DRAFT WHERE APPLICABLE MUST REMAIN WITHIN DIMENSIONS		SHEET NO. 2 OF 4		THIS DRAWING CONTAINS INFORMATION THAT IS PROPRIETARY TO MOLEX INCORPORATED AND SHOULD NOT BE USED WITHOUT WRITTEN PERMISSION					

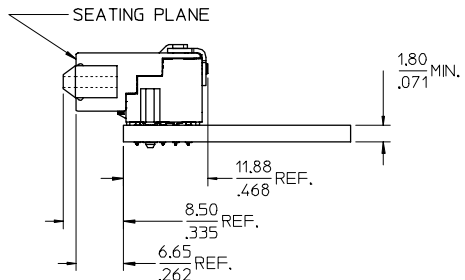
J
I
H
G
F
E
D
C
B
A



NO EXPOSED TRACES ON SURFACE OF PCB IN CONNECTOR STAND OFF LOCATIONS
CONNECTOR KEEP OUT AREA
APPLICATION TOOLING KEEP OUT AREA (NOTES 11 & 12)



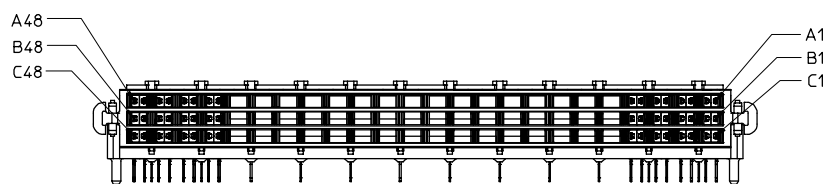
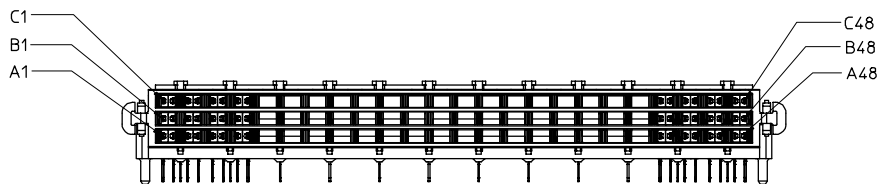
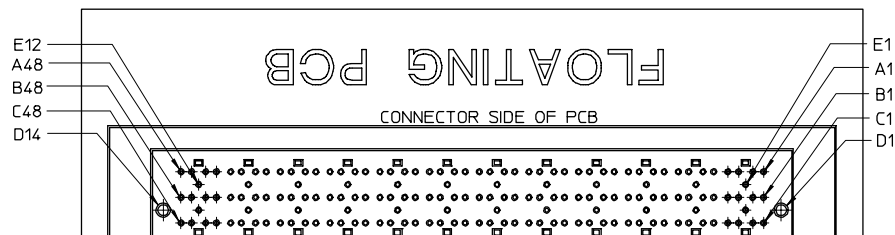
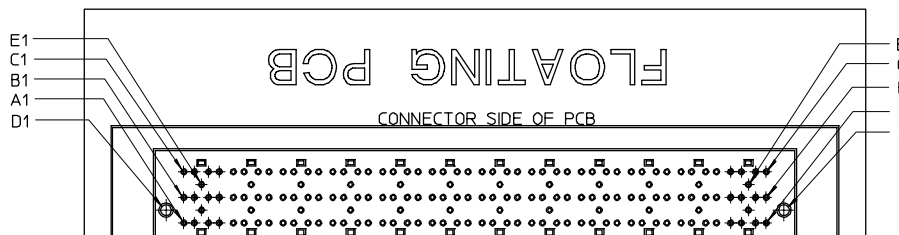
DETAIL Z
SCALE 5:1



EC NO: UCP2003-4292 DRWN: KLANG 2003/01/14 CHKD: 2003/01/15 APPR: MBANAKIS 2003/01/15	QUALITY SYMBOLS ▽-0 ◻-0	GENERAL TOLERANCES (UNLESS SPECIFIED)		SCALE 2:1	DESIGN UNITS METRIC	THIRD ANGLE PROJECTION	REVISE ON CAD ONLY
		m/m	INCH	DIMENSION STYLE MM/IN	TITLE	HIGH SPEED DOCKING FLOATING CONNECTOR	
1	DESCRIPTION	4 PLACES ± --- ± ---	3 PLACES ± --- ± .005	DRAWN BY LANG	DATE 02-NOV-25	MOLEX INCORPORATED	
		2 PLACES ± 0.13 ± .01	1 PLACE ± 0.25 ± ---	CHECKED BY LANG	DATE 02-NOV-26	MATERIAL NO. SEE SHEET 2	DOCUMENT NO. SD-75019-010
DRAFT WHERE APPLICABLE MUST REMAIN WITHIN DIMENSIONS		ANGULAR ±1/2°		APPROVED BY BANAKIS	DATE 02-NOV-26	SHEET NO. 3 OF 4	
THIS DRAWING CONTAINS INFORMATION THAT IS PROPRIETARY TO MOLEX INCORPORATED AND SHOULD NOT BE USED WITHOUT WRITTEN PERMISSION							

STANDARD APPLICATION CIRCUIT DESIGNATIONS

INVERTED APPLICATION CIRCUIT DESIGNATIONS



CIRCUIT DESIGNATION (EXAMPLE FOR 108 CIRCUIT)

FIRST MATE: HOUSING - SIGNAL GROUND
 SECOND MATE: A1, C1, A48, C48
 THIRD MATE: A2, B2, C2, A47, B47, C47 & ALL OTHERS
 LAST MATE: B1, B48

ALL COLUMNS FROM 3 THROUGH 46 ARE SUITABLE FOR DIFFERENTIAL PAIRS
 EG: A3-A4, B3-B4, C3-C4, A21-A22, B33-B34, C45-C46

SIGNAL GROUND: ROWS D & E

EC NO: UCP2003-1292 DRWN: KLANG 2003/01/14 CHKD: 2003/01/15 APPR: MBANAKIS 2003/01/15	QUALITY SYMBOLS ▽ - 0 ◻ - 0	GENERAL TOLERANCES (UNLESS SPECIFIED)		SCALE 2:1	DESIGN UNITS METRIC	THIRD ANGLE PROJECTION	REVISE ON CAD ONLY	
			mm	INCH	DIMENSION STYLE MM/IN		TITLE	
		4 PLACES	± ---	± ---	DRAWN BY LANG	DATE 02-NOV-25	HIGH SPEED DOCKING FLOATING CONNECTOR	
		3 PLACES	± ---	± .005	CHECKED BY LANG	DATE 02-NOV-26		
2 PLACES	± 0.13	± .01	ANGULAR ±1/2°		MOLEX INCORPORATED MATERIAL NO. SEE SHEET 2		DOCUMENT NO. SD-75019-010	
1 PLACE	± 0.25	± ---	DRAFT WHERE APPLICABLE MUST REMAIN WITHIN DIMENSIONS		APPROVED BY BANAKIS	DATE 02-NOV-26	SHEET NO. 4 OF 4	
1	REV	THIS DRAWING CONTAINS INFORMATION THAT IS PROPRIETARY TO MOLEX INCORPORATED AND SHOULD NOT BE USED WITHOUT WRITTEN PERMISSION						C